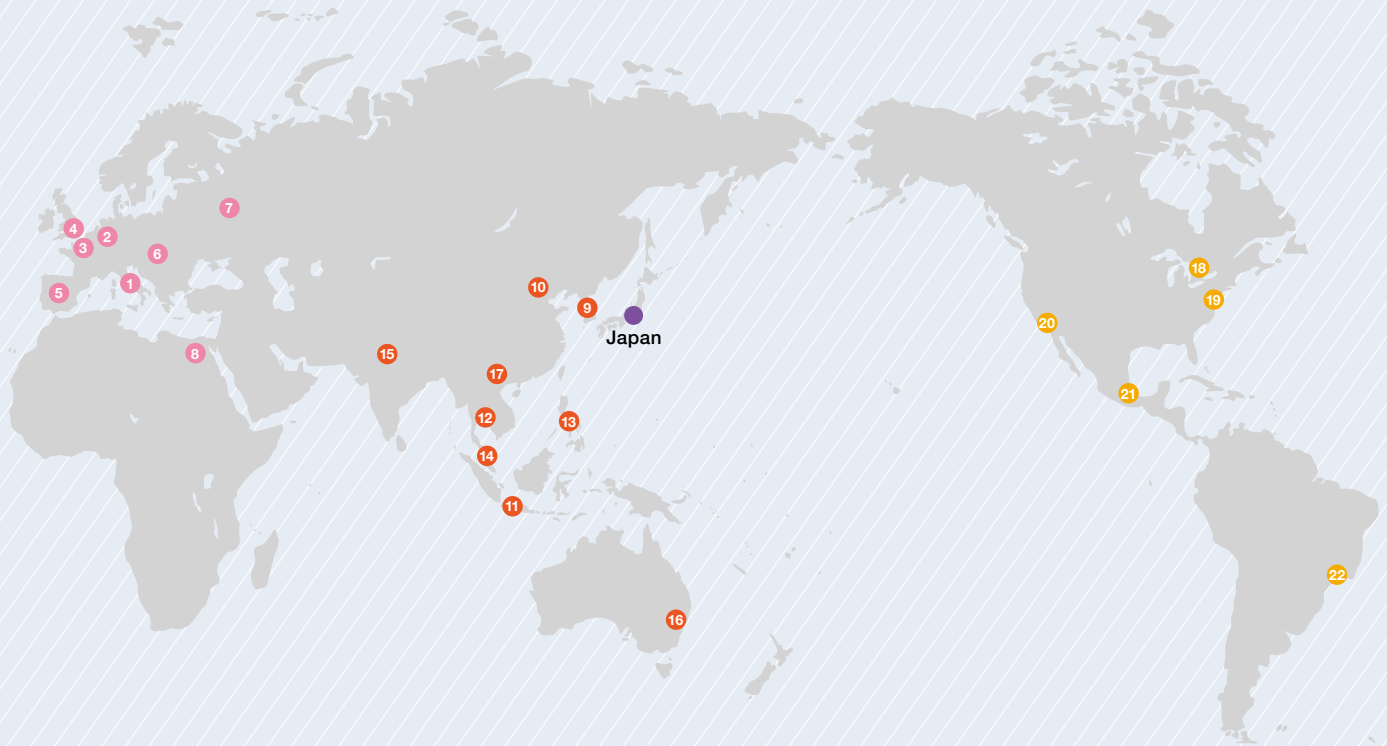


THE
JAPAN
FOUNDATION

The Japan Foundation is Japan's public institution dedicated to sharing Japanese culture with people throughout the world. By presenting diverse aspects of Japanese culture, we create platforms of communication and understanding between the peoples of the world and Japan.



In addition to its Tokyo headquarters, the Japan Foundation has twenty-two offices in twenty-one countries, as well as two Japanese-language institutes in Japan and a Kyoto Office. Using these offices and organizations as footholds, the Foundation is active in all regions of the world. The Japan Foundation also works closely with Japanese embassies and consulates, Japanese-language institutions, and cultural exchange organizations abroad to expand its activities on a global scale.

Europe and Middle East

- 1 Rome
- 2 Cologne
- 3 Paris
- 4 London
- 5 Madrid
- 6 Budapest
- 7 Moscow
- 8 Cairo

Asia and Oceania

- 9 Seoul
- 10 Beijing
- 11 Jakarta
- 12 Bangkok
- 13 Manila
- 14 Kuala Lumpur
- 15 New Delhi
- 16 Sydney
- 17 Hanoi

The Americas

- 18 Toronto
- 19 New York
- 20 Los Angeles
- 21 Mexico City
- 22 Sao Paulo

Japan

- Tokyo
- Saitama
- Osaka
- Kyoto

What We Do to Engage with People Throughout the World

The Japan Foundation develops programs in three different fields—arts and cultural exchange, Japanese-language education overseas, and Japanese studies and intellectual exchange.

Arts and Cultural Exchange

Creating opportunities to engage in the values and virtues embodied in art and life

Arts and culture—such as fine arts, performing arts, literature, films, food and fashion—inspire interest in different values and virtues. They give insights into how people think, act, and communicate, and nurture mutual understanding that transcends language and stereotypes. The Japan Foundation creates opportunities for people all over the world to encounter Japanese art and culture by supporting artists, presenting works, and creating international networks.



Japanese-Language Education Overseas

The more people learn Japanese, the deeper their understanding of Japan becomes

Learning a language bestows a greater understanding and familiarity towards the culture of the target language. The Japan Foundation supports Japanese-language education around the world to ensure that people get the proper environment and quality of education. Programs include organizing the Japanese-Language Proficiency Test, developing teaching materials, supporting Japanese courses, and providing training programs for Japanese-language teachers, as well as conducting worldwide surveys to meet the needs of all Japanese-language practitioners.



Japanese Studies and Intellectual Exchange

Combining Japan with the world's public intellectuals is key to resolving issues that we all share.

To deepen the understanding of Japan and to maintain good relations between Japan and other countries, aid is granted through fellowships for research in Japan and through diverse grant programs for Japanese studies organizations. To promote networking on an international level, surveys are carried out on overseas researchers and organizations of Japanese studies.

Collaborative research and dialogue projects are also carried out to confront the problems of the world or specific regions and to seek measures to solve such problems.



How We Support People in Cultural Exchange

The Japan Foundation identifies the needs of individuals engaged in various cultural fields, and creates opportunities and supports programs and events, fostering sustained environments for cultural exchange.

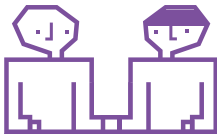


PLAN

The Japan Foundation takes initiatives in planning and organizing programs of cultural presentation, language courses and international conferences.

We also coordinate programs that invite cultural leaders to Japan to foster networking and provide hands-on experiences in Japan.

- Organizing international exhibitions and stage performances of leading Japanese and international artists.
- Demonstrations of Ikebana, tea ceremony, cuisine, craft and other examples of Japanese culture.
- Holding international conferences aimed at resolving global issues.
- Inviting overseas researchers, leading cultural figures, and teachers.



SUPPORT

The Japan Foundation provides funding for people actively engaged in cultural exchange, and provides grants for cultural exchange by making available tools, opportunities, and venues that facilitate exchange activities.

- Providing grants to people involved in exhibitions and stage performances related to Japanese arts and culture.
- Supporting individuals and NPOs for Japanese cultural exchange projects.
- Supporting programs to assist the professional skills of Japanese-language teachers.
- Supporting universities and research institutes engaging in Japanese studies.



NETWORK/ INFORMATION

Gathering the information and materials needed by people active in cultural exchange and helping them to develop personal networks, the Japan Foundation is continually building the foundations of international cultural exchange and expanding its outreach.

- Running online database of Japanese performing arts.
- Regularly issuing booklets in English highlighting Japanese books and films.
- Administering the Japanese-Language Proficiency Test (JLPT).
- Developing online materials for teaching Japanese.
- Developing and deploying the JF Standard for Japanese-Language Education, a reference tool to help think about teaching, learning, and assessment in Japanese-language education.
- Building international networks among scholars and intellectuals researching Japan.

What We Have Done

Looking Back on the Achievements of the Last Forty Years

Since its establishment in 1972, the Japan Foundation has introduced leading and established art and culture of the times, continuously developed programs to enrich Japanese-language education all over the world, and created numerous opportunities to exchange wisdom between Japan and other countries.

Note: The years described below indicate Japanese fiscal years (April to March).

70's

- 1973 Japan Foundation Awards established.
- 1973 Inaugural edition of quarterly *Kokusai Koryu*.
- 1974 Inaugural edition of *An Introductory Bibliography for Japanese Studies*.
- 1975 Conducts first survey report on Japanese-language education. Finds approximately 78,000 Japanese-language learners.
- 1975 Sends Umewaka Manzaburo Noh Theater Troupe to perform the first Noh play in the Middle East.
- 1977 Invites French cultural anthropologist and ethnologist Claude Lévi-Strauss to Japan.
- 1977 Soccer teams sent on tour throughout Southeast Asia, mobilizing 200,000.
- 1978 Starts special fellowships for Japanese studies scholars.
- 1978 Kabuki performance held as first governmental-level exchange with China.
- 1979 Peruvian writer Mario Vargas Llosa invited to Japan.
- 1979 Tezuka Osamu and other artists conduct lectures on manga in the United States.



André Malraux of France visits Japan as part of program inviting leading cultural figures to Japan (1974)



Balinging performance by Kalinga tribe at the first Asian Traditional Performing Arts (ATPA) exchange (1976)

80's

- 1980 Ohno Kazuo Butoh dance company takes part in World Theatre Festival in Nancy, France.
- 1980 Begins Japanese film world tour series starting with Ozu Yasujiro.
- 1981 "The Great Japan Exhibition: Art of the Edo Period 1600-1868" held in the United Kingdom. Visited by 520,000.
- 1982 Japanese-language TV course *Yan-san and the Japanese People* begins airing overseas.
- 1984 First Japanese-Language Proficiency Test held overseas. Taken by 4,473 in 19 cities in 14 countries.
- 1986 English version of *The Basic Japanese-English Dictionary* published.
- 1986 "Japon des Avant Gardes 1910-1970" exhibition held in France. Visited by 150,000.
- 1989 Starts long-term training program in Japan for foreign teachers of the Japanese-language. 38 teachers from 19 countries participate.



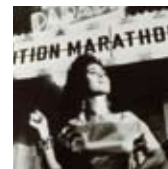
Preparing venue for "The Great Japan Exhibition: Art of the Edo Period" in London (1981)



Japanese teachers from abroad during training session in Japan (1981)

90's

- 1990 Starts ASEAN Youth Fellowship Program.
- 1991 Starts Abe Fellowship Program.
- 1992 First issue of *Japanese Book News*.
- 1994 Presents *Shunkan* through Noh, Kabuki, and Bunraku performances in European tour.
- 1995 Exhibition "Asian Modernism: Diverse Development in Indonesia, the Philippines and Thailand"
- 1996 Commissioner Isozaki Arata's Japanese pavilion wins Golden Lion for best national participation at Venice Biennale's 6th International Architecture Exhibition.
- 1996 Starts Asia Leadership Fellowship Program.
- 1997 Starts special program to translate and publish Japanese literary works.
- 1997 Performance of *Lear*, a joint theater production by six Asian countries.
- 1997 Starts Japanese-language program in Japan for foreign officers, public officials, and librarians.
- 1998 Publishes Shiba Ryotaro's *The Last Shogun: The Lite of Tokugawa Yoshinobu*.



A scene from Part 2 of *Southern Winds*, one of the productions shown at the Southeast Asian Film Festival.(1992)



Lear, an experiment in multi-lingual theater (1997)

00's

- 2001 Organizes first Yokohama Triennale 2001.
- 2002 Starts "Future Leaders Forum: China/Japan/ Korea."
- 2005 Holds international symposium "A Wild Haruki Chase: How the World Is Reading and Translating Murakami."
- 2005 Invites Afghanistan potters to Japan to study Japanese methods of pottery making.
- 2006 Starts Long-term Exchange Program for Chinese High School Students.
- 2006 Holds theatrical performance workshop with teenagers in Aceh, Indonesia.
- 2006 Starts Japan-US Dialogue for Cooperation in Reconstruction after Hurricane Katrina.
- 2007 Starts The Japan Foundation Poranavi Award for Literary Work/Translation.
- 2009 Launches *Japanese in Anime & Manga* (online).
- 2009 "JF Standard for Japanese-Language Education 2010" released.
- 2010 Number of people studying Japanese exceeds 3.6 million.



Kusama Yayoi's *Narcissus Sea*, 2001 (Yokohama Triennale 2001) © Mikio Kurokawa



Erin's Challenge! I can speak Japanese Japanese-language TV program (2006)

How We Keep Step with You

Something useful can always be found among our programs. Learning more about the Japan Foundation may be all that is necessary for you to expand your range of activities and stay connected to Japan and the world.

If you are interested in arts and cultural activities:

We support international activities of artists and NPOs related to arts and culture.

→ The Japan Foundation website → Program Guidelines

Find artist-in-residence programs that fit you.

→ AIR_J <http://en.air-j.info/>

Find the latest information on the performing arts, books and films in Japan.

→ *Performing Arts Network Japan* <http://performingarts.jp/>

→ *Japanese Book News* → The Japan Foundation website
→ Useful data

If you're interested in Japanese-language education abroad:

Find elements that can be freely incorporated into Japanese-language teaching materials.

→ *Minna no Kyozaï* website
<http://minnanokyozaï.jp/kyozai/home/en/render.do>

We publish books and resources on the state of Japanese-language education and teaching methods.

→ The Japan Foundation website → Publications and Goods

→ *The JF Standard for Japanese-language Education* (in Japanese) <http://jfstandard.jp/top/ja/render.do>

If you are a learner of Japanese language:

Find information about the Japanese-Language Proficiency Test (JLPT) here.

→ Japanese-Language Proficiency Test (JLPT) <http://www.jlpt.jp/e/>

You can learn Japanese and take simple tests on the Internet.

→ Online version of *Erin's Challenge! I can speak Japanese* <https://www.erin.ne.jp/en/>

→ *Japanese in Anime & Manga* <http://www.anime-manga.jp/>

→ *Nihongo de Care-navi* (language-learning tool for nursing and care work) <http://eng.nihongodecarenavi.jp/>

→ *Sushi Test* (an online Japanese-language test) <http://momo.jpf.go.jp/sushi/>

If you are a researcher:

The Foundation provides grants for international conferences and other opportunities for networking between researchers in different countries and fields of study, and fellowships to Japanese studies researchers.

→ The Japan Foundation website → Program Guidelines

We have a wide range of publications on Japan available in various languages.

→ Contact the closest Japan Foundation library near you or the JFIC library at the Tokyo headquarters.

For more on the Japan Foundation:

Find stories of international cultural exchange on our online periodical *Wochi Kochi*.

→ *Wochi Kochi Magazine* <http://www.wochikochi.jp/>

Subscribe to our E-mail magazine on Foundation news and recommended events

→ The Japan Foundation website → E-mail magazine

Follow us on our blog and Twitter.

→ The Japan Foundation website → Official Blog *Chikyu wo Akeyo* (Opening Up the World) <http://d.hatena.ne.jp/japanfoundation>
→ Twitter: @japanfoundation

Visit the Japan Foundation website :
<http://www.jpf.go.jp/>

Europe and Middle East

- | | | |
|---|--|---|
| 1 | L'Istituto Giapponese di Cultura
(The Japan Cultural Institute in Rome) | http://www.jfroma.it/ |
| 2 | Japanisches Kulturinstitut
(The Japan Cultural Institute in Cologne) | http://www.jki.de/ |
| 3 | Maison de la culture du Japon à Paris
(The Japan Cultural Institute in Paris) | http://www.mcjp.fr/ |
| 4 | The Japan Foundation, London | http://www.jpf.org.uk/ |
| 5 | The Japan Foundation, Madrid | http://www.fundacionjapon.es/ |
| 6 | The Japan Foundation, Budapest | http://www.japanalapitvany.hu/ |
| 7 | The Japanese Culture Department "Japan Foundation"
of the All-Russia State Library for Foreign Literature | http://www.jpfmw.ru/ |
| 8 | The Japan Foundation, Cairo | http://jfcairo.org/ |

Asia and Oceania

- | | | |
|----|---|---|
| 9 | The Japan Foundation, Seoul | http://www.jpf.or.kr/ |
| 10 | The Japan Foundation, Beijing | http://www.jpfbj.cn/ |
| 11 | The Japan Foundation, Jakarta | http://www.jpf.or.id/ |
| 12 | The Japan Foundation, Bangkok | http://www.jfbkk.or.th/ |
| 13 | The Japan Foundation, Manila | http://www.jfmo.org.ph/ |
| 14 | The Japan Foundation, Kuala Lumpur | http://www.jfkl.org.my/ |
| 15 | The Japan Foundation, New Delhi | http://www.jfindia.org.in/ |
| 16 | The Japan Foundation, Sydney | http://www.jpf.org.au/ |
| 17 | The Japan Foundation Center for
Cultural Exchange in Vietnam | http://jpf.org.vn/ |

The Americas

- | | | |
|----|--|--|
| 18 | The Japan Foundation, Toronto | http://www.jftor.org/ |
| 19 | The Japan Foundation, New York
The Japan Foundation Center for
Global Partnership, N.Y | http://www.jfny.org/
http://www.cgpg.org/ |
| 20 | The Japan Foundation, Los Angeles | http://www.jflalc.org/ |
| 21 | The Japan Foundation, Mexico | http://www.fjmex.org/ |
| 22 | The Japan Foundation, Sao Paulo | http://fjsp.org.br/ |

Japan

- | | | |
|---|-------------------------------------|---|
| ● | Headquarters (Tokyo) | http://www.jpf.go.jp/ |
| ● | Japanese-Language Institute, Urawa | http://www.jpf.go.jp/j/urawa/ |
| ● | Japanese-Language Institute, Kansai | http://www.jfkf.jp/ |
| ● | Kyoto Office | http://www.jpf.go.jp/e/about/outline/kyoto.html |

The Japan Foundation Headquarters

Information Center

4-4-1 Yotsuya, Shinjuku-ku

Tokyo 160-0004, Japan

<http://www.jpf.go.jp/>