



Fiscal 2010-2011
**The Japan
Foundation**

**Program
Guidelines**



JAPANFOUNDATION

Contents

A. Introduction to the Japan Foundation	1
B. Instructions for Using the Program Guidelines	1
C. Application Procedures and Conditions	3
D. Outline of Programs Open to Applications from the Public	5
E. FAQs	6
F. List of Programs	7
G. Program Details	
I Arts and Cultural Exchange	9
II Japanese-Language Education Overseas	22
III Japanese Studies Overseas and Intellectual Exchange	35
IV Others	42
Appendix: The Japan Foundation Offices	43

A. Introduction to the Japan Foundation

History

The Japan Foundation was established in 1972 as a special legal entity to undertake international cultural exchange and was subsequently reorganized as an independent administrative institution in October 2003. The Japan Foundation consists of a head office in Tokyo, a branch office in Kyoto, two Japanese-language institutes (Urawa and Kansai), and 21 overseas offices in 20 countries (as of August 2009).

Purpose

The purpose of the Japan Foundation is: "To contribute to a better international environment, and to the maintenance and development of harmonious foreign relationships with Japan, through deepening other nations' understanding of Japan, promoting better mutual understanding among nations, encouraging friendship and goodwill among the peoples of the world, and contributing to the world in culture and other fields through the efficient and comprehensive implementation of international cultural exchange activities." (Independent Administrative Institution Japan Foundation Law, Article 3)

Programs and Activities of the Japan Foundation

The Japan Foundation carries out its programs and activities in the following three major categories:

- I Arts and Cultural Exchange
- II Japanese-Language Education Overseas
- III Japanese Studies and Intellectual Exchange

Each program within these categories supports international exchange activities by individuals and organizations. The Japan Foundation also plans and stages events, and provides continuous support for universities and other organizations overseas. Provision of information obtained through research is another activity of the Japan Foundation.

The Japan Foundation Information Center (JFIC) provides information on international cultural exchange through media such as its website (<http://www.jpf.go.jp/e/index.html>) and the periodical *Wochi Kochi*, and through the JFIC Library.

B. Instructions for Using the Program Guidelines

1. Introduction of Applicable Programs

The Japan Foundation invites individuals and organizations that are planning international exchange projects to participate in our programs. Successful applicants are provided with grants, research scholarships, Japanese-language teaching materials, or other types of support. A variety of programs are organized by category and objective, each with its own stipulated conditions. Anyone or any organization satisfying eligibility requirements and meeting program objectives is welcome to apply to programs. The Japan Foundation screens the applications and provides support to successful applicants.

2. Finding the Right Program

- (1) The Japan Foundation Program Guidelines for Fiscal 2010-2011 (i.e., the fiscal year from April 1, 2010, to March 31, 2011) outlines the full list of the Japan Foundation's applicable programs. These guidelines are prepared to assist individuals and organizations that are planning to undertake international exchange projects in fiscal 2010 to identify the relevant programs.
- (2) If you find in the Program Guidelines a program to which you wish to apply, after reading the attached instructions, please obtain the application forms, fill out the forms, and submit the application by the deadline to the office specified.

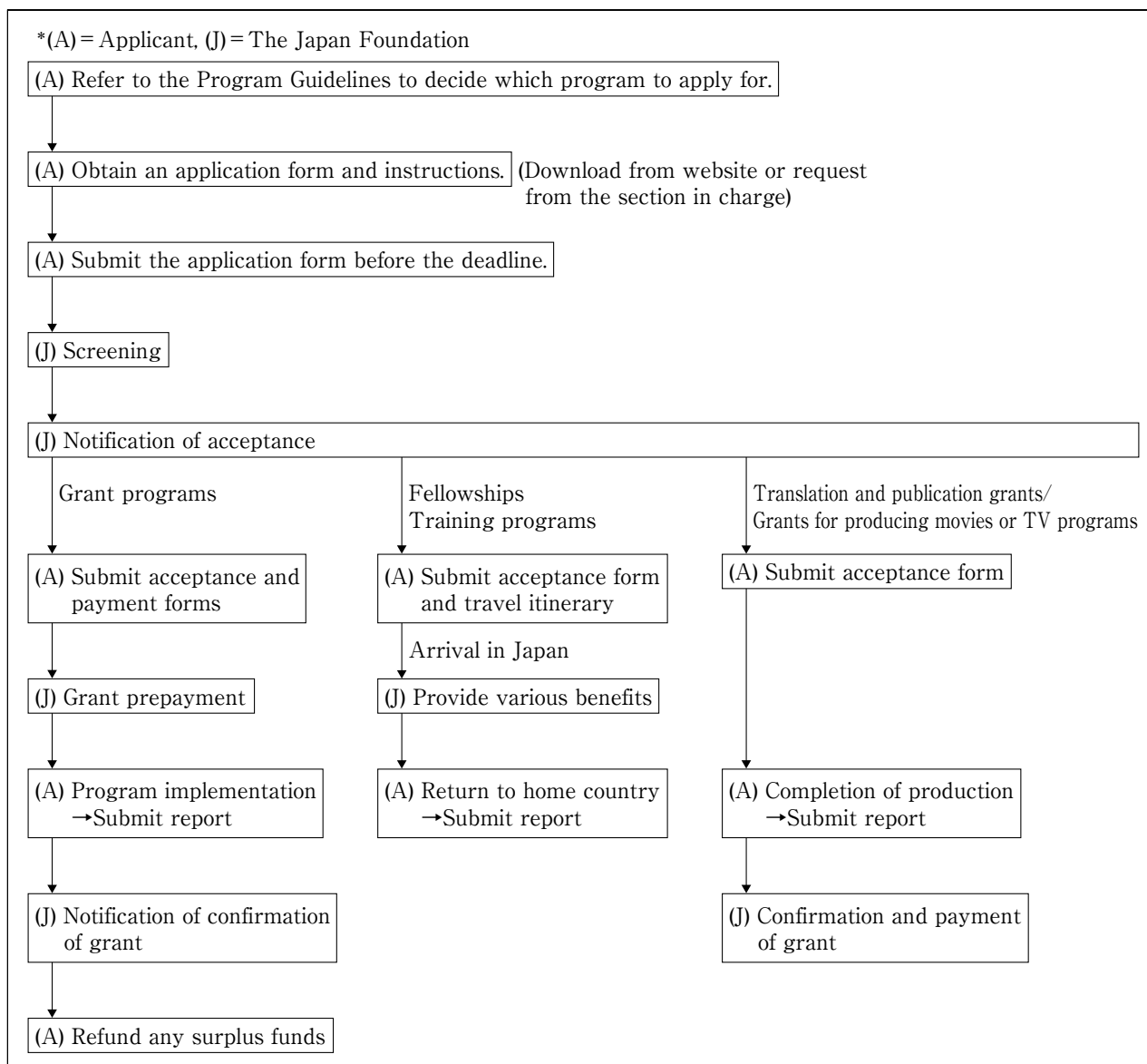
3. How to Obtain Application Forms:

You can obtain application forms by:

- (1) Download the appropriate form from the Japan Foundation website (<http://www.jpf.go.jp/e/program/index.html>); or
- (2) Contact the local Japan Foundation office in your country of residence, or the nearest Embassy or Consulate-General of Japan, as outlined in section 4 (below): "Where to Submit Application Forms", to request hardcopy format application forms to be sent to you.



Reference: Process from the application, notification of acceptance, and project completion, by program type



4. Where to Submit Application Forms

- (1) If you are located in Japan, submit your application to the section in charge at the Japan Foundation headquarters in Tokyo. (Address p. 43)
- (2) If you are located outside Japan, submit your application to the local Japan Foundation office. (See p. 44 for a list of Japan Foundation offices overseas). If there is no Japan Foundation office in your country of residence, please contact the nearest Embassy or Consulate-General of Japan.

5. Notes

- (1) Please check application eligibility criteria of the programs of interest (for example, whether the program solicits applications in Japan or outside Japan, or whether the program accepts applications from organizations or individuals). Particularly, if you intend to submit an application from outside of Japan, please be sure to locate the office where your application should be submitted (p.p. 44-46), and make contact by telephone or e-mail before submitting your application, to ensure you have identified the appropriate office to send your application and that you are eligible to apply for the program you are considering.
- (2) The deadline for applications and the frequency of solicitation vary among programs. Please read the details of each program outlined in the Program Guidelines.
- (3) Post the application form to ensure delivery by the closing date. If you wish to receive confirmation of receipt, please include a stamped, self-addressed postcard (blank reverse side) for the confirmation notice to be sent back to you.
- (4) The Japan Foundation does not accept applications submitted through the Internet, by e-mail, or by fax.

6. Inquiries

- (1) For prospective applicants from within Japan, please contact the section in charge at the Japan Foundation headquarters. (List of offices in Japan on p. 43)
- (2) For prospective applicants from outside Japan, please contact your nearest Japan Foundation office. (List of regional offices overseas on p. 44) (If there is no regional office in your country of residence, please contact the nearest Embassy or Consulate-General of Japan.)

C. Application Procedures and Conditions

This section mainly explains the common procedures and conditions which apply for all the programs. Please also read the outline of each program in the following chapters. Please note, some programs require further procedures and stipulate additional conditions.

1. Conditions Common to All Programs

(1) Affiliation of Applicant (Individual or Organization)

Some programs are designed for individual applicants, while other programs are for organizations. For organizations, a voluntary organization without legal status can also apply for a program, but is requested to attach to the application form documentation certifying the establishment of their organization (e.g., Articles of Incorporation).

(2) Eligibility of the Applicant

- a) Applicants must have the capabilities necessary for implementing the planned projects.
- b) When the applicants are organizations, applicants must not be commercial organization.
- c) The receipt of grants or support from the Japan Foundation must not violate any laws, regulations, or ordinances.
- d) When the applicants are organizations, applicants must have a bank account in the organization's name in order to receive grant money from the Japan Foundation.

(3) In principle, the Japan Foundation does not provide grants for:

- a) the Japanese government (including national institutions), Japanese local municipalities (including municipal schools and universities and other municipal institutions), Japanese independent administrative institutions, Japanese local independent administrative institutions, Japanese national university corporations (including national secondary schools), and lower branches of the above-mentioned organizations;
- b) Foreign governments, including their administrative organs and their embassies and consulates-general in Japan (exceptions being academic, cultural, or research institutes, such as universities and museums); and
- c) International organizations to which the Japanese government makes a financial contribution.

(4) Policy limiting support to individuals or organizations for a maximum of three consecutive years

For individuals or organizations that have continually received support from the same program for the past three fiscal years, unless the Japan Foundation believes there is a compelling reason to continue receiving such support, the policy is not to provide grants for the fourth fiscal year. This is a measure to avoid giving ongoing support to the same applicants, and to distribute grants to as many applicants as possible. Applicants can apply for the same program for a fourth consecutive fiscal year, but please be aware that the Japan Foundation places a lower priority on such applications.

(5) Project Categories the Japan Foundation will not support

The Japan Foundation will not support:

- a) projects for religious or political purposes.
- b) projects for profit-making purposes.

2. Eligible Regions and Countries

Some programs are intended to cover projects in specific regions or countries only. Please check the outline of each program to ensure the country in which you will conduct your activities is eligible for the program which you are considering to apply for. (The list and definition of areas and countries are shown on p. 5).

3. Selection Policy

Selection policy of each program is explained in the respective program descriptions in the Program Guidelines. In addition, it is the Japan Foundation's overall policy to promote good relations between Japan and other countries. As such, the Japan Foundation considers policy aspects in reviewing applications, such as: regional distribution of projects, expected contribution to bilateral diplomatic relations or to important commemorative events etc.

4. Prioritization Policy toward Projects Related to Major Commemorative Events

- (1) Applications related to the major commemorative cultural events listed under A) below will be given higher priority when

I

II

III

IV

screening programs listed under B).

A) List of major commemorative events:

- Japan Year 2010 in Turkey
(Target country: Turkey)
- Super Festival: Japan-Mexico 400 (2010)
(Target country: Mexico)

B) List of target programs

- Grant Program for Cultural Presentation Abroad
- Grant Program for Cultural Exchange at the Grass-roots Level
- Exhibitions Abroad Support Program
- Support Program for Art Event Abroad at the Grass-roots Level
- Grant Program for Overseas Performances

(2) Applicants to some programs may be asked to indicate the relevance of their projects to large-scale cultural events, including (1)-A) above, or major art festivals overseas. Please specify the relevance, if any, in the application form, as it may be a subject for consideration in screening the application.

5. Examples of Projects Accepted

The Japan Foundation's website (<http://www.jpf.go.jp/e/>) lists examples of projects which have been accepted in recent years.

6. Deadlines

The deadline for application and the frequency of solicitation vary among programs. Please be sure to read the outline of each program in the Program Guidelines.

7. Applicants from the U.S.A.

(1) Center for Global Partnership Programs (CGP) (see p. 38)

Methods and deadlines for Center for Global Partnership programs (CGP) are different from those of other Japan Foundation programs. Please also refer to the CGP's Grant Application Guidelines for U.S. Applicants for further information.

(2) Japanese Studies Fellowship Program

In the U.S., individuals who fall into either of the following three categories can apply for the Japanese Studies Fellowship Program. Applicants should submit completed application forms to the Japan Foundation, New York, by no later than November 2, 2009:

- a) U.S. citizens who reside within the U.S.
- b) U.S. citizens who reside outside of the U.S. and who do not have permanent-resident status in their country of domicile; and
- c) citizens of any country who reside in the U.S. with permanent-resident status. Application forms for U.S. applicants to this program are also distributed by the Japan Foundation, New York, through its website: <http://www.jfny.org/applications.html>.

8. Other Matters

(1) Disclosure of Information

- a) Details of projects supported by the Japan Foundation (e.g., name of the applicant and project description) will be made public in the *Kokusai Koryu Kikin Jigyo Jisseki (Detailed Annual Report of the Japan Foundation Activities)*, on the Japan Foundation's website, and in other public-relations materials.
- b) When a request for information based on the "Law Concerning the Disclosure of Information Held by Independent Administrative Institutions, Etc." (Law No. 140 of 2001), is received, materials such as submitted application forms will be disclosed (unless stipulated by law as not to be disclosed).

(2) Protection of Personal Information

- a) In accordance with the Law Concerning Access to Personal Information Held by Independent Administrative Institutions (Law No. 59 of 2003), the Japan Foundation handles personal information appropriately. For further details of the Japan Foundation's personal information protection policy, please refer to the following website (Japanese only): <http://www.jpf.go.jp/e/privacy>
- b) There may be cases in which the Japan Foundation uses personal information to inform grantees of other Japan Foundation activities or to send them public-relations materials, as well as for screening, implementation, and evaluation procedures of projects. Personal information such as a grantee's name, project title, and affiliation is also carried in the *Detailed Annual Report of the Japan Foundation Activities*, the *Annual Report*, on the Japan Foundation's website, and in other public-relations materials. Personal information is also used in compiling statistics carried in the *Annual Report*. For details regarding the use of personal information in each program, please refer to each program's Application Instructions.

(3) Legal Regulations applicable to Grants from the Japan Foundation

The Japan Foundation Grant Programs are operated in accordance with relevant Japanese laws including the "Law for the Proper Execution of a Budget Relating to Subsidies" (Law. No. 179 of 1955) as specified in Article 13 of the "Independent Administrative Institution Japan Foundation Law" (Law. No. 137 of 2002).

9. List and Definition of Areas and Countries from which Applications Are Accepted

(as of August 2009)

Countries and Regions

East Asia	China, Japan, Korea, Mongolia
Southeast Asia	Brunei, Cambodia, East Timor, Indonesia, Laos, Malaysia, Myanmar, Philippines, Singapore, Thailand, Viet Nam
South Asia	Bangladesh, Bhutan, India, Maldives, Nepal, Pakistan, Sri Lanka
Oceania	Australia, Fiji, Kiribati, Marshall Islands, Micronesia, Nauru, New Zealand, Palau, Papua New Guinea, Samoa, Solomon, Tonga, Tuvalu, Vanuatu
North America	Canada, U.S.A
Central America	Antigua and Barbuda, Bahamas, Barbados, Belize, Costa Rica, Cuba, Dominican Republic, Commonwealth of Dominica, El Salvador, Grenada, Guatemala, Haiti, Honduras, Jamaica, Mexico, Nicaragua, Panama, St. Christopher and Nevis, St. Lucia, St. Vincent and the Grenadines, Trinidad and Tobago
South America	Argentina, Bolivia, Brazil, Chile, Colombia, Ecuador, Guyana, Paraguay, Peru, Suriname, Uruguay, Venezuela
Western Europe	Andorra, Austria, Belgium, Cyprus, Denmark, Finland, France, Germany, Greece, Iceland, Ireland, Italy, Liechtenstein, Luxembourg, Malta, Monaco, Netherlands, Norway, Portugal, San Marino, Spain, Sweden, Switzerland, U.K., Vatican
Eastern Europe	Albania, Armenia, Azerbaijan, Belarus, Bosnia and Herzegovina, Bulgaria, Croatia, Czech Republic, Estonia, Georgia, Hungary, Kazakhstan, Kyrgyz, Kosovo, Latvia, Lithuania, Macedonia, Moldova, Montenegro, Poland, Romania, Russia, Serbia, Slovakia, Slovenia, Tajikistan, Turkmenistan, Ukraine, Uzbekistan
Middle East	Afghanistan, Bahrain, Iran, Iraq, Israel, Jordan, Kuwait, Lebanon, Oman, Palestinian Interim Self-Government Authority, Qatar, Saudi Arabia, Syria, Turkey, U.A.E., Yemen
North Africa	Algeria, Egypt, Libya, Morocco, Sudan, Tunisia
Africa	Angola, Benin, Botswana, Burkina Faso, Burundi, Cameroon, Cape Verde, Central Africa, Chad, Comoros, Democratic Republic of Congo, Republic of Congo, Cote d'Ivoire, Djibouti, Equatorial Guinea, Eritrea, Ethiopia, Gabon, Gambia, Ghana, Guinea, Guinea-Bissau, Kenya, Lesotho, Liberia, Madagascar, Malawi, Mali, Mauritania, Mauritius, Mozambique, Namibia, Niger, Nigeria, Rwanda, Sao Tome and Principe, Senegal, Seychelles, Sierra Leone, Somalia, South Africa, Swaziland, Tanzania, Togo, Uganda, Zambia, Zimbabwe

Note: Citizens or organizations of countries that do not have diplomatic relations with Japan are not eligible to apply.

D. Outline of Programs Open to Applications from the Public

I Arts and Cultural Exchange

The Japan Foundation supports exchange projects between Japan and other nations in three art fields (figurative arts, performing arts and audio-visual arts) and publication as well as in the fields of enhancement of understanding of Japan through culture, cultural cooperation and civic/youth exchange, in order to:

1. Deepen the understanding of Japan abroad through the introduction of Japanese culture and arts; or
2. Contribute to the preservation and restoration of indigenous cultural traditions, or to the peace-building or restoration in post-conflict or post-disaster areas through cultural activities.

II Japanese-Language Education Overseas

To enhance mutual communication between Japan and other nations, to foster cross-cultural understanding, and to lay the foundation for deepening other nations' understanding of Japan, the Japan Foundation supports Japanese-language education overseas through programs open to public applications such as: training programs for teachers and other specialists, and grant programs for foreign organizations.

III Japanese Studies and Intellectual Exchange

1. Support of Japanese Studies Overseas

In order to deepen understanding of Japan in other countries and to maintain good relations between Japan and other countries, support through fellowships (for scholars to conduct research in Japan) are offered.

If the Japanese Studies Institutions or Associations of Japanese Studies overseas wish to receive support from the Japan Foundation, please consult with the relevant Japan Foundation's overseas offices or nearest Embassy or Consulate-General of Japan.

2. Promotion of Intellectual Exchange between Japan and other countries

To deepen mutual understanding and to encourage intellectual contributions to help solve problems that confront the world, intellectual exchange programs (e.g. collaborative research and dialogue projects) are carried out.

3. Japan Foundation Center for Global Partnership

To promote collaboration between Japan and the United States with the goal of fulfilling shared global responsibilities and contributing to improvements of the world's welfare, CGP conducts its programs centered on intellectual exchange, grassroots exchange, and education.

E. FAQs

1. Application Procedures FAQs

Single Organization Applying for Multiple Projects

Q: If an organization plans multiple projects for within a single fiscal year and applies to programs for each one, is it possible that all the applications will be accepted?

A: We screen the details of each project individually, and in some cases, multiple projects are accepted.

Applying while Receiving Other Grants or Donations

Q: I am receiving grants (or donations) from another aid organization or business. Am I still eligible to apply for the Japan Foundation's program?

A: We encourage you to seek funds from other sources as well. However, the grants from the Japan Foundation and the other sources of funding must not duplicate funding coverage of identical parts of any project expenses.

Receiving Ongoing Grants

Q: Is an organization or individual that has received a grant in one year eligible to apply again the following year?

A: Yes. However, if you received a grant in the previous fiscal year for Grant Program for Cultural Presentation Abroad or Grant Program for Cultural Cooperation and you are applying for the same program again, the application will be given lower priority. Please note that you will have to wait a set number of years before you can apply again for a fellowship for individuals or a Japanese-language training program.

In principle, individuals or organizations that have received support from the same program for three consecutive fiscal years including the current fiscal year are not eligible for a grant for the fourth consecutive fiscal year.

2. Program Selection FAQs

One Project, One Program Principle

Q: Is it possible to apply for multiple programs for a single project? By doing so, is there a possibility for one project to receive support from more than one Japan Foundation program?

A: No. If you are unsure which program to apply to, please consult the Japan Foundation's office (or the nearest Japanese Embassy or Consulate-General, if the Japan Foundation doesn't maintain an office in your country of residence) for advice before preparing your application form.

More FAQs can be found on the Japan Foundation's website.

F. List of Programs

Program	Application Form	Eligibility		Application Deadline	Note	Page
		Area	Applicant			

I Arts and Cultural Exchange

1 The Introduction of Japanese Culture/International Cultural Cooperation/Leaders Exchange Program for Cultural Affairs among Citizen and Youth

(1) Grant Program for Cultural Presentation Abroad	QS-CPS	Japan/ Overseas	Organization/ Individual	Dec. 1, 2009, May 6, and Sep. 1, 2010		9
(2) Grant Program for Cultural Cooperation	QS-GPCC	Japan/ Overseas	Organization/ Individual	Dec. 1, 2009, May 6, and Sep. 1, 2010		10
(3) Grant Program for Cultural Affairs among Citizen and Youth	QS-GG	Japan	Organization	Dec. 1, 2009, May 6, and Sep. 1, 2010		11

2 Visual Arts Exchange

(1) Exhibitions Abroad Support Program	QZ-EAS	Overseas	Organization	Dec. 1, 2009		13
(2) Support Program for Art Event Abroad at the Grass-roots Level	QZ-SAG	Japan	Organization	Dec. 1, 2009		14

3 Performing Arts Exchange

(1) Grant Program for Overseas Performances	QB-GPP	Japan	Organization/ Individual	Dec. 18, 2009 May 6, and Sep. 1, 2010		15
(2) Performing Arts Japan for North America	-	Overseas	Organization	Nov. 2, 2009	USA (see details)	16
(3) Performing Arts Japan for Europe	-	Overseas	Organization	Oct. 16, 2009	Europe (see details)	17

4 Audio-Visual and Publication Exchange

(1) Support Program for Translation and Publication on Japan	QE-TPS	Overseas (Japan)	Organization	Nov. 20, 2009		17
(2) Support Program for Film and Visual Media Production on Japan	QE-FTP	Overseas (Japan)	Organization	Nov. 20, 2009		19
(3) Support for Overseas Activities for Youth and Citizen in the Area of Film, TV and Publication	QE-SYC	Japan	Organization	Dec. 1, 2009		20

II Japanese-Language Education Overseas

1 Promotion of Japanese-Language Education

Grant Program for Japanese-Language Education Activities	JN-FK	Overseas	Organization	Dec. 1, 2009	countries, without JF overseas offices	22
--	-------	----------	--------------	--------------	--	----

2 Training for Japanese-Language Teachers Abroad

(1) Training Programs for Leading Teachers of the Japanese-Language						23
1(1) Graduate Program on Japanese-Language and Culture (Master's Course)	NC-GP	Overseas	Individual	Dec. 1, 2009	Worldwide	23
2 Graduate Program on Japanese-Language and Culture (Doctor's Course)	NC-GPD	Overseas	Individual	Dec. 15, 2009 (to GRIPS)	Worldwide	25
2 Advanced Training Program for Teachers of the Japanese-Language	NC-AJT	Overseas	Organization/ Individuals*	Dec. 1, 2009	Worldwide *Individuals or teams of up to 3 people	26
(2) Training Programs for Teachers of the Japanese-Language						28

Program	Application Form	Eligibility		Application Deadline	Note	Page
		Area	Applicant			
1 Long-Term Training Program for Foreign Teachers of the Japanese-Language	NC-JT	Overseas	Organization	Dec. 1, 2009	Worldwide (except China)	29
2 Short-Term Training Program for Foreign Teachers of the Japanese-Language	NC-JT	Overseas	Organization	Dec. 1, 2009	Worldwide (except China)	30

3 Japanese-Language Programs for Specialists

Program for Specialists in Cultural and Academic Fields	KC-G	Overseas	Individual	Dec. 1, 2009		31
---	------	----------	------------	--------------	--	----

III Japanese Studies Overseas and Intellectual Exchange

1 Japanese Studies Overseas

Japan Foundation Japanese Studies Fellowship Program	RJS-FW	Overseas	Individual	Dec. 1, 2009	Concerning applicants from the U.S., please refer to "Applicants from the United States" on p. 4.	35
--	--------	----------	------------	--------------	---	----

2 Intellectual Exchange

Grant Program for Intellectual Exchange Conference						36
(Grant Program for Intellectual Exchange Conference)	RIE-RC	Japan/Overseas	Organization	Dec.1, 2009 May 6, 2010		36
(Grant for Human Resources Development)	RIE-RC	Japan	Organization	Dec. 1, 2010		37

3 The Japan Foundation Center for Global Partnership

(1) Grant Program	-	Japan/U.S.	Organization	Dec. 1, 2009		38
(2) Abe Fellowship	-	Japan/U.S.	Individual	Researchers : Sep. 1, 2009 Journalists : Sep. 15, 2009	Applications from US and Japan only	39
(3) Japan Outreach Initiative (JOI)	-	Japan/U.S.	Individual	Jan. 7, 2010		41

IV Others

(1) Authorizing the Use of the Name of the Japan Foundation as a Supporter	IC-NS	Japan/Overseas	Organization /Individual	Four weeks before the project		42
(2) Designated Donations Program	-	Japan/Overseas	Organization /Individual	October. 1, 2009 February 2, 2010 June 1, 2010	Draft application must be submitted one month prior to the application deadlines.	42

For more details, please refer to the relevant section.

I

Arts and Cultural Exchange

1 The Introduction of Japanese Culture, International Cultural Cooperation, and Leaders Exchange Program for Cultural Affairs among Citizen and Youth

App.Form: **QS-CPS**

1-(1) Grant Program for Cultural Presentations Abroad

Section in Charge: Culture and Society Section, Arts and Culture Department

Grants provide partial financial assistance for the overseas dispatch of specialists in Japanese culture to carry out lectures and cultural demonstrations (excluding performing arts and exhibitions) with the intention to deepen awareness and understanding of Japan abroad.

Eligibility In principle, individuals or organizations in Japan. Applications from overseas individuals or organizations may also be accepted; however, it is necessary to consult the nearest diplomatic mission of Japan or the nearest Japan Foundation overseas office in advance.

Qualified Projects

Applicable projects should fulfill the following conditions:

- 1) Duration: The project should commence (departure from Japan) between April 1, 2010, and March 31, 2011, and be completed within one month.
- 2) Genre:
 - a) Lectures, seminars, workshops, etc., on Japanese culture.
 - *Dispatches of academics to educational institutions (universities, etc.) or attendance to international conferences are not applicable for this Program.
 - b) Lecture-demonstrations of Japanese culture (including sports).
 - *Projects to promote the understanding on Japan and international mutual understanding primarily initiated by citizens and youths are also applicable for this Program.
 - *Projects that are primarily an exhibition are not applicable for this program. Please refer to the "Exhibitions Abroad Support Program" on p. 13.
 - *Projects that are primarily a performance (e.g., music, theater, dance, folkloric performing arts, etc.) are not applicable for this program. Please refer to the "Grant Program for Overseas Performances" on p. 15.

Grant Coverage

Partial or full coverage for international airfares (round-trip from the country of residence).

- *Financial assistance cannot be extended to more than 10 people.
- *International airfares are limited to IATA-PEX economy-class fares.
- *In some cases, accommodation expenses etc. may also be partly covered.

Number of grants for FY 2008

58 out of 95 applications

Selection Policy

- (1) The Japan Foundation will review applications and decide grantees under the following points:
 - a. Necessity: Does the project match the aim/purpose of the program and the needs in the area where the project takes place? Is it really necessary for the Japan Foundation to be involved in the project?
 - b. Effectiveness: Is the project concrete and feasible?
 - Past records and performances of implementing/co-operational organizations and participants.
 - Outcomes that are anticipated in the location where the project takes place.
 - c. Efficiency: Cost-benefit performance from the viewpoint of numbers of venues, activities and participants.
 - Adequacy of fund-raising and budget planning.

I

II

III

IV

- (2) Projects that relate to large-scale cultural exchange events will be given high priority (see p. 3).
- (3) Countries/regions with few Japanese cultural presentation projects will receive higher priority.
- (4) The following projects will receive low priority:
 - a. Projects that received financial assistance from the Japan Foundation in the previous year
 - b. Projects in less demand from the target country
 - c. Projects that are considered to be less effective in practice with lower artistic/academic/cultural quality and level
 - d. Projects that are planned for only one venue or that are considered to be less efficient in practice

Application Deadlines→Notification of Results

- (1) First deadline: December 1, 2009 (when the project starts in April 2010 or later)
→middle/end of February 2010
 - (2) Second deadline: May 6, 2010 (when the project starts in August 2010 or later)
→middle/end of June 2010
 - (3) Third deadline: September 1, 2010 (when the project starts in December 2010 or later)
→middle/end of October 2010
- *It is recommended that even applicants of projects scheduled to begin in August 2010 or later submit their applications as early, even by the first deadline of December 1, whenever possible.

App.Form: **QS-GPCC**

1-(2) Grant Program for Cultural Cooperation

Section in Charge: Culture and Society Section, Arts and Culture Department

Grants partially cover the expenses for the dispatch or invitation of specialists as a measure to support infrastructure development to foster human resources and international cultural exchange in the areas of: promotion of contemporary culture, the arts, sports, etc. of the counterpart country, as well as the preservation and utilization of tangible and intangible cultural heritages.

Eligibility In principle, individuals or organizations in Japan. Applications from overseas individuals or organizations may also be accepted; however, it is necessary to consult the nearest diplomatic mission of Japan or The Japan Foundation overseas office in advance.

Qualified Projects

Applicable projects should fulfill the conditions below:

- (1) Duration: The project should commence between April 1, 2010 and March 31, 2011 and finish by April 30, 2011.
- (2) Project content:
The Japan Foundation dispatches/invites cultural experts in categories that match the Program's mission. Priority will be given to projects demonstrating excellent collaboration and networking with counterparts both abroad and in Japan.

[Project Examples]

- (1) Specialist(s) from Japan in a field of cultural heritage are dispatched to give advice, instruction, etc. to counterparts in the recipient country. Alternatively, relevant persons from a particular country are invited to Japan, and may receive advice, instruction, etc.
 - (2) Similar projects to those outlined above can also be feasible in the fields of: contemporary culture, the arts, and sports. (e.g. music, theater, dance, film, photography, manga, animated films, arts and crafts, etc.)
 - (3) Similar projects to those outlined above for the purpose of enhancing the planning and management capacity of the following cultural organizations of the counterpart countries can also be feasible: museums, theaters, cultural centers, libraries, foundations, NPOs, etc.
- * This Program aims to promote cultural cooperation with counterpart countries and as such is not targeted at: result announcement of outcomes by specialists themselves, exhibitions or staged performances (e.g., music, theater, dance, folkloric entertainment etc). For overseas exhibitions and performances please refer to the "Exhibitions Abroad Support Program" on p. 13 or "Grant Program for Overseas Performances" on

p. 15.

The Grant Program for Cultural Cooperation for fiscal 2010, encourages applications that contribute to quality joint projects with cultural grant aid programs or building and reconstruction historical heritage devastated by conflicts or natural disasters.

[Project example]

Supporting civic activities to restore historical heritage damaged by natural disaster or to develop infrastructure for cultural exchange post-conflicts, The Japan Foundation encourages restoration of local cultural identity as well as resumption and revitalization of cultural projects.

Grant Coverage

Partial or full coverage for economy-class round-trip international airfare.

- *For not more than 10 people
- *International airfares equivalent to economy class IATA Special Excursion Fare (PEX)
- *In some cases, accommodation expenses, transportation costs of equipment, etc. may also be partly covered.

Number of grants for FY 2008

10 out of 29 Applications

Selection Policy

- (1) The Japan Foundation will review applications and decide grantees in terms of the following criteria;
 - a. Necessity: Does the project match the aim/purpose of the program and the needs in the area location where the project takes place? Is it really necessary for The Japan Foundation to be involved in the project?
 - b. Effectiveness: Is the project concrete and feasible?
 - Past records and performances of implementing/co-operational organizations and participants.
 - Outcomes that are anticipated in the location where the project takes place.
 - c. Efficiency: Cost-benefit performance from the viewpoint of numbers of venues, activities and participants.
 - Adequacy of fund-raising and budget planning.
- (2) The following projects will receive low priority:
 - a. Projects that received financial assistance from The Japan Foundation in the previous year
 - b. Projects in low demand from the target country or with low cultural cooperation contribution.
 - c. Projects that are considered to be less effective in practice with lower academic/cultural quality and level.
 - d. Projects that are considered to be less efficient in practice.

Application Deadlines→Notification of Results

- (1) First deadline: December 1, 2009 (when the project starts in April 2010 or later)
 - middle/end of February 2010
 - (2) Second deadline: May 6, 2010 (when the project starts in August 2010 or later)
 - middle/end of June 2010
 - (3) Third deadline: September 1, 2010 (when the project starts in December 2010 or later)
 - middle/end of October 2010
- *It is recommended that even applicants of projects scheduled to start in August 2010 or later submit their applications as early, even by the first deadline of December 1, whenever possible.

App.Form: **QS-GG****1-(3) Grant Program for Cultural Exchange among Citizen and Youth**

Section in charge: Culture and Society Section, Arts and Culture Department

Grants partially cover expenses for implementing projects to share experiences to deepen international mutual understanding implemented by organizations engaged in a wide range of grass-roots level activities both abroad and in Japan. This is a measure to foster leaders to promote mutual understanding as well as

Arts and Cultural Exchange

citizen/youth cultural exchange through international cultural exchange at the civic/local level abroad and in Japan.

Eligibility Non-profit organizations in Japan, undertaking cultural activities at the civic/local level. This includes entities that have organizational/responsibility systems established in a formal set of bylaws, or equivalent, and have clearly defined representatives/administrators.

Qualified Projects

Projects which meet all the conditions described below.

- (1) Projects to share experiences for promoting international mutual understanding primarily planned and implemented by citizens or youth. The Japan Foundation encourages applications which include components of mutual exchange through dialogue and collaboration.
- (2) Projects aiming to deepen international mutual understanding among citizens and youths through shared experiences (e.g. volunteer activities, communal life, sports, etc.)
- (3) Projects that commence and finish between April 1, 2010 and June 30, 2011.

In principle, this grant is not provided to the following types of projects

- Profit-making, religious and political activities and election campaigns
 - Projects whose themes are mainly in the field of the natural sciences, or of Japanese-language education
 - Projects whose achievements will be accredited only to specific organizations
 - Projects mainly focused on tourism
 - Arts exchange projects such as exhibitions, performances, films, etc. in Japan
- * Projects in the following areas that qualified in fiscal 2008 will be implemented under different programs.
- Projects promoting international mutual understanding through dialogues, etc. on concerns and issues common between Japan and other countries initiated by citizens and youths ⇒ "Grant Program for Intellectual Exchange Conference" (The appropriate Division in Japanese Studies and Intellectual Exchange Department)
 - Projects implemented abroad promoting understanding on Japan and international mutual understanding through cultural presentation activities (e.g. exhibitions, performances, cultural presentation, etc.) initiated by citizens and youths ⇒ "Grant Program for Cultural Presentation Abroad" (Culture and Society Section), "Support Program for Art Event Abroad at the Grass-roots Level" (Visual Arts Section), "Grant Program for Overseas Performances" (Performing Arts Section), "Support for Overseas Activities for Youth and Citizen in the Area of Film, TV and Publication" (Film, TV and Publication Section)

Grant Coverage

Each approved project will receive a maximum of 2 million yen for subsidizing for a portion of the following cost.

- International transportation (air/sea) from the airport/port closest to the residence of participants to the location of project implementation (International airfares are limited to IATA-PEX economy-class fares. Airport tax will be covered in case it is incorporated into the cost of the air tickets.)
- Accommodation expenses

Results of the Past Grant

In fiscal 2008: 66 projects were awarded from 226 applications. Average grant amount was 576,454 yen.

Screening Criteria

Based on the submitted applications, screening will be made under the following criteria. After consultations by the outside specialists, the decision will be made.

- Are the aims of the project congruent with the primary objectives and current program priorities of The Japan Foundation?
- Is the project based on the current needs and situation of the applicant's country, and efficient both for the country and for Japan?
- Is the project initiated by the wide range of citizens and youths, promoting dialogues, collaborations, and mutual understanding? Is it possible to develop and/or to activate multiple/comprehensive mutual exchange projects in the near future?
- Is the project effective to nurture individuals who will shoulder international exchanges of community

leaders and NGO/NPOs?

- Can formation and enhancement of civic network be expected?
- Can it be translated into a concrete reality (subject, preparation status, planned schedule and budget)?
- Is the project planned under mid and long-term perspectives? Do the results seem to be effective and to have an impact?
- Is this grant indispensable for the implementation of the project?
- Does applicant have prior experience that would indicate it is able to carry out the proposed project?
- Are the plan of the budget and numbers of participants appropriate to the objectives of the project?
- Is the applicant trying to raise funds from other donor institutions or applicant's own money?

Special consideration will be given to the projects, which conduct exchange with countries/region with few international citizen/youth cultural exchange with Japan, and the projects that relate to large-scale cultural exchange events. (see p. 3)

Deadline and Notification of Results

- 1) First deadline: December 1, 2009 (for projects to be implemented from April 2010 to March 2011)
→Early April, 2010
 - 2) Second deadline: May 6, 2010 (for projects to be implemented between August 2010 and March 2011)
→Early July, 2010
 - 3) Third deadline: September 1, 2010 (for projects to be implemented between December 2010 and June 2011)
→Early November, 2010
- *It is recommended that even applicants of projects scheduled to begin in August 2010 or later submit their applications as early, even by the first deadline of December 1, whenever possible.

2 Visual Arts Exchange

App.Form: **QZ-EAS**

2-(1) Exhibitions Abroad Support Program

Section in Charge: Visual Arts Section

This program is designed to provide financial assistance to exhibitions introducing Japanese art and culture to audiences overseas.

- Eligibility**
- (1) Applications from overseas museums and art institutions (i.e., located outside of Japan) will be considered.
 - (2) Applications from individuals cannot be accepted.

Eligible Projects

The grant is provided for exhibitions that

- (1) Open during fiscal 2010 (between April 1, 2010, and March 31, 2011); and
- (2) Introduce Japanese art and culture, are planned and executed by foreign museums or art institutions, and staged in the applicants' countries; or
- (3) Introduce Japanese artists and works in the context of international art exhibitions; or
- (4) Are created through artist-in-residence programs and promote the expansion of networks among artists, curators, and researchers in Japan and overseas.

Grant Coverage

Assistance will take the form of funding on a cost-sharing basis for the following expenses incurred and paid during the fiscal year in question. The maximum amount of grant will (in principle) be 1 million yen in total.

- (1) packing and shipping costs (not including insurance costs);
- (2) catalogue production costs;
- (3) traveling costs for dispatched or invited artists, curators, and specialists (not including costs such as preliminary research and development, etc.).

Number of Grants for FY 2009

54 out of 81 applications

I

II

III

IV

Selection Policy

- (1) Exhibitions with strong curatorial values that have not yet been staged in the applicants' countries will be given higher priority. Criteria for screening are as follows:
 - a. Necessity of grant by The Japan Foundation
 - b. Contents of exhibition
 - c. Adequacy of project plan/Organization for its implementation
- (2) Applications that relate to large-scale cultural exchange events will be given higher priority (see p. 3).
- (3) The following types of projects will be given lower priority:
 - a. exhibitions that are primarily part of friendship and goodwill activities between sister cities, schools or institutions;
 - b. exhibitions composed mainly of art works of public subscription;
 - c. exhibitions given by hobby groups or associations of like-minded persons;
 - d. exhibitions given by museums or organizations that have recently received financial support from The Japan Foundation.
 - e. traveling exhibitions that have previously received grants from The Japan Foundation.

Application Deadline December 1, 2009

Notification of Results April 2010

App. Form: **QZ-SAG**

2-(2) Support Program for Art Event Abroad at the Grass-roots Level

Section in Charge: Visual Arts Section

This program is designed to provide financial assistance to citizen-youth groups in Japan to plan and participate in international Art Events overseas. Art Events that facilitate mutual understanding and understanding of Japan through Japanese art and culture are sought.

Eligibility

- (1) Non-profit organizations based in Japan, undertaking cultural activities at the civic/local level. Including entities that have organizational/responsibility systems established in a form of a set of bylaws, or equivalent, and have clearly defined representatives/administrators.
- (2) Applications from individuals or foreign organizations cannot be accepted.

Eligible Projects

Eligible Projects must meet both of the criteria below:

- (1) Implemented during fiscal 2010 (between April 1, 2010, and March 31, 2011); and
 - (2) Deepen international mutual understanding or awareness and understanding of Japan through exchange activities that involve Japanese art and culture.
- * The following types of projects are not eligible.
- (1) Profit-making, religious and political activities and election campaigns
 - (2) Projects whose achievements will be credited only to specific groups/circles
 - (3) Projects mainly focused on tourism

Grant Coverage

Assistance will take the form of funding on a cost-sharing basis for the following expenses incurred and paid during the fiscal year in question. In principle, the maximum amount of this grant is 1,000,000 yen.

- (1) International transportation (air/sea) from the airport/port nearest to the residence of participants to the location of project implementation. (NB: International airfares are limited to IATA PEX class. Airport tax will be covered when included as part of the cost of the air tickets.);
- (2) Accommodation.

Number of Grants for FY 2009

6 out of 8 applications, average grant amount: 600,000 yen

Selection Policy

Based on the submitted applications, screening will be made in line with the following criteria. After consultations by outside specialists, a decision will be made.

- (1) Exhibitions with strong curatorial values that have not yet been staged in the applicants' countries will be given higher priority. Criteria for screening are as follows:
 - a. Necessity of grant by The Japan Foundation
 - b. Contents of art event
 - c. Adequacy of project plan/Organization for its implementation
- (2) The following projects will be given higher priority if they.
 - a. Relate to large-scale cultural exchange events (see p. 3);
 - b. Benefit participants from both Japan and the host country;
 - c. Emphasize dialogue, collaboration and mutual understanding by diverse grass-roots groups from broad geographical areas;
 - d. Expect positive ripple effects;
 - e. Efforts are made to diversify funding sources
- (3) Lower priority will be given to applications from institutions recently awarded Japan Foundation grants.

Application Deadline December 1, 2009

Notification of Results April 2010

3 Performing Arts Exchange

App.Form: **QB-GPP**

3-(1) Grant Program for Overseas Performances

Section in Charge: Performing Arts Section

Program Description

This program is designed to provide financial assistance for Japanese artists in the performing arts field who perform overseas or present international co-productions, as well as citizen/youth performance groups that implement international cultural exchanges at the local level with the public and young people through performing arts activities.

Basic Conditions

- (1) Qualified Areas: Worldwide
- (2) Application Method: Domestic applications (Standard application form QB-GPP).
- (3) Eligibility of applicants:

Category A

Applications should be made by by groups or individuals meeting any of the following criteria:

- (1) Japanese performing arts groups or individual artists in the fields of drama, music, dance, ethnic performing arts, etc., which are based in Japan and which have received invitations from overseas;
- (2) Japanese organizations, agencies that arrange and produce such projects as described above.

Category B

Non-profit organizations in Japan, undertaking cultural activities in the performing arts (eg. drama, music, dance, ethnic performing arts, etc.)

Eligibility of Projects

Parties should depart Japan on and after April 1, 2010.

*Projects that are given grants from other governmental organizations, government-affiliated corporations, or independent administrative institutions cannot be given grants from The Japan Foundation.

Japan Foundation Obligations

Part of the international transportation (airfare or ship/train fare) and freight costs:

A. International transportation costs: The lesser of the maximum amount allowed under the grant or actual

amount of the airfare will be applied.

The maximum subsidized amount is, in principle, an economy class IATA Special Excursion Fare (or equivalent economy class boat/train fare) multiplied by the subsidized rate (max. 80%) as stipulated by The Japan Foundation.

B. Freight costs: The lesser of the maximum amount allowed under the grant or actual amount of the freight will be applied.

The maximum subsidized amount is, in principle, the carrier's estimate (cargo fee, flight excess fee, etc.) multiplied by the subsidized rate (max. 50%) as stipulated by The Japan Foundation.

Number of Grants for FY 2009

54 out of 132 for fiscal 2009 1st Application, and 40 out of 106 for 2nd Application.

Selection Policy

Based on the submitted application and taking into account the views of several experts in each field, the application is screened in consideration of the following criteria.

- Artists and their work (past achievements, artistic level, future potential and pioneering approach, etc)
- System for program implementation (progress of preparations, reasonableness of budget estimates, appropriate sharing of costs with host, other efforts to raise money, reliability of host etc)
- Program content (specificity, feasibility, sustainability and development of plan; [as regards Category A] quality and spillover effect as arts exchange; [as regards Category B] extent to which program contributes to strengthening the cultivation and networks of artists who interact with the public and young people, extent to which program includes dialogue, collaboration and mutual understanding etc)
- Necessity in terms of foreign diplomacy, etc.
- Cost-benefit of performance, etc.

* The following projects may be given higher evaluation:

- a. Projects touring more than one country and city;
- b. Projects participating in important international festivals or large anniversary commemorations (see p. 3);
- c. Projects promoting exchanges in countries and regions with few opportunities for performing arts exchanges with Japan;
- d. Projects including cooperation through cultural programs towards post-disaster/conflict restoration;

* However, the following projects shall be given lower priority:

- a. Projects whose effect is restricted to exchanges between specific groups;
- b. Projects focused on activities other than performing such as sightseeing or research activities;
- c. Projects with poorly balanced budget estimates, such as plans in which the local sponsor is responsible for very little of the costs and the group bears an extremely high proportion of the costs itself.
- d. (for Category A) Projects organized by hobby groups that are primarily intended at creating goodwill;
- e. (for Category A) Projects that perform in only one place, or that travel to more than one location but involve very few performances.

Application Deadlines→Notification of Results

- (1) Application for December: December 18, 2009 (for projects which take place between April 2010 and November 2010)→late March, 2010
- (2) Application for May: May 6, 2010 (for projects which take place between August 2010 and March 2011)→mid July, 2010
- (3) Application for September: September 1, 2010 (for projects which take place between December 2010 and July 2011)→early November, 2010

3-(2) Performing Arts Japan ("PAJ") for North America

Section in Charge: Performing Arts Section
Acceptance of Application Forms: The Japan Foundation, New York

This program is designed to provide financial assistance for performances or co-productions in the U. S. that aim to introduce Japanese performing arts to local audiences.

The primary objectives of PAJ for North America are

- (1) To increase access to Japanese performing arts in the U.S., especially outside major metropolitan areas such as New York and Los Angeles;
- (2) To promote understanding of Japanese performing arts by providing educational programs for artists and audiences in each touring location; and
- (3) To support collaborative projects between American and Japanese performing artists.

Qualified Area U.S.A. ((however, toured areas may include Canada))

Application Deadline November 2, 2009

For detailed information, please contact The Japan Foundation, New York.

3-(3) Performing Arts Japan ("PAJ") for Europe

Section in Charge: Performing Arts Section
Acceptance of Application Forms: The Japan Cultural Institute in Paris

This program is designed to provide financial assistance for performances or co-productions in European countries that aim to introduce Japanese performing arts to local audiences.

The primary objectives of PAJ for Europe are

- (1) To increase access to Japanese performing arts in Europe, especially outside major metropolitan cities;
- (2) To promote understanding of Japanese performing arts by providing educational programs for artists and audiences in each touring location; and
- (3) To support collaborative projects between European and Japanese performing artists.

Qualified Area Applications for this program can only be accepted from groups, which are based in the following countries: Albania, Andorra, Austria, Belgium, Bosnia and Herzegovina, Bulgaria, Czech, Croatia, Cyprus, Denmark, Estonia, Finland, France, Germany, Greece, Hungary, Iceland, Ireland, Italy, Kosovo, Latvia, Liechtenstein, Lithuania, Luxembourg, Macedonia, Malta, Moldova, Monaco, Montenegro, the Netherlands, Norway, Poland, Portugal, Romania, San Marino, Serbia, Slovakia, Slovenia, Spain, Sweden, Switzerland, U.K, the Vatican.

Application Deadline October 16, 2009

For detailed information, please contact The Japan Cultural Institute in Paris.

4 Audio-Visual and Publication Exchange

App.Form: **QE-TPS**

4-(1) Support Program for Translation and Publication on Japan

Section in Charge: Film, TV and Publication Section

To promote Japanese studies and a better understanding of Japan abroad, this program provides support to projects related to translating and/or publishing Japanese works related to: humanities, social sciences and the arts and, publishing books which introduce Japanese culture that are written in foreign languages.

This program's objective is to encourage foreign publishers to publish Japan-related books that are difficult to publish commercially by assisting with reduction of selling price, and thus making the books more accessible to a broader cross-section of readers in the general public and thus to enhance better understanding of Japan.

Eligibility of Applicants

Overseas publishers (corporations). Domestic publishers may also apply only if there is a written contract/agreement with foreign book distribution companies.

Individuals such as authors and translators are not eligible to apply.

Eligible Projects

- Translation and/or publication of works

- Publication of newly written works

(1) Requirements:

a. Common Requirements:

(a) The works indicated here refer to materials that promote a deeper understanding of Japanese culture abroad in the fields of the humanities, the social sciences, and the arts.

(b) Projects must be completed between April 1, 2010 and February 28, 2011.

b. Translation:

(a) Translation must be made directly from the original work. Retranslation of works already translated into another language will be considered for applications from the countries where the number of translators is limited.

(b) Approval must have previously been obtained from the original copyright holder allowing translation and publication of the work (in case of making retranslation, also approval from the translator of the text should be obtained).

(c) Contract that establishes the amount of the translator's fee must be concluded between the publisher and the translator(s). Paying the translator's fee through royalties is not acceptable.

(d) Applications can be accepted at either stage of progress, during or after completion of the translation. (If the translation is not completed at the time of application, it must be completed by February 28, 2011.)

c. Newly written works: The manuscript should be completed at the time of application.

(2) The following projects will be given priority if:

(in case of newly written works)

a. The publication of the book is considered to give wide influence on the society, readers and researchers in the applicant's country.

b. Works written from a contemporary viewpoint (whether the theme belongs to the present or the past).

c. Works with creative viewpoints by younger researchers, journalists, writers, etc.

d. International joint projects by several authors.

(in case of translation)

a. The publication of is considered to give wide influence on the society, readers and researchers in the applicant's country.

b. In the case of first introduction of the writer in the applicant country, moreover in the case of world premier.

c. Translation directly from Japanese into a language with small users.

*(Common) Works written or chosen for translation should not be too specialized but appeal to the wide public. These priorities cited above will be considered when applicant's publishing plan, budget and schedule are concrete and feasible.

(3) The following projects will not be considered:

a. projects that will be used for religious or political purposes;

b. periodicals, special issues, proceedings;

c. museum catalogues, guidebooks, pamphlets;

d. works not to be expected for wide-distribution, including ones only to be distributed for free;

e. language dictionaries and Japanese teaching materials.

Coverage

Support is provided for a portion of the following costs. In principle, the amount of the assistance will not exceed JPY 1,000,000.

1) Translation: A portion of the translator's fee (between 40% and 60%).

2) Publication: A portion of the printing and binding costs (between 25% and 50%).

*Please note that the percentage will be decided by The Japan Foundation, according to the genre of the book, publishing situation in the applicant's country, etc.

*Please also note that, in case of translation, the maximum amount of subsidy is JPY 2,000,000 when both applications for translation support and publication support are successful.

Number of Grants for FY 2009

84 out of 138 applications

Criteria

- (1) Quality of the contents and translation of the work
- (2) Concrete publication plans
- (3) Necessity in the region or language of the work

Application Deadline November 20, 2009

Notification of Results April, 2010

Remarks Remittance of the financial support will be made upon the completion of the project.

App.Form: **QE-FTP**

4-(2) Support Program for Film and Visual Media Production on Japan

Section in Charge: Film, TV and Publication Section

To promote Japanese studies and a better understanding of Japan abroad, this program provides assistance for the production of films, TV programs, and other visual materials.

Eligibility Organizations abroad with knowledge and proven experience in the field of film-making are eligible to apply for this program; Individual application will not be considered. If the projects have a high probability of being shown to the general public as either on television broadcasts or at film festivals abroad, and there is an objective and logical reasons, domestic applications can be accepted.

Qualified projects

- (1) Production of film and visual materials in foreign languages, including documentary films, television programs, and video works that handle Japanese subjects, excluding fictions. Projects should be completed within the fiscal year in which they receive support (between April, 2010 and February, 2011).
Japanese-language teaching materials are not eligible.
- (2) Works intended for release to the general public in the form of either television broadcasting or film festivals.
- (3) Works produced from a contemporary viewpoint (whether the theme belongs to the present age or the past).

Coverage Assistance will not exceed one-half of the total production costs, and is limited to a maximum of ¥5 million. Assistance will be remitted only after completion of the project.

Number of Grants for FY 2009

13 out of 48 applications

Criteria

- (1) Quality of the contents
- (2) Production scheme (probability of completion)
- (3) Effectiveness of the completed work

Application Deadlines November 20, 2009

Notification of Results April, 2010

I

II

III

IV

4-(3) Support Program for Overseas Activities for Youth and Citizen in the Area of Film, TV and Publication

Section in Charge: Film, TV and Publication Section

This Program is designed to support a portion of the travel expenses of event(s) which a Japanese citizen/youth organization plans/holds overseas. Events that facilitate mutual understanding and understanding of Japan through Japanese art and culture are sought in film, TV and publication.

- Eligibility**
- (1) Non-profit organizations based in Japan, undertaking cultural activities at the civic/local level. This includes entities that have organizational/responsibility systems established in the form of a set of by-laws or equivalent, and have clearly defined representatives/administrators.
 - (2) Applications from individuals or foreign organizations are ineligible.

Eligible Projects

Eligible Projects must meet both of the following criteria:

- (1) Implemented during fiscal 2010 (between April 1, 2010, and March 31, 2011); and
- (2) Deepen international mutual understanding or awareness and understanding of Japan through exchange activities that involve Japanese film, TV and publications.

* The following types of projects are ineligible:

- (1) Profit-making, religious and political activities and election campaigns
- (2) Projects whose achievements will be credited only to specific groups/circles
- (3) Projects mainly focused on tourism

Grant Coverage

Assistance will take the form of funding on a cost-sharing basis for the following expenses incurred and paid during the fiscal year in question. In principle, the maximum amount of this grant is 1,000,000 yen.

- (1) International transportation (air/sea) from the airport/port nearest to the residence of participants to the location of project implementation (international airfares are limited to IATA PEX class. Airport tax will be covered when incorporated into the cost of the air tickets);
- (2) Accommodation.

Number of Grants for FY 2008

3 out of 3 applications, average grant amount: 600,000 yen

Selection Policy

- (1) The Japan Foundation selects projects to be awarded grants based on the results of screening by specialists and, the diplomatic priority of the project. Selection criteria are as follows:
 - a. Necessity of grant by The Japan Foundation
 - b. Program content
 - c. Adequacy of project plan/Organization for its implementation
- (2) Following projects are given higher priority when they:
 - a. Relate to large-scale cultural exchange events;
 - b. Benefit participants from both Japan and the host country;
 - c. Emphasize dialogue, collaboration and mutual understanding by diverse grass-roots groups from broad geographical areas;
 - d. Expect positive ripple effects;
 - e. Endeavour to diversify funding sources
- (3) Lower priority will be given to applications from organizations recently awarded The Japan Foundation grants.
- (4) Grants will not be made to the following types of projects:
 - a. Profit-making, religious, political activities or election campaigns;
 - b. Outcomes will only be enjoyed by specific groups/circles;
 - c. Mainly involving tourism.

Application Deadline December 1, 2009

Notification of Results April 2010

I

II

III

IV

II

Japanese-Language Education Overseas

1 Promotion of Japanese-Language Education

App. Form: **JN-FK**

Grant Program for Japanese-Language Education Activities

Section in Charge: Sakura Network Section

This Program aims to partially support Japanese-language education activities by targeting Japanese-language teachers and students of Japanese-language institutions and organizations, in countries and regions that cannot readily access direct support from The Japan Foundation overseas offices.

Eligibility

Non-profit Japanese-language institutions and organizations, including Japanese-language teacher associations and academic societies in countries in which there are no Japan Foundation offices (excluding: South Korea, China, Indonesia, Thailand, the Philippines, Vietnam, Malaysia, India, Australia, Canada, US, Mexico, Brazil, Italy, UK, Spain, Germany, France, Hungary, Russia, and Egypt). However, organizations are not eligible when national laws restrict receipt of aid from organizations affiliated with governments..

For the countries which have The Japan Foundation overseas offices are not eligible to this program. All the support will be given via the overseas offices. Please contact the nearest office for available programs.

Grant Coverage

Grants partially defray expenses related to Japanese-language education activities carried out by overseas Japanese-language institutions and organizations. Examples of eligible programs for this support are given below. Applicants may also submit their original projects or a combination of multiple programs:

- A. Japanese-Language Activities Support Grant: Grants partially defray some costs related to holding programs (eg. speech/debate contests and, presentations etc) intended to motivate students and stimulate interest in Japanese-language education in the region. **The Japan Foundation cannot ship actual prizes for speech contests from Japan.**
- B. Staff Expansion Grant: This grant partially defrays emoluments to Japanese-language teachers when applicants start a new Japanese-language course or increase the number of courses. However, grants are limited to programs that are expected to run independently without need of a grant from The Japan Foundation in the near future. **(Grants are not given to support existing posts.)**
- C. Teaching Material Purchase Grant: This grant partially defrays the cost of purchasing teaching materials and supplementary materials needed by Japanese-language teachers when conducting Japanese-language courses. "Program for the Donation of Japanese-Language Teaching Materials" has been united to this program, but **The Japan Foundation cannot send actual teaching materials from Japan.**
- D. Conference Grant: This grant partially defrays the cost involved in holding seminars, workshops, symposiums and training sessions for Japanese-language teachers.
- E. Publication Grant: This grant partially defrays the cost involved in preparing and publishing teaching materials consistent with the local curriculum and needs.
- F. Other Original Proposals: This grant partially defrays the cost involved in implementing projects planned by the applicant that aim to promote Japanese-language education and train Japanese-language teachers.

Selection Method

Applications will be reviewed from the following perspectives and a decision will be made in light of the opinions of external experts:

- Role of grantee institution in the country or region
- Specific outcome expected
- Ripple effect on diffusion of Japanese-language in the country or region
- Coalitions with other organizations and groups
- Ability to raise funds (including self funding) from sources other than The Japan Foundation.
- Feasibility of the proposal (program to be implemented, framework, schedule, etc.)

Application deadline December 1, 2009

Notification Date April 2010

2 Training for Japanese-Language Teachers Abroad

App. Form: **NC-GP,NC-GPD,NC-AJT**

2-(1) Training Programs for Leading Teachers of the Japanese Language

Section in Charge: Teachers Training Sec.
The Japan Foundation Japanese-Language Institute, Urawa

These programs aim to advance the level of education and nurture research capabilities in persons playing a leading role in the teaching of Japanese-language on a national or regional level, and individuals who are expected to play a leading role in Japanese-language education in the future.

Programs fall into one of three categories, depending on the target and training content.

App. Form: **NC-GP**

2-(1)-1(1) Graduate Program on Japanese Language and Culture (Master's Course)

This program is designed to provide teachers of the Japanese language abroad and/or individuals who have experience in teaching the Japanese-language abroad, who are expected to be leaders of the academic world of Japanese-language education in their own countries, with an opportunity to obtain a Master's degree in Japanese-language education. This post graduate program is offered by the following two institutions:

- (1) The Japan Foundation Japanese-Language Institute, Urawa (JFJLI)
- (2) The National Graduate Institute for Policy Studies (GRIPS)

Eligibility

Applications from individuals are acceptable. A recommendation from a representative of the institution(s) with which candidates are affiliated is also required.

The following candidates are eligible:

- (1) Teachers of the Japanese language belonging to institutions conducting Japanese-language education, or governmental organizations (e.g. Ministry of Education), who are able to obtain approval from a representative of the institution with which they are affiliated to participate in a Japan Foundation program;
- (2) Individuals who hold a Bachelor's degree or its equivalent from an accredited university;
- (3) Individuals with Level 1 Japanese language proficiency assessed by the Japanese-Language Proficiency Test (Nihongo Noryoku Shiken) or its equivalent (i.e. be able to read Japanese research documents, hold discussions in Japanese and write research reports);
- (4) Individuals with at least two years experience in teaching the Japanese language as of December 1, 2009 (private lessons and assistant teachers not included);
- (5) As a general rule, individuals under the age of 44 as of April 1, 2010;
- (6) Individuals who have not completed their compulsory education (elementary and junior high school, 9 years) in Japan;
- (7) Applicants who have not taken a Japanese-language teacher-training program conducted by the Japan Foundation (including the Short-Term Training Program for Foreign Teachers of the Japanese Language) or any other academic institutions in Japan for more than two months (during the period from October, 2009 to September 2010);
- (8) Individuals who are nationals of a country that has diplomatic relations with Japan;
- (9) Individuals in good physical and mental health; and
- (10) Individuals who are expected to contribute to the Japanese language education in their home country after the program.

Japanese-Language Education Overseas

Course Venues The Japan Foundation Japanese-Language Institute, Urawa (for certain coursework: The National Graduate Institute for Policy Studies)

Grant Coverage

- (1) Round-trip airline ticket (discount economy-class).
- (2) Airport tax and foreign travel tax.
- (3) Accommodation (a single room for each participant) in The Japan Foundation Japanese-Language Institute, Urawa (Kita Urawa, Urawa ku, Saitama City, Saitama Prefecture), not allowed to be accompanied by family.
- (4) Meals during the program (partly in the form of cash allowances), and a set allowance to cover miscellaneous living expenses.
- (5) Expenses necessary for participation in the curriculum (tuition at The National Graduate Institute for Policy Studies (GRIPS)).
- (6) National Health Insurance fee

Duration September 2010-September 2011 (1 year)

Curriculum Contents (for example)

- (1) Japanese Language
- (2) Japanese-Language Education
- (3) Japanese Society/Culture/Area Study
- (4) Seminar for Special Theme

Degree

- (1) Individuals who have successfully completed the required units will be conferred a Master's degree in Japanese Language and Culture by JFJLI and GRIPS, and be given a Certificate by JFJLI.
- (2) Individuals who have not completed the required units will be given a Certificate by JFJLI.

Number of Participants

Approximately 10 teachers (2009: 8 out of 38 applications)

Selection Policy

- (1) Priority given to applicants from the nations below; Asia and Oceania (excluding Korea, Singapore, Brunei, Australia, New Zealand, and Hong Kong residents in China who hold a BNO or Hong Kong SAR passport), Central and South America (excluding Bahamas), Eastern Europe (excluding Slovenia), Middle East and North Africa (excluding U.A.E., Israel, Qatar, Kuwait, Saudi Arabia and Bahrain), Africa.
- (2) Applicants who meet the application requirements will be judged according to four criteria:
 - ① Need: consideration of importance of Japanese-language teaching programs in applicant's country and also of necessity in terms of the whole project scheme related to overseas Japanese-language education of the Japan Foundation
 - ② Effectiveness: judged by the applicant's teaching position (full-time/part-time), influence in and out of school etc.
 - ③ Efficiency of the training program: applicant's Japanese language proficiency, teaching experience, studying experience in Japan, sufficient academic ability as a researcher to get a Master's degree and so on.
 - ④ Possibility of further development of the candidate: applicant's motivation to be a leader of the academic world of Japanese education in applicant's country and also by Referee's description of the applicant.

Application Deadline December 1, 2009

Notification of Results April, 2010

Remarks

- (1) Candidates will be screened by examination of their applications and supporting documents. Candidates satisfying the eligibility requirements for the program may be requested to present for an interview and sit a written examination. The JFJLI/GRIPS admissions committee will make the final decision. The schedule and venue of interviews is yet to be finalized.
- (2) Candidates for this program may also simultaneously apply to other programs such as Training Programs for Teachers of the Japanese Language or Advanced Training Program for Teachers of the Japanese

Language. Candidates will only receive one grant even if they are successfully accepted to several programs.

App. Form: **NC-GPD**

2-(1)-1(2) Graduate Program on Japanese Language and Culture (Doctor's Course)

The program is designed to provide teachers of the Japanese language abroad and/or individuals who have experience in teaching the Japanese language in overseas Japanese language institutions with an opportunity to complete a three-year doctoral course in Japanese language education with the aim of developing them as future leaders of the academic world of Japanese-language education in their own countries.

Apart from the Japan Foundation Japanese-Language Institute (JFJLI), the Program is being implemented in collaboration with the National Graduate Institute for Policy Studies (GRIPS) and is structured with an advanced and practical curriculum. For details, please refer to the Japan Foundation website

(http://www.jpf.go.jp/urawa/trnng_t/trnng_t.html)

or the GRIPS website

(<http://www.grips.ac.jp/index-e.html>)

Application forms may also be downloaded from the websites of the Japan Foundation and GRIPS.

Eligibility

Individuals who can apply for this program must be able to fulfill the requirements given in (1) and (2).

(1) Individuals who fulfill all of the following requirements:

- a. Individuals who, at the time of application have at least two years experience as Japanese language instructors, specialists in Japanese language education and research, or administrators involved in the formulation of Japanese language education policy and who aspire to take an active role as future leaders in their own countries;
- b. Individuals who can present letters of recommendation from two people who are capable of evaluating the applicants' abilities and potential for future Japanese language education-related responsibilities;
- c. Individuals with Level 1 Japanese language proficiency assessed by the Japanese-Language Proficiency Test (Nihongo Noryoku Shiken) or its equivalent;
- d. Individuals under the age of 45 at the time of application;
- e. Individuals who have not previously held nor currently hold Japanese citizenship;
- f. Individuals who are nationals of a country that has diplomatic relations with Japan;

(2) Individuals who fulfill at least one of the following requirements:

- a. Individuals who possess a master's degree (including equivalent degrees obtained abroad) or by the time of admission into the Program are prospective candidates for a master's degree in any of the following fields: Japanese language education, Japanese language and Japanese studies;
- b. Individuals who have graduated from a university and at the time of application, have engaged in research at a university, research institute, etc., for at least two years and are recognized, based on their research work, to demonstrate academic abilities equivalent to those who possess master's degrees;
- c. Individuals who, based on individual screening for admission eligibility to this program, are recognized to demonstrate academic abilities equivalent to those who possess master's degrees in the areas of Japanese language education, Japanese language or Japanese studies and are at least 24 years old at the time of admission to the Program.

Course Venues

The Japan Foundation Japanese-Language Institute (for certain coursework: The National Graduate Institute for Policy Studies)

Grant coverage to be provided by the Japan Foundation Japanese-Language Institute

- (1) Admission fees and tuition
- (2) Living allowance: Amount equivalent to the Japanese Government scholarship for foreign students (170,000 yen monthly allowance, 160,000 yen from the thirteenth month as of 2007) However, the allowance will be provided for a period of only up to three years.
- (3) Travel expenses: Round-trip airline ticket for the shortest route from the airport nearest the applicant's

I

II

III

IV

residence to Narita Airport (As a rule, discount economy class)

(4) Arrival allowance: 25,000 yen

Duration October 2010-September 2013

Degree PhD in Japanese Language and Culture, PhD in Japanese Language Education

Number of grants
approximately 3 (2008: 1 out of 17 applications)

Application Deadline January 15, 2010

Notification of Results April, 2010

Remarks (1) After the screening of the application forms and other documents, successful candidates will undergo a written examination and interview for the second stage of the screening.
(2) Applicants must submit directly to GRIPS no later than December 20 (tentative)
(3) For details of the program outline and other information, please refer to the Japan Foundation website (http://www.jpf.go.jp/j/urawa/trnng_t/trnng_t.html) or the GRIPS website (<http://www.grips.ac.jp/index-e.html>).

App. Form: **NC-AJT**

2-(1)-2 Advanced Training Program for Teachers of the Japanese-Language

The Advanced Program is designed for individuals or teams of up to 3 people who:

- require more advanced expertise and skills as teachers of Japanese, and
- have specific challenges they wish to address, or
- have issues they want to resolve in the teaching of the Japanese language (e.g. the development of Japanese teaching materials, teaching methods, or curriculums, etc).

Teams can apply for the program to accomplish certain projects. However, only 3 people from any team can participate in the program.

Applications for this course can be accepted either from native or non-native speakers of Japanese.

Eligibility Overseas educational organizations that carry out Japanese-language education (applications from individuals will not be accepted. Team application should be submitted by the team leader's institution).

The following candidates are eligible

- (1) Individuals who have an employment relationship with the applying organization where it is agreed they will continue working in the aforementioned organization after their return to their home country. Full-time teachers will be given preference. In case of team application the members do not have to belong to the same institution of the same country;
- (2) Those who have a proficiency in Japanese of Level 1 in the Japanese Language Proficiency Test (Nihongo Noryoku Shiken) or its equivalent (i.e. be able to read Japanese research documents, hold discussions in Japanese and write research reports);
- (3) Those who have at least five years of experience in teaching the Japanese language as of December 1, 2009 (private lessons not included);
- (4) Those who have not taken a Japanese-language teacher training program conducted by the Japan Foundation (including the Short-Term Training Program for Foreign Teachers of the Japanese Language) or any other academic institutions in Japan for more than two months during the period from October 2008 to December 2009;
- (5) Individuals under the age of 55 as of December 1, 2009;

- (6) Individuals who are Japanese nationals or a nationality of a country that has diplomatic relations with Japan; and
- (7) Individuals in good physical and mental health.

Grant Coverage

- (1) Round-trip airline ticket (as a general rule, discount economy class).
- (2) Airport tax and foreign travel tax
- (3) Accommodation (a single room for each participant) in The Japan Foundation Japanese-Language Institute, Urawa (Kita Urawa, Urawa Ku, Saitama City, Saitama Prefecture).
- (4) Meals during the program (partly in the form of cash allowances) and a set allowance to cover miscellaneous living expenses.
- (5) Expenses necessary for participation in the official training curriculum (such as transportation and teaching materials).
- (6) Overseas travel accident insurance for disease and injury during the period of the program.

Duration May 26, 2010-July 23, 2010 (tentative)

Description of the Program (for example)

Research activities will consist of lectures, one-on-one (or team) guidance and discussion among trainees. Program structure will depend on challenges and issues submitted at the time of application. Challenges and issues can relate to a variety of themes; including pedagogic method research, syllabus development and textbook compilation planning. Participants are requested to submit reports on the result of the training within a year after the training is completed. It is hoped that results are ultimately made public and published, in the form of an academic paper, syllabus, or text book.

In cases where the program requires long-term investigation and work, and where it is recognized that a return visit to Japan will have a significant effect on the results of training, it is possible for individuals to reapply to join the training course the following fiscal year.

Number of Participants

Approximately 10 individuals or teams (8 (7 teams) out of 33 applicants (30 teams) for FY 2009)

Selection Policy

- (1) Applicants who meet the application requirements will be judged according to four criteria:
 - a. Need: consideration of importance of Japanese-language teaching programs in applicant's country and also of necessity in terms of the whole project scheme related to overseas Japanese-language education of the Japan Foundation.
 - b. Effectiveness: judged by the applicant's teaching position (full-time/part-time), influence in and out of school etc.
 - c. Efficiency of the training program: judged by the applicant's Japanese language proficiency, teaching experience, studying experience in Japan, enough academic ability.
 - d. Possibility of further development of the candidate: examination of the applicant's motivation to be a leader of the academic world of Japanese education in applicant's country and also by Referee's description of the applicant.
- (2) Regarding projects on developing teaching materials and syllabuses, ones that have already been in progress will be given preference.
- (3) Team application may be given priority depending on topics of projects.
- (4) Priority given to applicants from the nations below; Asia and Oceania (excluding Korea, Singapore, Brunei, Australia, New Zealand, and Hong Kong residents in China who hold a BNO or Hong Kong SAR passport), Central and South America (excluding Bahamas), Eastern Europe (excluding Slovenia), Middle East and North Africa (excluding U.A.E., Israel, Qatar, Kuwait, Saudi Arabia and Bahrain), Africa.

Application Deadline December 1, 2009

Notification of Results April, 2010

Remarks Candidates for this program may also apply to the other programs such as Training Programs for Teachers of

I

II

III

IV

the Japanese Language or Graduate Program on Japanese Language and Culture (Master's Course) simultaneously. Candidates can only receive one grant even if they are successfully accepted to several programs.

App. Form: **NC-JT**

2-(2) Training Programs for Teachers of the Japanese-Language

Section in Charge: Teachers Training Sec.
The Japan Foundation Japanese-Language Institute, Urawa

These programs are designed to provide teachers of the Japanese language abroad with an opportunity to improve their Japanese language skills and teaching methodology and to deepen their knowledge of Japan at the Japan Foundation Japanese-Language Institute, Urawa (Saitama City, Saitama Prefecture, Japan).

The following two types of programs are open to application from overseas teachers of the Japanese language in accordance with their level of proficiency and purposes:

- (1) Long-Term Training Program for Foreign Teachers of the Japanese-Language
- (2) Short-Term Training Program for Foreign Teachers of the Japanese-Language

Eligibility Overseas educational organizations that carry out Japanese-language education (applications from individuals will not be accepted), except organizations in China (excluding Hong Kong and Macao, which will participate in a separate program (The Intensive Training Program for University Teachers and Secondary School Teachers of the Japanese Language from the People's Republic of China).

Course Venue and Lodging

The Japan Foundation Japanese-Language Institute, Urawa (Kita Urawa, Urawa Ku, Saitama City, Saitama Prefecture)

Grant Coverage

- (1) Round-trip airline ticket (as a general rule, discount economy class), to and from the nearest international airport from home residence, airport tax, foreign travel tax, a set amount of allowances to cover miscellaneous living expenses and transportation fee are provided to participants who are nationals of the countries of the following regions;

Asia and Oceania (excluding Korea, Singapore, Brunei, Australia, New Zealand, and Hong Kong residents in China who hold a BNO or Hong Kong SAR passport), Central and South America (excluding Bahamas), Eastern Europe, Middle East and North Africa (excluding U.A.E., Israel, Qatar, Kuwait), Africa.

*For those who are nationals of countries other than the regions above, participants themselves have to bear the expenses of airline ticket and miscellaneous living expenses etc.

- (2) Accommodation (a single room for each participant) in the Institute.
- (3) Meals during the program (partly in the form of cash allowances)
- (4) Expenses necessary for participation in the official training curriculum (such as teaching materials).
- (5) Overseas travel accident insurance for disease and injury during the period of the program.

Selection Policy

Applicants who meet the application requirements will be judged according to four criteria:

- (1) Need: consideration of importance of Japanese-language teaching programs in applicant's country and also of necessity in terms of the whole project scheme related to overseas Japanese-language education of the Japan Foundation.
- (2) Effectiveness: applicant's teaching position (full-time or part-time), influence in and out of school etc.
- (3) Efficiency of the training program: applicant's Japanese language proficiency, teaching experience, studying experience in Japan, composition writing skill and so on.
- (4) Possibility of further development of the candidate: applicant's voluntary participation in training programs and also by Referee's description of the applicant.

Application Deadline→Notification of Results

December 1, 2009→April, 2010

2-(2)-1 Long-Term Training Program for Foreign Teachers of the Japanese-Language

This program is intended for foreign teachers who are early in their career in teaching the Japanese-language. A training course in the Japanese-language and basic teaching methods will be conducted.

Duration September 15, 2010-March 11, 2011 (tentative)

Eligibility The following candidates are eligible to participate in the program:

- (1) Individuals who have an employment relationship with the applying organization where it is agreed that they will continue working in the aforementioned organization even after their return to their home country. Current undergraduates and those currently studying to become Japanese language teachers are not eligible;
- (2) Individuals who have been involved in teaching the Japanese language for more than six months and less than five years as of December 1, 2009 (private lessons not included);
- (3) Individuals who have not taken a Japanese-language teacher-training program conducted by the Japan Foundation or any other academic institutions in Japan for more than two months during the period from April 2004 to December 1, 2009;
- (4) Individuals who have not previously participated in the Short-Term Training Program for Teachers of the Japanese-Language or the Graduate Program on Japanese Language and Culture conducted at the Japan Foundation Japanese-Language Institute, Urawa. Individuals who have taken Special Training Program for young teachers of the Japanese Language from South Asia/East Asia implemented as part of "the Japan-East Asia Network of Exchange for Students and Youth" (JENESYS) program are able to apply;
- (5) Individuals who, at the time of application have proficiency in Japanese of Level 3 in the Japanese-Language Proficiency Test (having acquired elementary grammar, 300 kanji, and 1,500 vocabulary words, enabling them to engage in useful daily conversations, and read and write simple sentences).
If candidates have never taken the Japanese-Language Proficiency Test, they are requested to answer the questions in the Japanese Proficiency Self-Check Test attached to the application form and write down the test score in the designated columns in the application;
- (6) Individuals under the age of 35 as of December 1, 2009;
- (7) Individuals who have not completed their compulsory education (elementary and junior high school, 9 years) in Japan.
- (8) Individuals who are nationals of a country that has diplomatic relations with Japan; and
- (9) Individuals in good physical and mental health.

Description of the Program (for example)

- (1) Subjects:
 - a. Japanese language. The aim of the Japanese-language classes is to improve Participants' proficiency in Japanese to intermediate or advanced-level. Participants are also expected to gain the analytic knowledge necessary to teach Japanese.
Classes: practical training in speaking, reading comprehension, oral comprehension, grammar and writing of the Japanese-language
 - b. Japanese-language teaching methods. The aim of these classes is to enable participants to understand the basic Japanese-language teaching methodology, and to improve participants' knowledge and ability as Japanese-language teachers.
- (2) Cultural programs: field trips, home-stay programs, visits to local schools, cultural demonstrations of calligraphy and other traditional arts, theatre excursions, etc.

Number of Participants

Approximately 40 teachers (45 out of 184 applications for FY 2009)

I

II

III

IV

2-(2)-2 Short-Term Training Program for Foreign Teachers of the Japanese-Language

An intensive two-month course in the Japanese-language and teaching methods will be conducted for foreign teachers of the Japanese-language who have at least two years of experience in teaching the Japanese-language.

Duration Three times a year, two months each. Each course is designed for a different group of candidates.

- (1) Spring Course (May 12, 2010-July 2, 2010 [tentative]): Designed for teachers engaged in primary and secondary education, and those who teach younger children.
- (2) Summer Course (July 14, 2010-September 3, 2010 [tentative]): Designed for teachers engaged in higher and adult education, primary and secondary education, those who teach younger children.
- (3) Winter Course (January 26, 2011-March 18, 2011 [tentative]): designed for teachers engaged in higher and adult education.

Eligibility The following individuals are eligible to participate in the program:

- (1) Teachers who have an employment relationship with the applying organization where it is agreed they will continue working in the aforementioned organization even after their return to their home country. Undergraduates and individuals currently studying to become Japanese language teachers are not eligible;
- (2) Individuals who have at least two years of experience in teaching the Japanese-language as of December 1, 2009 (private lessons not included);
- (3) Individuals who have not taken a Japanese-language teacher-training program conducted by the Japan Foundation (including the Short-Term Training Program for Foreign Teachers of the Japanese Language) or any other academic institutions in Japan for more than two months during the period from April 2004 to December 1, 2009. Individuals who have taken Special Training Program for young teachers of the Japanese Language from South Asia/East Asia implemented as part of "the Japan-East Asia Network of Exchange for Students and Youth" (JENESYS) program are able to apply. The winner of the Japan Foundation Japanese-Language Institute Director's Award since the FY2004 Long-Term Training Program for Foreign Teachers of the Japanese Language will be exempted from this restriction. Upon submission of the application form, applicants who fall under this category should attach a copy of the notification upon receiving the Director's Award;
- (4) Individuals who have achieved proficiency in the Japanese-language of Level 3 of the Japanese Language Proficiency Test or equivalent (must have completed elementary-level grammar, know 300 kanji, have a vocabulary of 1,500 words, be capable of carrying out everyday conversation, and be able to read and write simple sentences) at the time of application.
Candidates who have never taken the Japanese-Language Proficiency Test, are requested to answer the questions in the Japanese Proficiency Self-Check Test attached to the application form and record test scores in the designated columns in the applicator;
- (5) Individuals under the age of 55 as of December 1, 2009;
- (6) Individuals who have not completed their compulsory education (elementary and junior high school, 9 years) in Japan.
- (7) Nationals of countries that have diplomatic relations with Japan; and
- (8) Individuals who are in good physical and mental health.

Description of the Program (for example)

- (1) Subjects: Participants will be divided into two groups depending on results of a placement examination to be taken upon arrival in Japan. Each group will follow either course A or B. However, circumstances may result in only one course being run.
Course A: Aims to improve the Japanese proficiency of participants enabling them to apply their language skills to various situations and topics.
Course B: Aims to improve the Japanese proficiency of participants so that they are capable of more than daily conversation by acquiring complex linguistic skills (i.e., explanation, description, and argument). In the Japanese-language teaching methods class, the participants will take part in practical activities such as "simulated lessons," through which they will reflect on appropriate

teaching methods.

Number of classes per week:

	Course A	Course B
Japanese-language	16 hours	12 hours
Japanese-language teaching methods	3 hours	7 hours
Japanese culture and society	2 hours	2 hours

(2) Cultural programs: home-stay programs, visits to local schools, demonstrations of calligraphy and other traditional arts, theatre excursions; etc. An optional field trip is planned after the training program.

Number of Participants

Approximately 100 teachers (in total) (106 out of 316 applications for FY 2009)

*In addition to the above programs, the following training programs are provided. These programs are not open to application and all participants are decided by the recommendation of the government, the Japan Foundation office, or the Japanese diplomatic mission in the participants' home countries. Individuals who are interested in these programs should contact the Japan Foundation office in their country.

- The Intensive Training Program for Secondary School Teachers of the Japanese Language from the Republic of Korea
- The Intensive Training Program for University Teachers and Secondary School Teachers of the Japanese Language from the People's Republic of China
- The Intensive Training Program for Secondary School Teachers of the Japanese Language from Indonesia
- The Intensive Training Program for Secondary School Teachers of the Japanese Language from Malaysia

3 Japanese-Language Program for Specialists

App. Form: **KC-G**

Program for Specialists in Cultural and Academic Fields

Section in Charge: Educational Training Section
The Japan Foundation Japanese-Language Institute, Kansai

Specialists (Researchers, Postgraduate Students, Librarians, Museum Curators, etc.) who need a good command of Japanese language for conducting their field-related work and research are invited to apply for the program specifically designed for their needs.

Venue The Japan Foundation Japanese-Language Institute, Kansai
(Tajiri-cho, Sennan-gun, Osaka, Japan)

Grant Coverage

- 1) Expenses necessary for participation in the official curriculum (transportation, textbooks and other materials, etc.)
- 2) Meals during the program period (partly in the form of cash allowance)
- 3) Accommodation (a single room) in the Institute
- 4) Overseas travel insurance for disease and injury for the duration of the program
- 5) Round-trip economy-class airline ticket to and from the airport nearest from home residence, airport tax and foreign travel tax, and a set amount of allowance to cover miscellaneous living expenses (5,000 yen per week) are provided for participants who are nationals of the countries of the following regions:
Asia and Oceania (excluding Korea, Singapore, Brunei, Australia, New Zealand, and Hong Kong residents in China who hold a BNO or Hong Kong SAR passport), Central and South America (excluding Bahamas), Eastern Europe (excluding Estonia, Czech Republic, Hungary, Bulgaria, Belarus, Poland, Latvia, Lithuania, Romania, Slovakia, Slovenia and Russia), Middle East and North Africa (excluding Bahrain, U.A.E., Israel, Qatar, Saudi Arabia and Kuwait), Africa

Applicants This program is an intensive training course of Japanese language for the following applicants.

- 1) Scholars and researchers outside Japan in the fields of social sciences or humanities who need to learn Japanese language for their research activities
- 2) Postgraduate students outside Japan who major in the fields of the social sciences or humanities, wish to be engaged in jobs related to Japanese-studies in future, and need to learn Japanese-language for their academic research activities
- 3) Librarians of higher education/research institutions or public libraries outside Japan who wish to improve their practical Japanese language proficiency to perform their jobs better
- 4) Curators of museums outside Japan currently working for international exchange programs involving Japan who need a good command of Japanese language for specific work-related purposes

Duration

There will be two courses as described below:

- 1) 2-month course: From June 2010 to August 2010
- 2) 6-month course: From June 2010 to December 2010

Eligibility

[2-month course]

Individuals who fulfill all of the following requirements can apply for participation in this program.

- a. Applicants must fulfill at least one of the following requirements and have an employment relationship with the organization they are currently affiliated with. It is expected that participants will continue working in the aforementioned affiliated organization even after returning to their home country (excluding Postgraduate Students).
 - a) Applicants must be carrying out research activities as teachers (such as professors, instructors, or teaching assistants), researchers in institutions of advanced education, such as universities, research centers, or other research organizations outside Japan.
 - b) Applicants must be engaged in a job of specialized research work in public sector organizations, such as government agencies, think tanks, etc. outside Japan.
 - c) Applicants must be officially registered as full-time students in Master's or Doctor's course of a graduate school outside Japan at the time of participation in the program. (This excludes those people who are not working toward a degree as auditors or research students.)

Undergraduate students of universities and colleges that issue Master's degree upon graduation, may be regarded as satisfying this condition if the applicant is 22 years old or more as of December 1, 2009.
 - d) Applicants must be currently employed as full-time librarians by universities, colleges, other institutions of advanced education, academic research institutions, cultural exchange organizations, or public libraries.
 - e) Applicants must be full-time curators of museums outside Japan currently working for international exchange programs that concern Japan.
- b. Applicants applying for this program must obtain the permission of the representative of the applicant's affiliated organization mentioned above.
- c. Applicants must be in the fields of Japan-related social sciences or humanities.
- d. Applicants must have a need for Japanese language proficiency for smoothly carrying out their specialized work and research activities. For postgraduate students, applicants must have plans to write their Master's or Doctor's dissertation on a subject related to Japan and need to learn Japanese language in order to carry out the research necessary to accomplish that purpose.
- e. Applicants must have Japanese language proficiency equal to Level 3 of the Japanese Language Proficiency Test (which requires that he/she has mastered grammar to a limited level, knows around 300 kanji and 1,500 words, has the ability to take part in everyday conversation and read and write simple sentences. This level is normally reached after studying Japanese for around 300 hours and after completion of an elementary course) at the time of application.
- f. Applicants will never have participated in Training Programs for Teachers of Japanese Language organized by the Japan Foundation Japanese-Language Institute, Urawa in the last five years as of December 1, 2009.
- g. Applicants have never participated in the Japanese Language Program for Librarians organized by the Japan Foundation Japanese-Language Institute, Kansai.
- h. Applicants have never participated in the Japanese Language Program for Researchers and Postgraduate Students organized by the Japan Foundation Japanese-Language Institute, Kansai.
- i. Applicants who have never participated in the Japanese-Language Program for Specialists (in Cultural and Academic Fields) organized by the Japan Foundation Japanese-Language Institute, Kansai.
- j. Applicants must be under the age of 40 as of December 1, 2009.
- k. Applicants must be in good physical and mental health.

- l. Applicants have not completed compulsory education in Japan.
- m. Applicants must not be scheduled to come to Japan for study or training under other programs.
- n. Applicants must hold nationality of a country that has diplomatic relations with Japan.

[6-month course]

Individuals who fulfill all the following requirements can apply for participation in this program.

- a. Applicants must fulfill at least one of the following requirements and have an employment relationship with their current affiliated organization. It is expected that applicants will continue working in aforementioned affiliated organization even after returning to their home country (excluding Postgraduate Students).
 - a) They must be carrying out research activities as teachers (such as professors, instructors, or teaching assistants), researchers in institutions of advanced education such as universities and research centers, or other research organizations outside Japan.
 - b) They must be engaged in a job of specialized research work in public sector organizations such as government agencies, think tanks, etc. outside Japan.
 - c) They must be officially registered as full-time students in Master's or Doctor's course of a graduate school outside Japan as of June 2010. (This excludes those people who are not working toward a degree as auditors or research students).
 - d) They must be currently employed as full-time librarians by universities, colleges, other institutions of advanced education, academic research institutions, cultural exchange organizations, or public libraries.
 - e) They must be full-time curators of museums outside Japan currently working for international exchange programs that concern Japan.
- b. Applicants applying for this program must obtain the permission of the representative of the applicant's affiliated organization mentioned above.
- c. Applicants must be in the fields of Japan-related social sciences or humanities (excluding Japanese language study and Japanese-language education).
- d. Applicants must have a need for Japanese language proficiency for smoothly carrying out their specialized work and research activities. For postgraduate students, applicants must have plans to write their Master's or Doctor's dissertation on a subject related to Japan and need to learn Japanese language in order to carry out the research necessary to accomplish that purpose.
- e. Applicants must have a specific and concrete theme related to Japan in their study or work, and a plan to make a presentation on the achievements.
- f. Applicants must have Japanese language proficiency equal to Level 3 of the Japanese Language Proficiency Test (which requires that he/she has mastered grammar to a limited level, knows around 300 kanji and 1,500 words, has the ability to take part in everyday conversation and read and write simple sentences. This level is normally reached after studying Japanese for around 300 hours and after completion of an elementary course) at the time of application.
- g. Applicants will never have participated in Training Programs for Teachers of Japanese Language organized by the Japan Foundation Japanese-Language Institute, Urawa in the last five years as of December 1, 2009.
- h. Applicants have never participated in the Japanese Language Program for Librarians organized by the Japan Foundation Japanese-Language Institute, Kansai.
- i. Applicants have never participated in Japanese Language Program for Researchers and Postgraduate Students organized by the Japan Foundation Japanese-Language Institute, Kansai. (However, in case that the applicants have participated in the 2-month or 4-month program and that it should be more than five years since their completion of the program as of December 1, 2009, the application can be considered to fulfill the above eligibility.)
- j. Applicants who have never participated in the Japanese-Language Program for Specialists (in Cultural and Academic Fields) organized by the Japan Foundation Japanese-Language Institute, Kansai.
- k. Applicants must be under the age of 40 as of December 1, 2009.
 - l. Applicants must be in good physical and mental health.
- m. Applicants have not completed compulsory education in Japan.
- n. Applicants must not be scheduled to come to Japan for study or training under other programs.
- o. Applicants must hold nationality of a country that has diplomatic relation with Japan.

I

II

III

IV

Description of the Program

[2-month course]

Focusing on the proficiency of general Japanese language, the program aims to help improve speaking.

hearing, reading, and writing skills. Optional lessons to meet individual Japanese language needs for specialized work purposes and academic research activities are also offered.

Moreover, the program includes some activities for enhancing participants' understanding of Japanese society, such as social events with the local community, field trips, etc.

This program is primarily a language course for those who need Japanese language proficiency for specialized work and research activities. Education in any particular field of study is not an intended part of the curriculum.

[6-month course]

Focusing on Japanese language proficiency necessary for specialized work or research activities, the program aims to help participants acquire Japanese language skills necessary to collect and present information in their major fields and network with people in their fields.

It also enables participants to carry out various kinds of activities such as visits to other institutions, interviewing professionals, etc. And through these activities they will develop their practical Japanese language skills.

Hence it is essential for participants to have a specific and concrete theme of their work/study/research and to be independent and willing enough to design and plan their major field-related activities to be carried out outside the Institute.

Moreover, the program includes some activities for enhancing participants' understanding of Japanese society, such as social events with the local community, field trips, etc.

Visits to other institutions will also be planned according to the interests of individual participants.

This program is primarily a language course for those who need Japanese language proficiency for specialized work and research activities. Education in any particular field of study is not an intended part of the curriculum.

Number of Participants for FY 2009

Applications: 141/Acceptances: 45

1) 2-month course: approximately 30 participants

2) 6-month course: approximately 15 participants

Policy of Screening

- 1) In the screening process, such factor as applicants' current Japanese language proficiency, Japanese language training needs, achievements and content of their work and research, future possibility of their success, and their aptitude to acquire Japanese language for research and specific work purposes will be all taken into consideration comprehensively.
- 2) In order to develop and encourage Japanese studies and exchanges between Japan and applicants' nations, priority will be given to the following applicants in the screening process.
- 3) In the 2-month course, priority will be given to the following applicants.
 - a. Specialists who have an excellent achievement in their specific fields (especially in social sciences) and are willing to newly expand their study to Japan-related themes, and
 - b. Individuals (not only researchers and postgraduate students but also full-time librarians and full-time curators) who have no experience of studying or living in Japan
- 4) In the 6-month course, priority will be given to the following applicants.
 - a. Specialists who are currently engaged in their profession,
 - b. Postgraduate students who have a specific and concrete theme in their study and plan to take a job related to Japanese studies, and
 - c. Students officially registered in Doctor's course of a graduate school.
- 5) Applications which are related to major cultural exchange events indicated by the Ministry of Foreign Affairs of Japan will be given higher priority.
- 6) In the view of ripple effect, priority will also be given to applicants with affiliations to major institutions of advanced education, research organizations or public sector organizations etc.

Application Deadline December 1, 2009

Notification of Results April, 2010

1 Japanese Studies Overseas

Application code: **RJS-FW****Japan Foundation Japanese Studies Fellowship Program**

Section in Charge: The appropriate section in Japanese Studies and Intellectual Exchange Department

For the purpose of promoting Japanese studies overseas, this program provides support to preeminent foreign scholars in Japanese Studies to give an opportunity to conduct research in Japan. However, experts in the fields of natural science, medical science, and engineering are excluded.

There are three subcategories as shown below.

〈Scholars and Researchers〉

〈Long-Term〉

Applicants Scholars and researchers who are conducting research related to Japan (comparative research included) with methods in the humanities and social sciences.

Duration 2 to 12 months

〈Short-Term〉

Applicants Scholars and researchers who are conducting research related to Japan (comparative research included) with methods in the humanities and social sciences, whose projects require them to travel to Japan to carry out research, gather materials, etc. intensively over a short period of time.

Duration 21 to 59 days

〈Doctoral Candidates〉

Applicants Ph.D. candidates, who are conducting research related to Japan (comparative research included) with methods in the humanities and social sciences, who, in principle, have completed (or will have completed by the beginning of the Fellowship) the necessary course work, and find it necessary to visit Japan to complete their dissertations.

Duration 4 to 14 months

Eligibility of Applicants (common to all subcategories):

- 1) Applicant must be a national/permanent resident of a country that has diplomatic relations with Japan.
- 2) Previous recipients of the Japan Foundation fellowships, such as the Japanese Studies Fellowships, Abe Fellowships, or Japanese-Language Education Fellowships, etc., are eligible to reapply only if, on April 1, 2010, a full three years have elapsed since the termination of their most recent fellowships. However, previous Scholars and Researchers (Short-Term) Fellows (former name: Short-Term Researchers Fellows) are eligible to reapply only if, on April 1, 2010, one full year has elapsed since the termination of their most recent fellowships.
- 3) Applicants who have been in Japan continuously for more than a year dating back from April 1, 2010 are excluded.
- 4) Applicants must have advanced proficiency in either Japanese or English to research and communicate.
- 5) At the time of submitting application, both host organization (for acceptance) and an advisor (to provide guidance) must be secured (except for Scholars and Researchers (Short-Term)).
- 6) Undergraduate students, students undertaking a Master's course, basic training in Japanese language and technical skills, as well as training in the fields of art and traditional culture (e.g. tea ceremony, flower arrangement, etc.) are excluded.
- 7) Program duration: shorter or longer periods than shown above are not allowed.

Benefits Round-trip discount economy-class airfare (most direct and economical ticket purchased by the fellow will be

reimbursed upon arrival.)
Maintenance Allowance and other allowances
Insurance

Number of Fellowships for Fiscal 2009-2010

153 out of 336 Applications

Screening Guidelines (common to all subcategories)

- 1) Applicants who have received Japan Foundation fellowships in the past on two or more occasions will be given lower priority.
- 2) While aiming to select experts from a wide variety of fields, preeminent researchers, as well as relatively young researchers (or experienced researchers in the case of Scholars and Researchers (Short-Term)) are given priority.
- 3) When selecting researchers, efforts are made to maintain a balance based on region, country, and host organization.

Application Deadline December 1, 2009

(Applicants who hold U.S. citizenship or permanent residency: November 2, 2009)

Notification of Result Late April, 2010

2 Intellectual Exchange

App. Form: **RIE-RC**

Grant Program for Intellectual Exchange Conferences

Section in Charge: The appropriate Section in Japanese Studies and Intellectual Exchange Department

Purpose of Program

The purpose of this program is to deepen mutual understanding and to establish closer relations between Japan and other countries while promoting intellectual exchange worldwide.

Contents of Program

This program provides grants to partially cover the expenses of implementing such projects as international conferences, symposia, seminars, workshops etc., to contribute to intellectual collaboration worldwide. Projects initiated by citizen/youth, which promote mutual understanding between Japan and abroad through dialogues on common concerns or issues (handled by the "Grant Program for Cultural Exchange at the Grass-roots Level" until 2009) will be reviewed under this Program from fiscal 2010 as a "Grant for Human Resources Development for carrying International Exchange".

Eligibility

Non-profit organizations (e.g. universities, research institutes, NGO/NPO) are eligible to apply. Only Non-profit organizations in Japan can apply for "Grant for Human Resources Development for carrying International Exchange" Applications from individuals will not be accepted.

■Intellectual Exchange Conferences

Eligibility of Projects

The global financial crisis not only spoiled public trust toward international monetary system, but also threw into question such fundamental values that had sustained the modernity as national growth, social progress, and personal prosperity. Collective quests for a new set of societal values are already evident in those general trends that yearn for work-life balance, eco-friendly lifestyle, or for socially responsible corporations.

With this as a background, this year's grant program has the following non-exclusive priority areas, all of which strive to understand the relationship between emerging social phenomenon and collective values and culture that are being altered or newly formed:

- i) Diversified society and public tolerance
- ii) Peace-building and culture

- iii) Environment and culture
- iv) Social values of science and technology
- v) International governance and economic prosperity

In addition, a special attention will also be given to those attempts to broaden and/or enrich the areas of Japanese studies through comparative and interdisciplinary approaches.

Duration Projects should be implemented and completed between April 1, 2010 and March 31, 2011.

Grant Coverage

- 1. Traveling expenses (international airfares, domestic transportation, board, lodging and per-diem allowance)
- 2. Honoraria (for paper presenters, lecturers, interpreters and assistants)
- 3. Other expenses (conference materials, publication of reports, venue and equipment rental, and public relations)

Number of Grants for Fiscal 2008-2009

61 out of 178 Applications

Screening Guideline

In the process of considering applications, projects that aim to disseminate outcomes effectively and widely to the public and projects where Japan's own experience, expertise and human resources are expected to be fully capitalized are evaluated highly. As a general rule, higher priority is given to applications which fulfill the following points. However, applications may be awarded grants even if they fulfill only some (but not all) these points, depending on the quality of the application itself.

- 1) Multilateral projects: Projects that include participants from various countries, i.e. are not limited to bilateral exchange
- 2) Multi-sectoral projects: Projects that aim to include participants from a variety of social sectors such as academics, policy-makers, community or non-governmental organizations.
- 3) Interdisciplinary projects: Projects that aim to bridge disciplinary boundaries and thereby contribute to the expansion and development of an extensive intellectual network. In particular, projects which include participants of the next generation.

Application Deadline December 1, 2009

Notification of Result Late April, 2010

■Grant for Human Resources Development

Eligibility of Projects

Projects initiated by citizen/youth, which promote mutual understanding between Japan and abroad through dialogues on common concerns or issue, and contribute to human resources development for intellectual exchange in the future. This grant can only be applied for by Non-profit organizations in Japan.

Duration, Application Deadline and Notification of Result

1st deadline: December 1, 2009

Notification of Result: Early April, 2010

Duration: Projects should be implemented and completed between April 1, 2010 and March 31, 2011.

2nd deadline: May 6, 2010

Notification of Result: Early July, 2010

Duration: Projects should be implemented and completed between August 1, 2010 and March 31, 2011.

Grant Coverage

Traveling expenses (international airfares/boat fares, domestic transportation, board, lodging and per-diem allowance)

Screening Guideline

When reviewing applications, higher priority is given to applications which satisfy the following conditions:

- (1) Project theme is clearly identified with an appropriate selection of participants.



- (2) Projects that are collaboratively planned and carried out by an applicant and (a) counterpart(s) organization abroad. Projects should benefit both sides.
- (3) Projects that contribute to develop human resources that solve common and social issues in various areas.

3. The Japan Foundation Center for Global Partnership

MISSION

To promote collaboration between Japan and the United States with the goal of fulfilling shared global responsibilities and contributing to improvements in the world's welfare.

To enhance dialogue and interchange between Japanese and US citizens on a wide range of issues, thereby improving bilateral relations.

OVERVIEW

The Center for Global Partnership (CGP) was established within the Japan Foundation in April 1991 with offices in both Tokyo and New York.

To carry out its mission, CGP operates grant programs as well as self-initiated projects and fellowships.

We support an array of institutions and individuals, including nonprofit organizations, universities, policymakers, scholars and educators, and believe in the power of broad-based, multi-channel approaches to effect positive change.

Further details can be obtained from either the Japan Foundation Center for Global Partnership's Tokyo or New York office.

English website

Tokyo Office: <http://jpf.go.jp/cgp/e/index.html>

New York Office: <http://www.cgp.org>

3-(1) Grant Program

The CGP's grant program emphasizes on academic/intellectual excellence and national and international public consequence. Grants support policy-oriented projects conducted by an array of U.S. and Japanese institutions including non-profit organizations, universities, and think tanks as well as policymakers, scholars, and educators. Programs are aimed to create new networks and provide opportunities for advancing research and fostering candid discussion of issues.

Eligibility Proposals are accepted from nonprofit organizations (NPOs) in either the United States or Japan. U.S. organizations must have 501(c)(3) status.

Eligible Projects

〈Target Areas〉

Area I: Traditional and Non-traditional Approaches to Security and Diplomacy

Issues include transnational terrorism, internal ethnic and religious conflict, infectious diseases, environmental degradation, and climate change. In the non-traditional approach, research and dialogue projects that focus on the role of culture in peace-building will be particularly welcomed.

Examples of project themes

1. Analyzing and assessing the emerging security order of Northeast Asia and Asia as a whole;
2. Addressing and overcoming transnational terrorism and a variety of proliferation issues;
3. Operationalizing "human security";
4. Promoting international collaboration on climate change issues;
5. Exploring public diplomacy issues.

Area II: Global and Regional Economic Issues

Issues include regional and bilateral trade arrangements, globalization and the mitigation of its adverse

consequences with the active participation of the business sector, and sustainable urbanization.

Examples of project themes

1. Exploring future trends in multilateralism, regionalism, and bilateralism and the implications for the global economic environment;
2. Discussing the roles and responsibilities of the business sector and its contributions to the overall well-being of societies;
3. Examining issues of urban revitalization and sustainability including the injection of creativity through art and culture.

Area III: Role of Civil Society

Projects in the following two areas are eligible:

1. International comparisons of the role and influence civil society actors have in policy arenas. For example, in light of rapidly changing demographics, what is the role of civil society with regard to immigration and achieving balance in increasingly diverse societies;
2. Creative dialogue and networking among actors in the business sector, cultural institutions, and civil society.

Screening Criteria

<Project requirements and priorities>

Projects are required to have the following elements:

- Japan-based collaborative partner;
- Current topics that are policy-relevant to both the United States and Japan;
- Clear and concrete designs that articulate the ideas, participants and goals of the project;
- Ideas or participants that comprise a breadth of viewpoints;
- Event, such as a symposium, conference or workshop-- a minimum of one;
- Dissemination plans, such as a publication or academic paper;
- A minimum of twenty percent (20%) of the total project budget must be secured from non-CGP sources such as the applying institution or other foundations.

Priority is given to projects with:

- Results that are shared and widely disseminated, and that contribute effectively to the existing body of knowledge and/or shape policy;
- Long-term commitment to the issues;
- Innovative concepts or approaches to engaging the project topic;
- Participants that reflect diversity in ethnicity, gender, and geography;

Grant Coverage

Salary and honoraria, travel costs (domestic and international transportation, hotels, meals, etc.), publication (printing, bookbinding, translation, etc.), conference costs (room hire, interpretation fee, etc.).

Number of Grants for FY 2008 18

Application Deadline and Notification of Results

Deadline: December 1, 2009 (for projects beginning between April 2010 and March 2011);

Notification of Results: April 2010

CGP requests concept papers of two to three pages from prospective applicants at least two months prior to the submission deadline.

3-(2) Abe Fellowship

The Abe Fellowship is designed to encourage international multidisciplinary research on topics of pressing global concern. The program seeks to foster the development of a new generation of Japanese and American researchers and journalists who are interested in policy-relevant topics of long-range importance and who are willing to become key members of a bilateral and global research network built around such topics. The



Abe Fellowship Program is composed of "Abe Fellowship" and "Abe Fellowship for Journalists".

Target Area (both "Abe Fellowship" and "Abe Fellowship for Journalists")

Applicants are invited to submit proposals for research in the social sciences or related disciplines relevant to any one or combination of the following three themes:

- 1) Traditional and non-traditional approaches to security and diplomacy;
- 2) Global and regional economic issues; and
- 3) The role of civil society.

Research must show the following three qualities

- 1) policy-relevance;
- 2) contemporary focus; and
- 3) comparative or transnational perspectives.

〈Abe Fellowship〉

Eligibility

- The Fellowship is open to citizens of the U.S. and Japan as well as nationals of other countries who can demonstrate strong and committed long-term affiliations with research communities in Japan or the U.S.
- Applicants must hold a Ph.D. or the terminal degree in their field, or have attained an equivalent level of professional experience.

Duration

3 to 12 months

〈Abe Fellowship for Journalists〉

Eligibility

- The AFJ Fellowship is open to citizens of the U.S. and Japan with at least five years of professional journalistic experience in newspapers, newsmagazines, wire services, and on-line news organizations. Freelancers are also eligible. Nationals of other countries must be permanent residents of the U.S. or Japan, or have a long-term affiliation with the American or Japanese journalistic communities.
- Proposals must be non-partisan.

Duration

6 weeks

*Please consult with the Social Science Research Council (SSRC) or check the program website for more information on eligibility and fellowship conditions.

Application

Applications must be submitted via the Social Science Research Council (SSRC) online application system. Details can be found at the following addresses:

〈Abe Fellowship〉 <http://www.ssrc.org/fellowships/abe-fellowship/>

〈Abe Fellowship for Journalists〉 <http://www.ssrc.org/fellowships/abe-fellowship-for-journalists/>

Deadline

〈Abe Fellowship〉 September 1, 2009

〈Abe Fellowship for Journalists〉 September 15, 2009

Number of fellows accepted (Fiscal 2008-2009)

13 Abe Fellows, 4 Journalist Fellows

For further details and application material, please contact the Program Secretariat:

Abe Fellowship Program
Social Science Research Council (SSRC)
One Pierrepoint Plaza, 15th Floor
Brooklyn, N.Y. 11201, U.S.A.
TEL: 212-377-2700
FAX: 212-377-2727
E-MAIL: abe@ssrc.org

or

Abe Fellowship Program Tokyo Office
c/o Japan Foundation Center for Global Partnership
4-4-1 Yotsuya, Shinjuku-ku

Tokyo, 160-0004 Japan
TEL: 03-5369-6085
FAX: 03-5369-6042
E-MAIL: ssrcABE@gol.com

*Individuals who wish to conduct research in Japan should also refer to The Japan Foundation Japanese Studies Fellowship Program.

3-(3) Japan Outreach Initiative (JOI)

This program aims to promote understanding and awareness of Japan in regions of the United States with relatively few Japan-related activities and opportunities for exchange and to nurture new leaders in the field of grass-roots exchange. Japanese individuals, placed mainly in the southern and midwestern U.S., volunteer as outreach coordinators at organizations with outreach programs such as Japan-America societies and universities. Coordinators provide information about Japanese culture, society, everyday life, and language in local community settings and organize activities that foster exchange between the United States and Japan.

Example of Activities

- (1) Give presentations on Japanese culture and society to schools, colleges, and the community.
- (2) Organize or coordinate a Japan Festival based on a Japanese holiday, event, or custom.
- (3) Organize or coordinate lectures or discussion programs on traditional and current Japanese culture and society.
- (4) Facilitate and develop exchange activities between the local community and Japan.

Duration Two years

Assistance A \$750 monthly stipend, round-trip air tickets, and housing, etc. are provided.

Application Deadline January 7, 2010

Administration The program is administered jointly by the CGP and The Lurasian Institution. For further details and application materials, please contact:

The Lurasian Institution (Tokyo Office)
5-5-17 Shimomeguro, Meguro-ku, Tokyo 153-0064 Japan
TEL: 03-3712-6176 FAX: 03-3712-8975
URL: <http://www.lurasian.org/joi>
E-mail: joi@lurasian.org

I

II

III

IV

(1) Authorizing the Use of the Name "The Japan Foundation" as a Supporter

Section in Charge: The section most closely related to the proposed project
(General inquiries: Japan Foundation Information Center)

The Japan Foundation supports cultural projects that contribute to the promotion of international exchange by granting the use of its name as a supporter. Applications, made by a standard format, should be received at least four weeks prior to the beginning date of the project.

(2) Designated Donations Program

Division in Charge: Budget and Finance Division

When Japanese corporations and individuals intend to support an international cultural-exchange project carried out by domestic or foreign public groups, this program allows the Japan Foundation to once receive their monetary and/or in-kind contributions as donations to be allocated for the specific project and then to make a grant to the designated project based on the donated resources.

By utilizing this program, supporting corporations and individuals can enjoy a tax benefit that is approved in the case of donations to the Japan Foundation because the Foundation is a "Designated Public Benefit Organization", or Tokutei Koh-eki Zoshin Hojin in Japanese tax laws.

Note

- 1) To apply this program, applicants, projects and grantees need to fulfill prescribed requirements. For details of this program including these requirements, please refer to "Designated Donation Program Guidelines". The contents of "Designated Donation Program Guidelines" are available on our website (<http://www.jpf.go.jp/e/about/donation/index.html>), or the Budget and Finance Division can send details by post on request.
- 2) After reading through the "Designated Donation Program Guidelines" and when preparing for application to this program, please contact the Budget and Finance Division directly to confirm their eligibility, requirements, etc., before submitting a draft application.
- 3) Decisions on the acceptability of donations shall be decided after referring to the Screening Committee (consisting of outside specialists) meeting.
- 4) The Japan Foundation does not intermediate or canvass organizations to solicit donations to any specific project.

Deadlines of Draft Application, Application Form and timing of notices of results

[2nd screening round of fiscal 2009]

Deadline of Draft Application: September 1, 2009

Deadline of Application form: October 1, 2009

Timing of notices of results: At the end of November 2009

[3rd screening round of fiscal 2009]

Deadline of Draft Application: January 5, 2010

Deadline of Application form: February 2, 2010

Timing of notices of results: At the end of March 2010

[1st screening round of fiscal 2010]

Deadline of Draft Application: May 1, 2010

Deadline of Application form: June 1, 2010

Timing of notices of results: At the end of July 2010

※For detailed information about the application deadlines after second screening round of fiscal 2010, please contact the Budget and Finance Division.

※Draft application must be submitted one month prior to the Application Deadlines

The Japan Foundation Offices

(As of August 2009)

Domestic Offices

The Japan foundation Headquarters 4-4-1 Yotsuya, Shinjuku-ku Tokyo 160-0004, Japan <http://www.jpf.go.jp/e>

General Affairs Dept.	Fax:(03)5369-6031	China Center	Fax:(03)5369-6043
■ General Affairs Div.	Tel:(03)5369-6051		Tel:(03)5369-6074
Information Systems Office	Tel:(03)5369-6080		
Information Disclosure Office	Tel:(03)5369-6081	(Japanese-Language)	
Research Office	Tel:(03)5369-6082	Teacher and Institutional Support Dept.	Fax:(03)5369-6040
■ Personnel Div.	Tel:(03)5369-6052	■ Planning and Coordination Section	Tel:(03)5369-6066
■ Planning and Evaluation Div	Tel:(03)5369-6053	■ Sakura Network Section	Tel:(03)5369-6067
■ Office for Project Development and Corporate	Tel:(03)5369-6061		
		Japanese Studies and Intellectual Exchange Dept.	Fax:(03)5369-6041
Financial and Accounting Dept.	Fax:(03)5369-6034	■ General Coordination and the Americas Section.	Tel:(03)5369-6069
■ Budget and Finance Div.	Tel:(03)5369-6054	■ Asia and Oceania Section	Tel:(03)5369-6070
Budgetary Control Office	Tel:(03)5369-6055	■ Europe, Middle East and Africa Section	Tel:(03)5369-6071
■ Accounting Div.	Tel:(03)5369-6056		
		Center for Global Partnership	Fax:(03)5369-6042
Overseas Policy Planning Dept.	Fax:(03)5369-6035		Tel:(03)5369-6072
■ Overseas Liaison Div.	Tel:(03)5369-6057		
Office for the Japanese Cultural Institute in Paris	Tel:(03)5369-6084	Information Center (JFIC)	Fax:(03)5369-6044
■ Overseas Program Coordination Div.	Tel:(03)5369-6058		Tel:(03)5369-6075
Arts and Culture Dept.	Fax:(03)5369-6038	JFIC Library	Fax:(03)5369-6048
■ (Culture and Society Section)	Fax:(03)5369-6036		Tel:(03)5369-6086
■ Planning and Coordination Section	Tel:(03)5369-6078		
■ Culture and Society Section	Tel:(03)5369-6060	JF Supporters Club	Tel:(03)5369-6087
■ Visual Arts Section	Tel:(03)5369-6062		
■ Performing Arts Section	Tel:(03)5369-6063	Audit Bureau	Fax:(03)5369-6045
■ Film, TV and Publication Section	Tel:(03)5369-6064		Tel:(03)5369-6076
■ International Triennale Section	Tel:(03)5369-6065		
■ Pop Culture Section	Tel:(03)5369-6079		

The Japan Foundation Center for Japanese-Language Testing

1-21 Yotsuya, Shinjuku-ku, Tokyo 160-0004, Japan Tel:(03)5367-1021 Fax:(03)5367-1025
(Japanese-Language) Learners' Support Dept. Japanese-Language Testing Section

The Japan Foundation Japanese-Language Institute, Urawa

5-6-36 Kita Urawa, Urawa-ku Saitama city, Saitama 330-0074, Japan Tel:(048)834-1180 Fax:(048)834-1170
<http://www.jpf.go.jp/e/urawa>

(Japanese-Language) Teacher and Institutional Support Dept. Teachers Training Section Tel:(048)834-1181/2

(Japanese-Language) Learners' Support Dept. Research and Development Section Tel:(048)834-1183 Fax:(048)831-7846

The Japan Foundation Japanese-Language Institute, Kansai

3-14 Rinku Port Kita, Tajiri-cho, Sennan-gun, Osaka 598-0093, Japan Tel:(072)490-2600 Fax:(072)490-2801
<http://www.jpf.go.jp/j/kansai>

(Japanese-Language) Learners' Support Dept. Educational Training Section Tel:(072)-490-2601/2

Kyoto Office

3rd Floor, Kyoto International Community House 2-1 Torii-cho, Awataguchi, Sakyo-ku Kyoto, 606-8436 JAPAN
Tel:(075)762-1136 Fax:(075)762-1137

The Japan Foundation Overseas Offices

Australia	The Japan Foundation, Sydney Level 1, Chifley Plaza, 2 Chifley Square, Sydney N.S.W. 2000, Australia http://www.jpff.org.au/	(TEL) 61-2-8239-0055 (FAX) 61-2-9222-2168
Brazil	Fundação Japão, Assessoria Cultural do Consulado Geral do Japão (The Japan Foundation, São Paulo) Avenida Paulista 37, 2º andar CEP 01311-902, São Paulo, SP, Brasil http://www.fjfsp.org.br/ E-mail: jpn@fjfsp.org.br	(TEL) 55-11-3141-0843 -0110 (FAX) 55-11-3266-3562
Canada	The Japan Foundation, Toronto 131 Bloor Street West, Suite 213 Toronto, Ontario, M5S 1R1, Canada http://www.jftor.org/ E-mail: info@jftor.org	(TEL) 1-416-966-1600 (FAX) 1-416-966-9773
China	The Japan Foundation, Beijing 日本国際交流基金会北京日本文化中心 #301, 3F SK Tower Beijing, No. 6 Jia Jianguomenwai Avenue, Chaoyang District, Beijing, 100022 China 北京市朝陽区建国門外大街甲 6 号SK大厦 3 階301 100022 http://www.jpfbj.cn/ E-mail: jpfbj@jpfbj.cn	(TEL) 86-10-8567-9511 (FAX) 86-10-8567-9075
Egypt	The Japan Foundation, Cairo Cairo Center Building, 5F, 2 Abdel Kader Hamza Street, Garden City, Cairo, Arab Republic of Egypt http://www.jfcairo.org/ E-mail: info@jfcairo.org	(TEL) 20-2-2794-9431 2794-9719 (FAX) 20-2-2794-9085
France	Fondation du Japon/Maison de la culture du Japon à Paris (The Japan Cultural Institute in Paris (The Japan Foundation)) 101 bis, quai Branly 75740 Paris Cedex 15, France http://www.mcjp.asso.fr/ E-mail: mcjp@jpf.go.jp	(TEL) 33-1-44-37-95-00 (FAX) 33-1-44-37-95-15
Germany	Japanisches Kulturinstitut (The Japan Cultural Institute in Cologne (The Japan Foundation)) Universitätsstrasse 98, 50674 Köln, Germany http://www.jki.de/ E-mail: jfco@jki.de	(TEL) 49-221-9405580 (FAX) 49-221-9405589
Hungary	The Japan Foundation, Budapest 1062 Budapest, Aradi u. 8-10. Oktogon Ház 2F Hungary http://www.jfbp.org.hu/ E-mail: info@jfbp.org.hu	(TEL) 36-1-214-0775 -0776 (FAX) 36-1-214-0778
India	The Japan Foundation, New Delhi 5-A, Ring Road Lajpat Nagar-IV, New Delhi, 110024, India http://www.jfindia.org.in/ E-mail: query@jfindia.org.in	(TEL) 91-11-2644-2967 -2968 (FAX) 91-11-2644-2969

Indonesia	The Japan Foundation, Jakarta Summitmas I, 2-3F Jalan Jenderal Sudirman, Kav. 61-62 Jakarta Selatan 12190, Indonesia http://www.jpfor.id/	(TEL) 62-21-520-1266 (FAX) 62-21-525-1750
Italy	Istituto Giapponese di Cultura (The Japan Cultural Institute in Rome (The Japan Foundation)) Via Antonio Gramsci 74 00197 Roma, Italy http://www.jfroma.it/ Email: sovvenzione@jfroma.it	(TEL) 39-06-322-4754 -4794 (FAX) 39-06-322-2165
Korea	The Japan Foundation, Seoul Heungkuk Life Insurance Bldg. 3F, 226, Sinmunno 1-ga, Jongno-gu, Seoul 110-061, Korea http://www.jpfor.kr E-mail: apply@jpfor.kr Since the mid of November, address will change as follows (No change in E-mail, TEL, FAX) Vertigo Bldg. 3F Yonseiro 10-1, Seodaemon-gu, Seoul 120-833, Korea	(TEL) 82-2-397-2820 (FAX) 82-2-397-2830
Malaysia	The Japan Foundation, Kuala Lumpur 18th Floor, Northpoint Block B, Mid-Valley City, Medan Syed Putra, 59200, Kuala Lumpur, Malaysia http://jfk.org.my E-mail: jpcc@jfk.org.my	(TEL) 60-3-2284-6228 (FAX) 60-3-2287-5859
Mexico	Fundación Japón en México (The Japan Foundation, Mexico) Av. Ejército Nacional No. 418, 2do Piso, Col. Chapultepec Morales, C.P. 11570, México, D.F., México http://www.fjmex.org/ E-mail: fundacionjapon@fjmex.org	(TEL) 52-55-5254-8506 (FAX) 52-55-5254-8521
The Philippines	The Japan Foundation, Manila 12th Floor, Pacific Star Bldg., Sen. Gil J. Puyat Ave. Ext., cor. Makati Ave., Makati, Metro Manila, 1226, The Philippines http://www.jfmo.org.ph/ E-mail: email@jfmo.org.ph	(TEL) 63-2-811-6155~6158 (FAX) 63-2-811-6153
Russia	Отдел японской культуры «Japan Foundation» в ВГБИЛ The Japanese Culture Department "Japan Foundation" of the All-Russia State Library for Foreign Literature 4 th Floor, Nikoloyamskaya Street, 1, Moscow, Russian Federation, 109189 http://www.jpfmw.ru E-mail: info@jpfmw.org	(TEL)7-495-626-5583/85 (FAX)7-495-626-5568
Thailand	The Japan Foundation, Bangkok Serm-Mit Tower, 10F 159 Sukhumvit 21 (Asoke Road), Bangkok 10110, Thailand http://www.jfbkk.or.th/	(TEL) 66-2-260-8560~8564 (FAX) 66-2-260-8565
U.K.	The Japan Foundation, London Russell Square House, 10-12 Russell Square, London WC1B 5EH, United Kingdom http://www.jpfor.org.uk/ E-mail: info@jpf.org.uk	(TEL) 44-20-7436-6695 (FAX) 44-20-7323-4888

U.S.A.	<p>The Japan Foundation, New York 152 West 57th Street, 17F New York, NY 10019, U.S.A. http://www.jfny.org/ info@jfny.org</p>	<p>(TEL) 1-212-489-0299 (FAX) 1-212-489-0409</p>
U.S.A.	<p>The Japan Foundation Center for Global Partnership NY 152 West 57th Street, 17F New York, NY 10019, U.S.A. http://www.cgp.org/ info@cgp.org</p>	<p>(TEL) 1-212-489-1255 (FAX) 1-212-489-1344</p>
U.S.A.	<p>The Japan Foundation, Los Angeles 333 South Grand Avenue, Suite 2250, Los Angeles, CA 90071, U.S.A. http://www.jflalc.org/ E-mail: culture@jflalc.org</p>	<p>(TEL) 1-213-621-2267 (FAX) 1-213-621-2590</p>
Viet Nam	<p>The Japan Foundation Center for Cultural Exchange in Viet Nam No. 27 Quang Trung Street, Hoan Kiem District, Hanoi, Viet Nam http://www.jpfor.org.vn</p>	<p>(TEL) 84-4-3944-7419 (FAX) 84-4-3944-7418</p>

THE JAPAN FOUNDATION

Program Guidelines

Fiscal 2010-2011

Published by The Japan Foundation

Edited by

Planning and Evaluation Div., General Affairs Dept.

The Japan Foundation

4-4-1 Yotsuya, Shinjuku-ku, Tokyo 160-0004, Japan

Tel: 03-5369-6053



国際交流基金

