



JAPAN FOUNDATION

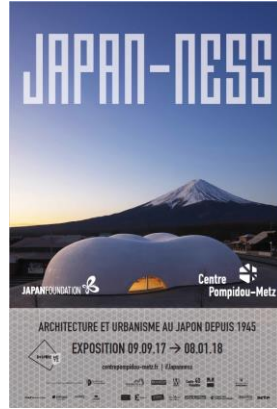
国際交流基金

PRESS RELEASE

August 24, 2017
No. 2017-024-1/4

Two Major Exhibitions at Centre Pompidou-Metz, France Japanese Architecture and Art Exhibitions Open in Autumn 2017

The Japan Foundation and Centre Pompidou-Metz will present two large-scale exhibitions of Japanese architecture and Japanese contemporary art at the Centre in Metz, France, opening in autumn 2017.



(left) Centre Pompidou-Metz

©Shigeru Ban Architects Europe et Jean de Gastines Architectes, avec Philip Gumuchdjian pour la conception du projet laureat du concours / Metz Metropole / Centre Pompidou-Metz / Photos Philippe Gisselbrecht

(centre) *Japan-ness* poster

Takeshi Hosaka, Hoto Fudo, Yamanashi, Japon © Nacasa&Partners Inc. / Koji Fujii © TAKESHI HOSAKA ARCHITECTS / Graphisme L&D, Kanta Desroches

(right) *Japanorama* poster

Kenji Yanobe, *Atom Suit Project – Desert C-prints*, 49,8 x 49,8 cm Collection particulière © Kenji Yanobe / Graphisme L&D, Kanta Desroches

The architecture exhibition, *Japan-ness—Architecture and urbanism in Japan since 1945*, opens in September, featuring over 300 projects by 118 architects, artists and groups. It is the first major exhibition in Europe to attempt a summary of Japanese architecture from the postwar period to the present day. Drawing mainly from collections in Japan and France, it brings together some 65 precious original models and over 150 drawings and sketches, together with films, photographs, and printed materials. The exhibition is presented in six sections that trace the history of this period, exhibiting the works of Japanese architects.

The art exhibition, *Japanorama—New vision on art since 1970*, opens in October, aims to give an overview of Japanese contemporary art and visual culture since Expo'70, the Japan World Exposition Osaka 1970. Curated by Yuko Hasegawa, Artistic Director at the Museum of Contemporary Art Tokyo, this is a major exhibition that presents over 350 works by some 100 artists and groups.

In 1986, an iconic exhibition, *Avant-Garde Arts of Japan 1910-1970* at the Centre Pompidou in Paris secured a place in art history as a monumental exhibition of Japanese modern and contemporary art outside Japan. After 30 years since the exhibition, Centre Pompidou-Metz organizes *Japanese Season* from September 2017 to May 2018 to introduce Japanese art and culture including these two exhibitions, performing arts and other events. This is the first time that the Centre has devoted its entire season to focus on a single country.

The two exhibitions function as preludes for the *Japonismes 2018* program, raising French interest in Japanese society and culture. This large-scale event will showcase Japanese culture in Paris and other places in 2018, the year which marks the 160th anniversary of Japan-France diplomatic relations. The Japan Foundation acts as the secretariat for *Japonismes 2018*.

●**Organizer / General inquiries:** The Japan Foundation Arts and Culture Dept.

Japan-ness: Suzuki (Ms.), Nagata (Ms.) / Japanorama: Namba(Ms.), Tokuyama(Ms.)

Tel: +81-(0)3-5369-6063 / Fax: +81-(0)3-5369-6038 / E-mail: metz@jpf.go.jp

●**Press inquiries:** The Japan Foundation Communication Center Nimura (Mr.), Kumakura (Ms.)

Tel: +81-(0)3-5369-6075 / Fax: +81-(0)3-5369-6044 / E-mail: press@jpf.go.jp

■Centre Pompidou-Metz

Centre Pompidou-Metz opened in the Lorraine region of France in 2010 as a sister institution to Centre Pompidou (Paris). The Center was designed by Japanese architect Shigeru Ban, winner of the 2014 Pritzker Architecture Prize, and French architect Jean de Gastines.

■Japanese architecture exhibition

[Title]	<i>Japan-ness—Architecture and urbanism in Japan since 1945</i>
[Dates]	Saturday, September 9, 2017 – Monday January 8, 2018
[Opening Hours]	Until October 31: Monday/Wednesday/Thursday: 10:00 – 18:00; Friday – Sunday: 10:00 – 19:00; Tuesday: Closed From November 1: Wednesday – Monday: 10:00 – 18:00; Tuesday: Closed
[Venue]	Centre Pompidou-Metz (Metz, France)
[Organizers]	The Japan Foundation, Centre Pompidou-Metz
[With special support from]	Ishibashi Foundation
[Sponsor]	ANA (All Nippon Airways)
[Curator]	Frédéric Migayrou (Assistant Director of Centre Pompidou – National Museum of Modern Art, Paris and Head Curator of the Architecture Department; Chair and Bartlett Professor of Architecture of the Bartlett School of Architecture, University College London; Honorary Fellow of the RIBA; and a Commandeur de l'Ordre des Arts et Lettres of the French Republic)
[Associate Curator]	Yuki Yoshikawa (Centre Pompidou-Metz, Curatorial research fellow)
[Exhibition Design]	Sou Fujimoto Architects
[Architects & Artists]	118 architects/artists (to be finalized) including: AIDA Takefumi, AZUMA Takamitsu, ISHIMOTO Yasuhiro, ISOZAKI Arata, ICHIKAWA Sota/doubleNegatives Architecture, ITO Toyo, OHE Hiroshi, OTAKA Masato, OTANI Sachio, KIKUTAKE Kiyonori, KITAGAWARA Atsushi, KUROKAWA Kisho, SAKAKURA Junzo, SHIRAI Seiichi, SUZUKI Makoto, TANGE Kenzo, NIKKEN SEKKEI LTD, HATAKEYAMA Naoya, HAYAKAWA Kunihiko, HAYASHI (YAMADA) Masako, HARA Hiroshi, MAYEKAWA Kunio, MAKI Fumihiko, MASUZAWA Makoto, MURANO Togo, MOZUNA Kiko, YAMAMOTO Riken, YOSHIZAKA Takamasa, RAYMOND Antonin, ROKKAKU Kijo, WATANABE Yoji, WATANABE Yoshio
[Website]	http://www.centrepompidou-metz.fr/en/japan-ness-architecture-and-urbanism-japan-1945

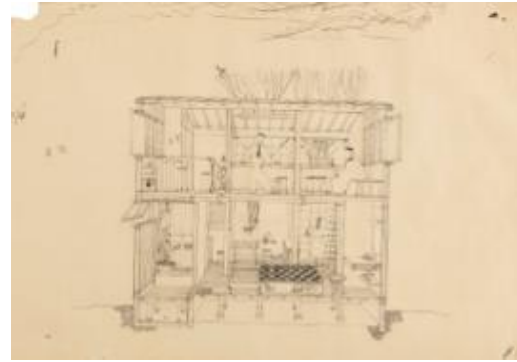
●**Organizer / General inquiries:** The Japan Foundation Arts and Culture Dept.
Japan-ness: Suzuki (Ms.), Nagata (Ms.) / Japanorama: Namba(Ms.), Tokuyama(Ms.)
Tel: +81-(0)3-5369-6063 / Fax: +81-(0)3-5369-6038 / E-mail: metz@jpf.go.jp

●**Press inquiries:** The Japan Foundation Communication Center Nimura (Mr.), Kumakura (Ms.)
Tel: +81-(0)3-5369-6075 / Fax: +81-(0)3-5369-6044 / E-mail: press@jpf.go.jp

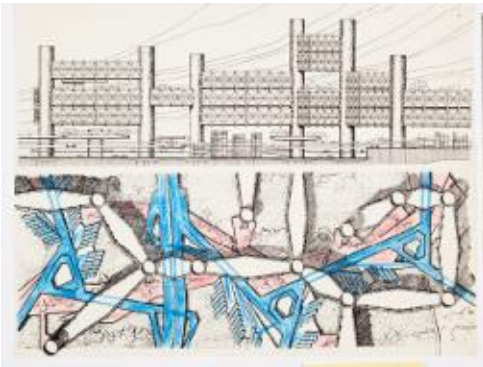
[Examples from the architecture exhibition, *Japan-ness*]



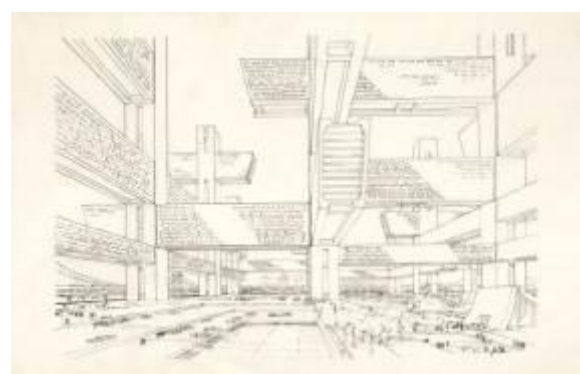
MAYEKAWA Kunio
PREMOS Model No.7 House/Description of building 1946
Collection of Mayekawa Associates, Architects & Engineers



MASUZAWA Makoto
Minimal House/Sectional sketch 1952
Collection of Masuzawa Architects & Associates
Photo: Keizo Kioku



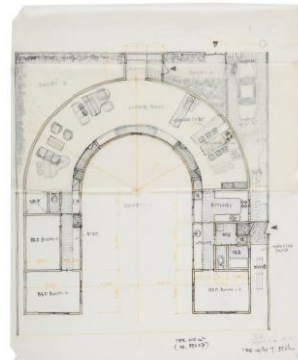
ISOZAKI Arata
Shinjuku Project: City in the Air/Elevation and Floor Plan 1962
Collection of Arata Isozaki and Associates



TANGE Kenzo
A Plan for Tokyo, 1960-Toward a Structural Organization/Perspective of Office Tower 1960
Collection of Urban Design Laboratory, Department of Urban Engineering, the University of Tokyo
Photo: Keizo Kioku



KIKUTAKE Kiyonori
Miyakonojo Civic Center/Model 1966
Collection of Kikutake Architects
Photo: Keizo Kioku



ITO Toyo
U-Shaped House/Study in the early phase n.d.
Collection of Toyo Ito & Associates, Architects
Photo: Keizo Kioku

■Japanese art exhibition

[Title]	<i>Japanorama—New vision on art since 1970</i>
[Dates]	Friday, October 20, 2017 – Monday, March 5, 2018
[Opening Hours]	Until October 31: Monday/Wednesday/Thursday: 10:00 – 18:00; Friday – Sunday: 10:00 – 19:00; Tuesday: Closed From November 1: Wednesday – Monday: 10:00 – 18:00; Tuesday: Closed
[Venue]	Centre Pompidou-Metz (Metz, France)
[Organizers]	The Japan Foundation, Centre Pompidou-Metz
[With special support from]	Ishibashi Foundation
[Sponsor]	ANA (All Nippon Airways)
[Curator]	Yuko Hasegawa (Artistic Director of the Museum of Contemporary Art Tokyo)
[Exhibition Design]	Kazuyo Sejima (SANAA)
[Artists]	Some 100 artists and groups (to be finalized) including: AIDA Makoto, AKASEGAWA Genpei, ISHIHARA Tomoaki, ITO Zon, ENOKURA Koji, OHTAKE Shinro, ODANI Motohiko, KASHIKI Tomoko, KIMURA Tsunehisa, KUSAMA Yayoi, KUDO Tetsumi, KOGA Harue, KOSHIMIZU Susumu, SAWA Hiraki, SHIOMI Mieko, SHIMAMOTO Shozo, SUGA Kishio, TAKAYAMA Noboru, TATEISHI Tiger, TANAKA Atsuko, Chim↑Pom, DEKI Yayoi, TERUYA Yuken, NAKAGAWA Yukio, NAKAZONO Koji, NAKANISHI Natsuyuki, NAKAHARA Kodai, NAKAMURA Hiroshi, NARA Yoshitomo, NOMURA Hitoshi, FUKUSHIMA Hideko, MACHIDA Kumi, MURAKAMI Takashi, MURAKAMI Tomoharu, MORI Mariko, YAMAKAWA Fuyuki, YOKOO Tadanori
[Website]	http://www.centrepompidou-metz.fr/en/japanorama-new-vision-art-1970
[Examples from the art exhibition, <i>Japanorama</i>]	



Kodai NAKAHARA
Viridian Adaptor + Kodai's Morpho II 1989
Collection of Toyota Municipal Museum of Art
Photo by Katsunori Iwase



Yuken TERUYA
You-I, You-I 2002
Collection of The Dai-Ichi Life Insurance Company, Limited
©Yuken Teruya

■ Japonismes 2018

Japonismes 2018 is a large-scale event (Secretariat: the Japan Foundation) showcasing Japanese culture that will take place from July 2018 to February 2019, mainly in Paris. The program includes a broad range of events that extends from traditional culture such as Kabuki, Noh and Kyogen, and Gagaku to contemporary theater, contemporary art, manga, anime, and Japanese film. Major exhibitions include Ito Jakuchu, the Rinpa School of paintings, and art from the Jomon period that represents the origin of Japanese culture.

Japonismes 2018 webpage (The Japan Foundation): <http://www.jpff.go.jp/e/about/area/japonismes/index.html>

● **Organizer / General inquiries:** The Japan Foundation Arts and Culture Dept.
Japan-ness: Suzuki (Ms.), Nagata (Ms.) / Japanorama: Namba (Ms.), Tokuyama (Ms.)
Tel: +81-(0)3-5369-6063 / Fax: +81-(0)3-5369-6038 / E-mail: metz@jpf.go.jp

● **Press inquiries:** The Japan Foundation Communication Center Nimura (Mr.), Kumakura (Ms.)
Tel: +81-(0)3-5369-6075 / Fax: +81-(0)3-5369-6044 / E-mail: press@jpf.go.jp