

# Financial Affairs and Organization

## Financial Statements

Budgets and Results.....	36
Balance Sheet .....	37
Profit and Loss Statement .....	38
Statement of Loss Appropriation .....	38
Cash Flow Statement .....	39
Statement of Administrative Service Execution Costs ...	39
<b>Financial Cooperation from the Private Sector .....</b>	<b>40</b>
<b>Organization Chart.....</b>	<b>42</b>
<b>Committees .....</b>	<b>43</b>
<b>Overseas Offices .....</b>	<b>44</b>
<b>Contact List .....</b>	<b>45</b>

## Financial Statements

### Budgets and Results in FY2007

(In millions of yen)

		Budget	Result
Revenues	Government subsidies	13,049	13,049
	Investment revenue	2,101	2,041
	Donation revenue	858	1,130
	Other revenue	272	253
	Income from commissioned projects	199	453
	Income from reversal of reserve carried over from previous mid-term target period	12	12
<b>Total</b>		<b>16,491</b>	<b>16,938</b>

Expenditures	Operating expenses	13,470	13,459
	Arts and cultural programs	2,218	2,177
	Japanese-language programs	3,473	3,507
	Japanese studies and intellectual exchange programs	2,438	2,158
	Survey, research, and information-service programs	528	490
	Other programs	4,814	5,126
	General and administrative expenses	3,651	3,603
	Salaries and wages	1,972	1,923
	Supplies	1,679	1,680
<b>Total</b>		<b>17,121</b>	<b>17,062</b>

- Notes: 1. In the Statement of Accounts, salaries and wages for executives and regular employees of the Japan Foundation employed within Japan have all been summed up together as general and administrative expenses. In the Profit and Loss Statement, salaries and wages for executives and regular employees employed within Japan have been summed up as expenses in the relevant areas of operation, according to the nature of the employment of each individual.
2. Expenses for supplies include ¥630,000,000 not included in the revenue budget for the payment of the deposit on the new headquarters.
3. Totals may not correspond due to rounding of fractional amounts of less than 1 million yen.

# Balance Sheet

As of March 31, 2008

(In yen)

Assets			
Current assets	Cash and deposits		4,893,232,227
	Marketable securities		9,925,092,751
	Prepaid expenses		53,723,589
	Accrued income		357,816,010
	Other current assets		35,619,340
Total current assets			15,265,483,917
Tangible fixed assets	Buildings	12,645,177,700	
	Accumulated depreciation	(2,387,598,648)	10,257,579,052
	Structures	309,667,593	
	Accumulated depreciation	(111,144,521)	198,523,072
	Machinery and equipment	9,323,105	
	Accumulated depreciation	(5,925,852)	3,397,253
	Vehicles and transport equipment	113,645,949	
	Accumulated depreciation	(67,848,960)	45,796,989
	Tools, equipment, and fixtures	1,105,382,875	
	Accumulated depreciation	(695,090,144)	410,292,731
	Art objects		449,748,549
	Land		195,318,000
	Construction in progress		2,224,688
Total		11,562,880,334	
Intangible fixed assets	Land lease rights		10,598,000
	Software		51,934,591
	Telephone subscription rights		441,000
	Total		62,973,591
Investments and other assets	Investment securities		82,447,669,462
	Long-term time deposits		1,700,000,000
	Deposits and bonds		1,375,911,532
	Total		85,523,580,994
Total fixed assets			97,149,434,919
<b>Total assets</b>			<b>112,414,918,836</b>

Liabilities			
Current liabilities	Liabilities from government operational expense subsidies		382,479,659
	Donations received		16,522,545
	Amount in arrears		878,407,741
	Accrued expenses		1,654,298
	Consumption tax payable		2,218,600
	Advances received		116,818,554
	Deposits payable		24,378,685
	Lease liabilities		14,392,639
	Exchange contracts		11,571,692
	Allowances		
Allowances for bonuses	15,989,014	15,989,014	
Total current liabilities			1,464,433,427
Fixed liabilities	Government operational expense subsidies related to asset counterpart	765,040,088	
	Donations related to asset counterpart	5,574,937	770,615,025
	Long-term lease liabilities		26,068,354
Total fixed liabilities			796,683,379
<b>Total liabilities</b>			<b>2,261,116,806</b>

Net assets			
Capital stock	Government investment	112,970,859,465	
	Total		112,970,859,465
Capital surplus	Capital surplus	(131,441,821)	
	Accumulated depreciation outside profit and loss	(3,066,208,839)	
	Cumulative loss due to impairment for items other than profit and loss	(126,000)	
	Endowments from private sector	900,261,787	
	Total		(2,297,514,873)
Retained earnings	Unappropriated loss for the term (of which: Gross loss for the term)	(507,970,870)	
	Total		(507,970,870)
Valuation and translation adjustments	Deferred gains or losses on hedges	(11,571,692)	
	Total		(11,571,692)
Total net assets			110,153,802,030
<b>Total liabilities and net assets</b>			<b>112,414,918,836</b>

## Profit and Loss Statement

April 1, 2007 to March 31, 2008

(In yen)

Ordinary expenses	Arts and cultural programs		2,516,859,140
	Japanese-language programs		3,870,843,399
	Japanese studies and intellectual exchange programs		2,401,521,043
	Survey, research, and information-service programs		665,429,261
	Other programs		
	Overseas programs	4,085,306,497	
	Cooperating in cultural exchange facilities program	1,099,330,708	5,184,637,205
	General and administrative expenses		1,787,221,971
	Financial expenses		396,404
Miscellaneous income deductions		1,389,221,402	
<b>Total ordinary expenses</b>			<b>17,816,129,825</b>

Ordinary income	Income from government operational expense subsidies		12,587,326,476
	Income from investments		2,105,373,780
	Income from commissioned projects		151,911,863
	Income from donations		
	Income from donations	21,764,155	
	Income from specified donations	1,091,689,260	1,113,453,415
	Refund of asset counterpart		
	Refund of government operational expense subsidies related to asset counterpart	124,018,347	
	Refund of donations related to asset counterpart	835,033	124,853,380
	Financial income		
	Interest received	7,111,901	7,111,901
Sundry income		449,798,887	
<b>Total ordinary income</b>			<b>16,539,829,702</b>
<b>Ordinary loss</b>			<b>1,276,300,123</b>

<b>Extraordinary losses</b>			
	Retirement of fixed assets	2,275,317	2,275,317

<b>Extraordinary profits</b>			
	Refund of government operational expense subsidies related to asset counterpart	2,275,317	2,275,317

Net loss for the term		1,276,300,123
Income from reversal of reserve carried over from previous mid-term target period		768,329,253
<b>Gross loss for the term</b>		<b>(507,970,870)</b>

## Statement of Loss Appropriation

(In yen)

<b>Unappropriated losses at the end of the term</b>			<b>(507,970,870)</b>
	Gross loss for the term	(507,970,870)	
<b>Deficit carried over to the next term</b>			<b>(507,970,870)</b>

## Cash Flow Statement April 1, 2007 to March 31, 2008

(In yen)

Cash flow from operating activities	Program expenses	(13,404,160,750)
	Salaries and wages	(2,574,097,337)
	Other operating expenses	(1,079,424,316)
	Revenue from government operational expense subsidies	13,048,823,000
	Investment revenue	2,041,013,153
	Revenue from commissioned projects	253,318,794
	Revenue from donations	1,129,975,800
	Other miscellaneous revenue	561,763,548
	<b>Subtotal</b>	<b>(22,788,108)</b>
	Interest received	6,788,517
	Interest paid	(396,404)
	Amount of payments to national treasury	(297,793,964)
	<b>Cash flow from operating activities</b>	<b>(314,189,959)</b>
Cash flow from investment activities	Expenses for acquisition of investment securities	(11,979,517,858)
	Revenue from redemption of investment securities	11,454,047,898
	Expenses for deposit of fixed deposits	(1,104,780,000)
	Revenue from refund of fixed deposits	1,000,000,000
	Expenses for acquisition of tangible and intangible fixed assets	(186,352,186)
	Revenue from selling of tangible fixed assets	28,255,911
	Expenses for acquisition of deposits and bonds	(630,492,270)
	Revenue from acquisition of deposits and bonds	918,607,572
<b>Cash flow from investment activities</b>	<b>(500,230,933)</b>	
Cash flow from financial activities	Expenses for repayment of lease liabilities	(13,569,806)
	<b>Cash flow from financial activities</b>	<b>(13,569,806)</b>
Difference in conversion related to funds		(33,457,156)
Decrease in funds		(861,447,854)
Balance at the beginning of the term		5,654,490,081
<b>Balance at the end of the term</b>		<b>4,793,042,227</b>

## Statement of Administrative Service Execution Costs

April 1, 2007 to March 31, 2008

(In yen)

Operating expenses	Expenses in the profit and loss statement		
	Program expenses	14,639,290,048	
	General and administrative expenses	1,787,221,971	
	Financial expenses	396,404	
	Miscellaneous income deductions	1,389,221,402	
	Extraordinary losses	2,275,317	17,818,405,142
	(Deducted) Revenue on hand, etc.		
	Income from investments	(2,105,373,780)	
	Revenue from commissioned projects	(151,911,863)	
	Income from donations	(1,113,453,415)	
	Refund of donations related to asset counterpart	(835,033)	
	Financial income	(7,111,901)	
	Miscellaneous profits	(449,798,887)	(3,828,484,879)
<b>Total</b>		<b>13,989,920,263</b>	
Amount equivalent to depreciation, etc. outside profit and loss	Amount equivalent to depreciation outside profit and loss	574,884,254	
	Amount equivalent to the value of retired fixed assets outside profit and loss	6,864,651	581,748,905
Estimated non-reserve employee bonuses			(257,096)
Estimated increase in retirement allowances not provided for			103,127,898
Opportunity cost	Opportunity cost of margin transactions which are gratis or at a reduced fee assets from national or local public bodies	524,047,068	
	Opportunity cost of investments by government or local public organizations	1,402,889,206	1,926,936,274
<b>Total administrative service execution costs</b>			<b>16,601,476,244</b>

# Financial Cooperation from the Private Sector

The Japan Foundation is able to operate its international cultural exchange programs thanks to the generosity of financial contributions from businesses, organizations, and individuals throughout the private sector. Since its establishment, the Foundation has received endowments amounting to approximately ¥900 million from 77 companies, organizations, and individuals. Donations for its annual programs also form a vital source of support.

Donations fall into two broad categories: general donations, which fund the Foundation's cultural exchange programs, and designated donations, which are accepted with the understanding that they will be used to subsidize specific cultural exchange programs operated by public interest organizations at home and abroad. From the establishment of the Foundation through the end of FY2007, donations amounted to ¥2,341.32 million in general donations and ¥64,154.78 million in designated donations.

## 1. General Donations

General donations fund programs run by the Japan Foundation. There are two categories for general donations: the "General Donation System," in which both the timing and amount of the donation are at the donor's discretion, and the "Membership System," in which a fixed donation is made each year through membership dues. The details of these categories are set out in (1) and (2) below.

During FY2007, the Foundation received a total of 1,067 general donations from the above two categories, amounting to ¥38.29 million.

### (1) General Donation System

This system is for corporate and individual donations in which the timing and amount of the donation are at the donor's discretion. At the donor's request, the donation can be put to the uses in A or B below.

#### A. Donations for program expenses

These donations are allocated to expenses for Foundation programs during the same fiscal year in which the donation was received. According to the donor's wishes, the donation can be allocated to expenses for a particular project during the fiscal year, or to programs in general.

The donors for program expenses in FY2007 were as follows:  
Canon Inc. / Nippon Steel Corporation / Suzuki Motor Corporation  
Sumitomo Chemical Co., Ltd. / All Nippon Airways Co., Ltd.  
Daiwa Securities SMBC Co. Ltd. / Takeda Pharmaceutical Company Limited

Tokyo Electric Power Company, Inc. / Toyota Motor Corporation / Nomura Holdings, Inc.

(Donations for the Japan-Hungary Cooperation Forum project to promote Japanese-language education)

- Canon Inc.  
(Donation for Vanishing Points: Contemporary Japanese Art exhibition)
- Shiseido Co., Ltd.  
(Donation for Beautiful New World: Contemporary Visual Culture from Japan exhibition)
- Bridgestone Corporation  
(Donation for Japan Foundation China Center project)
- The Bank of Tokyo-Mitsubishi UFJ, Ltd.  
(Donation for Long-term Invitation Program for Chinese High School Students and Midterm Training)

ANET, Inc. / Nanto Co., Ltd.  
(Donations for Obuchi Japan Foundation Fellowships program  
• 1,407 members of the JR Tokai Monitor Club  
• Two individuals  
(Donations for programs in general)

Donation in kind was accepted as detailed below during FY2007.  
• Cleanup Co., Ltd.  
(Installation of kitchen in Maison de la Culture du Japon à Paris)

#### B. Donations to operational funds (private endowments)

These donations are deposited in the Foundation's funds, and the interest accrued is allocated in perpetuity for program expenses. In the case of private endowments, a corporate or individual benefactor who so desires may establish a special program with a name of the benefactor's choosing. These programs are implemented in consultation with the Foundation and are termed "special benefactions." Such special benefaction programs established to date are detailed in (A) to (D) below.

#### (A) Uchida Fellowship

- a. Benefactor: The late Mr. Uchida Genko
- b. Fellowship Content: Young musicians are invited to Japan from the United States, Europe, and other regions and given the chance to work with renowned Japanese musicians and those active in

the field of music, including participation in joint performances or collaboration on joint works. In FY2007, two fellows from the United States were invited.

#### (B) Japanese Studies Fellowship Program offered by Takasago Thermal Engineering

- a. Benefactor: Takasago Thermal Engineering Co., Ltd.
- b. Fellowship Content: In order to promote Japanese studies in Southeast Asia, this scholarship provides funds to allow young Japanese studies researchers from Southeast Asia to visit Japan for research. In FY2007, the fellowship was awarded to a scholar from Indonesia researching the formation of young women's identities.
- c. Department responsible: Asia and Oceania Division, Japanese Studies and Intellectual Exchange Department

#### (C) The Takeshi Kaiko Memorial Asian Writers Lecture Series

- a. Benefactors: The late Mrs. Kaiko Hatsuko and the late Ms. Kaiko Michiko (family of the writer Kaiko Takeshi)
- b. Content of the Lecture Series: In order to promote literary exchanges by introducing Asian authors and works that are little known in Japan to the general public, this program invites Asian authors and others involved in literature to come to Japan for approximately two weeks, to organize lectures and opportunities for interaction and dialogue throughout the country. In FY2007, Li Rui from China was invited to Japan, and lectured on the theme of "China and My Literary Path: Heartbreaking Anguish" in Osaka, Tokyo, Sendai, and Hakodate.
- c. Department responsible: Community Leaders and Youth Exchange Division, Cultural Affairs Department

#### (D) Ken Watanabe Memorial Fund: Contribution of Books

- a. Benefactor: Mr. Watanabe Yukinobu (father of Mr. Watanabe Ken, a Ministry of Foreign Affairs official who died in a traffic accident during training in the United States)
- b. Content of Contribution: Donation of Japanese studies books to the Tianjin Academy of Social Sciences; in FY2007, a total of 275 books were donated.
- c. Department responsible: Asia and Oceania Division, Japanese Studies and Intellectual Exchange Department

### (2) Membership System

Fixed donations are received in the form of membership dues and are allocated to a variety of programs implemented during the fiscal year in which the donation was made.

The "Corporate Membership System" is for contributions from companies and organizations, while the "JF Supporters Club" is for contributions from individuals and groups.

#### A. Corporate Membership System

Fixed-sum donations are received each year from companies and organizations in the form of membership dues. The members comprise Regular Members, who are asked to donate at least ¥100,000 yen, and Special Members, who are requested to donate at least ¥500,000.

Donations are allotted to cultural exchange programs taking place in the year in which the donations are made. Members can enjoy privileges such as access to the Foundation's library, receiving the Foundation's publications, and invitations to lectures and other events sponsored or co-sponsored by the Foundation.

As of the end of FY2007, members included:

- (a) Special members  
Kodansha Ltd. / Shochiku Co., Ltd. /  
Electric Power Development Co., Ltd. / Mizuho Bank Ltd. /  
Bank of Tokyo-Mitsubishi UFJ, Ltd. / Wacoal Corp. /
- (b) General members  
Ikenobo / Idemitsu Kosan Co., Ltd. / Insho-sha / Ushio Inc.  
Urasenke Tradition of Tea / NHK International Inc. / Katolec Corp. /

Kansai Urban Banking Corp. / Kinokuniya Company Ltd.  
 Kyoei Fire & Marine Insurance Co., Ltd. /  
 Kodansha International Ltd. / Kodokan Judo Institute /  
 International Hospitality Conference Service Association  
 Kokusai Service Agency / Komazawa University  
 Sakura Motion Picture Co., Ltd. / Shiseido Co., Ltd. / Japan Echo Inc.  
 Publishers Association for Cultural Exchange /  
 Shorinji Kempo Organization / Starlanes Travel Service Corp. /  
 All Japan Kendo Federation  
 Dai-Ichi Mutual Life Insurance Company /  
 Daiichi Seiwa Jimusho Co., Ltd. / Daikin Industries, Ltd. /  
 Daiwa Securities SMBC Co., Ltd. / Dentsu Inc. /  
 The Tokyo Commodity Exchange / Tokyo Studio Co., Ltd.  
 Tokyo Business Service Co., Ltd. / Nikko Cordial Securities, Inc.  
 Motion Picture Producers Association of Japan, Inc. /  
 Nippon Origami Association /  
 Japan International Cooperation Center /  
 Nomura Securities Co., Ltd. / Bikon Co., Ltd.  
 Bijutsu Shuppan Design Center Co., Ltd. / Hitachi Ltd.  
 Video Pedic Inc. / Fuji Xerox Co., Ltd. / Honda Motor Co., Ltd. /  
 Bonjinsha Inc. / Matsushita Electric Industrial Co., Ltd.  
 Mizuho Securities Co., Ltd. / Sumitomo Mitsui Banking Corp. /  
 Mitsubishi UFJ Securities Co., Ltd. / Meiji Shoin Holdings /  
 Mori Building Co., Ltd. /  
 Youth for Understanding International Exchange

### (3) JF Supporters Club

Fixed donations are received from individuals and groups in the form of membership dues. Funds from membership fees (¥3,000 for Associates, ¥2,000 for student Associates, and ¥10,000 for Partners) are allocated to general programs in the fiscal year in which they were received. Members, depending on their membership type, are invited to events and can enjoy privileges such as discounted or free publications, etc.

## 2. Designated Donations Program

Under this program, individual and corporate donations to support the international cultural exchange programs of public interest organizations at home and abroad are received by the Foundation with the understanding that they will be used to subsidize specific cultural exchange projects. By providing funds to public interest organizations to support international cultural exchange programs through the Foundation, donors are eligible to receive tax privileges on their donations.

Eligible programs include personnel exchanges, overseas Japanese studies and Japanese-language education; the staging of performances and exhibitions; the holding of seminars, etc.; projects to produce audiovisual materials for introducing Japanese culture overseas; the development of facilities for educational and cultural activities and the purchase and provision of related goods; and research and studies necessary for international cultural exchange. A deliberative council of external experts decides upon the recipients of designated donations.

During FY2007, the Designated Donations Program received ¥1,091.69 million from 780 individuals and 546 companies or groups. The monies were received in 48 payments. These funds were used to subsidize the 32 programs outlined in (1) below. Examples of major projects in 2007 are detailed in (2).

### (1) Programs supported during FY2007

- Development for the Rotary Ambassadorial Scholarships and other Rotary Educational Programs 1 (U.S.)
- Development for the Rotary Ambassadorial Scholarships and other Rotary Educational Programs 2 (U.S.)
- U.S.-Japan Bridging Foundation Scholarship Program (U.S.)
- Utopia Hokkaido is cleared Hidezo Imaruoka Large-sized Photograph Exhibition” and “Japan and China high school student photography technical exchange meeting” (China and Japan)
- The Fund Raising Project for Helping Establish the “Ishikawa Memorial Fund for Comparative Japanese Law” (U.S.)
- The University of Alberta Prince Takamado Japan Canada Memorial Fund (Canada)
- Japan and Her Neighbors: Changing Relations (U.S.)
- Japanese Legal Studies Program of University of Michigan Law School (U.S.)
- Nagashima Ohno & Tsunematsu Program for Japanese Law and Culture at the Stanford Law School (U.S.)
- Nagashima Ohno & Tsunematsu Scholarship Fund, Columbia Law School (U.S.)
- Nagashima Ohno & Tsunematsu Program for Japanese Law and Culture at the University of Chicago Law School (U.S.)

- Nagashima Ohno & Tsunematsu Program for Japanese Law and Culture at Duke Law School (U.S.)
- Japan Return Programme Nihongo Summit 2006 (Japan)
- LSH Asia Scholarship (Japan)
- The 2nd JRP Nihongo/Japanese Culture World Conference, Beijing (China)
- Project-Fund for Sprachzentrum für Japanisch e.V. (Germany)
- Hakusyoukai Noh Performance in Beijing (China)
- Music From Japan Festival 2007 (U.S.)
- Shitennoji Wasso (Japan and Korea)
- 14th Honolulu Festival (U.S.)
- World Partnership Forum in Ibaraki (Japan)
- Mi-Bemol Saxophone Ensemble in Malaysia (Malaysia)
- The Japan-China Exchange Year of Culture and Sports 2007 (China)
- Project of the Japanese Executive Committee for Japan-India Friendship Year (India)
- Japan-Korea Interchange Festival 2007 in Seoul (Korea)
- The World Festival of Children's Performing Arts in Toyama, 2008 (Japan)
- Radio Program Introducing a J-pop Music to Chinese Young People (China)
- Conservation Work of the Japanese House and Garden “Shofuso” in Philadelphia, U.S.A (U.S.)
- Asian University for Women (Bangladesh)
- KEEP International Training and Exchange Center Project (Japan)
- Modern Tea House Project in Frankfurt (Germany)
- Construction and Exposition of Monument Commemorating Centennial of Japan-Brazil Immigration (Brazil)

### (2) Examples of projects during FY2007

#### A. The University of Alberta Prince Takamado Japan Canada Memorial Fund (Canada)

- Organizer: The University of Alberta
- Designated donation (amount of designated subsidy): 35 million (FY2007, to be continued until FY2008)
- Program Content: The Prince Takamado Japan Canada Memorial Fund was established within the University of Alberta Endowment Fund. The interest earned by the fund is to be used for three projects, which will be held every year: All Canada Japanese Speech contest, aimed at university students from overseas studying Japanese in Canada; Essay Competition, aimed at Canadian university students; and Study Scholarship in Japan, aimed at Canadian undergraduate and graduate students at CANJAS institutions.

#### B. The Japan-China Exchange Year of Culture and Sports 2007

- Organizer: Executive Committee for the Japan-China Exchange Year of Culture and Sports 2007
- Designated donation (amount of designated subsidy): 487.25 million
- Program Content: The Japan-China Exchange Year of Culture and Sports 2007 commemorated the 35th anniversary of the normalization of diplomatic relations between Japan and China. The Executive Committee organized five projects with the aim of furthering mutual understanding and trust between the two countries at the grassroots level: the Japan-China Festival in Beijing, Tsugaru Shamisen and Taiko in Shanghai, the Grand Finale Reception and Concert in Beijing, the Special PR Project, and the Year-round PR Project. The Japan-China Festival in Beijing attracted some 100,000 visitors, and all the projects were highly praised for offering a broad introduction to both Japan and China

## 3. Tax Privileges

The Japan Foundation is a “Designated Public Benefit Organization” (or *Tokutei Koh-eki Zoushin Houjin*), in accordance with Article 77 of the Corporate Tax Enforcement Order and Article 217 of the Income Tax Enforcement Order. Therefore, donations to the Foundation are subject to the following tax privileges.

### (1) Corporations

Deductible expenses may be declared in addition to the standard deduction for donations.

The upper limit for financial losses associated with the donation is calculated using the following formula:

Upper limit of financial loss = {(amount of capital) × (period of months / 12 × 0.0025) + (amount of income for fiscal period in question × 0.025)} × 0.5

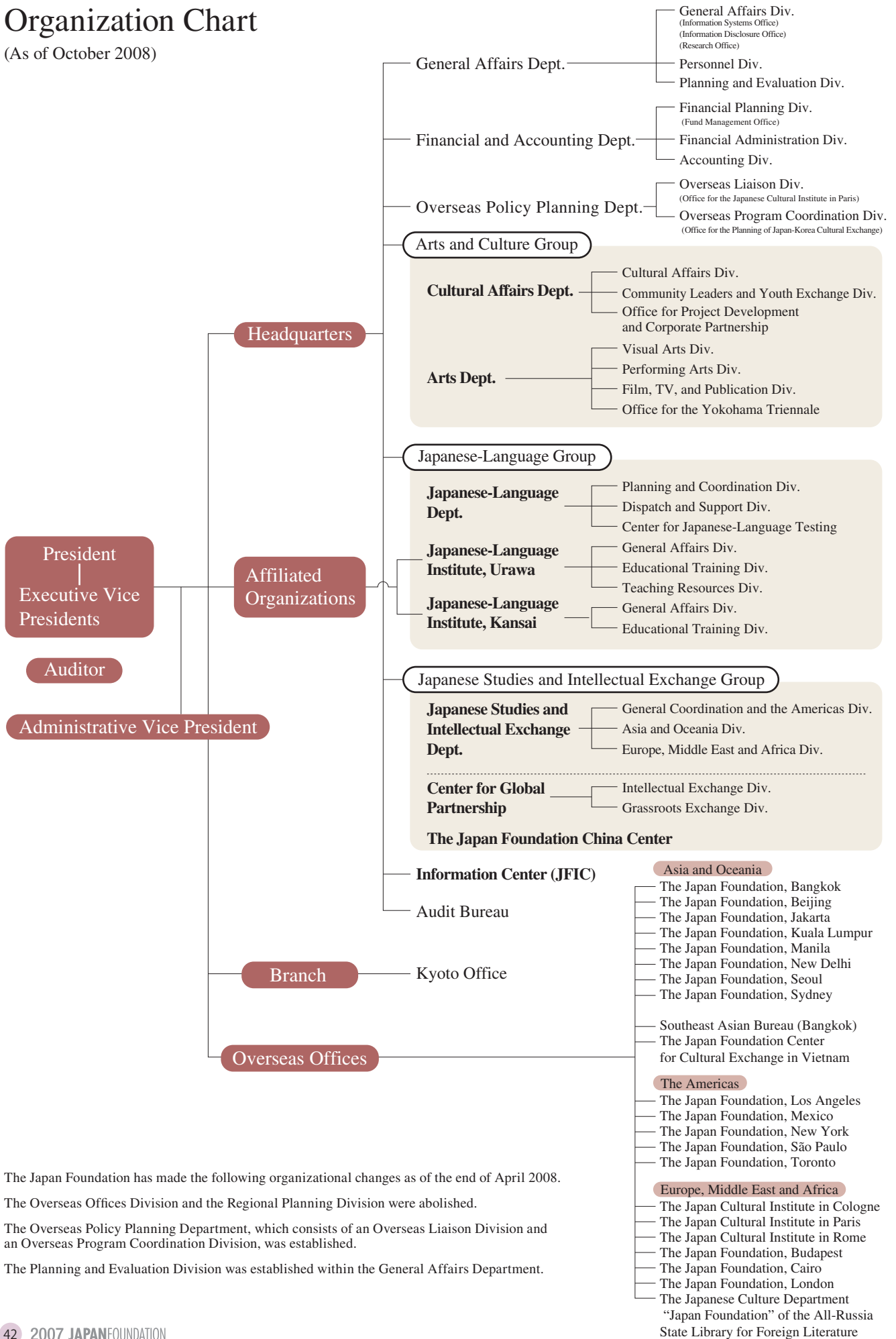
### (2) Individuals

An amount equal to the donation minus ¥5,000, up to 40% of gross income, is tax deductible. Donations of inherited assets are also eligible for tax privileges.



# Organization Chart

(As of October 2008)



The Japan Foundation has made the following organizational changes as of the end of April 2008.

The Overseas Offices Division and the Regional Planning Division were abolished.

The Overseas Policy Planning Department, which consists of an Overseas Liaison Division and an Overseas Program Coordination Division, was established.

The Planning and Evaluation Division was established within the General Affairs Department.

# Committees

## ■ The Advisory Committee for Evaluation of the Japan Foundation

This Committee evaluates the Japan Foundation programs and related operations in response to requests by the President of the Foundation, and advises on the improvement of operations and other necessary measures. Its members include experts and academics with in-depth knowledge of international exchange and Japan Foundation activities.

**Members** (in alphabetical order) (as of April 1, 2007)

Asami Tamotsu	Director, Chief Executive of the Hokkaido Branch Office of The Yomiuri Shimbun	Mikuriya Takasi	Professor, Research Center for Advanced Science and Technology, at the University of Tokyo
Hanawa Shoji	Adviser to Tokyo Electric Power Co. (until September 30, 2006)	Sakuma Katsuhiko	Professor at the University of the Sacred Heart, Tokyo
Iwao Sumiko	Professor Emeritus of Keio University	Sota Shuji	Professor at Atomi University
Katayama Masao	Managing Director of The Saison Foundation	Takashina Shuji	Director, Ohara Museum of Art

## ■ The American Advisory Committee for Japanese Studies

**Members** (in alphabetical order) (as of March 31, 2008)

Mary Elizabeth Berry	Professor at the University of California, Berkeley	Wesley Jacobsen	Professor at Harvard University
Kent Calder	Professor and Director of Edwin O. Reischauer Center for East Asian Studies at Johns Hopkins University	William W. Kelly	Professor at Yale University
James C. Dobbins	Professor at Oberlin University	Leonard Lynn	Professor at Case Western Reserve University
Wayne Farris	Professor at the University of Hawaii, Manoa	Susan Napier	Professor at the University of Texas, Austin
Sabine Fruhstuck	Associate Professor at the University of California, Santa Barbara	Laurel R. Rodd	Professor at the University of Colorado, Boulder
Laura Hein	Associate Professor at Northwestern University	Leonard Schoppa	Associate Professor at the University of Virginia
		Veronica Taylor	Professor and Director of the Asia Law Center at the University of Washington
		Kristina K. Troost	Chief of International and Regional Studies, Perkins Library, Duke University
		Kikuko Yamashita	Associate Professor at Brown University

## ■ Advisory Committee of the Maison de la culture du Japon à Paris (The Japan Cultural Institute in Paris)

This Committee serves as an advisory body to the President of the Maison de la culture, and oversees its management.

**Members** (in alphabetical order) (as of March 31, 2008)

From Japan		From France	
Fukuhara Yoshiharu	Honorary Chairman of Shiseido Co., Ltd.	Paul Andreu	Architect
Haga Toru	Director of Okazaki Mindscape Museum, Honorary President of Kyoto University of Art and Design, and Professor Emeritus at the University of Tokyo	Alain Chevalier	Former Chairman of LMVH
Higuchi Yoichi	President of the Maison Franco-Japonaise, Member of the Japan Academy, and Professor Emeritus at the University of Tokyo	André Larquié	President, Palais Omnisport de Paris-Bercy
Ito Junji	Art Critic and Professor at the Faculty of Art and Design, University of Toyama	Jean Maheu	Advisor to the French Audit Commission
Nishigaki Toru	Professor, Graduate School of Interdisciplinary Information Studies, at the University of Tokyo	Jacques Rigaud	Former President, L'Association pour le Développement du Mécénat Industriel et Commercial
Ogino Anna	Author and Professor at the Faculty of Letters, Keio University	André Ross	Former French Ambassador to Japan
Sado Yutaka	Conductor	Christian Sautter	Deputy Mayor of Paris in Charge of Economic Development, Finance, and Employment
Sakai Tadayasu	Director, Setagaya Art Museum	Louis Schweitzer	Chairman of Renault, President of the High Authority to Fight Discrimination and Promote Equality, and Chairman of the Board of <i>Le Monde</i>
		Pierre Soulages	Artist and painter
		Valérie Terranova	Secretary-General of the Jacques Chirac Foundation



## Overseas offices

### ■ The Japan Foundation, Seoul

Heungkuk Life Insurance Bldg. 3F, 226,  
Sinmunno 1-ga, Jongno-gu, Seoul, 110-061, Korea  
TEL:82-2-397-2820 FAX:82-2-397-2830

### ■ The Japan Foundation, Beijing

#301, 3F SK Tower, No. 6 Jia Jianguomenwai Avenue,  
Chaoyang District, Beijing, 100022 China  
TEL:86-10-8567-9511 FAX:86-10-8567-9075

### ■ The Japan Foundation, Jakarta

Summitmas I, 2-3F, Jalan Jenderal Sudirman, Kav. 61-62  
Jakarta Selatan 12190, Indonesia  
TEL:62-21-520-1266 FAX:62-21-525-5159

### ■ Thailand

#### Southeast Asian Bureau

#### The Japan Foundation, Bangkok

Serm-Mit Tower, 10F, 159 Sukhumvit 21 Asoke Road,  
Bangkok 10110, Thailand  
TEL:66-2-260-8560~64 FAX:66-2-260-8565

### ■ The Japan Foundation, Manila

12th Floor, Pacific Star Bldg.,  
Sen. Gil J. Puyat Ave. Ext., cor. Makati Ave., Makati,  
Metro Manila, The Philippines  
TEL:63-2-811-6155~8 FAX:63-2-811-6153

### ■ The Japan Foundation Center for Cultural Exchange in Vietnam

No. 27 Quang Trung Street, Hoan Kiem District, Hanoi, Vietnam  
TEL:84-(43)-944-7419-7420 FAX:84-(43)-944-7418

### ■ The Japan Foundation, Kuala Lumpur

18th Floor, Northpoint Block B, Mid-Valley City, No.1 Medan  
Syed Putra, 59200, Kuala Lumpur  
TEL:60-3-2284-6228 FAX:60-3-2287-5859

### ■ The Japan Foundation, New Delhi

5-A, Ring Road, Lajpat Nagar-IV, New Delhi- 110024, India  
TEL:91-11-2644-2967/68 FAX:91-11-2644-2969

### ■ The Japan Foundation, Sydney

Level 1, Chifley Plaza, 2 Chifley Square, Sydney NSW 2000,  
Australia  
TEL:61-2-8239-0055 FAX:61-2-9222-2168

### ■ The Japan Foundation, Toronto

131 Bloor Street West, Suite 213, Toronto, Ontario,  
M5S 1R1, Canada  
TEL:1-416-966-1600 FAX:1-416-966-9773

### ■ The Japan Foundation, New York

152 West 57th Street, 17F, New York, NY 10019, U.S.A.  
TEL:1-212-489-0299 FAX:1-212-489-0409

The Japan Foundation Center for Global Partnership (NY)

152 West 57th Street, 17F, New York, NY 10019, U.S.A.  
TEL:1-212-489-1255 FAX:1-212-489-1344

### ■ The Japan Foundation, Los Angeles

333 South Grand Avenue, Suite 2250, Los Angeles, CA 90071,  
U.S.A.  
TEL:1-213-621-2267 FAX:1-213-621-2590

### ■ The Japan Foundation, Mexico

Av. Ejército Nacional No. 418, 2° Piso, Col. Chapultepec  
Morales, C.P. 11570, México, D.F., México  
TEL:52-55-5254-8506/8510/8491 FAX:52-55-5254-8521

### ■ The Japan Foundation, São Paulo

Avenida Paulista 37, 2° andar CEP 01311-902, São Paulo, SP,  
Brasil  
TEL:55-11-3141-0843/0110 FAX:55-11-3266-3562

### ■ Istituto Giapponese di Cultura (The Japan Foundation)

Via Antonio Gramsci 74, 00197 Roma, Italy  
TEL:39-06-322-4754/94 FAX:39-06-322-2165

### ■ The Japan Foundation, London

Russell Square House, 10-12 Russell Square, London WC1B  
5EH, United Kingdom  
TEL:44-20-7436-6695 FAX:44-20-7323-4888

### ■ Japanisches Kulturinstitut (The Japan Foundation)

Universitätsstraße 98, 50674 Köln, Germany  
TEL:49-221-9405580 FAX:49-221-9405589

### ■ Maison de la culture du Japon à Paris (The Japan Foundation)

101 bis, quai Branly, 75740 Paris Cedex 15, France  
TEL:33-1-44-37-95-00 FAX:33-1-44-37-95-15

### ■ The Japan Foundation, Budapest

Oktogon Ház 2F, Aradi u.8-10, 1062 Budapest, Hungary  
TEL:36-1-214-0775/6 FAX:36-1-214-0778

### ■ The Japanese Culture Department “Japan Foundation” of the All-Russia State Library for Foreign Literature

4th Floor, Nikoloyamskaya Street, 1, Moscow, Russian  
Federation, 109189  
TEL:7-495-626-5583/85 FAX:7-495-626-5568

### ■ The Japan Foundation, Cairo

Cairo Center Building, 5F, 2 Abdel Kader Hamza Street,  
Garden City, Cairo, Arab Republic of Egypt  
TEL:20-2-2794-9431/9719 FAX:20-2-2794-9085



JAPANFOUNDATION

## Contact list

### The Japan Foundation/Headquarters

4-4-1 Yotsuya, Shinjuku-ku, Tokyo 160-0004, Japan

General Affairs Div.

TEL +81-3-5369-6051

FAX +81-3-5369-6031

Information Center (JFIC)

TEL +81-3-5369-6075

FAX +81-3-5369-6044

<http://www.jpf.go.jp/e/>

### The Japan Foundation Japanese-Language Institute, Urawa

5-6-36 Kita Urawa, Urawa-ku, Saitama-shi, Saitama-ken 330-0074, Japan

TEL +81-48- 834-1180

FAX +81-48- 834-1170

<http://www.jpf.go.jp/e/urawa/>

### The Japan Foundation Japanese-Language Institute, Kansai

3-14 Rinku Port Kita, Tajiri-cho, Sennan-gun, Osaka 598-0093, Japan

TEL +81-72-490-2600

FAX +81-72-490-2800

<http://www.jpf.go.jp/e/kansai/>

### The Japan Foundation Kyoto Office

4th Floor, Urbanex Oike Bldg. East

361-1 Umeya-cho, Oike-sagaru, Kurumaya-cho, Nakagyo-ku,

Kyoto 604-8186, Japan

TEL +81-75-211-1312

FAX +81-75-255-1273