

Japanese-Language Program for Specialists in Cultural and Academic Fields <Programs open to applications from overseas>

This program supports the Japanese-language studies of specialists (researchers, postgraduate students, librarians, museum curators, etc.) who require high-level Japanese language ability to smoothly conduct research and work in their field. The program provides participants with practical Japanese-language ability based on a curriculum that is specifically designed for the needs of each field.

The purpose of this intensive training is to learn the kind of Japanese that is useful for specialized work and research activities, but professional education in their specific area of expertise is not provided

◆ Program Period/Scheduled Number of Participants

2 courses are conducted every year.

- 2-month course: June to August / Approx. 12 participants
 ※2022 Academic year : January to March in 2023
- 5-month course: July to December / Approx. 12 participants
 ※5-month course has changes from 6-month course since 2020 Academic year.

Participants of Years 2019 - 2021

	2019		2020	2021	Total
	2month	6month	Online	Online	
Korea		2	1		3
China			2	1	3
Taiwan		1	2		3
Mongolia	1				1
Indonesia			1		1
Philippines				1	1
Viet Nam		1			1
Australia	1	1	1		3
Canada				1	1
U.S.A	4		2	3	9
Brazil		1		2	3
Italy		2			2
U.K			2	2	4
Netherlands			2		2
Germany		1			1
Ukraine	1				1
Kazakhstan	1				1
Hungary		1	2		3
Russia	1				1
Egypt			1		1
Total	9	10	16	10	45

◆ Eligible Participants

Potential participants should reside overseas and currently be active as a researcher, postgraduate student, librarian, or museum curator. They should also be active in fields such as the social sciences and humanities, and their work should be somehow related to Japan.

◆ Application Method

Details of the application method are available on the Japan Foundation website.

• [the Japan Foundation website](https://www.jpf.go.jp/e/program/japanese.html#jp_7) https://www.jpf.go.jp/e/program/japanese.html#jp_7

• For inquiries, please contact the Educational Training Team at Japanese-Language Institute, Kansai of the Japan Foundation.

TEL: 072-490-2601

FAX: 072-490-2801

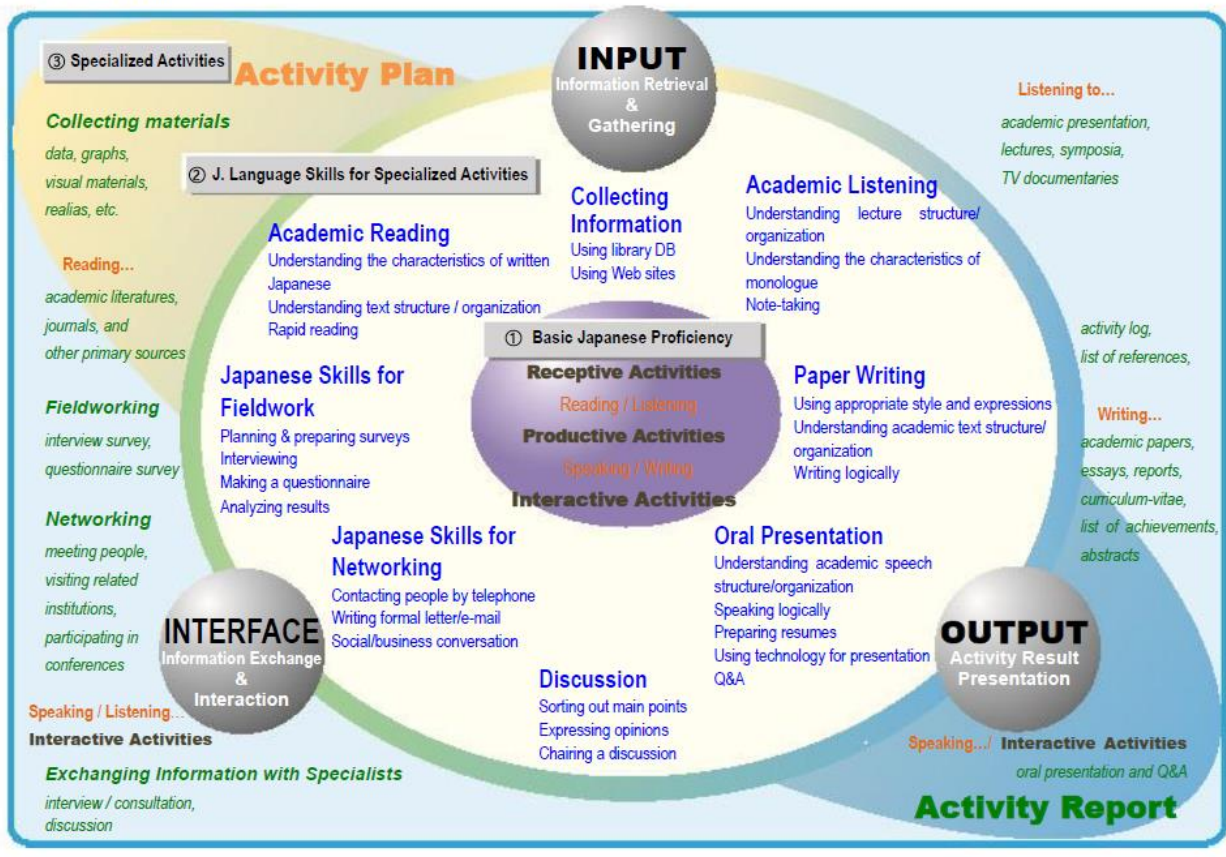
E-mail: jpf-kansai@jpf.go.jp

◆ Training Concept Design

Each course has its different focus depending on its course period.

The 2-month course focuses on basic Japanese proficiency (the area ① on the chart).

The 5-month course covers all areas ①, ②, and ③ where the participants are encouraged to carry out their own specialized activities as well.



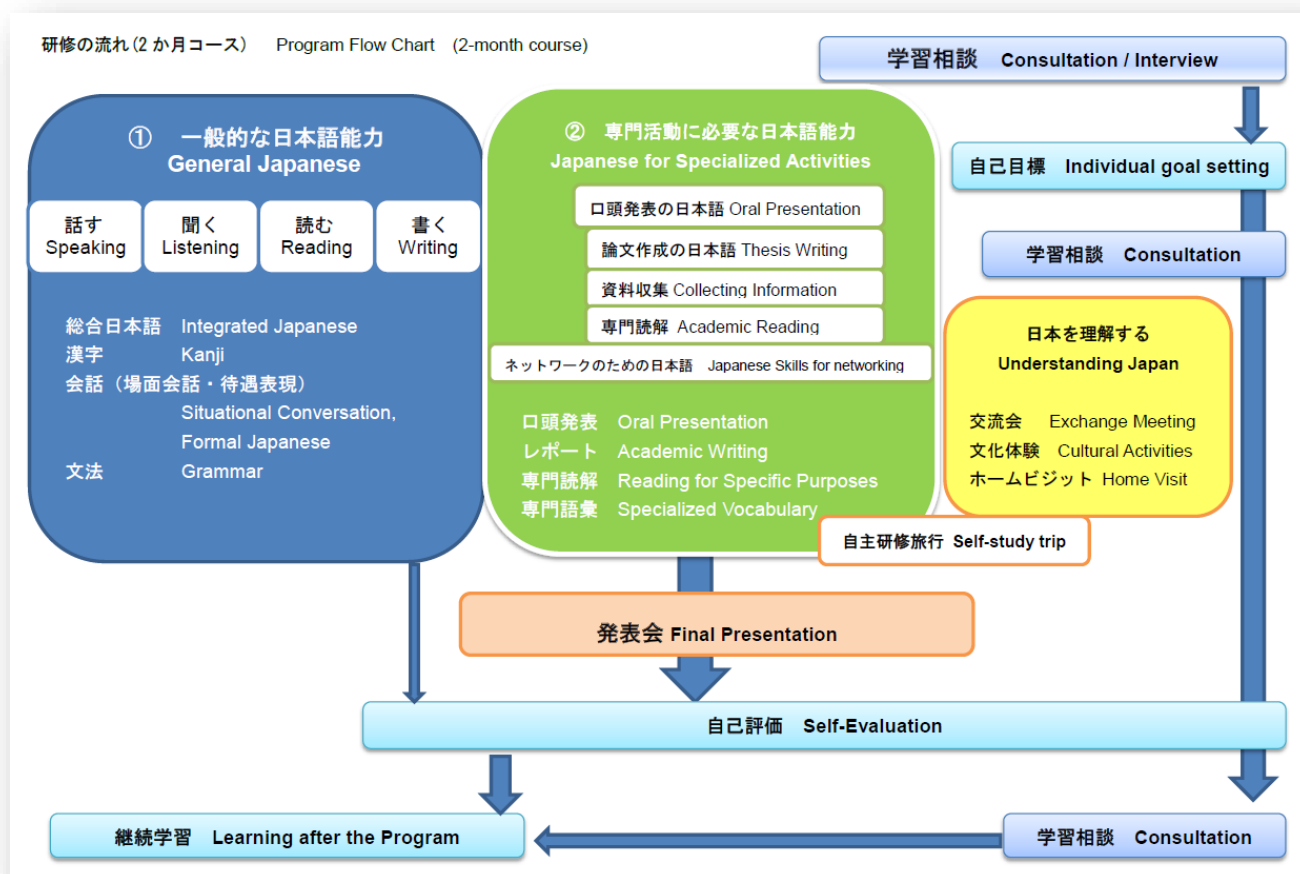
Japanese-Language Program for Specialists in Cultural and Academic Fields (2-Month Course)

- Training Content

Japanese classes in the 2-month course focus on general Japanese language proficiency and aim for level-based improvement of speaking, hearing, reading, and writing skills. Training also seeks to provide participants with Japanese-language ability useful for conducting specialized work and academic research activities.

In addition to Japanese-language classes, the 2-month course includes activities for enhancing participants' understanding of Japanese society, such as social events with the local community and field trips. Although the 2-month course does not include an intensive study period for specialized activities (research activities) like the 5-month course, it is possible for students to act independently to gather materials, meet with specialists and perform other research activities during their free time and on class holidays. As a general rule, absence from Japanese-language classes is not possible.

- Program Flow



Example of Class Schedule

	MON	TUE	WED	THU	FRI
1 (9:00-9:50)	Integrated Japanese/ Academic Grammar		Integrated Japanese		Socio- Cultural Experience Program/ Independent Study
2 (10:00-10:50)					
3 (11:00-11:50)	Kanji· Kanji-based Vocabulary	Conversation	Kanji· Kanji-based Vocabulary	Conversation	
4 (13:20-14:10)	Kanji-based vocabulary Practice	Presentation	Assembly	Presentation	
5 (14:20-15:10)	Computer		Nihongo Café		
6 (15:20-16:10)	ICT	Specialized Reading/ Report Writing	Specialized Reading/ Report Writing		

 : Compulsory Subjects

Compulsory classes include a general Japanese language class for increasing overall ability, and oral presentation classes designed to enable participants to introduce individual research themes and areas of interest in Japanese. At the end of the course, the results are given in Japanese in a final presentation.

The final presentation consists of 10-minute speech using PowerPoint graphics created by the participant.

◆ **Japanese-Language Program for Specialists in Cultural and Academic Fields (5-Month Course)**

● Training Content

Japanese classes in the 5-month course focus on Japanese language proficiency necessary for specialized work or research activities. The training also aims to assist participants in acquiring Japanese language skills necessary to collect information, give presentations, and network with related professions. The training cultivates practical Japanese language skills through research activities such as visits to related business and research institutions, as well as meetings with specialists.

Moreover, the 5-month course includes activities for enhancing participants' understanding of Japanese society, such as social events with the local community and field trips. The course also includes programs for visiting institutions related to the participants' field of expertise. Furthermore, the course includes an intensive study period for specialized activities (research activities). During this period, participants are able to focus on research activities such as the collection of materials and meeting with specialists. Although specialized activities (research activities) are conducted by consulting with a tutor, participants are expected to have a specific and concrete research theme/activity theme, and are expected to be independent and willing enough to design and plan their own specialized activities to be conducted outside the institute. Absence from Japanese-language classes is not possible.

● Program Flow

Program Schedule : 5-month course		Term 1			Term 2		
		Fundamental Japanese Proficiency and Japanese for Specific Purposes Networking and Specialized Activities			Specialized Activities and Activity Result Presentation Networking and Specialized Activities		
		July	August	September	October	November	December
Japanese	Required Subjects	Integrated Japanese Presentation Japanese for Specialized Activities	Intensive Specialized Activities I	★ Test	Integrated Japanese Presentation	Intensive Specialized Activities II	★ Test
	Elective Subjects	Kanji & Kanji-based Voc. Conversation & Interview Computer etc.			Kanji & Kanji-Based Voc. Academic Writing Specialized Reading etc.		
	Presentation	Specialized Activities: Plan & Report Vocabulary List			★ Presentation		
		Consultation for Japanese Learning		Tutorial		Feedback and Advice	
Activity Support	Individual Activity Support	Activity Support : Expense Support for Specialized Activities					
Culture and Society Program	Viewing Performing Arts Culture-Experience Study Tour/Visit Life in Japan Exchange	Bunraku Cultural Program 1, 2 NDL in Kansai Nichibunken Home Visit	Intensive Specialized Activities I	★ Presentation	Cultural Program 3 Noh & Kyogen Elementary School Visit etc.	Intensive Specialized Activities II	★ Final Presentation
		Conversation Partner					

Example of Class Schedule (Term1)

	MON	TUE	WED	THU	FRI
1 (9:00-9:50)	Integrated Japanese				Tutorial / Socio- Cultural Program / Independent Study
2 (10:00-10:50)					
3 (11:00-11:50)	Kanji· Kanji-based vocabulary	Kanji· Kanji-based vocabulary	Assembly	Kanji· Kanji-based vocabulary	
4 (13:20-14:10)	Conversation & Interview	Presentation	Preparation for Specialized Activities	Nihongo Café	
5 (14:20-15:10)			Computer	Specialized Reading	
6 (15:20-16:10)				Specialized Reading	

Example of Class Schedule (Term2)

	MON	TUE	WED	THU	FRI
1 (9:00-9:50)	Integrated Japanese				Socio- Cultural Experience Program / Independent Study
2 (10:00-10:50)					
3 (11:00-11:50)	Kanji· Kanji-based vocabulary	Kanji· Kanji-based vocabulary	Assembly	Kanji· Kanji-based vocabulary	
4 (13:20-14:10)	Specialized Reading/ Tutorial	Academic Writing	Presentation	Tutorial/ Independent Study	
5 (14:20-15:10)	Specialized Reading/ Tutorial			Tutorial/ Independent Study	

 : Compulsory Subjects

At the end of the course, a final presentation is given in Japanese. The presentation consists of an oral or written report regarding independent research themes and specialized activities. This final presentation displays the results of the intensive course and specialized activities conducted during the 5-month period.

For this final presentation, participants are expected to create their own PowerPoint graphics and introduce information in an organized manner. When composing a written report, participants present their research through an appropriate form of writing and logical development. Through these expressive activities, participants cultivate the ability to logically explain their independent research themes and specialized activities.