

国際交流基金



THE JAPAN FOUNDATION 2017-2018
ANNUAL REPORT



JAPAN FOUNDATION 

JAPAN FOUNDATION 

Cultivating friendship and ties between Japan and the world

Through culture, language and dialogue, the Japan Foundation creates global opportunities to foster friendship, trust and mutual understanding.

The Japan Foundation is Japan's only institution dedicated to carrying out comprehensive international cultural exchange programs throughout the world. The three major focuses of our activities are Arts and Cultural Exchange, Japanese-Language Education Overseas, and Japanese Studies and Intellectual Exchange. The Japan Foundation has a global network consisting of the Tokyo Headquarters, the Kyoto Office, two affiliated organizations (the Japan Foundation Japanese-Language Institute, Urawa; and the Japan Foundation Japanese-Language Institute, Kansai) and 25 overseas offices (including two Japan Foundation Asia Center Liaison Offices).

We are working to facilitate exchange in a variety of fields with the aim of further deepening mutual understanding and ties between Japanese people and the world.

Field

The Japan Foundation develops programs in three different fields—Arts and Cultural Exchange, Japanese-Language Education Overseas, and Japanese Studies and Intellectual Exchange.

Culture

Arts and Cultural Exchange

Coming into contact with arts and cultures from other countries generates and stimulates people's interest and empathy beyond language barriers. By introducing a wide variety of Japanese art and culture to people around the world, we bring people closer together.

Language

Japanese-Language Education Overseas

Teaching the Japanese language to people outside Japan helps to increase their interest in and understanding of Japan. We work to enhance Japanese-language learning environments around the world to provide more people with opportunities to study Japanese.

Dialogue

Japanese Studies and Intellectual Exchange

The enhancement of Japanese studies overseas will lead to deeper mutual understanding between Japan and other countries. The Japan Foundation also promotes intellectual exchange through symposiums and collaborative projects pertinent to global issues.

Approach

The Japan Foundation identifies the needs of individuals engaged in various cultural fields, and creates opportunities and supports programs and events, fostering sustained environments for cultural exchange.

PLAN

The Japan Foundation takes initiatives in planning and organizing exhibitions, stage performances and international conferences. We also coordinate programs that invite cultural leaders to Japan to foster networking and provide hands-on experiences in Japan.

SUPPORT

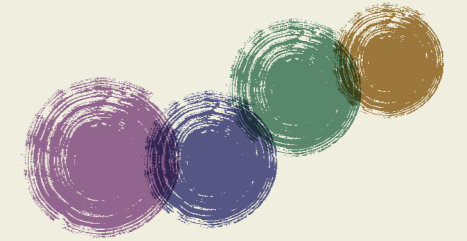
The Japan Foundation provides funding for people actively engaged in cultural exchange, and provides grants for cultural exchange by making available tools, opportunities and venues that facilitate exchange activities.

NETWORKING / INFORMATION

Gathering the information and materials needed by people active in cultural exchange and helping them to develop personal networks, the Japan Foundation is continually building the foundations of international cultural exchange and expanding its outreach.

THE JAPAN FOUNDATION

ANNUAL REPORT 2017-2018



Contents

- P1 About the Japan Foundation
- P3 Message from the President
- P5 FY2017 Overview of Operations

The Activities of the Japan Foundation

- P7 Culture: Arts and Cultural Exchange
- P13 Language: Japanese-Language Education Overseas
- P17 Dialogue: Japanese Studies and Intellectual Exchange
- P21 The Asia Center
- P26 Other Initiatives

Data

- P27 Program Activity Summaries
 - Summary of Arts and Cultural Exchange Programs
 - Summary of Japanese-Language Education Overseas Programs
 - Summary of Japanese Studies and Intellectual Exchange Programs
 - Summary of the Asia Center Programs
- P31 Financial Cooperation from the Private Sector
- P33 Financial Statements
- P36 The Japan Foundation's Global Network
- P37 Committees / Organization
- P38 Resources

Message from the President

FY2017 marked the first year of the Japan Foundation's fourth medium-term plan. During the course of this plan, we will implement programs that respond to policy challenges in the three major program areas that have served as our pillars since our establishment: Arts and Cultural Exchange, Japanese-Language Education Overseas, and Japanese Studies and Intellectual Exchange. Additionally, we will implement programs that, driven by close collaboration through global outreach, respond to changes in the international environment surrounding Japan.

The "WA Project: Toward Interactive Asia through Fusion and Harmony," launched during our previous medium-term plan, celebrated its fourth year in FY2017. Also, the total number of dispatched members under the "NIHONGO Partners" program reached 1,225 as of the end of FY2017. This means we will attain our goal of 3,000 partners after dispatching an additional 1,775 partners. Turning to arts and cultural exchange programs, we hosted various events to provide Japanese citizens with opportunities to learn about the accomplishments of the Japan Foundation's exchange programs over the years. One such event was *SUNSHOWER: Contemporary Art from Southeast Asia 1980s to Now*, a contemporary art exhibition held in Tokyo to commemorate ASEAN's 50th anniversary, attracting some 350,000 visitors. With an eye toward the medium-term plan's final year in 2020, we are preparing to showcase the culmination of the Asia Center's programs in Japan and Southeast Asia, one aim of which is to further deepen exchanges in the future.

In May 2016, Japanese Prime Minister Shinzo Abe and then French President François Hollande agreed to hold "Japonismes 2018: les âmes en resonance" as a major event for showcasing Japanese art and culture in Paris and other parts of France to celebrate 160 years of friendly relations between the two countries.

Preparations for this event were carried out in FY2017 under the coordination of the Secretariat for Japonismes 2018, which was set up within the Japan Foundation. More than 60 official projects were decided in areas such as exhibitions, performances, films and lifestyles, based on discussions at the Japonismes 2018 Comprehensive Promotion Board chaired by Prime Minister Abe and on coordination by the intergovernmental Japan-France Steering Committee on Japonismes 2018.

The Japan Foundation also held other programs in line with its purpose of fostering a favorable international environment. These included holding the Japan Festival Support Program in the United States and four other countries, providing 908 Japanese TV programs for broadcast in 101 countries and regions and convening Japanese film festivals in 36 cities in 12 countries under the Asia-Pacific Gateway Initiative.

Meanwhile, programs for developing human resources and organizations serving as bridges between Japan and overseas countries over the long term continued to be an important undertaking for us. We steadily promoted these with the aim of fostering harmonious foreign relations, another core purpose of the Japan Foundation. The programs include Japanese-Language Education Overseas, Japanese Studies and Intellectual Exchange and grassroots exchanges between citizens.

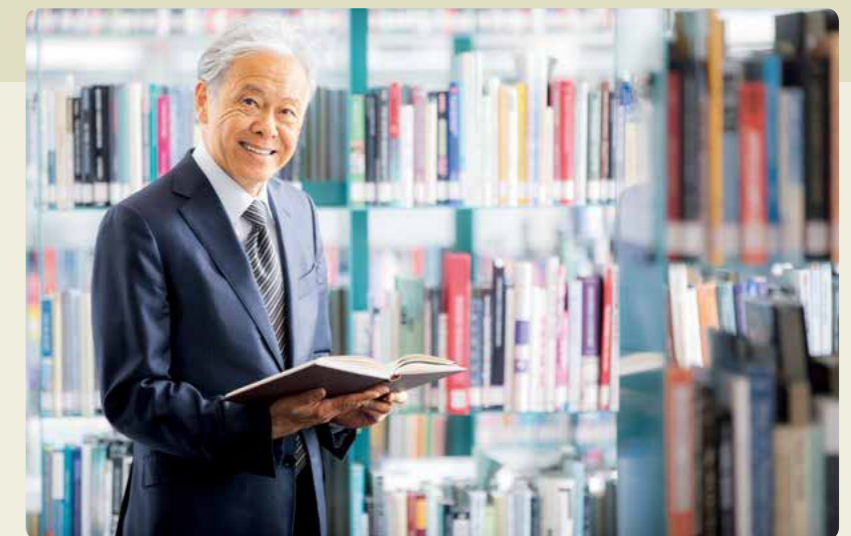
As part of our efforts to help establish the bedrock for Japanese-language education programs—such as by creating curriculums and developing young teachers—we dispatched specialists to 120 posts in 41 countries. In addition, we produced learning tools such as the *Marugoto* coursebook based on the JF Standard for Japanese-Language Education and the *Minato* e-learning platform.

The Japan Foundation also worked to nurture the next generation of scholars in Japanese studies and strengthen international collaboration through organizations such as the East Asian Consortium of Japanese Studies, which is the first Japanese studies research network organization for the East Asian region, as well as the Association for Asian Studies in the United States and the European Association for Japanese Studies.

In the Long-Term Exchange Program for Chinese High School Students, we invited 61 students to Japan for 11 months and also implemented grassroots exchanges that included dispatching 13 grassroots exchange coordinators to the U.S. Midwest and South.

Japan's culture is attracting growing attention from overseas in the run-up to the 2020 Tokyo Olympic and Paralympic Games. As an institution dedicated to carrying out international cultural exchange, the Japan Foundation passionately pursues its diverse endeavors to live up to the expectations of people in Japan and overseas, and to fulfill its mission of "Cultivating friendship and ties between Japan and the world." We sincerely appreciate your continued understanding and support.

Hiroyasu Ando
President
The Japan Foundation
October 2018



FY2017 Overview of Operations

In FY2017, the Japan Foundation continued to undertake a variety of programs, mainly in its three major program areas of Arts and Cultural Exchange, Japanese-Language Education Overseas, and Japanese Studies and Intellectual Exchange.



PHOTO: Chng Shi P'ng

Culture

Arts and Cultural Exchange

The Japan Foundation implemented major cultural programs to convey the diverse charms of Japanese culture to mark such diplomatically significant milestones as the 45th anniversary of the normalization of diplomatic relations between Japan and China, the 150th anniversary of the establishment of diplomatic relations between Japan and Spain, the 60th anniversary of the Japan-India Cultural Agreement coming into force and the 120th anniversary of the arrival of the first Japanese immigrants to Cuba. These programs were closely tailored to local needs and ranged from traditional performing arts to contemporary art, dance and films.

In the run-up to “Japonismes 2018,” a major Japanese cultural event in France in FY2018, we engaged in full-fledged preparations for more than 60 official programs in various areas such as exhibitions, performances, films and lifestyles. As prelude events, the Japan Foundation presented two exhibitions, a contemporary architecture exhibition and a contemporary art exhibition at Centre Pompidou-Metz. These events were highly acclaimed and attracted approximately 190,000 people.

The Japan Foundation also flexibly implemented cultural programs in a wide range of regions to enable people around the world to enjoy Japanese culture. These included holding traveling exhibitions and film screenings, participating in international book fairs and providing TV programs to overseas broadcasters via the Program for Japanese Broadcasting Abroad.

Regarding the China Center, we invited a total of 61 Chinese high school students to Japan for 11 months through the Long-Term Exchange Program for Chinese High School Students. We also established new centers for “Face-to-Face Exchanges” in Shanxi Province and in Guizhou Province, bringing the total number of such centers in China to 15. These centers for “Face-to-Face Exchanges” serve as key venues for promoting exchanges and fostering a deeper understanding of Japan among young people in China.



Language

Japanese-Language Education Overseas

In FY2017, we continued efforts toward expanding Japanese-language education at the secondary education level, mainly in Asia and Europe, and also implemented initiatives for supporting the activities and networking of Japanese-language education institutions around the world.

With the aim of providing advice on creating curriculums and teaching materials, training teachers locally and supporting Japanese-language classes, we dispatched Japanese-language specialists to 120 posts in 41 countries and also sent 20 young Japanese-language teachers (J-LEAP) to the United States and thereby enhanced Japanese-language education in overseas countries.

The Japan Foundation also published Intermediate 2 (B1) in the *Marugoto: Japanese Language and Culture* series of coursebooks based on the JF Standard for Japanese-Language Education and expanded the use of this series to 53 countries and regions. We also enhanced user convenience for our *Minato* Japanese-language e-learning platform by making courses available in a wider range of foreign languages and expanding content. As a result, the number of countries where this platform is used on a registered-user basis expanded to 169 countries and regions. In this way, we provide numerous learners throughout the world with high-quality Japanese-language education.

Meanwhile, the number of applicants in Japan and overseas for the Japanese-Language Proficiency Tests (JLPT) surpassed one million for the first time since the test began in 1984, as interest in Japanese-language learning rises and the base of Japanese-language scholars widens. Also, as a response to policy-related requests, the Japan Foundation implemented preparatory pre-arrival Japanese-language training for nurses and certified care workers based on bilateral Economic Partnership Agreements (EPAs). The total number of persons who pass the nursing and care worker national examinations is increasing.



Dialogue

Japanese Studies and Intellectual Exchange

In FY2017, the Japan Foundation focused on developing young people and next-generation scholars and on strengthening international collaboration. We promoted collaboration transcending countries and regions through support for the East Asian Consortium of Japanese Studies, the first Japanese studies research network organization for the East Asian region, as well as support for assisting with travel grants to enable young researchers to attend the Annual Conference and the AAS-in-ASIA conferences of the Association for Asian Studies (AAS), and support for the European Association of Japanese Studies (EAJS).

One Chinese researcher who participated in a program that invites young Chinese intellectuals to Japan wrote about his observations of Japan's judicial system and various regions of Japan on his personal mini-blog with one million followers and received a total of eight million hits, which had large and far-reaching effects in promoting a deeper understanding of Japan in China. Also, under the “Grant Program for Social Science Research and Education on Contemporary Japan,” which began in FY2015, we supported activities by principal educational institutions in the United States, the United Kingdom, France and Australia that promote a deeper understanding of and strengthen communication about contemporary Japan, and this program earned high acclaim. As for the Center for Global Partnership (CGP), the Abe Fellowship Program jointly operated since CGP's establishment held the Abe Fellows Global Forum with the participation of past fellows in three U.S. cities based on the themes of climate change and the world trading system. We also invited prominent conservative intellectuals, whose influence has grown following the start of the Trump Administration, to participate in opinion exchanges with Japanese researchers and business persons and hold lectures as we promoted dialogue between the Japan-U.S. intellectual communities.



The Asia Center

Initiatives associated with the new Asian cultural exchange policy “WA Project: Toward Interactive Asia through Fusion and Harmony” entered their fourth year in FY2017 and the “NIHONGO Partners” program has sent approximately 600 partners to 10 countries in Southeast Asia as well as China and Taiwan. The “NIHONGO Partners” program has enabled encounters with roughly 140,000 students through Japanese-language lessons at local junior high schools, high schools, and universities and helped introduce Japanese culture to some 280,000 people mainly via extracurricular activities and events.

With regard to our bilateral arts and cultural exchange programs, *SUNSHOWER: Contemporary Art from Southeast Asia 1980s to Now*, an exhibition celebrating the 50th anniversary of ASEAN, attracted around 350,000 people while “The Japanese Film Festival (JFF): Asia-Pacific Gateway Initiative” held Japanese film festivals in 36 cities throughout 12 countries, drawing around 120,000 attendees. Meanwhile, the Asia Center actively initiated programs in a variety of fields of film, performing arts, visual arts, sports and intellectual and grassroots exchange that included Asian youth leader workshops; exchange and joint production in street dance and theater; as well as soccer and judo exchange. Such efforts saw the participation of 1,410,000 people in more than 460 programs and helped drive significant progress toward the goal of fundamentally strengthening cultural exchange between Japan and the rest of Asia.



Culture

Arts and Cultural Exchange

Coming into contact with arts and cultures from other countries generates and stimulates people's interest and empathy that overcomes differences in language. By introducing a variety of Japanese arts and culture to people around the world, we bring people closer together.



FY2017

1,506,251

attendees and participants in projects



Presenting Japan's Diverse Arts and Culture Overseas

We carry out numerous projects to introduce to people around the world the diverse charms of Japanese culture, from traditional performing arts to contemporary arts, including performances, exhibitions, translation and publication, film screenings and television broadcasts. We also engage in activities such as dispatching and inviting experts as well as holding workshops for human resources development and networking in arts and culture.

PHOTO : Kike

Japan-Cuba Collaboration Programs in the Visual and Performing Arts

In commemoration of the 120th anniversary of the arrival of the first Japanese immigrants to Cuba, the Japan Foundation presented a contemporary art exhibition and dance performances by Japanese and Cuban artists. For the contemporary art exhibition, we held *Going Away Closer: Japan-Cuba Contemporary Art Exhibition* with the participation of Japanese and Cuban curators and artists. The dance performances featured *One thousand years after*, a new work choreographed and directed by Saburo Teshigawara/KARAS and performed by dancers from the Cuban dance company Acosta Danza.



PHOTO : Yuris Nórico

One thousand years after



Art exhibition:
Going Away Closer: Japan-Cuba Contemporary Art Exhibition



© Luis Joa

Atsuko Mochida, *Further you go, you may fall or you may learn*, 2018

Winning School in “Shodo Performance Koshien” Sent to the National Cherry Blossom Festival in the United States

We dispatched three groups of artists from Japan (Akiko Yano, T.M.Revolution and the Fukuoka Prefectural Yahata Chuo High School Japanese Calligraphy Club) to perform at the opening ceremony of the National Cherry Blossom Festival, the largest cherry blossom festival in the United States held annually in Washington, D.C. These artists captivated the audience during their performances. The Fukuoka Prefectural Yahata Chuo High School Japanese Calligraphy Club was the winning school at the 10th “Shodo Performance Koshien,” a dynamic calligraphy performance competition, and earned favorable acclaim as they interacted with the citizens of Washington, D.C. through exchanges with local high school students. Their display booth provided hands on experience with calligraphy at an art museum event.



© 2018 Embassy of Japan in the United States of America

Introducing Japanese Culture in Malaysia

To celebrate the 60th anniversary of Japan-Malaysia diplomatic relations, the Japan Foundation held events in Malaysia that included the Noh play *Funa-Benkei* by Noh actors led by Soichiro Hayashi, a Kanze-school Noh actor; a calligraphy demonstration by Sisyu; and Rakugo performances by Diane Kichijitsu. Prior to the Noh performance, the actors gave an explanation of the performance, *Funa-Benkei*, which assisted the audience in enhancing their understanding of Noh. Following the performance, the audience gave the actors a rousing cheer during the curtain call.



PHOTO: Ch'ng Shi P'ng



© One Frame Story

Collaborative Performances of Nihon Buyo and Indian Traditional Performing Arts

In commemoration of the Year of Japan-India Friendly Exchanges (the 60th anniversary of the Cultural Agreement coming into force), Makoto Kuriya/Creative Jazz Ensemble Japan led by Makoto Kuriya and the traditional Japanese music group WASABI held concerts in India. Also, the Nihon Buyo (Japanese traditional dance) group Goyokai gave a stage performance in collaboration with traditional Indian dancers and musicians. These performances intensively conveyed Japan's diverse appeal in these fields and added excitement to the Year of Japan-India Friendly Exchanges.



Taiko Performing Arts Group Kodo Gives First Egypt Performance

Kodo held taiko (traditional Japanese drum) performances at the Cairo Opera House and Alexandria Opera House in Egypt. The group also held workshops at cultural facilities in both cities that allowed people to directly experience the appeal of Japanese drums. A total of 12 local public schools were invited to the performance and workshop in Cairo to promote a deeper understanding of Japanese culture and arts.

57th International Art Exhibition – La Biennale di Venezia

The Japan Foundation organized the Japan Pavilion at the 57th International Art Exhibition – La Biennale di Venezia. The exhibition at the Japan Pavilion featured a solo exhibition of Takahiro Iwasaki titled *Turned Upside Down, It's a Forest* held under the curation of Meruro Washida. Iwasaki displayed seven three-dimensional works that included *Reflection Model (Ship of Theseus)* and *Out of Disorder (Mountains and Sea)*. These works, which made use of everyday items such as towels, books and plastic refuse as materials, earned favorable acclaim and over 440,000 people visited the Japan Pavilion during the exhibition period.



Photography by Keizo Kioku



Japanorama—New Vision on Art Since 1970

The Japan Foundation in collaboration with Centre Pompidou-Metz presented the art exhibition *Japanorama—New vision on art since 1970* that introduced Japanese contemporary art and visual culture since 1970. The exhibition presented over 350 works by some 100 artists and groups and was held in conjunction with an architecture exhibition, *Japan-ness*, as preludes for the “Japonismes 2018.” Serving as a core program for *Japanese Season* held at Metz, *Japanorama* spurred interest in Japanese society and culture and attracted more than 100,000 people during the exhibition period.

ASEAN Orchestra Support Project

Seeking to contribute to the enhancement of local professional orchestras' performing techniques and managerial practices, we dispatched professional musicians from Japan to Vietnam for long-term support. In addition, orchestra management staff were invited from Indonesia to undergo short-term training with orchestras in Japan. Experts were also sent to the Myanmar National Symphony Orchestra on four occasions during the year to provide on-site instruction and concerts were held in Yangon and Naypyidaw.



mASEANa Project

The Japan Foundation and DOCOMOMO Japan are co-organizing this project under which professionals from Japan and Southeast Asia are surveying and documenting inventories of modern architecture that are at risk of being destroyed or lost in Southeast Asia. During FY2017, we implemented surveys and documented inventories in Jakarta, and held an international conference based on the theme “Modern Life and Urbanization: modern Architecture in Japan and Southeast Asia.”



The China Center



The China Center works to enhance mutual understanding between Japan and China by deepening cultural exchange primarily between youths, who play a key role in the future of the two countries, and by providing them with opportunities to experience each other's cultures and lives in each other's countries. 心連心 ("Heart to Heart" in Chinese)—this is our slogan. The China Center marked its 10th anniversary in 2016, and going forward, it will continue to implement projects that emphasize interactivity and collaboration, and seek to build deeper, longer-term emotional ties.

Long-Term Exchange Program for Chinese High School Students



The China Center provides the opportunity for Chinese high school students to experience the lifestyles of typical Japanese high school students for an 11 month period. In FY2017, 31 students of the 11th session returned to China in July and 30 students of the 12th session arrived in Japan in September, bringing the total number of participants to 390. Of the 360 students who have participated in the program up to the 11th session, 120 have returned to Japan to study at Japanese universities or postgraduate schools, and 31 are now working for Japanese companies. The program is steadily fostering personnel capable of bringing Japan and China closer together.

The 30 students of the 12th session arrived in Japan in September 2017 and are experiencing life as exchange students in high schools across the country.



Opening of the Japanese Film Festival in Shanghai



Guangzhou Japanese Film Screening Week

Commemorating the 45th Anniversary of the Normalization of Diplomatic Relations between Japan and China Japan-China Film Exchange Program

In commemoration of the 45th anniversary of the normalization of diplomatic relations between Japan and China, the Japan Foundation carried out Japan-China exchanges through films. Starting with the first-ever *Guangzhou Japanese Film Screening Week* in May, the Japan Foundation held *Japanese Film Festival* in Shanghai, Shenzhen, and Kunming in December and *the Chinese Film Festival 2018* in Tokyo, Osaka, and Nagoya in March 2018. We invited film directors and actors from both Japan and China, which attracted an audience totaling more than 20,000 people and helped to deepen exchanges between the two countries.



Screenwriter Kosuke Mukai gave a talk at the Japan Foundation Touring Film Programme 2018 (U.K.), a program that introduces Japanese films.

Japanese Film Screenings

We held 94 Japanese film festivals and film screenings in 67 countries and regions, and supported 11 Japanese film festivals in 8 countries and regions.

Introducing Japanese Television Programs

We implement projects for introducing Japanese television programs that promote an understanding of Japan in countries and regions where there is difficulty in broadcasting Japanese content. In FY2017, 908 Japanese television programs, including dramas, anime, variety shows, films and documentaries, were broadcast in 101 countries and regions.



NHK/Asa ga Kita (Here Comes Asa!)



Setonaikai Broadcasting Corporation/Kitemasu. BONSAI (The World of BONSAI~Japanese Art of Sculpting Nature~)



Yomiuri-TV Enterprise Ltd./Yama no Susume (Encouragement of Climb) First Season/Second Season

Centers for "Face-to-Face Exchanges" in China

Centers for "Face-to-Face Exchanges" have been established in universities and other institutions in regional cities around China where opportunities to meet Japanese people and gain information about Japan are relatively limited. The centers provide venues where visitors can experience contemporary Japanese culture by browsing, viewing and listening to the latest magazines, books, visual materials and other contents from Japan. Furthermore, a wide variety of Japan-China exchange events are held through the cooperation of Japanese nationals and local Chinese citizens.

Training was held in October 2017 in Xining for staff in charge of practical business at Centers for "Face-to-Face Exchanges."



Students from Kansai University and Yunnan Normal University planned and operated "Journey Around Osaka" as an event that introduced Kansai culture at the Center for "Face-to-Face Exchange" in Kunming.

Network Strengthening Programs

We implement a variety of programs emphasizing collaborative work with the aim of building networks among young people who will be the future bearers of Japan-China exchanges. In FY2017 as well, we supported the university student cultural exchange project in which Chinese and Japanese university students collaborate in planning, organizing and holding events that introduce Japanese culture, as well as "Read/Lead Asia," a training camp-style exchange program in which Japanese and Chinese university students visit companies and engage in discussions using business and job searches as a pathway. We also operate the bilingual Japanese-Chinese "Heart to Heart" website.



Language

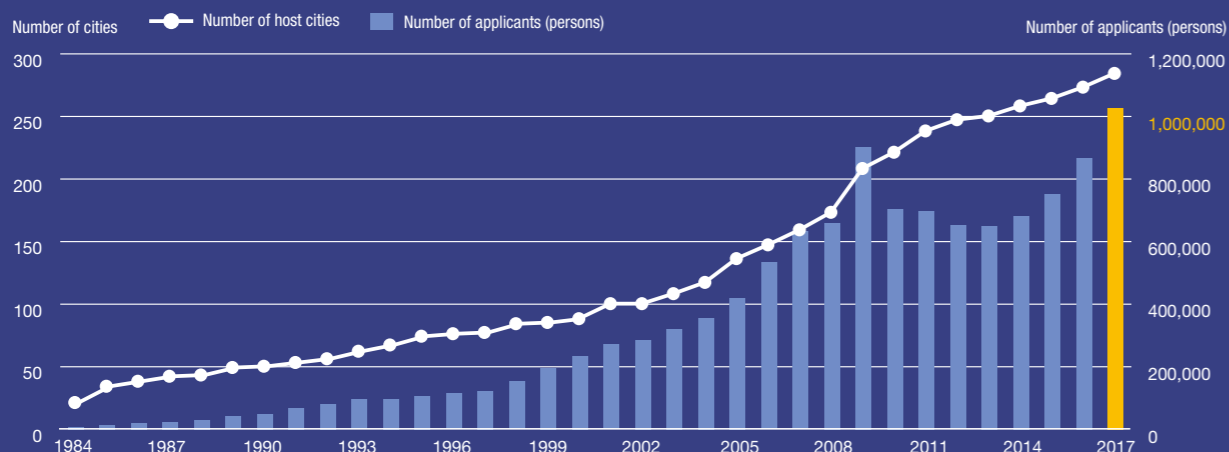
Japanese-Language Education Overseas

Teaching the Japanese language to people outside Japan helps to increase their interest in and understanding of Japan. We work to enhance Japanese-language learning environments around the world to provide more people with opportunities to study Japanese.

2017 Japanese-Language Proficiency Tests **1,027,111** applicants

286
host cities

Japanese-Language Proficiency Test: Number of Applicants and Host Cities Worldwide



Establishing Environments for Japanese-Language Education Overseas

To ensure that high-quality and stable Japanese-language education is widely implemented overseas, the Japan Foundation collaborated with local government agencies and principal Japanese-language education institutions taking into consideration the circumstances of each country and region and mainly undertook the following programs to promote the establishment of Japanese-language education environments in each country and region.

Assistance for Activities of Japanese-Language Education Organizations, Support for Network Formation

We provide assistance for activities that help spread the Japanese language such as Japanese-language courses, purchase of teaching materials and speech contests through local educational organizations beginning with JF Nihongo Network (Sakura Network) Members*.

*Sakura Network Members are core Japanese-language educational institutions/ organizations located in each country. As of March 31, 2017, the membership included 288 institutions in 92 countries/regions.



Sri Lanka: Assistance for "The Japanese Day 2017" event at Royal College Panadura

Implementation of Training Programs for Japanese-Language Teachers and Learners in Each Country

We invited Japanese-language teachers and learners from overseas to the Japan Foundation Japanese-Language Institute, Urawa and the Japan Foundation Japanese-Language Institute, Kansai for training to enhance the skills of these human resources who will handle Japanese-language education overseas.



Training for Japanese-language learners at the Japanese-Language Institute, Kansai

The Japan Foundation Japanese-Language Institute, Urawa

The Japan Foundation Japanese-Language Institute, Urawa, was established in 1989 to comprehensively provide support for Japanese-language education overseas. Overseas Japanese-language teachers are invited for training programs on the Japanese language, Japanese-language teaching methods and Japanese culture. It also develops and provides teaching materials and carries out programs to disseminate the JF Standard for Japanese-Language Education.



Short-Term Training Program for Teachers of the Japanese Language (Summer) held at the Japanese-Language Institute, Urawa

The Japan Foundation Japanese-Language Institute, Kansai

The Japan Foundation Japanese-Language Institute, Kansai was established in 1997 as a Japanese-language training facility providing support to Japanese-language learners from overseas. Foreign service officers, public officials and Japan specialists are invited to the institute from various countries to receive training in specialized Japanese that is useful for their work duties and research; moreover, the institute has training programs for learners from overseas. It also promotes the development of e-learning materials such as online Japanese courses, Japanese learning websites and apps based on the know-how it acquires through the training programs.

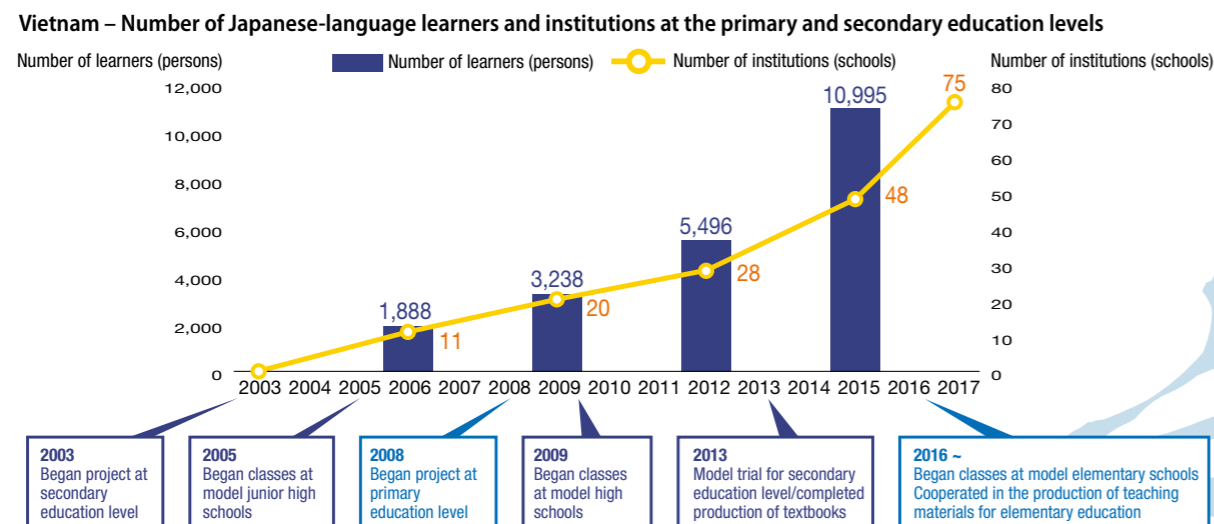


Japanese-Language Program for Specialists held at the Japanese-Language Institute, Kansai

Encouragement of Japanese-Language Education and Learning

Example of Initiatives by Country:

Vietnam – Spreading Japanese-Language Education at the Primary and Secondary Educational Levels



The Japan Foundation has commenced support in response to the Vietnamese government's plan for introducing Japanese-language education as a first foreign language at the secondary education level in Vietnam. In collaboration with Vietnam's Ministry of Education and Training, the Japan Foundation is implementing a variety of measures that include dispatching Japanese-language specialists to cooperate in curriculum development and textbook production; inviting Japanese-language teachers to Japan for training; and holding local seminars in Vietnam. As a result, the number of Japanese-language learners at the secondary education level exceeded 10,000 and as of October 2017, the number of schools providing Japanese-language education using government-designated textbooks has expanded to

70 schools (42 junior high schools and 28 high schools).

At the primary educational level as well, in September 2016, classes on Japanese language as a first foreign language commenced on a trial basis at a total of five elementary schools in Hanoi and Ho Chi Minh City.

As in the previous fiscal year, during FY2017 a team consisting of teachers from the University of Languages and International Studies, Vietnam National University, Hanoi, who were appointed by Vietnam's Ministry of Education and Training, and Japanese-language specialists from the Japan Foundation Center for Cultural Exchange in Vietnam, produced textbooks for each school-year level and carried out teacher training.

Example of Initiatives by Country:

United Kingdom – Expanding Japanese-Language Education to Primary Education

In 2014, foreign language education for third to sixth grade students at public primary schools in England became compulsory. In response, the Japan Foundation developed teaching materials for primary education and has carried out a variety of initiatives to encourage the adoption of a Japanese-language curriculum. In September 2017, we commenced courses on *Minato*, an online Japanese-learning platform, for persons involved in primary and secondary education. In March 2018, we co-organized the Coventry Young Ambassador Japan Conference together with a local primary school in Coventry in central England. Approximately 250 students from 29 primary schools attended this event and enjoyed their first-hand experiences with the Japanese language and Japanese culture and sports.



Dispatch of Japanese-Language Specialists

Example of Initiatives by Country:

France – Debut of the Regular Japanese-Language Teachers by the New Certification Examination



The Japan Foundation dispatches Japanese-language specialists to overseas educational institutions. In France, a Japanese-language category was newly added to the regular teacher certification examination for secondary education. In response, led by Japanese-language specialists dispatched by the Japan Foundation, we held Japanese-language teacher training sessions as well as

internships for students majoring in Japanese language and also provided training in Japan as we worked to prepare for the implementation of this examination. In June 2017, three persons passed the new examination in the Japanese-language category and then obtained the certification of the regular Japanese-language teachers in France at the secondary education level.

Pre-Arrival Japanese-Language Training Based on EPAs

The Japan Foundation implemented six-month preparatory pre-arrival Japanese-language training for 649 nurses and certified care worker candidates who will be accepted by Japan based on bilateral Economic Partnership Agreements (EPAs) between Japan and Indonesia and the Philippines, respectively. Following their arrival in Japan, the candidates will receive an additional six months of Japanese-language training, after which they will be assigned to hospitals and caregiving facilities to work with the intention of passing a national examination.



Enhancing Overseas Japanese-Language Teaching Methods and Proficiency Assessments of Japanese-Language Learners

To further spread Japanese language learning, it will be important to promote the international standardization of teaching content that raises convenience for Japanese-language learners and to upgrade proficiency assessments to help encourage learning. Accordingly, we implemented the following programs.



Examinees in Yangon, Myanmar



Holding of Japanese-Language Proficiency Test

Launched in 1984, the JLPT is the world's most popular Japanese test. In FY2017, tests were held in eight additional countries, including Sweden, Belgium, Georgia, Slovenia, Belarus, Uruguay, Sudan and Morocco, and four additional cities that include Weihai (China), Semarang (Indonesia), Hue (Vietnam) and Portland (U.S.). This brings the total number of testing locations to 286 cities in 81 countries/regions, including Japan. Also, the number of applicants reached 1,027,111 in FY2017, exceeding one million for the first time since the JLPT's launch in 1984 (887,380 took the test). A cumulative total of 11,867,636 people have applied for the test.

Development and Operation of e-Learning

We worked to upgrade content by adding Elementary 1 (A2) to the *Marugoto* Japanese online course, which is the main course of the Japanese language learning platform, JF Japanese e-learning *Minato*. We also made *Minato* available in a wider choice of languages by adding Spanish, Chinese, Indonesian, Thai and Vietnamese languages. As a result, the number of users has increased to 33,031 as of the end of FY2017. Moreover, we added the Elementary 2 (A2) level to *MARUGOTO+* (*MARUGOTO Plus*), a website for studying Japanese language and Japanese culture based on the coursebook *Marugoto: Japanese Language and Culture*.



MARUGOTO+ Elementary 2 (A2)



JF Japanese e-Learning *Minato*

Disseminating Information about Japanese-Language Teaching Methods and Providing Teaching Materials

To promote the JF Standard for Japanese-Language Education, we disseminated information through seminars, workshops, websites and SNS in Japan and overseas. We published the coursebook based on the JF Standard for Japanese-Language Education, *Marugoto Intermediate 2 (B1)*, and held seminars to promote the usage of the *Marugoto* series. We also provided supplementary materials for the books in multiple languages and supported local publishing. Furthermore, we convened a symposium based on the theme of e-learning as a project to commemorate the 20th anniversary of the Japan Foundation Japanese-Language Institute, Kansai, and also distributed information about the use of e-learning.



Implementing Surveys on Overseas Japanese-Language Education and Learning and Providing Related Information

To ascertain the current state of overseas Japanese-language education, every three years the Japan Foundation implements the Survey on Japanese-Language Education Abroad on a global basis with the cooperation of our overseas offices, Japan's overseas diplomatic missions and other related agencies. In FY2017, we progressed with preparations for the newest survey scheduled to be implemented in FY2018 and created questionnaires in various languages.



Dialogue

Japanese Studies and Intellectual Exchange

The enhancement of Japanese studies overseas will lead to deeper mutual understanding between Japan and other countries. The Japan Foundation also promotes intellectual exchange through symposiums and collaborative projects pertinent to global issues.



Fellowships provided to overseas researchers (total number)



* A cumulative total of newly commenced fellowships each fiscal year since the Japan Foundation's establishment in 1972. Includes persons associated with arts and culture, Japanese-language education, and Asia Center programs.

Promoting Japanese Studies Overseas

With the aim of consolidating the foundation of Japanese studies around the world, and of supporting specialists in Japanese studies, we provide comprehensive and concentrated support to core organizations in each country/region. Our support includes international conferences, staff expansion, library acquisitions and study tours to Japan. We also work to facilitate further development of Japanese studies by strengthening scholarly networks among various countries and regions.

Japanese Studies Fellowship Giulio Pugliese (Italy)

Giulio Pugliese, a specialist in Japanese diplomacy and economic policy and one of the Japan Foundation Japanese Studies Fellows in FY2012, has been a Lecturer at King's College London since 2016. In 2017, he was awarded a Postdoctoral Fellowship from the British Academy, which paved the way for securing a Japan expert post at King's College. Pugliese has based his activities in Europe, the U.S. and Japan, and while making full use of his multilingual ability, including that of Japanese, his developing of contemporary Japanese studies with a global view and an interdisciplinary approach is sure to deserve continuous attention.



Support for Japanese Studies Organizations Syracuse University (U.S.)

In September 2017, Syracuse University, New York, established a Japanese Studies minor with support from the Japan Foundation, which includes establishing a new teaching post, inviting visiting professors and expanding the number of Japanese studies books. The symposium held on campus in the following October, featuring Hiroshima atomic bomb survivor Keiko Ogura, was widely attended by both students and local residents, and received detailed media coverage by the U.S. news media, as well as by NHK World.



Enhancement of Japanese Studies Network East Asian Consortium of Japanese Studies

The East Asian Consortium of Japanese Studies, the first Japanese studies research network organization for the East Asian region, held its Second International Conference over a three-day period from October 27, 2017 in Tianjin, China. The Japan Foundation provided support for enhancing the consortium's activities and organization through collaboration focused mainly on a next-generation panel by young researchers, as well as by dispatching author Jiro Asada to hold a special lecture on the theme of "Contemporary China and Japan."



European Association for Japanese Studies (EAJS)

Established in 1973 as Europe's first Japanese studies network association, EAJS has grown into an international organization now with over 1,400 memberships from 50 countries. The Japan Foundation provided support for the 15th EAJS International Conference in Lisbon, Portugal, where 252 panels hosted a wide range of presentations, and also supported the EAJS PhD Workshop aimed at training younger Japanese studies scholars. Further developments are expected to be achieved toward the 16th EAJS International Conference in 2020 that will be held in Ghent, Belgium.

Intellectual Exchange

In order to provide opportunities for experts to engage in dialogues on global issues and topics, and to further deepen their intellectual exchanges, we support international conferences and symposiums, as well as mutual visits by public intellectuals. We seek to make a contribution toward global development and stability by promoting mutual understanding in international society, and by fostering the next generations necessary to advance future intellectual exchange.

Inviting Chinese Intellectuals to Japan

To deepen an understanding of Japan and to build an intellectual network (between Japan and China), the Japan Foundation invites influential young and mid-career researchers and intellectuals from China to Japan. In FY2017, we invited legal scholar He Bing, who used his personal mini-blog to convey various aspects of Japan to his one million followers by widely communicating his thoughts on a broad scope of topics, ranging from his observations of Japan's judicial system to everyday life in Tokyo. Meanwhile, *One Year in Tokyo*, written by author Jiang Fangzhou based on her visit to Japan when she was invited by the Japan Foundation in FY2015, has become a best seller in China and has already run to several editions.



Forming Japan-U.S.-Southeast Asian Networks Summer Institute 2017

The Japan Foundation's Summer Institute 2017 brought together 24 young researchers from Japan, the U.S., and Southeast Asia for a summer intensive training program for five days at Shonan Village in Kanagawa Prefecture. Through small-group discussions, the researchers brushed up their research skills as well as expanded networks across disciplines and countries and regions. Following this program, 22 participants visited Kesennuma, Miyagi Prefecture, for three days and deepened their understanding of the impact of the Great East Japan Earthquake and of the subsequent reconstruction.



Association for Asian Studies (AAS)

The Japan Foundation provided support that enables young Southeast Asian researchers to participate in the Annual Conference and the AAS-in-Asia conferences of the Association for Asian Studies (AAS), which is headquartered in the U.S. At the Annual Conference held in March 2018 in Washington, D.C., eight of our past support recipients and three participants in the above-mentioned Summer Institute were chosen to serve as presenters.

Center for Global Partnership (CGP)



The Japan Foundation Center for Global Partnership (CGP) was established in 1991 with the goal of fostering Japan-U.S. cooperation in tackling global issues. The center promotes dialogue and exchange between all facets of Japanese and U.S. society in order to create a solid partnership based on mutual understanding and joint Japan-U.S. contribution to the global community.



October 18, 2017, at the Asia Society Texas Center (Houston, Texas)



October 20, 2017, at the Walter H. Shorenstein Asia-Pacific Research Center, Stanford University (San Francisco, California)

Abe Fellowship Program/Abe Fellows Global Forum

The Abe Fellowship is a research fellowship program jointly operated since 1991 by CGP and the Social Science Research Council (SSRC) of the United States to support researchers and journalists involved with global-scale policy issues. To the present, the Abe Fellowship has formed a powerful community of more than 400 persons in policy and academic circles. As part of the 25th Anniversary Program begun in the previous year, the Abe Fellows Global Forum hosted three events in the United States with fellows serving as presenters. The first two focused on the theme of "Confronting Climate Change: What Can Japan and the U.S. Contribute to Creating Sustainable Societies" were held in cooperation with and at the Asia Society Texas Center in Houston and in cooperation with the Walter H. Shorenstein Asia-Pacific Research Center at Stanford University in October 2017. The third event, a public forum on the theme "Japan and the Leadership of the World Trading System," was held at Columbia University in November 2017. These events featured lively discussions and attracted numerous participants, including such noted dignitaries as George Shultz, former U.S. Secretary of State who played a key role in Japan-U.S. relations, and Michael Armacost, former U.S. ambassador to Japan.



November 10, 2017, at the Center on Japanese Economy and Business/ School of International and Public Affairs, Columbia University (New York City)

Japan-U.S. Intellectual Exchange Program

Since FY2015, in this exchange program, CGP invites leaders of diverse intellectual communities in the United States to Japan to promote networking of Japanese and U.S. intellectuals. The participants engage in dialogue with Japanese experts such as researchers, policy makers and private sector leaders and hold public lectures. In FY2017, the program invited four persons, including those who represent the school of conservative thought as well as members of the ethnic community, to promote a deeper understanding of the United States in the Trump administration era.



Julius Krein (left)
(Editor, *American Affairs*)
Period in Japan: September 13-17, 2017

Walter Russell Mead (right)
(Professor, Bard College)
Period in Japan: September 14-19, 2017
Lecture: "American Political Thought in the Trump Era"
(at Aoyama Gakuin University, September 15, 2017)



William Kristol
(Editor-at-Large, *The Weekly Standard*)
Period in Japan: December 3-10, 2017
Lecture: "American Politics in the President Trump Era"
(at The University of Tokyo, December 5, 2017)
Lecture: "American Politics in the President Trump Era"
(at Doshisha University, December 6, 2017)



Marco Davis
(Partner, New Profit philanthropy fund)
Period in Japan: March 18-24, 2018
Lecture: "Challenges of a Changing Society: Through Education, Society, Starting Businesses, and Diversity"
(at the Japan Foundation, March 22, 2018)





The Asia Center

Through interacting and collaborating in Japanese-language education, arts and culture, sports, and grassroots and intellectual exchange, the Asia Center conducts and supports collaborative initiatives with its Asian—primarily ASEAN—counterparts. The Asia Center aims to develop the sense of kinship and coexistence as neighboring inhabitants of Asia and nurture human resources who form a bridge between Asian countries.

Support for Japanese-Language Learning

Students taught (total)
349,000 students

Number of
"NIHONGO Partners" dispatched
1,225 persons

Number of events
organized/supported
1,525

Participants (total)
3,631,000 participants

Arts and Cultural Exchange

* Accumulative total from FY2014 to FY2017

Background of the Establishment of the Asia Center

The Asia Center was established in April 2014 to be the body responsible for the new Asian cultural exchange policy "WA Project: Toward Interactive Asia through Fusion and Harmony" announced by the Japanese government at the ASEAN-Japan Commemorative Summit Meeting in Tokyo in December 2013.

The Asia Center organizes and supports mutual exchange programs between Japan and other Asian communities in and around the ASEAN region. Through exchange programs and collaborative initiatives in a wide range of fields such as arts and culture, sports, and grassroots and intellectual exchange, the Center seeks to develop a sense of kinship and coexistence as neighboring inhabitants of Asia and nurture human resources who form a bridge between Asian countries.



Photo courtesy of Cabinet Public Relations Secretary

"NIHONGO Partners" to support Japanese-Language Learning

The "NIHONGO Partners" program sends native Japanese speakers to secondary schools mainly in the ASEAN region to serve as partners to local Japanese teachers and their students by providing in-class assistance and introducing Japanese culture. Over 3,000 people will be dispatched as "NIHONGO Partners" by FY2020.



Photo: Kioku Keizo Photo courtesy: Mori Art Museum, Tokyo

Arts and Cultural Exchange

The Asia Center promotes exchange programs among the people of Asia in a wide range of fields such as art, films, performing arts, sports, and grassroots and intellectual exchange. Valuing reciprocity and collaboration, and respecting the identities and diversity of each region and country, we aim to together create new cultures of Asia.

SUNSHOWER: Contemporary Art from Southeast Asia 1980s to Now The National Art Center, Tokyo and Mori Art Museum, 2017

Japanese-Language Learning Assistance

The “NIHONGO Partners” program sends native Japanese speakers to educational institutions throughout Asia to serve as partners to local Japanese teachers and their students by providing in-class assistance and introducing Japanese culture. In FY2017, 591 partners were deployed to 492 junior high schools, high schools, universities, and other learning institutes in the 10 ASEAN countries, China, and Taiwan. The “NIHONGO Partners” who returned to Japan in FY2017 fostered connections with around 140,000 students through Japanese-language lessons and introduced Japanese culture to around 280,000 students through extracurricular activities and events.

Messages from Past Participants

Mutual Communication and Learning

As a “NIHONGO Partners,” I had the chance to live close to the local community and the school, which allowed me to meet a variety of people and have different discoveries. The local teachers were constantly checking to see if I had any concerns and often invited me to join them for lunch or to socialize together. The students always greeted me with a smile, no matter where it was. What they all had in common was not just their strong interest in learning about Japan and me, but that they shared a sense of hospitality that taught me so many things. Being dispatched to the school in Thailand has given me a great insight into how interested the students are in Japanese culture and food, and just how established their culture is in terms of their respect for teachers and the elderly. It was truly a wonderful 10-month experience in which I got to impart a little knowledge about Japan while also learning a great deal about Thailand.



Masahiro Fujihara
Thailand Group 5, May 2017 – March 2018

The Joy of Becoming Immersed in the Local Community and Imparting Knowledge about Japan

As a “NIHONGO Partners,” I got the chance to conduct practical activities at educational sites such as junior high and high schools in Vietnam. Once I started to communicate a little in Vietnamese I was picking up from teachers and students, the feeling of distance started to give way. When I showed them a *sanshin*, a traditional musical instrument from my birthplace of Okinawa, to hold and explained its commonalities with Vietnamese instruments, it really stimulated their interest. I’ll never forget the time I played the *sanshin* in tune with the students’ singing. The entire experience helped me understand the importance of Japanese-language education and set me along my journey as a Japanese instructor with memories that I’ll hold dear forever.



Hiroko Kamiunten
Vietnam Group 4, August 2017 – June 2018

Conveying the Appeal of Japan to Make It Feel More Familiar

The thing I felt most after being dispatched to the local university was that for the students having a Japanese person on campus really brought familiarity to Japan and the Japanese language. The students were a little reserved at first and reluctant to use their Japanese, but gradually learned to greet me in Japanese. At the Japanese Club I set up at the university, the teachers as well as the students were all extremely pleased when I made sushi and rice flour dumplings, and wrote their names or the words they liked in kanji using a writing brush. The “NIHONGO Partners” project provided the opportunity for us to learn from each other, especially regarding the culture and customs of Japan and Cambodia. This helped me understand the joy of communicating Japanese culture to people from other countries. I hope to continue conveying the appeal of Japan overseas while placing an emphasis on learning.



Kaori Matsuoka
Cambodia Group 1, September 2016 – August 2017

Using My Experience as a “NIHONGO Partners” to Provide Support

After returning to Japan, I have been supporting candidates from Indonesia aspiring to attain national qualification to become a registered nurse in Japan by providing assistance for Japanese-language learning and preparations for the state examination based on Economic Partnership Agreements (EPAs). I myself have worked as a registered nurse and a health information manager, so I have always been interested in projects that accept candidates for foreign registered nurses and certified care workers based on EPAs. After interacting with people in Indonesia and experiencing local life as a “NIHONGO Partners,” I can better provide guidance while deepening friendships with Indonesian nurses. I hope to use the experiences I gained through this program to continue offering support and be an understanding mentor for them.



Tomiko Shimada
Indonesia Group 4, October 2015 – March 2016

Arts and Cultural Exchange

Our mutual exchange program aims to build a network of leading figures that include artists, cultural leaders and researchers from Japan and Asia and to promote mutual understanding among citizens in the Asia region. In FY2017, a total of 466 projects that we either hosted or funded were run, drawing over 1.4 million participants.



Photo: Kioku Keizo Photo courtesy: Mori Art Museum, Tokyo

Felix Bacolor, *Stormy Weather*, 2009/2017



©Art Vietnam Gallery



©2017 TIFF



SUNSHOWER: Contemporary Art from Southeast Asia 1980s to Now

In 2017, celebrating the 50th anniversary of ASEAN, the National Art Center, Tokyo, Mori Art Museum, and the Japan Foundation Asia Center co-hosted *SUNSHOWER: Contemporary Art from Southeast Asia 1980s to Now*. The exhibition introduced contemporary art from Southeast Asia from nine different perspectives. It aimed to showcase the dynamic development of the region and its multifaceted culture based on two and a half years of field studies by 14 curators from Japan and ASEAN countries. A total of 350,000 people visited the venues during the exhibition period.

Condition Report

“Condition Report” is a collaborative art project by curators from Japan and Southeast Asian countries. In its third year in FY2017, 12 participating curators held 12 exhibitions and events in 11 cities from seven countries. Participants created networks through the collaboration and gained experience in planning exhibitions, with the project being rolled out not only in the capital cities but also in provincial cities in each country.

Film Culture Exchange Projects with the Tokyo International Film Festival

The Asia Center teamed up with the Tokyo International Film Festival, one of the largest international film festivals in Asia, inviting 81 members of the film industry, figures involved in overseas film festivals, journalists and film buyers and sellers for the opportunity of building networks with members of the Japanese film industry. In addition, special screenings of 13 films by young directors from Southeast Asia in the “CROSSCUT ASIA” section showcasing Asian films attracted some 2,000 people to the event which also included a symposium and other related programs.

The Japanese Film Festival (JFF): Asia-Pacific Gateway Initiative

With the aim of creating a comprehensive platform for the Japanese film industry that attracts potential clients, the Asia Center held Japanese film festivals in 36 cities throughout 12 countries, namely the 10 ASEAN countries, India, and Australia, in FY2017. The festivals sought to showcase the diversity of Japanese films and convey the beauty of Japanese culture through the films. Some 100 films, mainly the latest Japanese films, were shown a total of 771 times, attracting around 120,000 viewers.



Yosuke Kamiyama / DDA2018

DANCE DANCE ASIA—Crossing the Movements

The collaborative project performed three short dance pieces, created last fiscal year, in Manila and Hanoi in April 2017. One of them, a work from a director/choreographer from the Philippines, was made into a longer feature dance and performed in Tokyo in March 2018 together with two new shorter works produced by directors/choreographers from Japan and Indonesia. The works, which fused the diverse range of expressiveness of the up-and-coming multinational dancers with exceptional technique and music, were enjoyed by a combined 4,000 people in Manila, Hanoi and Tokyo.



Copyright Hideto Maezawa

Tokyo Performing Arts Meeting (TPAM) in Yokohama 2018

Tokyo Performing Arts Meeting (TPAM) in Yokohama, a platform for contemporary performing arts with the longest history in Asia, was held over a nine-day period in February 2018. It included a total of 11 programs, 73 performances and three exhibitions such as *One or Several Tigers* by Ho Tzu Nyen (Singapore) and *Internship* by Tetsuya Umeda, drawing around 4,500 people. TPAM Fringe, an open-call program, involved 56 groups, 73 programs and 261 performances, attracting some 18,000 people, while the TPAM Exchange program saw 5,453 participants in group meetings and other events. During the TPAM period, around 40 young performing art presenters mainly from Asia were invited to Japan with the aim of expanding and strengthening the professional network for future collaboration.

ASIAN ELEVEN: Football Exchange Project with JFA and J.League

The Asia Center, Japan Football Association (JFA), and Japan Professional Football League (J.League) have worked together to foster football talents and promote mutual understanding among youths in Japan and ASEAN nations through football. Some 169 football-related practitioners were invited and 44 coaches were dispatched. A total of 967 people took part in football clinics that are conducted in cooperation with J.League in the 10 ASEAN countries.



Judo Exchange Program "JAPAN-ASEAN JITA-KYOEI PROJECT"

With the aims of strengthening networks in Japan and ASEAN countries through judo and promoting understanding of "JITA-KYOEI" (mutual welfare and benefit), the philosophy at the core of judo, the Judo Exchange Program "JAPAN-ASEAN JITA-KYOEI PROJECT" held an international seminar that 18 young instructors from ASEAN countries were invited to; dispatched Japanese instructors to Myanmar, Thailand and Laos; and prepared an English translation of judo terms. Of particular note, instructors held lectures and judo demonstrations in collaboration with Japan's Kodokan Judo Institute in Brunei, the only one of the 10 ASEAN countries not to have a judo federation, which resulted in the establishment of the Brunei Judo Federation in February 2018.



Lecture by Ma Thida

Invitation Program for Cultural Leaders

A total of four people were invited as prominent figures in the ASEAN region to provide a firsthand introduction to Japan to enhance their awareness and understanding of the country. The four figures were Ma Thida (Board Member, PEN International), Liza Diño-Seguerra (Chairperson and CEO, Film Development Council of the Philippines), Tan Michael Lim (Chancellor, University of the Philippines Diliman) and Pham Chi Trung (Director, Youth Theater of Vietnam). A total of 127 people attended the lecture given by Ma Thida at Sophia University.



Learning about archiving so as not to forget past earthquakes and disasters

HANDS! — Hope and Dreams — Project

With the theme of "disaster and environment," both critical issues for a sustainable society, training programs were held in Japan, Indonesia, and the Philippines for 26 fellows selected from nine countries in Asia. Fellows from those countries with strong motivation in the theme conducted fieldwork and workshops through which innovative disaster-prevention education programs for children were proposed and actually conducted on the ground.



Sanriku-Asian Network Project 2017 (Sanriku International Arts Festival)

As a part of efforts to bolster regional promotion and reconstruction efforts through international exchange, the Asia Center has been conducting exchange programs for performing arts in Sanriku, the area devastated by the Great East Japan Earthquake, and Asian countries since 2015 based on collaboration with the Sanriku International Arts Festival. In FY2017, artists from Indonesia (Cirebon Mask Dance) and Malaysia (Bajau Traditional Dance) were invited to perform with local performing arts groups in the Arts Festival to further promote exchange. The entire festival attracted around 13,000 people.



Asia-Euro Policy Dialogue (AEPD)

The 1st Asia-Euro Policy Forum was held in Jakarta in June 2017 as part of the Asia-Euro Policy Dialogue (AEPD), a global policy research project. The forum involved prominent figures and policymakers from Japan, ASEAN countries and the Europe. Indonesia's Vice President and Minister of Foreign Affairs as well as the former Secretary-General of ASEAN delivered keynote speeches. A total of 30 speakers attended at the forum, including six experts from Japan.

Other Initiatives

Promoting Understanding of and Participation in International Cultural Exchanges

The Japan Foundation gives the Japan Foundation Awards and the Japan Foundation Prizes for Global Citizenship to individuals and groups who have contributed to deepening mutual understanding between Japan and the world through international cultural exchange, and to groups who engage in outstanding community-based international cultural exchange.

The Japan Foundation Awards

The Japan Foundation Awards are given to individuals and groups who make particularly significant contributions to the enhancement of international understanding and the promotion of international friendship through academic and artistic or other cultural activities. In FY2017, the 45th such occasion, three recipients were chosen from a total of 71 individuals and groups.

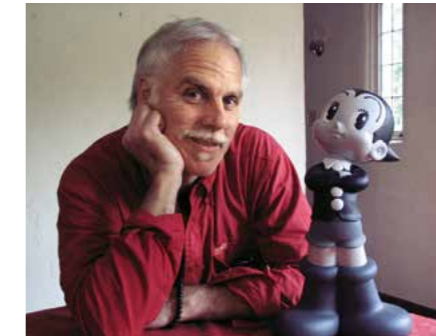
▼ FY2017 recipients and reasons for the award



Alexandra Munroe at Guggenheim Museum, 2016. Photo c. David Heald

Alexandra Munroe / U.S.
(Senior Curator, Asian Art, and Senior Advisor, Global Arts, Solomon R. Guggenheim Museum)

Alexandra Munroe has conducted empirical research into Japanese art from the postwar to the contemporary period from an integrated perspective of art history as well as planned and organized several museum exhibitions. She contributed to mutual international understanding through epoch-making exhibitions where she presented Japanese avant-garde art to the world as an autonomous body of work on its own terms, moving beyond the Euro-American perspective, based on a profound knowledge and understanding of Japanese culture. This also served to enhance the international acclaim of contemporary Japanese artists.



Frederik L. Schodt / U.S.
(Writer, translator, and interpreter)

Frederik L. Schodt has been a pioneer of manga and translation for four decades. In his first monograph in 1983, *Manga! Manga! The World of Japanese Comics*, Schodt provided not only a wealth of information on Japanese manga but also almost 100 pages of translated manga. He has drawn attention to other fields of marginalized artistic expression and has contributed to multilateral cultural exchange.



Andrej Bekeš / Slovenia
(Professor Emeritus of Japanese Studies, University of Ljubljana)

In 1995, Andrej Bekeš was appointed as the first head of the newly established Department of Asian and African Studies in the Faculty of Arts at the University of Ljubljana, working to advance Japanese studies and cultivate human resources in Slovenia. He has played a pivotal role in creating Europe-wide research networks for researchers in Japanese studies, and has been committed as a researcher and educator who has built bridges between Japan and Slovenia as well as Japan and Europe.

The Japan Foundation Prizes for Global Citizenship

The Japan Foundation Prizes for Global Citizenship are awarded to organizations in Japan that engage in original, forward-thinking initiatives for deepening ties between Japan and other countries, facilitating the exchange of knowledge, ideas and information and encouraging collaborative thinking. In FY2017, the 33rd occasion, three organizations were selected for prizes from a list of 149.

▼ FY2017 recipients and reasons for the prize



Shibazono Danchi Neighborhood Association (Kawaguchi City, Saitama)

Foreigners started living in the Shibazono Danchi apartment complex in the 1980s, reaching approximately 40% by 2009, causing friction with the Japanese residents. However, as the result of numerous activities such as the posting of interpreters and the hosting of exchange events, the apartment complex has become an invigorated environment in which an awareness of coexistence has taken root. The initiatives of the association, in which Japanese and foreign residents have worked continuously through trial and error, have significance because they can serve as a new model for responding to the issues that communities throughout Japan may face in the future.



Nagomi Visit (Minato City, Tokyo)

Nagomi Visit provides "home visit" experiences to visiting tourists. The international exchange takes place over two to three hours in which the visitors sit with the host and eat home cooked meals. The initiative enables the typical Japanese family to easily engage in international exchange while the reach of the project is impressive, with guests participating from all over the world and host families located throughout Japan. This is a leading example of an international exchange activity that harnesses the Internet.



Koganecho Area Management Center (Yokohama City, Kanagawa)

The Hatsuko and Hinodecho areas of Yokohama were known for their many establishments engaged in illegal entertainment businesses. These businesses were closed down in a concentrated prefectural police campaign in 2005, and a community development project leveraging art was begun in 2008. The Koganecho Area Management Center runs the Koganecho Bazaar, an art festival that involves the entire community as its venue, and international exchange programs such as the artist-in-residence exchange program, enabling the artists to serve as a bridge between people in this community where many residents have roots and connections with foreign countries. This is an initiative of cultural exchange and community development, connecting people with the community and searching for its potentials.

Summary of Arts and Cultural Exchange Programs

1. Performances

The Old Joruri Puppet Play: *The Tale of High Priest Kochi* by Saruhachi-za company, London performance (U.K.)
Ninagawa Macbeth by Ninagawa Company (U.K.)
DRUM TAO Kazakhstan performance (Kazakhstan)
ENCUENTROS by Saburo Teshigawara/KARAS × Acosta Danza (Cuba)

2. Japan Festival Support Program

Participation in the “National Cherry Blossom Festival 2018” (U.S.)
Commemorative Events in Celebration of the 60th Anniversary Since the Establishment of Japan-Malaysia Diplomatic Relations: Noh program *Funa-benkei*, calligraphy demonstration, Rakugo performance in English
Commemorative Events in Celebration of India-Japan Relations: Performances by Makoto Kuriya/Creative Jazz Ensemble Japan, WASABI (traditional Japanese music), Goyokai (Japanese traditional dance group)
KODO Egypt performance
Keiichiro Shibuya + Hatsune Miku: Vocaloid Opera *THE END* (Spain)

3. Lectures and Demonstrations

Traveling Exhibition *Winter Garden* with lectures on contemporary Japanese art (Belarus)
Traveling Exhibition *Handcrafted Form* with lectures on Japanese crafts (New Zealand)
Traveling Exhibition *Manga Hokusai Manga* with lectures and demonstrations on ukiyo-e woodblock prints (Australia)
Follow-up to the Traveling Exhibition *Beautiful Handicrafts of Tohoku* with a lecture, demonstration, and workshop on Japanese pottery and handicrafts in Tohoku region (Egypt)
Traveling Exhibition *The Dolls of Japan* with lecture and workshop on Japanese dolls (China)
Traveling Exhibitions *Japanese Design Today 100* and *Beautiful Handicrafts of Tohoku* with lectures and workshop on *origata* (wrapping design) (Spain, Romania)

4. Grant Program for Dispatching Artists and Cultural Specialists

105 grants provided for the dispatch of personnel to 264 cities in 64 countries

5. Performing Arts Japan (PAJ)

19 grants provided for performances held in 60 cities in 14 countries
North America: 12 grants for performances held in 41 cities in 2 countries
Europe: 7 grants for performances held in 19 cities in 12 countries

6. International Exhibition Participation

57th International Art Exhibition, La Biennale di Venezia

7. Art Exhibitions

Japanorama—New vision on art since 1970 (France)
Japan-ness—Architecture and urbanism in Japan since 1945 (France)
Yōga: Modern Western Paintings of Japan (Taiwan)
Going Away Closer: Japan-Cuba Contemporary Art Exhibition (Cuba)
The Japanese House: Architecture and Life after 1945 (Japan)

8. Japan Foundation Traveling Exhibitions

A wide range of traveling exhibitions based on themes such as design, architecture, photography, handicrafts, martial arts and pop culture were held in 92 cities in 57 countries/regions.

9. Exhibition Abroad Support Program

27 grants for exhibitions in 29 cities in 16 countries

10. Participation in International Book Fairs

Participation in 12 book fairs in 12 cities in 12 countries

11. Support Program for Translation and Publication on Japan

21 grants provided for translations in 17 countries

12. Networking of Cultural Specialists

Art & Architecture Project in Chiang Mai
Japan-Americas Art Curator Exchange Program
Japan-China Curator Exchange Program

13. Transmission of Information

Invitation of award recipients of the 11th Japan International Manga Award to Japan
Performing Arts Network Japan (PANJ) website
Invitation of foreign art journalists
Japan Film Database (JFDB)

14. Cultural Cooperation

Soccer instructor dispatch program (Mongolia)
Orchestra instruction (Sri Lanka)
Music specialist dispatch program (Saudi Arabia)
Workshop on disseminating sports for the disabled (Zimbabwe)
Judo specialist dispatch program (Botswana)

15. U.S. and European Museum Infrastructure Support Program

4 grants provided in 4 cities in 2 countries

16. Japanese Film Screenings

94 Japanese film festivals/screenings held in 67 countries/regions
Grants for 11 programs in 8 countries/regions

17. Japanese TV Broadcasting Abroad

908 television programs broadcast to 101 countries/regions

18. Long-Term Exchange Program for Chinese High School Students

31 students from the 11th session returned to China
30 students from the 12th session arrived in Japan

19. Centers for “Face-to-Face Exchanges” in China

Centers for “Face-to-Face Exchanges” organized and held events in 14 cities in China. The events were attended by 37,924 people.
Seminars introducing Japanese business culture
Make-up Workshop
Training for staff of Centers for “Face-to-Face Exchanges”
Inviting leaders of the Center for “Face-to-Face Exchanges” in Harbin

20. Network-Building

University Student Exchange Program
Visits to China by Japanese High School Students
Visits to China by Host Families
Read/Lead Asia
8 dispatch programs and 2 invitational programs were implemented, such as Training in Japan for representative students from Centers for “Face-to-Face Exchanges”
*Administered by the Film and Broadcast Media Department

Summary of Japanese-Language Education Overseas Programs

1. Promoting the JF Standard for Japanese-Language Education

Expanded language offerings for JF Standard for Japanese-Language Education introductory pamphlets
Published *Marugoto Intermediate 2 (B1)*
Implemented 27 activities such as holding various seminars in Japan and overseas, providing information through training sessions, etc., and providing advice for joint research

2. JF Language Course

Language courses held in 31 cities in 28 countries/regions

3. Online Educational Tools

- (1) The online version of *Erin's Challenge! I can speak Japanese* accessed 4.73 million times in 12 months
- (2) *The Minna no Kyozai* website accessed approximately 1.51 million times in 12 months
- (3) Approximately 33,000 registered users for JF Japanese e-Learning *Minato*
- (4) *Hirogaru, get more of Japan and Japanese* website accessed approximately 300,000 times in 12 months
- (5) *Listen Together: The Songs of Japan* website accessed approximately 110,000 times in 12 months
- (6) *MARUGOTO Plus* websites accessed approximately 3.43 million times in 12 months
- (7) *Japanese in Anime & Manga* website accessed approximately 1.13 million times in 12 months
- (8) *NIHONGO e ㊦* website accessed approximately 1.03 million times in 12 months
- (9) The *Nihongo de Care-navi* website accessed approximately 780,000 times in 12 months
- (10) The *HIRAGANA/KATAKANA Memory Hint* (character learning app) downloaded approximately 110,000 times in 12 months
- (11) The *KANJI Memory Hint 1&2* (character learning app) downloaded approximately 100,000 times in 12 months

4. Japanese-Language Proficiency Test (JLPT)

1st Test (July 2)
Overseas: Held in 127 cities in 35 countries/regions, with 314,140 applicants (262,930 examinees).
Japan*: Held in 47 prefectures, with 152,267 applicants (141,176 examinees).
2nd Test (December 3)
Overseas: Held in 226 cities in 76 countries/regions, with 379,501 applicants (317,774 examinees).
Japan*: Held in 47 prefectures, with 181,203 applicants (165,500 examinees).
* In Japan, the test is run by Japan Educational Exchanges and Services (JEES).

5. Surveys and Provision of Information Relating to Japanese-Language Projects

The Japan Foundation Japanese-Language Education Bulletin issued annually
Operation of website “Nihongo Kyōiku Kuni-Chiikibetsu Jōhō” (Information on Japanese-language education by country/region; available in Japanese)

6. Japanese-Language Education Overseas Programs of Overseas Offices and the “JF Nihongo Network” (Sakura Network)

Projects by Japan Foundation’s overseas offices and Japan Center for Human Resources Development (Japan Center) branches: 230 projects in 28 countries
Sakura Network: 288 member organizations in 92 countries
Sakura Network Member Japanese-language Study Tours: 37 participants from 1 country
Support for overseas Japanese-language education institutions (grants): 568 grants in 89 countries/regions

7. Dispatch of Japanese-Language Specialists

Dispatching of Japanese-language specialists and other personnel
Senior Specialists: 38 posts in 24 countries
Specialists: 66 posts in 35 countries
Assistants: 16 posts in 15 countries
J-LEAP: 20 posts in 1 country
Short-term dispatching of Japanese-language specialists: 2 (Myanmar)

8. Training Programs for Overseas Teachers

Training Program for Leading Teachers of the Japanese Language
Graduate Program in Japanese Language and Culture (Master’s Course): 7 people (2 new, 5 continuing) from 6 countries
Training Program for Teachers of the Japanese Language
Long-term: 40 people in 27 countries
Short-term: 70 people in 35 countries/regions
(Short-term (Summer): 36 people in 24 countries/regions
Short-term (Winter): 34 people in 19 countries (Japanese descendants): 1 person in 1 country)

“Sakura Network” Basic Training Program for Teachers of the Japanese Language: 14 people in 5 countries
Training Program for teachers of JF Language course: 9 people in 9 countries
South Korean secondary school teachers: 36 people
Chinese university teachers: 18 people
Chinese secondary school teachers: 20 people
Thai secondary education civil servant Japanese-language teachers: 50 people
Japanese Speakers’ Forum: 37 people from 6 countries
Project-based: 4 people from 2 countries
Theme-based: 17 people from 12 countries/regions
(Theme-based (course design): 10 people from 8 countries/regions
Theme-based (teaching materials development): 7 people from 5 countries)
Intensive Japanese-Language Training Program for Australian Teachers invited by Osaka Prefectural Government: 5 people
Sakura Network Member Institutions (teachers): 14 people from 7 countries
Southeast Asian Japanese-Language Teachers’ Training College Course in Japan (teachers)
Indonesia: 15 people Vietnam: 9 people
Japanese language Training for Thai Teachers: 13 people

9. Training Programs for Overseas Learners

Japanese-Language Programs for Specialists
Programs for foreign service officers and public officers in FY2016 (ongoing)
Foreign service officers: 29 people from 28 countries
Public officials: 9 people from 8 countries
Specialists in Cultural and Academic Fields 6-month course: 17 people from 10 countries
Programs for foreign service officers and public officers in FY2017
Foreign service officers: 27 people from 27 countries
Public officials: 7 people from 7 countries/regions
Specialists in Cultural and Academic Fields
2-month course: 16 people from 10 countries/regions
6-month course: 19 people from 11 countries
Japanese-Language Programs for Overseas Students
Japanese-Language Programs for Overseas Students (outstanding students): 49 people from 49 countries
Japanese-Language Program for University Students and Japanese Language Institutions in Brazil: 20 people
Lee Soo-Hyun Youth Exchange Program: 20 high school students from South Korea
Japanese-Language Program for Outstanding Students of JF
Japanese-Language Courses: 32 people from 28 countries
Sakura Network Member Institutions (students): 7 people from 7 countries
Japanese-Language Program for JET participants in Osaka: 33 people from 8 countries
Japanese-Language Education Capacity Building
Japanese-Language Program for Southeast Asia Teacher’s Training College Course in Japan (students)
Indonesia: 15 people Vietnam: 18 people

10. Japanese-Language Pre-training Program for Candidates for Nurses and Certificated Care Workers under EPAs

6-month preparatory Japanese-language training programs for prospective nurses and certificated care workers implemented in Indonesia and the Philippines
4 EPA-related training programs implemented in 2 countries
FY2016 (ongoing): 326 from Indonesia / 323 from the Philippines
FY2017 (new): 329 from Indonesia / 317 from the Philippines

11. Commissioned Training Programs

Training for Teachers
Preparatory Training in Japan for Overseas Teachers of Hakuho Scheme for a Global Children’s Japanese Language Network (Hakuho Foundation): 14 teachers from 13 countries/regions
Preparatory training program prior to dispatch to Russia (Japan Russia Youth Exchange Center): 16 young Japanese-language teachers from 1 country
In Country Training Program for Japanese Language Teachers of New Zealand: 7 teachers
Training for Learners
Canon Vietnam Japanese-Language Program: 1 person
Japan Latvian Society in Kansai Japanese-Language Program: 1 person
Japanese-Language Program for Indonesian University Students: 2 university students
Chonburi Technological College Trip Program: 14 students
New Zealand’s Nelson High School Trip Program: 20 students
New Zealand’s Kaikoura High School Trip Program: 6 students

12. Libraries of Japanese-Language Institutes

The Library of the Japanese-Language Institute, Urawa received 18,005 visitors
The Library of the Japanese-Language Institute, Kansai received 15,265 visitors

Summary of Japanese Studies and Intellectual Exchange Programs

1. Support for Japanese Studies Organizations

(1) Japanese studies infrastructure support

Asia

South Korea: Hallym University, Korea University, Seoul National University
Institute for Japanese Studies

China: Zhejiang Gongshang University, Nankai University, Fudan University

Taiwan: Chengchi University

Indonesia: University of Indonesia

Thailand: Chiang Mai University

Vietnam: Institute for Northeast Asian Studies at Vietnam Academy of Social Science, Faculty of Oriental Studies, University of Social Science and Humanities of Vietnam National University Hanoi

Malaysia: University of Malaya

India: School of International Studies, Jawaharlal Nehru University, School of Language, Literature and Culture Studies, Jawaharlal Nehru University, University of Delhi, Visva-Bharati University, Presidency University

Bangladesh: University of Dhaka

Americas

U.S.: University of Iowa, Wesleyan University, Johns Hopkins University, Syracuse University, Northwestern University, University of North Georgia, University of Pittsburgh, Michigan State University, Southern Methodist University

Europe

Iceland: University of Iceland

Italy: Sapienza University of Rome

Uzbekistan: Tashkent State Institute of Oriental Studies

Bulgaria: Sofia University "St. Kliment Ohridski"

Romania: University of Bucharest

Russia: School of Regional and International Studies at Far Eastern Federal University, Saint Petersburg State University

Middle East and Africa

Egypt: Cairo University

(2) Japanese studies project grants

34 projects in 23 countries/regions

2. The Beijing Center for Japanese Studies

(1) Invitation programs

Beijing Foreign Studies University

15 Masters students of the 31st batch invited to Japan to engage in Japanese studies

3 PhD fellows of 16th session

Peking University

20 invited to Japan to engage in training (12th batch of PhD trainees invited to Japan)

(2) Dispatch programs

7 to Beijing Foreign Studies University

10 to Peking University

3. Japanese Studies Fellowship

Scholars/Researchers (Long-term): 53 fellows

Scholars/Researchers (Short-term): 12 fellows

Doctoral Candidates: 78 fellows

4. Enhancement of Japanese Studies Network

(1) Hosted/Co-hosted programs

Research on Japanese studies (China)

Alsace Japanese Study Seminar

Training of young Russian researchers

(2) Grant programs: 25 grants provided in 21 countries

5. Enhancement of Intellectual Exchanges

(1) Hosted/Co-hosted events

Japan-China Intellectual Exchange Program:

2 groups and 10 individuals invited to Japan

Japan-Germany Symposium

Middle East and North Africa Group Study Tour Program: 3 people from 1 country invited to Japan

Joint public seminar with Council of Europe on the topic of "Intercultural Cities": 3 people dispatched from Japan

International symposium "Intercultural Cities and Utilizing Diversity in City Development 2017 Hamamatsu"

(2) Grants programs for intellectual exchange conferences: 23 projects

(3) Grant for International Exchanges by Youth and Community Leaders: 21 projects

6. Grant Program for Social Science, Research and Education on Contemporary Japan

Asia and Oceania

Australian National University

Americas*

Yale University

Johns Hopkins University

Harvard University

Stanford University

Indiana University

Europe

King's College London

INALCO (Institut National des Langues et Civilisations Orientales)/Paris Diderot University (also known as Paris 7)

*Administered by the Japan Foundation Center for Global Partnership

7. Intellectual and Grassroot Exchanges with the United States**

Hosted programs

(1) Abe Fellowship: 10 researchers and 4 journalists

(2) Japan Outreach Initiative (JOI): 13 JOI coordinators (6 new and 7 continuing)

(3) U.S.-Japan Intellectual Network Program: 5 (4 invited and 1 dispatched)

(4) Japanese-American Leadership Symposium: 1 held

Grant programs

(1) Special Initiatives: 9 (3 new and 6 continuing)

(2) Regular Grants: 15 (10 new and 5 continuing)

(3) CGP New York (CGPNY)

CGPNY discretionary grants: 26 (20 grassroot exchanges and 6 intellectual exchanges)

CGPNY grants for Japan-America Societies: 7 (3 new and 4 continuing)

**Administered by the Japan Foundation Center for Global Partnership

Summary of the Asia Center Programs

1. "NIHONGO Partners" Programs

Indonesia: 165

Thailand: 114

Vietnam: 76

Malaysia: 38

The Philippines: 15

Myanmar: 4

Cambodia: 6

Singapore: 1

Brunei: 1

Laos: 1

China: 86

Taiwan: 77

Total of 591 "NIHONGO Partners" sent to 492 schools

Japanese-Language Specialists dispatched: 8 posts in 4 countries*

Counterpart Japanese-language teacher training in Japan: 60 teachers from 2 countries*

Teachers at secondary schools in Thailand who received scholarships to visit Japan: 14 teachers*

"NIHONGO Partners" university student training in Japan: 21 people from 6 countries/regions*

2. Grassroots Exchange Programs

FUN! FUN! ASIAN CINEMA

Society for Asian Cinema Students

Cine Adobo Project (symposium and screening of films from Southeast Asia)

Match Flag Project

HANDS! — Hope and Dreams — Project

Centers for Open Interaction (Chiang Mai, Ho Chi Minh City, Yangon)

Grant Programs: 37 grants

3. The Asia Center Fellowship Program

19 fellows

4. Asian Leadership Exchanges

...and Action! Asia #4: Exchange Program for Students in Film Studies

A Working Title: Training and Development Program for Film Screening Professionals 2017

Performing Arts Presenters Invitation Program

Asia Leadership Fellow Program (ALFP)

Japan-ASEAN Media Forum (Kuala Lumpur)

Short Term Invitation Program for Cultural Leaders

(1) Ma Thida (Myanmar)

(2) Lisa Diño-Seguerra (Philippines)

(3) Tan Michael Lim (Philippines)

(4) Pham Chi Trung (Vietnam)

The Japan Foundation Summer Institute 2017**

Travel grant for participants in the Association for Asian Studies (AAS) Annual Conference**

Travel grant for participants in the Association for Asian Studies (AAS)

AAS-in-ASIA conference**

Salzburg Global Seminar**

Grant Programs: 5 grants**

5. Cultural Collaboration Programs

SUNSHOWER: Contemporary Art from Southeast Asia 1980s to Now

Media Art Exchange Programs (Exhibitions *INTERSTICES: Manifolds of the In-between, x-pol: Buwan Buwan x Maltine, Open workshops BioCamp: Gardens as 'Biotechnik', MeCA | Media Culture in Asia: A Transnational Platform*)

Condition Report project

Thailand: *Brilliant Land of the Buddha*

Celebrating 130 Years of Amity between Japan and Thailand

Culture Exchange Projects with the Tokyo International Film Festival (*CROSSCUT ASIA #04: What's Next from South East Asia* and others)

Japanese Film Festival (JFF) Asia-Pacific Gateway Initiative

Visual Documentary Project 2017

Talents Tokyo 2017

Focus on Asia Fukuoka International Film Festival 2017 "Thai Films-A Diversity of Charm" and others

DANCE DANCE ASIA—Crossing the Movements (Performances in Hanoi and Manila (2017), Tokyo (2018))

TPAM—Performing Arts Meeting in Yokohama 2018 (TPAM 2018)

ENSEMBLES ASIA (Asian Meeting Festival 2017, OPEN GATE 2017 An ever-changing exhibition)

The Power of Tradition, the Form of Artistry

Next Generation: Producing Performing Arts

NOTES: composing resonance

Collaborative project with SCOT (co-production with Indonesia and Japan)

Manila Notes directed by Oriza Hirata

International Collaboration with Toshiki Okada in Thailand

Collaborative project with Kirari Fujimi: A new platform for performing arts creation in Asia

Tomomi Nishimoto Concert

Festival/Tokyo 2017 *Toky Toki Saru*

Asian TYA Network Program

Asian Performing Arts Forum 2017

JFA×J.League×Asia Center Football Exchange (ASIAN ELEVEN)

Saitama International Football Festival 2018

Judo Exchange Program *JAPAN-ASEAN JITA-KYOEI PROJECT*

Innovative City Forum 2017

Symposium of the Japan Consortium for International Cooperation in Cultural Heritage

Sanriku-Asian Network Project 2017 (Sanriku International Arts Festival)

EYES for Embracing Diversity

Dialogue with Southeast Asian Youths (TAMU/Talk with Muslims series)

Special projects relating to the Fukuoka Prize

Dialogue for Peace, Harmony and Security (Myanmar)

Asia-Euro Policy Dialogue (AEPD)

ASEAN Orchestra support program***

Japan-Vietnam Joint Project (KAAT)***

Modern Southeast Asian architectural heritage preservation project***

Asia Student Package Design Competition project (ASPaC)***

The "DOOR to ASIA" project involving cultural exchange between young Asian designers and people in disaster-affected areas of the Tohoku region***

Grant programs: 58 grants

* Administered by the Japanese-Language Group

** Administered by the Japanese Studies and Intellectual Exchange Program

*** Administered by the Arts and Culture Department

Financial Cooperation from the Private Sector

The Japan Foundation's international cultural exchange programs are made possible thanks to generous financial contributions from a wide range of private-sector entities, including companies, organizations, and individuals.

The donation system and other aspects of private funding for FY2017 are explained below, along with a list of donors and programs supported with their funding.

1. Types of Financial Cooperation

(1) General Donations

General donations are used to fund the Japan Foundation's international cultural exchange programs.

i. General donations system

General donations are received from companies, organizations and individuals. The amount and timing of the donation are up to the donor. Donors in FY2017 are listed on the following page under Donors for Program Expenses and Private Endowment Providers.

● Donations for program expenses

These donations fund the Japan Foundation's programs conducted in the same fiscal year as the donation. The donor can request the donation to be used for a specific project during the fiscal year.

● Donations for operational funds (private endowments)

These donations are deposited to the Japan Foundation's funds, and the accrued interest is used for program expenses in perpetuity. The FY2017 implementation of special programs established and named at the request of the benefactors in the past is outlined on the next page under Programs Supported by Private Endowments.

ii. Corporate Membership System (Supporting members)

Fixed donations are received from companies and organizations as annual membership dues. They are used to fund programs conducted in the same fiscal year. Donations are made in units of 100,000 JPY. General Members donate 100,000 JPY to 400,000 JPY, and Special Members donate 500,000 JPY or more annually. Membership benefits include invitations to various events of the Japan Foundation and a copy of The Japan Foundation Annual Report. Corporate members for FY2017 are listed on the next page under Corporate Members.

(2) Designated Donations

Financial contributions from individuals and corporations in Japan to support international cultural exchange programs in Japan and overseas are received by the Japan Foundation as donations to be used as a subsidy for applicable cultural exchange projects.

This system makes donors eligible for tax benefits for their donations. Applicable programs are international cultural exchange activities such as personnel exchanges, overseas Japanese studies and Japanese-language education programs, performances, exhibitions and seminars. Designated donations are reviewed by a screening committee of outside experts to decide whether to accept the donation. Programs funded by designated donations in FY2017 are listed on the next page under Programs Supported by Designated Donations.

(3) Other Types of Private Financial Support

Besides donations, the Japan Foundation receives private-sector financial support in various forms such as cooperation funds and grants. Examples of such support in FY2017 are listed on the next page under Primary Examples of Non-Donation Financial Support.

2. Tax Benefits for Donations

The Japan Foundation is a "Designated Public Benefit Organization" in accordance with Article 77 of the Order for Enforcement of the Corporation Tax Act and Article 217 of the Order for Enforcement of the Income Tax Act. This makes Japan-based donations to the Japan Foundation eligible for the following tax benefits.

(1) For corporations

The total donation amount to Designated Public Benefit Organization or the maximum deductible donation amount to Designated Public Benefit Organization, whichever is smaller, is treated as a loss.

NB 1: If the total donation amount to Designated Public Benefit Organization is larger, the amount not treated as a loss (the amount exceeding the maximum deductible amount of donation to Designated Public Benefit Organizations) is included in the amount of normal donations.

The maximum deductible amount of a donation is calculated as follows:

- Donations to Designated Public Benefit Organizations (Maximum Deductible Donation Amount)
(Amount of capital x Number of months for the period/12 x 0.375% + Amount of income x 6.25%) x 1/2
- Normal donations
(Amount of capital x Number of months for the period/12 x 0.25% + Amount of income x 2.5%) x 1/4

(2) For individuals

The total donation amount minus 2,000 JPY (up to 40% of the gross income) is tax deductible. Donations of inherited assets are also eligible for beneficial taxation treatment.

3. Donations Received in FY2017

	Number	Amount (JPY)
General Donations	48	175,709,000
Supporting members	33	6,850,000
Donations for programs	13	168,834,000
Private endowments	2	25,000
Designated Donations	29	419,263,593 (*2)

NB 2: From the designated donations received, 379,502,298 JPY plus the 12,000,000 JPY carried over from FY2016 were given as subsidies to 11 programs (see Programs Supported by Designated Donations on the next page). The remaining 27,761,295 JPY of the designated donations will be provided as subsidies to two programs in FY2018.

NB 3: From the establishment of the Japan Foundation in 1972 to the end of FY2017, the cumulative amount of general donations it has received was approximately 2,859,670,000 JPY and the cumulative amount of designated donations received was approximately 67,628,690,000 JPY.

NB 4: A total of 53,840,000 JPY of non-donations was received from the private sector in FY2017 as financial cooperation (cooperation funds, grants, etc.).

List of Donors, Contributors, and Supported Programs in FY2017

Donors for Program Expenses

(Listed in random order and without honorifics. Programs applicable for contributions in parentheses.)

TOKYO GAS Co., Ltd. (Southeast Asia Japanese Education Support Program)
Japan Tobacco Inc. (support for Japanese-language and Japanese studies education at Russian universities)
The Bank of Tokyo-Mitsubishi UFJ, Ltd. (Long-Term Exchange Program for Chinese High School Students)
Nissan Motor Co., Ltd. (*Yōga: Modern Western Paintings of Japan*)
Toyota Motor Corporation (*Japonismes 2018*)
Kinoshita Group Co., Ltd. (*Japonismes 2018*)
Mitsubishi Heavy Industries, Ltd. (*Japonismes 2018*)
Sompo Japan Nipponkoa Insurance Inc. (*Japonismes 2018*)
Yoshiaki Fujiki (Japan Outreach Initiative [JOI] Program)
Kazuo Ogura (Survey and research on international cultural exchange policies/Artistic activities of persons with disabilities)
Makoto Kume & one individual (General program expenses)

Private Endowment Providers

Masamitsu Odaka & one individual

Programs Supported by Private Endowments

(Special programs established and named at the request of the benefactor)

Takasago Thermal Engineering Japanese Studies Fellowship
The benefactor is Takasago Thermal Engineering Co., Ltd. To promote Japanese studies in Southeast Asia, this program provides young Japanese studies scholars in Southeast Asia with opportunities to conduct research in Japan. In FY2017, one fellow from Vietnam was invited to Japan.
Ken Watanabe Memorial Fund, Library Book Donations
The benefactor is Mr. Yukinobu Watanabe, the father of Foreign Ministry worker Mr. Ken Watanabe who died in a traffic accident while training in the U.S. In FY2017, 139 Japanese studies books were donated to the Tianjin Academy of Social Sciences in China.

Corporate Members (As of end FY2017, in alphabetical order)

(1) Special Members

The Bank of Tokyo-Mitsubishi UFJ, Ltd.; Mizuho Bank, Ltd.; Shochiku Co., Ltd.; SMBC Nikko Securities Inc.

(2) General Members

All Japan Kendo Federation; Asuka Foundation; Bonjinsha Inc.; Daiichi Seiwa Jimusho Co., Ltd.; Daikin Industries, Ltd.; Daiwa Securities Co. Ltd.; Fuji Xerox Co., Ltd.; Hitachi Ltd.; Idemitsu Kosan Co., Ltd.; Ikenobo; Insho-sha; Japan International Cooperation Center; Katolec Corp.; Kodansha Ltd.; Kodokan Judo Institute; Kokusai Service Agency; Komazawa University; Mitsubishi UFJ Morgan Stanley Securities Co., Ltd.; Mori Building Co., Ltd.; Motion Picture Producers Association of Japan, Inc.; NHK International, Inc.; Nippon Origami Association; Shiseido Co., Ltd.; Shorinji Kempo Organization; Starlanes Travel Service Corp.; Sumitomo Mitsui Banking Corp.; Tokyo Business Service Co., Ltd.; Urasenke Konnichian Foundation; and one other corporate member

Programs Supported by Designated Donations

(Country of program implementation in parentheses. Listed in random order)

Asian University for Women Scholarship Program (Bangladesh); CWAJ Cultural Exchange Scholarship Program for Women (Japan); Music from Japan 2018 Artist Residence (U.S.); U.S.-Japan Research Institute (U.S.); Japanese Legal Studies Program at University of Michigan Law School (U.S.); Center for Japanese Studies, Tsinghua University (China); LSH Asia Scholarship (Japan); 23rd Honolulu Festival (U.S.); Balkan Chamber Orchestra 2017 (Austria); Shitennoji Wasso (Japan); Portland Japanese Garden Expansion Project (U.S.)

Primary Examples of Non-Donation Financial Support

Ishibashi Foundation

Support for the art and architecture exhibitions to introduce Japan at Centre Pompidou-Metz; *Going Away Closer: Japan-Cuba Contemporary Art Exhibition*; and the Japan Pavilion at the 16th International Architecture Exhibition, La Biennale di Venezia

Warehouse TERRADA

FY2017 Media Art Exchange Program

Shoyu Club

Provision of Japanese-language educational materials and equipment to Hue University College of Foreign Languages and Da Nang University of Foreign Languages, and support for the "Japanese Language & Culture Japan Study Tour for Vietnamese Japanese studies students and young researchers"

NB 5: For more details about our donors and supporters, see our website (in Japanese): <https://www.jpf.go.jp/j/about/support/donation/list.html>

Financial Statements

Financial Results for FY2017 (April 1, 2017 – March 31, 2018)

(Unit: JPY)

Item	Arts and cultural exchange programs				Japanese-language education programs				Japanese studies and intellectual exchange programs			
	Budget	Result	Difference	Notes	Budget	Result	Difference	Notes	Budget	Result	Difference	Notes
▼ Revenues												
Government subsidies for operational expenses	3,369,163,000	3,369,163,000	0		4,647,787,000	4,647,787,000	0		1,721,995,000	1,721,995,000	0	
Investment revenue	131,460,000	139,059,620	7,599,620		0	1,651,386	1,651,386		657,301,000	528,725,079	(128,575,921)	*5
Donation revenue	778,000	107,491,350	106,713,350	*1	6,266,000	40,976,003	34,710,003		6,497,000	24,280,487	17,783,487	
Income from commissioned projects	8,554,000	0	(8,554,000)		22,147,000	20,283,796	(1,863,204)		0	0	0	
Income from reversal of Asia Center programs fund	0	0	0		0	0	0		0	0	0	
Other revenue	26,673,000	34,850,502	8,177,502		1,071,534,000	1,578,165,022	506,631,022	*4	66,706,000	53,873,757	(12,832,243)	
Income from reversal of reserve carried over from previous mid-term target period	0	1,014,122,919	1,014,122,919	*2	0	0	0		0	0	0	
Total	3,536,628,000	4,664,687,391	1,128,059,391		5,747,734,000	6,288,863,207	541,129,207		2,452,499,000	2,328,874,323	(123,624,677)	
▼ Expenditures												
Operating expenses	3,536,628,000	3,165,714,761	370,913,239	*3	5,747,734,000	5,202,715,247	545,018,753	*3	2,452,499,000	1,770,403,114	682,095,886	*3
General and administrative expenses	0	0	0		0	0	0		0	0	0	
Salaries and wages	0	0	0		0	0	0		0	0	0	
Supplies	0	0	0		0	0	0		0	0	0	
Total	3,536,628,000	3,165,714,761	370,913,239		5,747,734,000	5,202,715,247	545,018,753		2,452,499,000	1,770,403,114	682,095,886	

Item	Survey, research, and information service programs				Asia Center Programs				Overseas programs			
	Budget	Result	Difference	Notes	Budget	Result	Difference	Notes	Budget	Result	Difference	Notes
▼ Revenues												
Government subsidies for operational expenses	535,365,000	535,365,000	0		0	0	0		3,752,975,000	3,752,975,000	0	
Investment revenue	0	0	0		0	0	0		0	102,853,448	102,853,448	*5
Donation revenue	0	2,700,000	2,700,000		0	0	0		7,505,000	187,305	(7,317,695)	
Income from commissioned projects	0	0	0		0	0	0		0	0	0	
Income from reversal of Asia Center programs fund	0	0	0		3,983,602,000	3,622,307,844	(361,294,156)	*3	0	0	0	
Other revenue	1,947,000	36,692	(1,910,308)		0	0	0		97,008,000	104,145,590	7,137,590	
Income from reversal of reserve carried over from previous mid-term target period	0	0	0		0	0	0		0	0	0	
Total	537,312,000	538,101,692	789,692		3,983,602,000	3,622,307,844	(361,294,156)		3,857,488,000	3,960,161,343	102,673,343	
▼ Expenditures												
Operating expenses	537,312,000	526,957,682	10,354,318		3,983,602,000	3,622,307,844	361,294,156	*3	3,857,488,000	3,899,119,114	(41,631,114)	
General and administrative expenses	0	0	0		0	0	0		0	0	0	
Salaries and wages	0	0	0		0	0	0		0	0	0	
Supplies	0	0	0		0	0	0		0	0	0	
Total	537,312,000	526,957,682	10,354,318		3,983,602,000	3,622,307,844	361,294,156		3,857,488,000	3,899,119,114	(41,631,114)	

Item	Cooperation in cultural exchange facilities programs				Common expenses				Total			
	Budget	Result	Difference	Notes	Budget	Result	Difference	Notes	Budget	Result	Difference	Notes
▼ Revenues												
Government subsidies for operational expenses	0	0	0		1,056,497,000	1,056,497,000	0		15,083,782,000	15,083,782,000	0	
Investment revenue	0	82,663	82,663		11,937,000	18,020,709	6,083,709		800,698,000	790,392,905	(10,305,095)	
Donation revenue	274,580,000	407,312,448	132,732,448	*6	456,000	0	(456,000)		296,082,000	582,947,593	286,865,593	
Income from commissioned projects	0	0	0		0	0	0		30,701,000	20,283,796	(10,417,204)	
Income from reversal of Asia Center programs fund	0	0	0		0	0	0		3,983,602,000	3,622,307,844	(361,294,156)	
Other revenue	0	0	0		21,829,000	3,632,117	(18,196,883)		1,285,697,000	1,774,703,680	489,006,680	
Income from reversal of reserve carried over from previous mid-term target period	0	0	0		0	0	0		0	1,014,122,919	1,014,122,919	
Total	274,580,000	407,395,111	132,815,111		1,090,719,000	1,078,149,826	(12,569,174)		21,480,562,000	22,888,540,737	1,407,978,737	
▼ Expenditures												
Operating expenses	274,580,000	401,523,087	(126,943,087)	*6	0	0	0		20,389,843,000	18,588,740,849	1,801,102,151	
General and administrative expenses	0	0	0		1,090,719,000	1,303,751,949	(213,032,949)		1,090,719,000	1,303,751,949	(213,032,949)	
Salaries and wages	0	0	0		393,128,000	428,649,812	(35,521,812)		393,128,000	428,649,812	(35,521,812)	
Supplies	0	0	0		697,591,000	875,102,137	(177,511,137)	*7	697,591,000	875,102,137	(177,511,137)	
Total	274,580,000	401,523,087	(126,943,087)		1,090,719,000	1,303,751,949	(213,032,949)		21,480,562,000	19,892,492,798	1,588,069,202	

*1. Due to increase in general donations for the Japan Exposition program received from private enterprises and other factors

*2. Due to approval of the carrying over of reserve from previous mid-term target period during FY2017

*3. Due to the fact that the implementation of some programs was shifted to FY2018 or later, and other factors

*4. Due to a portion of funds from FY2016 being deposited in FY2017 and other factors

*5. While the Center for Global Partnership is funded by investment revenue, a portion of the funding was paid out from expense for overseas programs.

*6. Due to increase in designated donations received and compensated expenditures, and other factors

*7. While a portion of the employment expense of fixed-term and other employees of the administrative departments had previously been allocated to individual departments, the expense was paid out from the common expenses segment, and other factors.

Balance Sheet (as of March 31, 2018)

(Unit: JPY)

Assets			
I Current assets			
Cash and deposits	14,762,858,736		
Marketable securities	5,523,304,355		
Advance payments	36,523,168		
Prepaid expenses	50,971,005		
Accrued income	196,342,910		
Accounts receivable	516,916,853		
Other current assets	25,812,116		
Total current assets	21,112,729,143		
II Fixed assets			
1 Tangible fixed assets			
Buildings	13,329,381,446		
Accumulated depreciation	(5,913,788,225)	7,415,593,221	
Structures	319,497,661		
Accumulated depreciation	(291,400,947)	28,096,714	
Machinery and equipment	57,719,952		
Accumulated depreciation	(15,623,776)	42,096,176	
Vehicles and transport equipment	128,494,596		
Accumulated depreciation	(95,359,837)	33,134,759	
Tools, equipment, and fixtures	1,367,711,775		
Accumulated depreciation	(996,965,729)	370,746,046	
Art objects	534,311,528		
Accumulated depreciation	(9,372,303)	524,939,225	
Land	63,515,000		
Total tangible fixed assets	8,478,121,141		
2 Intangible fixed assets			
Software	280,312,881		
Telephone subscription rights	441,000		
Software in progress	47,097,720		
Total intangible fixed assets	327,851,601		
3 Investments and other assets			
Investment securities	51,297,700,613		
Long-term time deposits	7,600,000,000		
Deposits and bonds	873,747,329		
Total investments and other assets	59,771,447,942		
Total fixed assets	68,577,420,684		
Total assets	89,690,149,827		
Liabilities			
I Current liabilities			
Operational grant liabilities	2,119,921,115		
Deposits subsidies and others	3,664,554,600		
Donations received	174,171,786		
Amount in arrears	1,027,601,104		
Accrued expenses	2,049,363		
Advances received	1,406,658		
Deposits payable	10,945,447		
Deferred revenue	20,472,840		
Lease liabilities	7,730,603		
Forward exchange contracts	11,616,936		
Allowance			
Allowance for bonuses	14,442,322	14,442,322	
Total current liabilities	7,054,912,774		
II Fixed liabilities			
Contra accounts for assets			
Contra accounts for assets funded by operational grants	1,397,475,515		
Contra accounts for assets funded by subsidies	3,917,705		
Contra accounts for assets funded by donations	2,520,411		
Contra accounts for assets for software in progress funded by operational grants	47,097,720	1,451,011,351	
Long-term deposits subsidies	5,197,407,447		
Long-term lease liabilities	9,138,585		
Asset retirement obligations	30,393,911		
Total fixed liabilities	6,687,951,294		
Total liabilities	13,742,864,068		
Net assets			
I Capital stock			
Government investment	77,729,095,177		
Total capital stock	77,729,095,177		
II Capital surplus			
Capital surplus	(116,741,488)		
Accumulated depreciation not included in the profit and loss statement (loss)	(5,899,558,076)		
Accumulated impairment losses not included in the profit and loss statement (loss)	(126,000)		
Accumulated interest expense not included in the profit and loss statement (loss)	(7,873,919)		
Endowments from private sector	908,003,787		
Total capital surplus	(5,116,295,696)		
III Retained earnings			
Reserve carried over from previous mid-term target period	3,413,134,720		
Unappropriated loss for the term	(67,031,506)		
(Of which: Gross loss for the term)	(67,031,506)		
Total retained earnings	3,346,103,214		
IV Valuation and translation adjustments			
Deferred gains or losses on hedges	(11,616,936)		
Total valuation and translation adjustments	(11,616,936)		
Total net assets	75,947,285,759		
Total liabilities and net assets	89,690,149,827		

Profit and Loss Statement (April 1, 2017 – March 31, 2018)

(Unit: JPY)

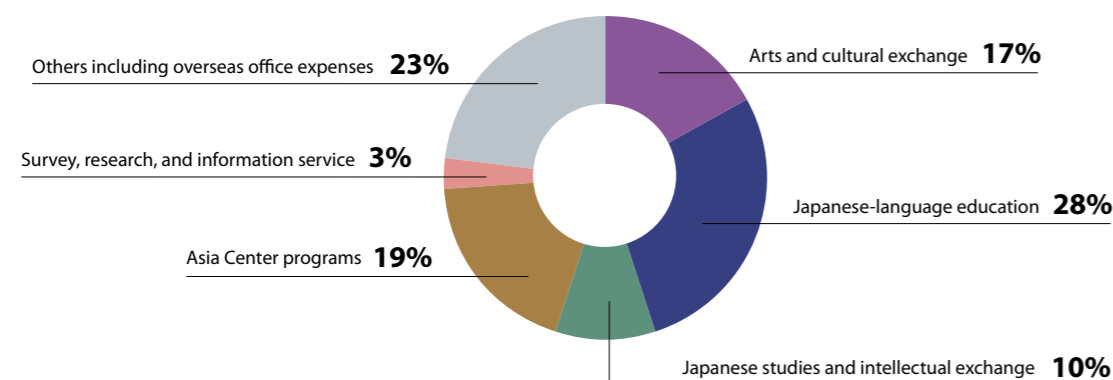
Ordinary expenses		
Arts and cultural exchange programs	3,356,559,493	
Japanese-language education programs	5,261,998,160	
Japanese studies and intellectual exchange programs	1,770,762,913	
Survey, research, and information service programs	567,032,430	
Asia Center programs	3,623,743,278	
Overseas programs	3,913,878,475	
Cooperation in cultural exchange facilities programs	401,523,087	
General and administrative expenses	1,247,059,902	
Financial expenses	708,361	
Miscellaneous losses	696,660,771	
Total ordinary expenses		20,839,926,870
Ordinary income		
Income from operational grants	12,692,802,086	
Income from investments	825,224,279	
Income from commissioned projects	20,232,565	
Income from subsidies	3,620,331,071	
Income from donations		
Income from donations	77,512,043	
Income from designated donations	391,502,298	469,014,341
Reversal of contra accounts		
Reversal of contra accounts for assets funded by operational grants	289,718,493	
Reversal of contra accounts for assets funded by subsidies	3,412,207	
Reversal of contra accounts assets funded by donations	915,946	294,046,646
Financial income		
Interest received	373,624	373,624
Sundry income		
Income from the Japanese-Language Proficiency Test	1,133,434,485	
Other sundry income	397,599,194	1,531,033,679
Total ordinary income		19,453,058,291
Ordinary loss		1,386,868,579
Extraordinary losses		
Loss on retirement of fixed assets	6,677,249	6,677,249
Extraordinary profits		
Reversal of contra accounts for assets funded by operational grants	6,664,808	6,664,808
Net loss for the term		1,386,881,020
Reversal of reserve carried over from previous mid-term target period		1,319,849,514
Gross loss for the term		67,031,506

Statement of Loss Disposition (June 29, 2018)

(Unit: JPY)

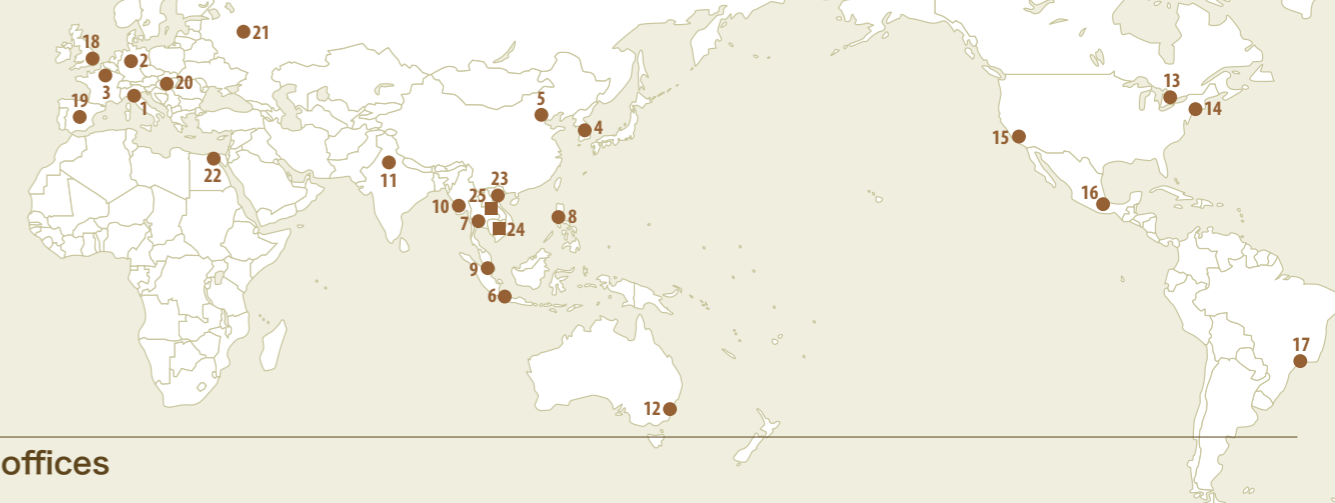
I Unappropriated loss at the end of the term		67,031,506
Gross loss for the term	67,031,506	
II Deficit carried forward		67,031,506

FY2017 expenditure composition ratio by project field



General administrative expenses not included

The Japan Foundation's Global Network



Overseas offices

- Italy**
The Japan Cultural Institute in Rome
URL: <http://www.jfroma.it/>
(Italian/Japanese)
- Germany**
The Japan Cultural Institute in Cologne
URL: <http://www.jki.de/>
(German/Japanese)
- France**
The Japan Cultural Institute in Paris
URL: <http://www.mcjp.fr/>
(French/Japanese)
- South Korea**
The Japan Foundation, Seoul
URL: <http://www.jpf.or.kr/>
(Korean/Japanese)
- China**
The Japan Foundation, Beijing
URL: <http://www.jpfbj.cn/>
(Chinese/Japanese)
- Indonesia**
The Japan Foundation, Jakarta
URL: <http://www.jpf.or.id/>
(Indonesian/English/Japanese)
- Thailand**
The Japan Foundation, Bangkok
URL: <http://www.jfbkk.or.th/>
(Thai/English/Japanese)
- Philippines**
The Japan Foundation, Manila
URL: <http://www.jfmo.org.ph/>
(English)
- Malaysia**
The Japan Foundation, Kuala Lumpur
URL: <http://www.jfkl.org.my/>
(English)
- Myanmar**
The Japan Foundation, Yangon
- India**
The Japan Foundation, New Delhi
URL: <http://www.jfindia.org.in/>
(English)
- Australia**
The Japan Foundation, Sydney
URL: <http://www.jpf.org.au/>
(English)
- Canada**
The Japan Foundation, Toronto
URL: <http://www.jftor.org/>
(English)
- U.S.**
The Japan Foundation, New York
Center for Global Partnership (NY)
URL: <http://www.jfny.org/>
(English)
- U.S.**
The Japan Foundation, Los Angeles
URL: <http://www.jfalac.org/>
(English)
- Mexico**
The Japan Foundation, Mexico
URL: <http://www.fjmex.org/>
(Spanish)
- Brazil**
The Japan Foundation, São Paulo
URL: <http://fjisp.org.br/>
(Portuguese)
- U.K.**
The Japan Foundation, London
URL: <http://www.jpf.org.uk/>
(English)
- Spain**
The Japan Foundation, Madrid
URL: <http://www.fundacionjapon.es/>
(Spanish/Japanese)
- Hungary**
The Japan Foundation, Budapest
URL: <http://www.japanalapitvany.hu/>
(Hungarian/English/Japanese)
- Russia**
The Japanese Culture Department
"Japan Foundation" of the All-Russia State
Library for Foreign Literature
URL: <http://www.jpfmw.ru/>
(Russian/Japanese)
- Egypt**
The Japan Foundation, Cairo

- Vietnam**
The Japan Foundation Center for
Cultural Exchange in Vietnam
URL: <http://jpf.org.vn/>
(Vietnamese/English/Japanese)
- Cambodia**
The Japan Foundation Asia Center,
Phnom Penh Liaison Office
URL: <https://jfphn.org/>
(English)
- Laos**
The Japan Foundation Asia Center,
Vientiane Liaison Office
URL: <https://jfavt.la/>
(Laos/English)

Affiliated organizations and branch in Japan

The Japan Foundation Japanese-Language Institute, Urawa

5-6-36 Kita-Urawa, Urawa-ku Saitama City, Saitama, 330-0074, Japan
Phone: 81-48-834-1180 Fax: 81-48-834-1170
URL: <http://www.jpf.go.jp/e/urawa/index.html>

Library
Phone: 81-48-834-1185 Fax: 81-48-830-1588
URL: http://www.jpf.go.jp/e/urawa/e_library/e_library.html

The Japan Foundation Japanese-Language Institute, Kansai

3-14 Rinku Port Kita, Tajiri-cho, Sennan-gun, Osaka, 598-0093, Japan
Phone: 81-72-490-2600 Fax: 81-72-490-2800
URL: http://www.jfkc.jp/index_en.html

Library
Phone: 81-72-490-2605 Fax: 81-72-490-2805
Website: <http://www.jfkc.jp/en/library/>

The Japan Foundation Kyoto Office

3rd Floor, Kyoto International Community House, 2-1 Torii-cho, Awataguchi, Sakyo-ku Kyoto, 606-8436, Japan
Phone: 81-75-762-1136 Fax: 81-75-762-1137
URL: <http://www.jpf.go.jp/e/world/kyoto.html>

Committees (FY2017)

The persons listed below act as members for the Japan Foundation's committees (In alphabetical order, names listed without honorifics, titles, and positions as of FY2017)

Advisory Committee for The Japan Foundation

- Keiko Chino**
Guest Columnist, The Sankei Shimbun
- Yuichi Hosoya**
Professor, Faculty of Law, Keio University
- Satoshi Ikeuchi**
Associate Professor, Research Center for Advanced Science and Technology, The University of Tokyo
- Makoto Iokibe**
Chancellor, Prefectural University of Kumamoto; President, Hyogo Earthquake Memorial 21st Century Research Institute
- Shin Kawashima**
Professor, Graduate School of Arts and Sciences, The University of Tokyo
- Fumiaki Kubo**
Professor, Graduate Schools for Law and Politics, The University of Tokyo
- Amon Miyamoto**
Stage Director
- Taeko Nagai**
Director, Setagaya Arts Foundation; President, Japanese Centre of International Theatre Institute
- Kumiko Sakoda**
Professor (Special Appointment), International Exchange Group, Department of International Affairs, International Office, Hiroshima University
- Akira Tatehata**
President, Tama Art University; Director, The Museum of Modern Art, Saitama
- Yasushi Watanabe**
Professor, Faculty of Environment and Information Studies, Keio University

American Advisory Committee for Japanese Studies

- E. Taylor Atkins**
Northern Illinois University (History and Music)
- William Bodiford**
University of California, Los Angeles (Religious Studies)
- Daniel Botsman**
Yale University (History)
- Michael Bourdaghs**
University of Chicago (Literature)
- Andrew Gordon**
Harvard University (History)
- Eiko Ikegami**
The New School (Sociology)
- R. Keller Kimbrough**
University of Colorado Boulder (Literature)
- Patricia Maclachlan**
University of Texas at Austin (Political Science)
- Laura Miller**
University of Missouri–St. Louis (Anthropology)
- Mari Noda**
Ohio State University (Linguistics and Linguistics Education)
- Ann Sherif**
Oberlin College (Literature)
- Mike Smitka**
Washington and Lee University (Economics)
- Gennifer Weisenfeld**
Duke University (Art History)
- Steven Vogel**
University of California, Berkeley (Political Science)
- Christine Yano**
University of Hawaii at Manoa (Anthropology and Cultural Studies)

Advisory Committee of the Maison de la culture du Japon à Paris

- From France
- Paul Andreu**
Architect
- Jean-Louis Beffa**
Honorary Chairman, Saint Gobain
- Augustin Berque**
Retired Professor, L'École des Hautes Etudes en Science Sociales (EHESS)
- Philippe Faure**
Former French Ambassador to Japan
- André Larquié**
Honorary Director, Châtelet Theatre
- Jean Maheu**
Honorary Director, Théâtre de la Ville
- Jean-Robert Pitte**
Chairman, French Geographical Society
- Christian Sautter**
Former Minister of the Economy, Finance and Industry

- Louis Schweitzer**
General Commissioner, The General Commissariat for Investments
- Diane de Selliers**
President, Diane de Selliers Press

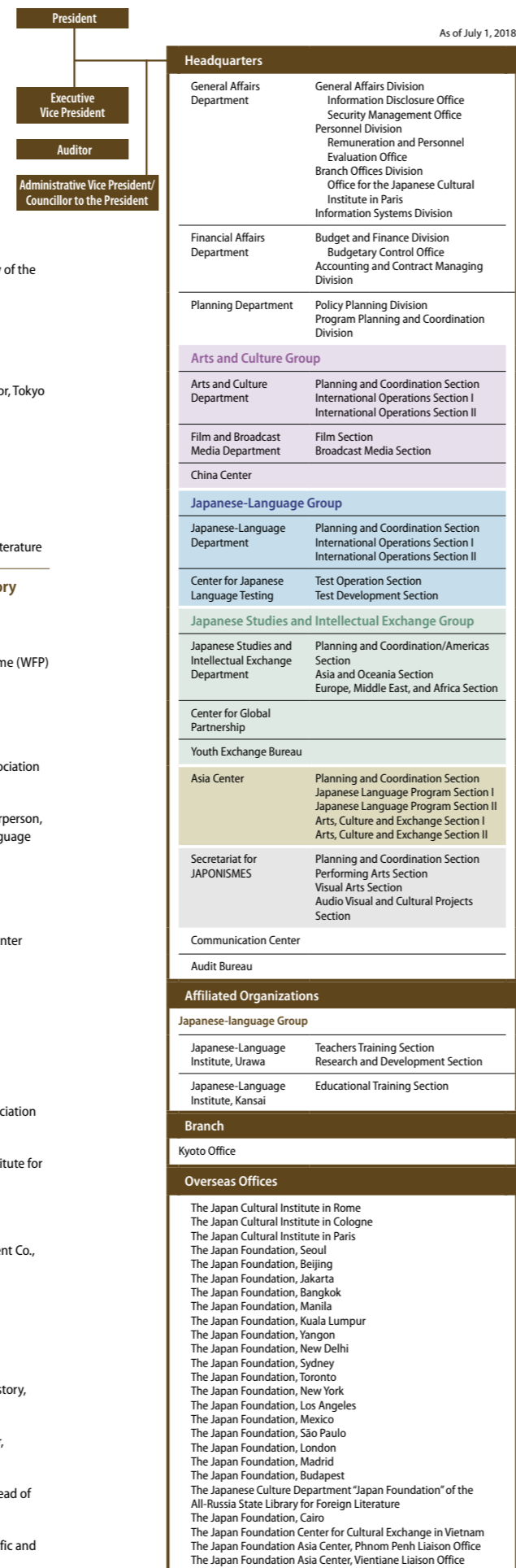
- From Japan
- Reiko Hayama**
Architect
- Atsushi Horiba**
Chairman and Group CEO, Horiba, Ltd.
- Junji Ito**
Art Critic; Administrative Professor, Tokyo University of the Arts Public Collaboration Center
- Yasuo Kashiwakura**
Professor Emeritus, The Open University of Japan
- Koichiro Matsuura**
Former Director-General of UNESCO
- Toru Nishigaki**
Professor Emeritus, The University of Tokyo; Professor, Tokyo Keizai University
- Anna Ogino**
Author; Professor, Faculty of Letters, Keio University
- Shigeo Ohyagi**
Chairman of the Board, TEIJIN LIMITED
- Tadayasu Saki**
Director, Setagaya Art Museum
- Noboru Tsujihara**
Novelist; Director, Kanagawa Museum of Modern Literature

The Japan Foundation Asia Center Advisory Committee

- From Japan
- Kurara Chibana**
Model; Ambassador of Japan, World Food Programme (WFP)
- Michiko Hasegawa**
Professor Emeritus, Saitama University
- Toshiyuki Inoko**
CEO, teamLab Inc.
- Hiroshi Inoue**
Chairman, The Japan Commercial Broadcasters Association (JBA)
- Eriko Ishii**
Professor, Tokyo Women's Christian University; Chairperson, The Society for Teaching Japanese as a Foreign Language
- Masaya Kato**
Actor
- Junko Koshino**
Designer
- Masaaki Miyasako**
Professor, Tokyo University of the Arts; Japanese Painter
- Jay Sakomoto**
President, Shochiku Co., Ltd.
- Shingo Torii**
Vice Chairman of the Board, Suntory Holdings Ltd.
- Masayuki Yamauchi (Chairperson)**
Professor Emeritus, The University of Tokyo

- From ASEAN
- Dato Paduka Hamdillah H A Wahab**
(Brunei) Chairperson, Brunei-Japan Friendship Association (BJFA)
- Pou Sothirak**
(Cambodia) Executive Director, The Cambodian Institute for Cooperation and Peace; Government Advisor
- Riri Riza**
(Indonesia) Film Director
- Thavixay Saythilath**
(Laos) Singer; General Manager, Kaona Entertainment Co., Ltd.
- Datuk Lat**
(Malaysia) Cartoonist
- Lahpai Seng Raw**
(Myanmar) Founder and Former Director, Metta Development Foundation
- Ambeth R. Ocampo**
(Philippines) Associate Professor, Department of History, Ateneo de Manila University
- Goh Ching Lee**
(Singapore) Founder, Executive and Artistic Director, CultureLink Singapore
- Kitti Prasirtsuk**
(Thailand) Vice President, Thammasat University (Head of International Affairs)
- Nguyen Van Chinh**
(Vietnam) Associate Professor, Center for Asian-Pacific and International Studies, Vietnam National University

Organization



Resources

Main website and social media

The Japan Foundation provides a wealth of information and resources online, including information about our programs and upcoming events, how to apply to participate in various programs on the Japan Foundation website, Japanese-language learning materials, past survey reports, and links to our overseas offices.

The Japan Foundation official website

<http://www.jpf.go.jp/e/>



The Japan Foundation official social media

Facebook



<https://www.facebook.com/TheJapanFoundation>

Twitter



<https://twitter.com/japanfoundation>

Web magazine

Wochi Kochi Magazine

<https://www.wochikochi.jp/english/>



Program-specific websites

Arts and Cultural Exchange

[Performing Arts Network Japan](#)

[Worth Sharing - A Selection of Japanese Books Recommended for Translation](#)

[Japanese Book News](#)

[Japanese Literature in Translation Search List Search](#)

[Japanese Film Database](#)

The Japan Foundation China Center

[Heart to Heart](#)



Japanese-Language Education

[Survey on Japanese-Language Education Abroad](#)

[Search for institutions offering Japanese-language education](#)

[Country and Regional Information](#)

[The Japan Foundation Japanese-Language Education Bulletin](#)

Japanese-Language Proficiency Test (JLPT)



Support for Japanese-language teachers

["Let's teach Japanese in the world!"](#)

[Minna no Kyozaï Website](#)

[Minna no Can-do Website](#)

[JF Standard for Japanese-Language Education](#)

[Nihongo Kyoiku Tsushin](#)

Support for Japanese-Language learners (e-learning)

● ["JF Japanese e-Learning Minato"](#)

● ["Hirogaru, get more of Japan and Japanese"](#)

● [NIHONGO-e-NA](#)

(iOS: <http://nihongo-e-na.com/ios>)

(Android: <http://nihongo-e-na.com/android>)

[Nihongo de Care-Navi](#)

(Smartphone: <http://nihongodecarenavi.net/sp>)

Japanese in Anime & Manga

[Erin's Challenge! I can speak Japanese. \(online version\)](#)

[Challenge with Erin -Japanese Language Test-](#)

[Marugoto: Japanese language and culture](#)

[Marugoto+](#)

[MARUGOTO Words](#)

(Smartphone: <http://words.marugotoweb.jp/sp>)

[HIRAGANA/KATAKANA Memory Hint](#)

[KANJI Memory Hint 1&2](#)

The Japan Foundation Center for Global Partnership

[The Japan Foundation Center for Global Partnership](#)



Abe Fellowship Program

[JOI Program](#)

[CGP Grant Program](#)

[CULCON \(US-Japan Conference on Cultural and Educational Interchange\)](#)

The Asia Center

[The Asia Center Official Website](#)



[The Asia Center Official Facebook](#)



[The Asia Center Official Twitter](#)



["NIHONGO Partners" Program \(Official Facebook\)](#)

The Japan Foundation Library

The Japan Foundation Library has a highly specialized collection of materials related to international cultural exchange and Japanese culture. The collection includes about 38,000 books, 500 periodicals, and 800 audio-visual materials. The library staff works conscientiously to help researchers and the general public find the information and materials they need.

Open: Monday-Friday, 10:00 a.m.-7:00 p.m.

Closed: Saturdays, Sundays, national holidays, the last day of each month, year-end and New Year's period, inventory-taking days

Contact: lib@jpf.go.jp

History of the Japan Foundation

- 1972 ● The Japan Foundation established
- 1973 ● The Japan Foundation Awards established
- 1984 ● Japanese-Language Proficiency Test launched
- 1989 ● The Japan Foundation Japanese-Language Institute, Urawa established in Saitama Prefecture
- 1991 ● The Japan Foundation Center for Global Partnership established
- 1997 ● The Japan Foundation Japanese-Language Institute, Kansai established in Osaka Prefecture
- 2003 ● The Japan Foundation became an "independent administrative institution"
- 2006 ● The Japan Foundation China Center established
- 2014 ● The Japan Foundation Asia Center established
- 2016 ● Secretariat for JAPONISMES established