



THE JAPAN FOUNDATION

2020 - 2021  
ANNUAL REPORT

# Cultivating friendship and ties between Japan and the world

Through culture, language and dialogue, the Japan Foundation creates opportunities to foster friendship, trust and mutual understanding between Japan and other countries/regions.

The Japan Foundation is Japan's only institution dedicated to carrying out comprehensive international cultural exchange programs throughout the world. The three major focuses of our activities are Arts and Cultural Exchange, Japanese-Language Education Overseas, and Japanese Studies and Intellectual Exchange. The Japan Foundation has a global network consisting of the Tokyo Headquarters, the Kyoto Office, two affiliated organizations (the Japan Foundation Japanese-Language Institute, Urawa; and the Japan Foundation Japanese-Language Institute, Kansai) and 25 overseas offices (including two Japan Foundation Asia Center Liaison Offices). We are working to facilitate exchange in a variety of fields with the aim of further deepening mutual understanding and ties between Japanese people and the world.

## Culture

### Arts and Cultural Exchange

Coming into contact with arts and cultures from other countries generates and stimulates people's interest and empathy beyond language barriers. By introducing diverse aspects of Japanese arts and culture to people around the world, we bring people closer together.

## FIELDS

## Language

### Japanese-Language Education Overseas

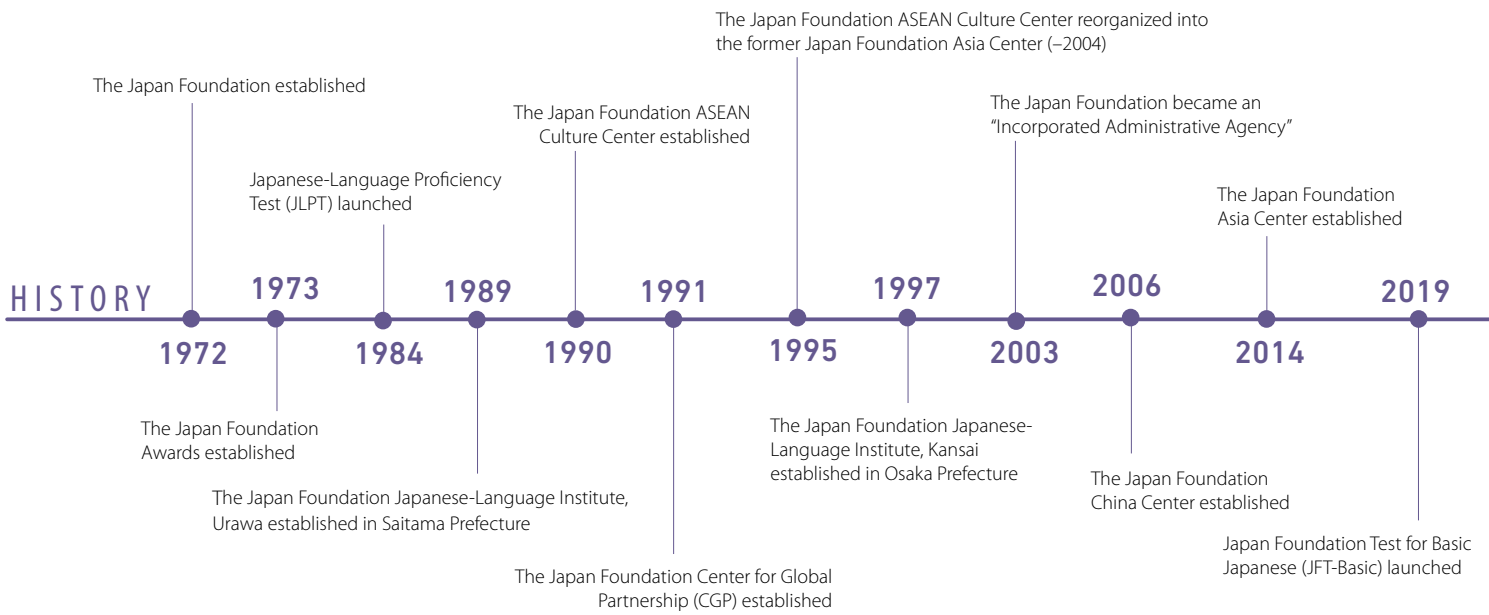
Teaching the Japanese language to people outside Japan helps to increase their interest in and understanding of Japan. We work to enhance Japanese-language learning environments around the world to provide more people with opportunities to study Japanese.

The Japan Foundation develops programs in three different fields—Arts and Cultural Exchange, Japanese-Language Education Overseas, and Japanese Studies and Intellectual Exchange.

## Dialogue

### Japanese Studies and Intellectual Exchange

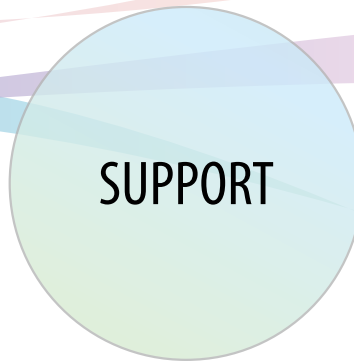
The enhancement of Japanese studies overseas will lead to deeper mutual understanding between Japan and other countries. The Japan Foundation also promotes intellectual exchange through symposia and collaborative projects pertinent to global issues.



# APPROACHES

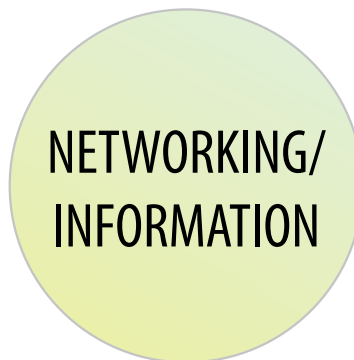


The Japan Foundation plans and organizes exhibitions, stage performances and international conferences. We also create programs that invite cultural leaders to Japan to foster networking and provide hands-on experiences in Japan.



The Japan Foundation supports people who are active in a wide range of cultural fields and creates opportunities and environments that enable continuous interchanges.

The Japan Foundation supports people actively engaged in cultural exchange by partial funding and the provision of useful tools, opportunities and venues.



Gathering the information and materials needed by people active in cultural exchange and helping them to develop personal networks, the Japan Foundation is continually building the foundations of international cultural exchange and expanding its outreach.

# THE JAPAN FOUNDATION ANNUAL REPORT 2020-2021

## Contents

- P1 About the Japan Foundation
- P4 Message from the President

### **The Activities of the Japan Foundation**

- P5 Culture: Arts and Cultural Exchange
- P9 Language: Japanese-Language Education Overseas
- P13 Dialogue: Japanese Studies and Intellectual Exchange
- P17 The Japan Foundation Asia Center
- P20 Other Initiatives
- P21 2020 Overseas Office Initiatives

### **Data**

#### Program Activity Summaries

- P23 Summary of Arts and Cultural Exchange Programs
- P24 Summary of Japanese-Language Education Overseas Programs
- P25 Summary of Japanese Studies and Intellectual Exchange Programs
- P26 Summary of the Japan Foundation Asia Center Programs
- P27 Financial Cooperation from the Private Sector
- P29 Financial Statements
- P32 The Japan Foundation's Global Network
- P33 Committees / Organization
- P34 Websites and Social Media



## Message from the President

One year has passed since I assumed the duties of President of the Japan Foundation in October 2020.

To the present, the Japan Foundation has fostered bonds with the world by comprehensively undertaking international cultural exchange programs in countries worldwide, centered on the three major fields of Arts and Cultural Exchange, Japanese-Language Education Overseas, and Japanese Studies and Intellectual Exchange. Nonetheless, the Japan Foundation faced its greatest challenge since its establishment as the impact of the global-wide spread of COVID-19 from the beginning of 2020 inevitably forced us to cancel or postpone the implementation of most programs involving the movement of people across national borders and the gathering of large numbers of people.

While repeatedly seeking ways to continue conveying the appeal of Japanese culture to the world and to unceasingly implement exchanges with people in every country under these adverse circumstances, the Japan Foundation actively implemented programs online. These included *STAGE BEYOND BORDERS – Selection of Japanese Performances –*, a program featuring the online distribution of outstanding Japanese stage performances with multilingual subtitles, as well as the livestreaming of roundtable discussions among Japanese writers and translators in multiple languages. At the same time, in countries where conditions permitted, the Japan Foundation held actual traveling exhibitions of art works and screenings of Japanese films while implementing all possible measures to prevent COVID-19 infections.

Turning to the field of Japanese-Language Education Overseas, the Japan Foundation enhanced the content of *Irodori: Japanese for Life in Japan*, a web-based teaching material for enabling foreign nationals to acquire the basic Japanese communication skills needed for living in Japan, and promoted the use of *JF Japanese e-Learning Minato*, a Japanese-language learning platform. Of particular note, *Irodori* has been able to meet the wide-ranging demand for at-home learning of Japanese by making available all teaching materials and audio data for download on its website free of charge. Additionally, the Japan Foundation Test for Basic Japanese (JFT-Basic) for measuring the level of Japanese-language proficiency required to obtain the residency status of “Specified Skilled Worker (i),” which was newly established in April 2019, has been steadily implemented in Mongolia, Indonesia, Cambodia, Thailand, the Philippines, Myanmar and Nepal, and commenced in Japan in March 2021.

Additionally, we launched emergency support projects in consideration of the many non-profit organizations that lead the way in fostering exchanges with Japan, such as the Japan America Society in regions across the United States, that are being economically affected by COVID-19. We also undertook online follow-up projects for participants in collaborative research workshops for scholars in Japanese Studies that have been implemented since fiscal 2018 with the aim of fostering next-generation Japanese Studies scholars. In making these efforts, the Japan Foundation focused closely on what it must do at the present time and worked to implement programs in a timely manner taking a long-term perspective.

Presently, there are emerging signs that various pandemic restrictions are being eased in countries worldwide along with an increase in vaccinations. That said, there are still many countries suffering from a growing number of cases and the situation remains unpredictable. While carefully monitoring the circumstances in each country, we would like to start from wherever we can and proceed with the resumption of irreplaceable real programs such as those involving face-to-face interchanges among people and stage performances where we dispatch artists to the actual location of venues. Amid these unique circumstances resulting from the COVID-19 pandemic, online communication has rapidly permeated the world and is now part of our new everyday lives, with a sense that national boundaries and physical distances have been eliminated abruptly. As we further expand and enhance initiatives for online programs that have proven their worth in allowing the participation of people from countries and regions that were previously difficult to reach, we will continue to value unchanging person-to-person interchanges even under such circumstances and strive to realize new forms of exchanges in the post-COVID period through an appropriate balance and combination of face-to-face and online exchanges.

The Japan Foundation will continue its creative initiatives for making a huge leap forward in the run-up to 2022, when we celebrate the 50th anniversary of our founding. I look forward to your continued understanding and support.

UMEMOTO Kazuyoshi  
President  
The Japan Foundation  
November 2021

# Culture

## Arts and Cultural Exchange

Coming into contact with arts and cultures from other countries generates and stimulates people's interest and empathy beyond language barriers.

By introducing diverse aspects of Japanese arts and culture to people around the world, we bring people closer together.





# Presenting Japan's Diverse Arts and Culture Overseas

We carry out numerous projects to introduce to people around the world the diverse charms of Japanese culture, from traditional to contemporary arts, including theater performances, art exhibitions, literary events, film screenings and television broadcasts. Even during the COVID-19 pandemic, when it has become difficult for people to travel back and forth for face-to-face exchanges and hold events where people gather, we worked to deliver Japanese culture and arts to an even broader audience and deepen exchanges with people from each country by utilizing online communications.



©Nobuaki Takekawa Courtesy of Ota Fine Arts  
Nobuaki Takekawa *Cat Olympics: Opening Ceremony, 2019* from the exhibition *Relay to Tokyo—Inheriting and Gathering* (Greece)

With many of the planned programs forced to be cancelled or postponed successively due to COVID-19, *Relay to Tokyo—Inheriting and Gathering*, an exhibition of contemporary art from Japan, was held in Athens, Greece for two months from July 2020 in conjunction with the torch handover ceremony for the Tokyo 2020 Olympics and Paralympics. As various restrictions remained in place, the artists and the curator operated the exhibition remotely from Japan. Approximately 5,000 people, including the President of Greece, visited the exhibition, which opened four months later than originally planned as maximum measures were implemented to prevent the spread of the virus.

At the same time, we planned various new online programs to respond to circumstances under COVID-19. These included *STAGE BEYOND BORDERS – Selection of Japanese Performances –*, a project to showcase high quality Japanese contemporary theater, dance performances and traditional performing arts works online; *11 Stories on Distanced Relationships: Contemporary Art from Japan*, an online-only Japanese contemporary art exhibition featuring 11 artists who delve into the timely theme of “distance between the surrounding world”; *Beyond the Lines*, a video series that introduces the activities and the daily lives of six Japanese artists during the COVID-19 pandemic; a short video distribution series about two of the traveling exhibitions *Yokai Parade: Supernatural Monsters from Japan* and *The Superlative Artistry of Japan*; the Translators’ Roundtable Series *More than Worth Sharing*, in which translators of contemporary Japanese literary works in various countries talk with the authors; and Webinar Series – *130 Years of Public Japanese Gardens* that introduces the charm of Japanese gardens across the Americas from various perspectives. All of these programs attracted large numbers of viewers and resonated strongly with audiences, highlighting the highly enthusiastic response to our online programs.

In addition to the above, we expanded various resources to support future exchanges in anticipation of the resumption of “real” in-person programs after the subsiding of COVID-19. This included enhancing our program lineup by creating new exhibitions for traveling around the world and upgrading our database *Japanese Literature in Translation Search* with the help of librarians and scholars in various countries.



*STAGE BEYOND BORDERS – Selection of Japanese Performances –*  
Online distribution of Japanese stage performances



*More than Worth Sharing* 5th Translators’ Roundtable  
(Murata Sayaka’s *Convenience Store Woman*)



# JAPANESE FILM FESTIVAL ONLINE 2020-2021

The first ever JAPANESE FILM FESTIVAL ONLINE spanned five continents and 20 countries. A total of 30 Japanese films, from new releases to classics, were broadcast free of charge, receiving over 210,000 views around the world. At a time when movie theaters in many areas were closed due to the pandemic, the festival was able to share Japanese cinema with the world on a scale never before achieved. The variety of films presented, as well as special interviews with directors, made this festival a well-received success.



Japanese Film Website JFF+ (<https://jff.jp/jp/>)



The production team of the film *A Story of Yonosuke* appeared at the Tencent Video online guest talk (front row left: Leading actor KORA Kengo, Director OKITA Shuichi, back row: Producer NISHIGAYA Toshikazu).



A screening of new Japanese films co-sponsored by Broadway Cinematheque Moma at the Chengdu Palace Cinema

## Japanese Film Exchange Program in China

To secure opportunities for the screening of Japanese films widely across China, including in regional cities, the Japan Foundation screened Japanese films in nine cities, where these films were viewed by more than 11,000 people. Additionally, with co-sponsoring by Tencent Video, a prominent Chinese video streaming platform/website, in June 2020 a total of 61 Japanese film works were distributed on their special webpage, and the number of views exceeded 2.34 million.



Kuragehime

## Introducing Japanese Television Programs

We implement projects for introducing Japanese television programs that promote an understanding of Japan in countries and regions where there is difficulty in broadcasting Japanese content. In FY2020, 583 Japanese television programs, including dramas, anime, variety shows, films and documentaries, were broadcast in 83 countries and regions.



KamiTunes



The Three Generations of the Nomura Kyogen Family Mansaku, Mansai and Yuki: Divine Dance in Paris



# The Japan Foundation China Center

The Japan Foundation China Center works to enhance mutual understanding between Japan and China by deepening cultural exchange primarily between youths, who play a key role in the future of the two countries, and by providing them with opportunities to experience each other's cultures and lives in each other's countries. Xin Lian Xin ("Heart to Heart" in Chinese)- this is our slogan. The Japan Foundation China Center will continue to implement projects that emphasize interactivity and collaboration, and seek to build deeper, longer-term emotional ties.



Students from Mie High School and Luoyang Foreign Language School discuss school life.



Students from Xi'an Foreign Language School affiliated with Xi'an International Studies University and students from Wakayama Prefectural Hashimoto High School introduce each other's local tourist spots.

## Program for Dialogue and Collaboration between Japanese and Chinese High School Students

The COVID-19 pandemic continues to make it difficult to hold international exchanges involving travel and the Long-Term Exchange Program for Chinese High School Students, which was held annually, had to be cancelled. Under these circumstances, in 2020 we newly established the Program for Dialogue and Collaboration between Japanese and Chinese High School Students. This program aims at fostering a sense of solidarity and cooperation among the youth of both nations by utilizing online communications for dialogue and collaboration to enable high school students from Japan and China to deepen their mutual understanding of each other's culture and society and to solve shared problems such as school life and community issues.

## Centers for "Face-to-Face Exchanges" in China

Centers for "Face-to-Face Exchanges" are established in universities and other institutions in regional cities around China where opportunities to meet Japanese people and gain information about Japan are relatively limited. The centers provide venues where visitors can experience contemporary Japanese culture by browsing, viewing and listening to the latest magazines, books, visual materials and other contents from Japan while enabling young people from both countries to interact via various events. Furthermore, a wide variety of Japan-China exchange events are held in addition to utilizing online formats such as online seminars on Japanese culture by experts from both countries.



FY2020 summer festival at Chengdu Center for "Face-to-Face Exchanges" co-sponsored by a local Japanese language school



An online exchange project (Jinan Center for "Face-to-Face Exchanges") jointly planned and operated by the Wakayama University student group "Reiwa Kishu Han" and students from Shandong Normal University

## Network Strengthening Programs

We implement a variety of programs emphasizing collaborative work with the aim of building networks among young people who will be the future bearers of Japan-China exchanges. In FY2020 as well, we held online the University Student Exchange Program in which university students from both countries collaborate in planning, organizing and holding events that introduce Japanese culture along with a program for dialogue on common issues as well as "RLEAD ASIA," an exchange program in which students from both countries engage in discussions using business as a pathway. We also operate the bilingual Japanese-Chinese "Heart to Heart" program website.

# Language

## Japanese-Language Education Overseas

Teaching the Japanese language to people outside Japan helps to increase their interest in and understanding of Japan. We work to enhance Japanese-language learning environments around the world to provide more people with opportunities to study Japanese.



Left: Given Award from the Ministry of Education, Thailand for long years of contributions to secondary-level Japanese-language education.  
Center: Irodori public relations mascot character: Iro-Oni (Cambodia)  
Right: Japanese-language education seminar "How to Teach Elementary Kanji" (Laos/Thailand)



# Japanese-Language Education Online

With face-to-face programs and opportunities to visit Japan lost due to the impact of COVID-19, the Japan Foundation newly implemented the following programs online.

## Implementing Programs Online

With the spread of COVID-19 making it difficult to hold face-to-face programs, the Japan Foundation implemented a variety of online programs in regions throughout the world. Participants from across the world, regardless of where they reside, engaged in exchanges transcending national boundaries and regions via the Internet. The Japan Foundation Japanese-Language Institute, Kansai held three online seminars for people involved in Japanese-language education in Japan and overseas who are aiming to transition to online classes or produce video teaching materials. (A total of 662 people from 51 countries/regions participated.)



The instructor explained in detail how to produce various video teaching materials.



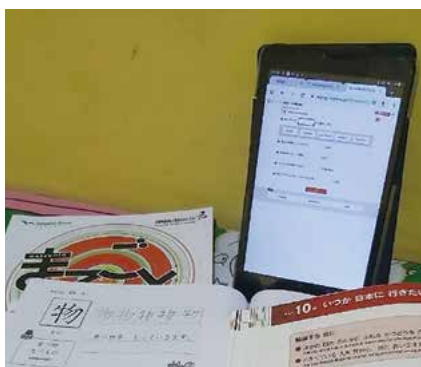
Studio at the Japan Foundation Japanese-Language Institute, Kansai

## Development and Operation of e-Learning

The Japanese-language learning platform *JF Japanese e-Learning Minato* provides self-taught students a venue for learning. Driven by growing demand for online education amid the COVID-19 pandemic, the total number of registered users increased by more than 80,000 from the previous year to 225,340 people in 198 countries and regions around the world. Additionally, the website *MARUGOTO Plus* provides an abundance of video teaching materials in conjunction with *Marugoto: Japanese Language and Culture*, a teaching material produced by the Japan Foundation, and the number of page views increased by 75% from the previous year.



Image of a live lesson taken at *Minato*



Online learning using *Minato* and *Marugoto*

## Expanding Japanese-Language Learning Opportunities through Workshops

To broaden the base of overseas Japanese-language learners, the Japan Foundation held online workshops tailored to the needs of various corners of the world. The Japan Foundation, Sydney took a popular theme *furoshiki* from its Centre Visit program (cultural experience workshops using Japanese language) in order to develop "Online



*Furoshiki* Workshops". The Japan Foundation, London held "Kobanashi Workshop for Educators" on incorporating "kobanashi (anecdotes)" into Japanese-language education, which also contributed to the building of a network among workshop participants.

Online *Furoshiki* Workshop (Australia)

## Online Content Production

Responding to rising demand amid the spread of COVID-19, The Japan Foundation, Seoul in collaboration with the Japanese Language and Literature Association of Korea and Korea Japanese Teacher's Association, produced one new content item for higher education and two new content items for secondary education and distributed these free of charge to Japanese-language teachers. The Japan Foundation, Mexico held a contest for creating learning materials targeting Mexico and the Caribbean region of Central America and displayed six works that passed the first



screening on its website under the supervision of a Japanese-language specialist.

"Online Japanese Education Content" for Korean higher education institutions  
Planning/Production: Japanese Language and Literature Association of Korea

# Establishing Environments for Japanese-Language Education Overseas

Even with the various effects of the COVID-19 pandemic, the Japan Foundation carried out the following programs to promote the establishment of Japanese-language education environments in each country and region to ensure that high-quality Japanese-language education continues to be widely implemented.

## Dispatch of Japanese-Language Specialists

The Japan Foundation dispatched Japanese-Language Specialists and Japanese-Language Assistants to overseas universities and educational institutions (42 countries, 121 posts). We also provided training to local Japanese-language teachers, gave advice on preparing teaching materials and Japanese-language teaching methods, supported the formation of networks among teachers and visited educational institutions to offer guidance. In addition, we implemented teacher seminars and Japanese-language courses online to support Japanese-language education.



A Kimono-wearing class by a Japanese-Language Assistant (Australia)



Online Basic Training Program for Teachers of the Japanese-Language (Autumn)

## Training for Overseas Japanese-Language Teachers

For those overseas Japanese-language teachers deprived of the opportunity to visit Japan for training at the Japan Foundation Japanese-Language Institute, Urawa due to the COVID-19 pandemic, we implemented online courses to offer a portion of the contents originally planned for onsite courses/programs using live lessons and newly created on-demand teaching materials. Based on the evaluation and results of these online training courses, we will set some themes related to Japanese-language teaching methods as a new recruitment program in the next fiscal year and have decided to implement online training.

## Support for Japanese-Language Education Institutions

Besides conventional support programs, the Japan Foundation provided special support programs to promote the development of online programs for JF Nihongo Network ("Sakura Network") members and Japanese-language educational institutions around the world struggling to respond to the circumstances arising from COVID-19.

\*"Sakura Network" members are core Japanese-language educational institutions/organizations located in each country. As of March 31, 2021, the membership included 292 institutions in 93 countries/regions.



The First Japanese Singing/Reading Contest (Timor-Leste)



Smiling Korean high school students at the Lee Soo-Hyun Youth Exchange Program Online Completion Ceremony

## Training Programs for Overseas Learners

As visiting Japan is difficult under the current circumstances, the Japan Foundation Japanese-Language Institute, Kansai implemented online training for overseas Japanese-language learners. Under the Lee Soo-Hyun Youth Exchange Program, the Institute also established a virtual venue where Korean high school students can interact with Japanese young people and host families. Additionally, the Institute provided individual guidance online and as well as opportunities for the practical use of Japanese to overseas scholars requiring specialized Japanese-language proficiency.

## Pre-Arrival Japanese-Language Training Based on EPAs

In November 2019, the Japan Foundation started preparatory pre-arrival Japanese-language training (6 months) for nurses and certified care worker candidates from Indonesia and the Philippines (642 in total in both countries). The aim is to enable these persons to acquire the Japanese-language proficiency necessary for employment after arrival in Japan. However, this program was suspended in March 2020 due to the spread of COVID-19. Because these candidates' travel to Japan was postponed, the Japan Foundation implemented follow-up training online to prevent their Japanese-language proficiency from deteriorating. Moreover, six-month preparatory pre-arrival training for new candidates (501 in total in both countries) was started online in February (Indonesia) and March (Philippines) 2021, respectively.



EPA Online Training (Indonesia)



# Enhancing Overseas Japanese-Language Teaching Methods and Proficiency Assessments of Japanese-Language Learners

To promote Japanese language, the Japan Foundation provided new teaching methods and learning materials and implemented the Japan Foundation Test for Basic Japanese (JFT-Basic) in addition to the Japanese-Language Proficiency Test (JLPT) for Japanese-language learners.



Marugoto: Japanese Language and Culture is also used in online classes (Vietnam).

## Disseminating Information about Japanese-Language Teaching Methods and Providing Learning Materials

To promote the use of the JF Standard for Japanese-Language Education\*, the Japan Foundation disseminated information via websites, SNS and other means and enhanced the content of the standard-compliant teaching material *Marugoto: Japanese Language and Culture* and *Irodori: Japanese for Life in Japan*.

Regarding *Marugoto*, we published an e-book version of all levels and also published *Starter* in

China and Myanmar, *Pre-Intermediate* in India, *Pre-Intermediate* and *Intermediate 1* in Vietnam, and *Intermediate 2* in Indonesia and Korea. Furthermore, we have added support materials in many languages on the *Marugoto* website.

\*A framework developed by the Japan Foundation for considering ways to learn and teach the Japanese language and make evaluations based on the concept of the Common European Framework of Reference for Languages (CEFR). In keeping with the philosophy of "Japanese for mutual understanding," it aims to cultivate "competence in accomplishing tasks" and "competence in intercultural understanding."



Marugoto: Japanese Language and Culture is published in various countries.

## Implementing Tests to Evaluate Japanese-Language Proficiency

Launched in 1984, the Japanese-Language Proficiency Test (JLPT) is the world's most popular Japanese test targeting non-native Japanese speakers. JLPT July 2020 was cancelled both in Japan and overseas, as we gave top priority to assuring the safety of examinees and other people concerned in holding the test. In JLPT December 2020, tests were held in three additional countries, including Tunisia, the Dominican Republic and Turkmenistan, and two additional cities that include Karur (India) and Petropavlovsk-Kamchatsky (Russia). The test was held in a total of 137 cities in 29 countries/regions, including Japan (47 prefectures).



JLPT held in Ashgabat (Turkmenistan)



JFT-Basic logo

Commenced in April 2019, the JFT-Basic is a computer-based test to measure the Japanese-language proficiency needed by foreign nationals about to reside in Japan mainly for work, to communicate in everyday life situations. In FY2020, tests were newly begun in Thailand and Japan. In addition, test locations were expanded from two cities to five cities in Indonesia, where there is a high need for this test. As a result, a total of 17,582 persons (7,971 persons in the previous fiscal year) took this test in 13 cities in 7 countries in Asia and in 47 prefectures in Japan.

## Japanese-Language Education Programs for New System of Acceptance of Foreign Human Resources

The Japan Foundation promoted initiatives in China, Mongolia, Indonesia, Cambodia, Thailand, the Philippines, Vietnam, Myanmar and Nepal to support the acquisition of Japanese-language proficiency by people aiming to live and work in Japan. In FY2020, the web-based Japanese-language teaching material *Irodori: Japanese for Life in Japan* developed in FY2019 was accessed by approximately 2.52 million people in Japan and overseas. Also, *Starter* has been translated into five languages and *Elementary 1* and *2* have been translated into seven languages and released free of charge.

In various countries, Japanese-language specialists and *Japanese for Life in Japan* coordinators introduced *Irodori* and provided training on how to hold classes using *Irodori*.



Web-based Japanese-language teaching material *Irodori: Japanese for Life in Japan*



Training for introducing *Irodori* for Japanese-language teachers in Phnom Penh (Cambodia)

# Dialogue

## Japanese Studies and Intellectual Exchange

The enhancement of Japanese Studies overseas will lead to deeper mutual understanding between Japan and other countries. The Japan Foundation also promotes intellectual exchange through symposia and collaborative projects pertinent to global issues.



Left: "Take care of Each Other," one of the prize-winning works of Mask Up 2020  
Center: Photo of wearing winning design masks (courtesy of Japan America Society of Colorado)  
Right: Abe Fellows Global Forum



# Japanese Studies Overseas and Intellectual Exchange

The Japan Foundation is supporting Japanese Studies in various countries to deepen understanding of Japan overseas. Moreover, we are conducting intellectual exchange projects for networking and to provide opportunities for dialogue and collaboration between persons in Japan and overseas, which we hope will contribute to resolving global issues.

The spread of COVID-19 has had a major impact also on Japanese Studies and Intellectual Exchanges. Most of the Japanese Studies Fellows have not been able to visit Japan. In institutions and networking support programs, projects that require travel have also had to be postponed or cancelled. At the same time, we have considered this step-in-time as a chance to rebuild networks among researchers and intellectuals who are usually too busy to gather in one place, by maximizing our use of online tools.

## *Alone Together — Reimagining International Exchange in Post-COVID Japan*

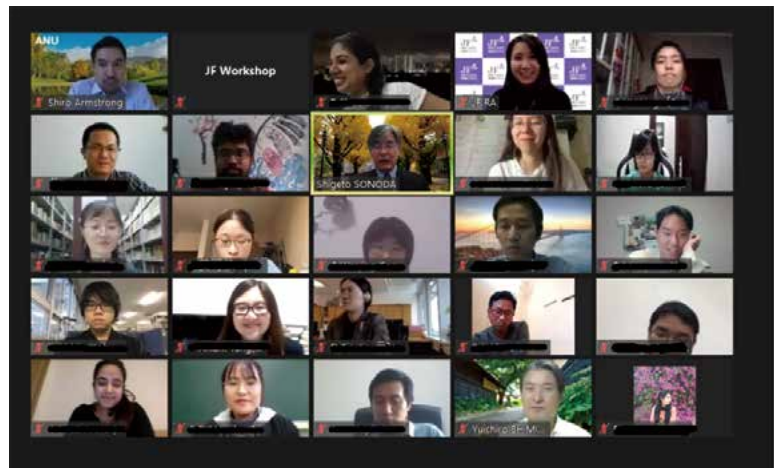
We have published a video series in which Japanese Studies Fellows who were invited from overseas discuss how the COVID-19 pandemic has affected and transformed Japanese society, based on their experiences living amid the pandemic in Japan as well as through their respective academic expertise. The series features a variety of topics in which these Japan specialists are engaged in, such as the diversity of Shinjuku, the circulation of used books in Jimbocho, the use of social media by Japanese youth or the Olympics and city planning.



Japanese Studies Fellows who took part in the video series. Starting from the first episode (top left), Dr. Nathaniel Smith, Ms. Susan Taylor, Ms. Kimberly Hassel, Dr. Marvin Sterling, Ms. Chiara Pavone, Ms. Louise Claire Wagner and the navigator Sahel Rosa

## The Collaborative Research Workshop for Aspiring Scholars in Japanese Studies: Online Follow-Up

Since FY2018, we have been organizing intensive workshops for graduate students of principal Japanese Studies institutions in Asia. We held a two-day follow-up workshop online in FY2020, with 20 past participants gathering together. Mediated by talks by lecturers from Japan, Hong Kong and Australia, the workshop provided an opportunity for a lively discussion on diverse collaborative research regardless of location or discipline, culminating in a final task of presenting topics for collaborative research.



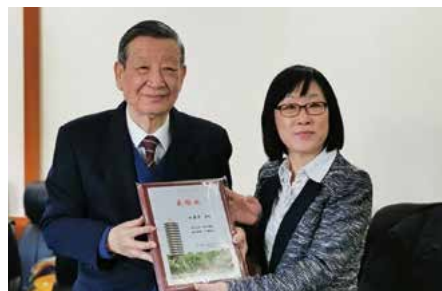
Roundtable/interactive Q&A session between the lecturers and students

## The 30th Anniversary Meeting of the Center for Contemporary Japanese Studies, Peking University

To commemorate the 30th anniversary of the Center for Contemporary Japanese Studies at Peking University, we co-hosted an online anniversary meeting with Peking University in December 2020. Commemorative speeches were given by INOKI Takenori (Professor Emeritus, Osaka University) and LIU Deyou (former Vice Minister of the Ministry of Culture of China). A total of 141 people attended the meeting, including graduates of the Center who are currently active in various fields in China as well as former professors from both Japan and China. We received many congratulations and gratitude for the 30th anniversary, and it was an important follow-up opportunity.



Commemorative speech entitled "Think Over the Meaning of Japanese Studies Again" by Prof. INOKI Takenori

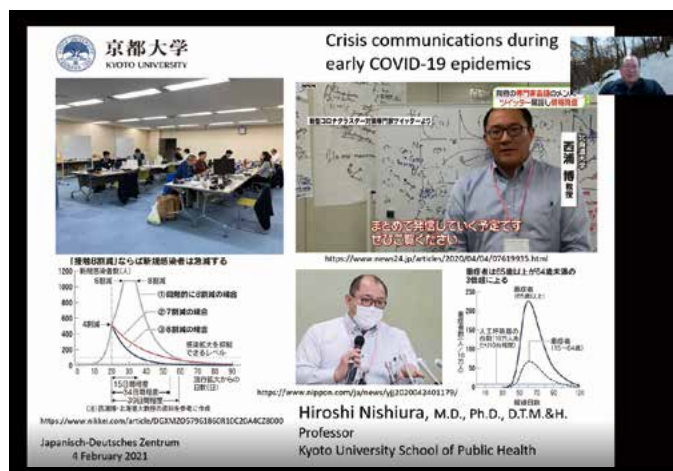


Prof. LI Hanmei, Chinese Senior Professor giving a certificate of appreciation to Prof. LIU Deyou

Former professors and graduates attending the online meeting

## Japan-German Symposium "Crisis Communication: Japanese and German Perspectives—Commemorating Ten Years after the Great East-Japan Earthquake"

In the spring of 2021, a decade after the Great East Japan Earthquake and amid the worldwide COVID-19 pandemic, Japanese and German specialists discussed how scientists, the government and the media should communicate in times of crisis. With the panelists sharing the two countries' experiences and different cultural backgrounds, the event presented a timely and lively discussion, rich with suggestions for the future, touching on comparisons of disaster and pandemic responses, fake news countermeasures and the importance of media literacy.



Keynote speech by NISHIURA Hiroshi (Professor, Kyoto University)



Discussion between Japanese and German specialists



# The Japan Foundation Center for Global Partnership (CGP)



The Japan Foundation Center for Global Partnership (CGP) was established in 1991 with the goal of fostering Japan-U.S. cooperation in tackling global issues. The center promotes dialogue and exchange between all facets of Japanese and U.S. society in order to create a solid partnership based on mutual understanding and joint Japan-U.S. contribution to the global community.

## Mask Up 2020 (U.S.-Japan Face Mask Design Competition 2020)

With the mandatory wearing of face masks in the United States, we held the U.S.-Japan Face Mask Design Competition in order to raise awareness on preventing the spread of infection and wearing face masks where no such habits previously existed. We received a total of 210 submissions on the theme of U.S.-Japan relations from 27 American states (including territories and special districts). Nine winning designs were selected and made into face masks, which were donated to Japan-America Societies and Japanese Gardens.



Wearing the winning design face masks  
(Photo courtesy of Yume Japanese Gardens of Tucson, to which the masks were donated)



Online seminar series

## Online Seminar Series: “Think about America / Think with America”

We held a series of online seminars as an initiative amid the COVID-19 pandemic to think about America, a country that is familiar to everyone, from a new perspective. We delivered five sessions online, focusing on various topics or people related to U.S.-Japan relationship which we selected from the experience of the CGP project over the past 30 years. The archived videos are accessible through the Japan Foundation’s official YouTube channel.

## U.S.-Japan Public Intellectuals Network Program

We dispatched specialists in science and technology to the United States with the aim of promoting a better understanding of Japan in the United States as well as to build networks between Japan, the United States and Israel. In FY2020, we held a roundtable discussion with the program participants, MATSUBARA Mihoko, KAWABATA Yumi, TAKEDA Hideaki and SHIBUSAWA Sakae. Looking back on past projects, they discussed how the cultural elements of each country impact the social reception of science and technology.



Participants of roundtable discussion at the Japan Foundation Headquarters

## Japan Outreach Initiative (JOI) Program

The JOI Program dispatches coordinators who introduce Japanese culture to the U.S. Midwest and South, aiming to deepen interest in and understanding of Japan at the grassroots level. Many activities were held online in FY2020 due to the COVID-19 pandemic, but this also allowed us to discover new ways to hold events. Moreover, we had lively exchanges of opinion at the 17th coordinators’ homecoming report meeting, serving as an opportunity for colleagues who have gone through joys and sorrows together for two years to socialize.



Monthly Origami (paper folding) live event “Hinamatsuri”

## Abe Fellowship Program/Abe Fellows Global Forum/Abe Fellows Colloquium/Abe Fellows Retreat

The Abe Fellowship Program is a research fellowship program operated jointly by the Japan Foundation Center for Global Partnership and the Social Science Research Council (SSRC) of the United States. We have delayed the recruitment of new fellows due to the restrictions on travel between the United States and Japan caused by COVID-19; however, we conducted the Abe Fellows Global Forum, the Abe Fellowship Colloquium and the Abe Fellows’ Retreat online for the sake of sharing research findings and strengthening networks among researchers.



Keynote speakers at the Abe Fellowship Colloquium

# The Japan Foundation Asia Center

Through interacting and collaborating in Japanese-language education, arts and culture, sports, grassroots exchange and intellectual exchange, Asia Center conducts and supports collaborative initiatives with its Asian—primarily ASEAN—counterparts. Asia Center aims to develop the sense of kinship and coexistence as neighboring inhabitants of Asia and nurture human resources to become a bridge between Asian countries.



## Background of the Establishment of Asia Center

Asia Center was established in April 2014 to implement “WA Project: Toward Interactive Asia through Fusion and Harmony,” a new policy for cultural exchange in Asia announced by the Japanese government at the ASEAN-Japan Commemorative Summit Meeting in Tokyo in December 2013.

### Support for Japanese-Language Learning

Students taught (total)	678,650 students
Number of NIHONGO Partners dispatched (total)	2,375 persons

### Arts and Cultural Exchange

Number of events organized/supported	2,504
Participants (total)	5,538,490 participants

\* Accumulative total from FY2014 to FY2020

Left: Online Seminar Series “Asia Center TERAKOYA”  
Center: Online lesson support by person with former NIHONGO Partners  
Right: Streaming “JAPAN-ASEAN JITA-KYOEI PROJECT” seminar

# Support for Japanese-Language Learning

## The NIHONGO Partners Program

The NIHONGO Partners program has previously sent Japanese citizens to educational institutions in Asia to serve as partners for Japanese teachers and their students by supporting Japanese-language classes and introducing Japanese culture; however, due to the COVID-19 pandemic, we were not able to dispatch anyone in FY2020. We have conducted activities to be able to send people again in the future and for the sake of medium- to long-term development, including maintaining and developing network relations that we have built through our work in the past six years as well as keep supporting the work of Japanese-language teachers and learners online.

### “Storytelling 15×15”

In Thailand, we selected 15 of the schools to where we plan to dispatch NIHONGO Partners and held the “Storytelling 15×15” online Japanese contest. In the month or so leading up to the contest, former NIHONGO Partners who had been sent to Thailand instructed the pronunciation, expressions and other learning aspects of participating students online from Japan, contributing to improving the students’ Japanese ability and motivation to learn.



### Support for Online Classes

We held interactive classes online in Thailand, selecting five of the schools where we plan to send NIHONGO Partners and providing online support for two weeks by former NIHONGO Partners in Thailand. Those NIHONGO Partners took part in classes at the school online by following the lead of their counterpart teachers, for example, assisting in the making of teaching materials and checking homework. This project was well received by people appreciating the opportunity to speak to Japanese persons in class.

### Webinar “Why Do Global Human Resources Strengthen Organizations? Think about Post-COVID Learning: Japan Foundation Asia Center×GLOBE+”

As we are undergoing a transition period due to the COVID-19 pandemic, we held a webinar and distributed it online for thinking about the significance of fostering global human resources together with The Asahi Shimbun (GLOBE+ Editorial Department). The guests included two former NIHONGO Partners and two experts. We discussed the importance of having opportunities to come in contact with other cultures and values outside the company or the school as well as the appeal of the NIHONGO Partners Programs.



日本語パートナーズ派遣事業  
オンライン発表会  
国際ビジネス/海外就職

2. 仕事で生きるNP経験

・ NP経験で得たこと

異文化の受容・理解、関係構築の考え方が自然に身についていた

能動的に言うべきことや気持ちを伝える姿勢が大切だと気付いた。

異文化の受容・関係構築の仕方 能動的に伝える姿勢が自然に身につけていました。

### Online Presentation by Former NIHONGO Partners

We held an online meeting for sharing experiences among persons who were sent as NIHONGO Partners between 2014 and 2020. Ahead of the meeting, about 30 former partners were divided into four themes and looked back on their NIHONGO Partners experiences, talked about how to make good use of their experiences in the future and had representatives present and share their ideas. Experts in various fields were also at the meeting to talk about the value of NIHONGO Partners experience and gave advice about how to put it to good use.



# Arts and Cultural Exchange Programs

Asia Center promotes exchange programs among the people of Asia in a wide range of fields such as art, films, performing arts, sports, grassroots exchange and intellectual exchange. We create a new Asian culture together through interaction, collaboration and respect for diversity and people's identity.

## Grant Program for Enhancing People-to-People Exchange (Special Program in response to COVID-19)



Online event "Living Traditional Performing Arts Exchange: Connections between Yogyakarta and Ishigaki-Jima-Island, Islands Where Traditional Arts Are Alive"



"Kawasaki Frontale: Dream Team Selection" (Ho Chi Minh, Vietnam)

Many projects have been cancelled or postponed due to the global COVID-19 pandemic, but we introduced an assistance program for Intercultural Exchange online or in other ways that does not require people to cross national borders, in an effort to preserve our foundation for exchange between people in Japan and Asia.

## Film Culture Exchange Projects with the 33rd Tokyo International Film Festival

The "Asia Lounge" Conversation Series with Asian filmmakers, which we held in collaboration with the Tokyo International Film Festival, has been popular, being viewed by a total of some 10,000 people in more than 40 countries around the world, either live or from the archive. We also screened 20 films, including a Southeast Asian masterpiece that Asia Center has restored to 4K digital quality, and conducted online exchanges with Asian filmmakers.



©2020 TIFF

## The Japanese Film Festival (JFF): Asia-Pacific Gateway Initiative

JFF, which aims to build a comprehensive platform for Japanese films that attracts many visitors, has pursued both real-world and online possibilities to be able to continue delivering Japanese films despite the COVID-19 pandemic. As a result, more than 11,000 visitors attended the film festivals at the cinemas, and the number of views for the online Japanese film festival and other similar events reached over 100,000.



## Judo Exchange Program "JAPAN-ASEAN JITA-KYOEI PROJECT"

We held our first online seminar primarily for young judo instructors in the 10 ASEAN countries with the aim of fostering high-quality instructors and developing the Judo culture in Southeast Asia. A total of 56 instructors studied Judo using various methods over 50 days, including practical instruction by Kodokan teachers, e-learning with video materials and seminars for children.



## Online Seminar Series "Asia Center TERAKOYA"

As it has become difficult to conduct exchanges across national borders due to the global COVID-19 pandemic, we streamed online discussions with guests about themes like sports, movies and intellectual exchange, aiming to rethink the significance of international cultural exchange as well as broadly communicate past achievements and future possibilities of Asia Center projects.



©SAIO Motoi



# Promoting Understanding of and Participation in International Cultural Exchange

The Japan Foundation confers the Japan Foundation Awards and the Japan Foundation Prizes for Global Citizenship to individuals and groups who have contributed to deepening mutual understanding between Japan and the world through international cultural exchange and to groups who engage in outstanding community-based international cultural exchange, respectively.

## The Japan Foundation Awards

### Special Project—International Exchanges Amid the COVID-19 Pandemic as Seen by Past Award Recipients

The Japan Foundation Awards are given to individuals and groups who have made and are expected to further make particularly significant contributions to the promotion of international mutual understanding and friendship through academic, artistic or other cultural activities. In FY2020, the Japan Foundation was inevitably forced to cancel the awards selections and presentations due to the spread of COVID-19. However, as a special project, we shared on our website the messages from 19 past award recipients regarding the state of their activities in 2020, the ideal forms of international cultural exchanges and prospects for the future.



The top page shot from "The Japan Foundation Awards Special Project—International Exchanges Amid the COVID-19 Pandemic as Seen by Past Award Recipients" web page.

## The Japan Foundation Prizes for Global Citizenship

The Japan Foundation Prizes for Global Citizenship are awarded to organizations in Japan that engage in original, forward-thinking initiatives for deepening ties between Japan and other countries, facilitating the exchange of knowledge, ideas and information and encouraging collaborative thinking. In FY2020, three organizations were selected as recipients, and the award ceremony went online for the first time.

### FY2020 Recipients and Reasons for the Prize



#### Takadanobaba SAKURA CLINIC

Takadanobaba SAKURA CLINIC is situated in Takadanobaba, an area with a large number of foreign residents in Tokyo's Shinjuku Ward. The clinic is staffed with professionals with roots in Asian countries and collaborates with the local international community to closely meet patient needs with multilingual services, opening its doors wide for foreign patients to come in and get medical assistance. The clinic also pays special attention in providing preventive health care services for foreign residents and in encouraging capacity building of its staff members. Their constant efforts to provide better medical care to the residents regardless of their origin are a valuable contribution to the realization of sustainable multicultural coexistence.



#### The Volunteers Group to Send Wheelchairs to Overseas Children (Specified Non-Profit Organization)

This group collects and repairs used pediatric wheelchairs in Japan and donates them to developing countries with the aim of helping protect the lives of children with disabilities and promoting their participation in social life. The group's activities have also become in itself a platform for intercultural exchange involving foreign residents living in Japan, who represent roughly half of the volunteers for collecting and repairing wheelchairs. So far the group has donated over 8,500 wheelchairs to 24 countries and has built up a whole process of ensuring effective use of the wheelchairs from the selection of domestic and local collaborating organizations to post-delivery maintenance.



#### The Room for Full of Voice, Words, and Hearts (Cocoroom) (Specified Non-Profit Organization)

The Room for Full of Voice, Words, and Hearts (Cocoroom) has deep roots in the Kamagasaki area of Osaka's Nishinari Ward—one of the working communities that was vital in driving Japan's rapid economic growth in the third quarter of the 20th century. Embracing the theme that "living is expressing," the organization engages in a variety of activities that enable people from diverse backgrounds to encounter others and reengage with society through the power of expression. Running a cafe and a guest house as a steady basis for its many activities, the Room continuously broadens its scope to involve more diverse people by occasionally holding such events as "Kamagasaki University of Arts," reading sessions and "little corner clinic."

### Follow-up Project for the Japan Foundation Prizes for Global Citizenship



#### Online Seminar "Local-Based International Cultural Exchanges in the Age of COVID-19"

On August 6th and 7th, 2020, the Japan Foundation held an online seminar entitled "Local-Based International Cultural Exchanges in the Age of COVID-19" with past award-winning organizations as presenters. The seminar featured the three sessions of "Promoting multicultural coexistence," "International exchange/citizen cooperation" and "Community building through arts." Each session included presentations by participating organizations and lively discussions with moderators. The seminar was live-streamed online, and an archive was uploaded on the Japan Foundation's official YouTube channel.

# 2020 Overseas Office Initiatives

## [Egypt] The Japan Foundation, Cairo JF x Palestine: Online Japanese -Language Course

January 4 to March 20, 2021

In collaboration with the Representative Office of Japan to Palestine, Japanese-language lessons were held online over three months for 93 students living in Palestine.

This was our first Japanese-language education project in Palestine, with newspapers and others taking an interest, as this initiative made the most of online tools by providing the lessons remotely from Cairo to Palestine. The students enthusiastically studied Japanese, with many attending every lesson, so we felt this was a good first step toward continued learner support.



## [Vietnam] The Japan Foundation Center for Cultural Exchange in Vietnam

### Traveling Exhibition of "Japanese Dolls" from the Collection in Vietnam

July 11- August 10, 2020 (Hanoi)  
January 8-27, 2021 (Ho Chi Minh City)

The Japan Foundation Center for Cultural Exchange in Vietnam rearranged the existing collection of Japanese dolls for a set of traveling exhibitions and held it as a "Japanese dolls" exhibition in Hanoi and Ho Chi Minh City in order to provide adequate opportunities to experience Japanese culture in Vietnam even under the situation that the movement of people was restricted considerably due to the COVID-19 pandemic.

A total of some 6,400 people visited the exhibition, with the exquisite beauty and charm of the Japanese dolls enjoying great popularity. The Center plans to expand the exhibition to regional cities where the number of Japanese-language learners is growing, which we hope will stimulate even more interest in Japan.



## [Italy] The Japan Cultural Institute in Rome Yokohama Shashin: Introducing Meiji-Period Sceneries and Customs in Rome

October 15, 2020 to April 23, 2021

A series of 64 "Yokohama Shashin" photos by Adolfo Farsari, an Italian adventurer and photographer working in Japan during the early Meiji period, was exhibited in collaboration with the Italian Cultural Institute of Tokyo. Despite the restrictive capacity of visitors related to the COVID-19 pandemic, the exhibition gained popularity thanks to a self-produced introduction video, as well as two lecture videos, respectively presented by the curator OSANO Shigetoshi (Professor Emeritus, The University of Tokyo) and Rossella Menegazzo (Associate Professor, University of Milan), all of which are available on the YouTube channel of the Japan Cultural Institute in Rome.

<https://www.youtube.com/watch?v=HMFBrbq4AfM>



©Mario Boccia/Istituto Giapponese di Cultura in Roma

## [India] The Japan Foundation, New Delhi Japan-India Contemporary Dance Project -scape

16 March 2021

In collaboration with the Attakkalari Centre for Movement Arts, a work of contemporary dance was created by two choreographers, SUZUKI Ryu from Japan and Hemabharathy Palani from India. The plan was initially to do this in India, but this was not possible due to the COVID-19 pandemic, so we instead used this as an opportunity to make our starting point the question "Can we dance a duet without actually meeting?" This culminated in a performance in front of an audience at a theatre in Bengaluru (India) in March 2021.



Because of the COVID-19 pandemic, cities have been in lockdown and restrictions placed on gatherings and events in many countries, which has also greatly affected the Japan Foundation's overseas offices. Despite restrictions imposed on travel from Japan, various overseas offices have made efforts to introduce Japanese culture and promote cultural exchanges with creative solutions through trial and error. Some of those initiatives are introduced here.

**[Mexico] The Japan Foundation, Mexico  
Online Exhibition Connection Mexico and Japan "Overworld"**

December 11, 2020 to March 31, 2022

A total of 18 artists, architects, designers, illustrators and curators based in Japan and Mexico have been engaged in remote collaboration for more than about four months for an online exhibition which regards the five themes "dwelling, working, eating, moving and gathering" as an "island" with its scenery recreated through various modes of expression. By interactively visiting this space with their fingers, viewers had a new form of urban experience, in which they can freely travel Japanese and Mexican cities as the imagined landscapes by the artists.

<https://www.overworld.mx/>



**[Canada] The Japan Foundation, Toronto  
The 30th Anniversary of the Establishment of the Japan Foundation, Toronto  
Japan-Canada Literary Exchange**

Streaming period: March 30-May 15, 2021

In celebration of three decades in Canada, a special Japan-Canada literary exchange was held, in collaboration with the Japan P.E.N. Club. "The Impact of the Pandemic on Society and Creativity: Perspectives from Writers from Japan and Canada" was coordinated by SATO Ayako (Professor Emerita, Meiji Gakuin University), bringing together iconic Japanese and Canadian writers (ASADA Jiro, KIRINO Natsuo, HIRANO Keiichiro, Margaret Atwood, Katherine Govier, Vincent Lam) who participated in discussions about the changes in society that the COVID-19 pandemic has brought and its impact on future creative works.



**[Thailand] The Japan Foundation, Bangkok  
International Public Symposium "Culture and Diplomacy in the Changing World: Its Relations, Values and Practices"**

December 16, 2020

We held a hybrid symposium that connected the actual venue (Bangkok Art & Culture Centre) and an online platform (YouTube). Ronald Grätz (Secretary General, IFA (Institut für Auslandsbeziehungen), Germany), SHIBASAKI Atsushi (Professor, Komazawa University) and other experts on international relations offered their thoughts about changing cultural and foreign relations, while practitioners of cultural exchange shared their insights from the field. Finally, the experts and practitioners discussed the new possibilities of international cultural exchange in a world that is increasingly divided and post-COVID.

<https://www.jfbkk.or.th/en/publications/reports-catalogues-en/> (Report)

<https://www.youtube.com/watch?v=5UsKXKC7wE> (Video)



**[Brazil] The Japan Foundation, São Paulo  
Music in the Castle (*Música no Castelo*)**

August 15-December 20, 2020

We streamed a 10-part solo concert series entitled *Música no Castelo* by Brazilian and Japanese musicians. The concert title "Castle" means a home. This is because the situation where people stay at home to protect themselves from viruses is similar to the situation where they stay in a castle and protect themselves from enemies. We aimed for each musician to express his or her artistry through the Internet from his or her castle (i.e., home) to the world and to deliver a message of hope and peace. The performance videos were provided on YouTube in four languages: Portuguese, Spanish, English and Japanese.

<https://www.youtube.com/playlist?list=PLIVXpi0uzJFaM-p9y8bgoqnFE4BtHV9LQ>





# Summary of Arts and Cultural Exchange Programs

### 1. Performances

Cancelled due to the impact of the spread of COVID-19

### 2. Japan Festival Support Program

2021 National Cherry Blossom Festival

### 3. Grant Program for Dispatching Artists and Cultural Specialists

Cancelled due to the impact of the spread of COVID-19

### 4. Performing Arts Japan (PAJ)

Cancelled due to the impact of the spread of COVID-19

### 5. International Exhibition Participation

Homecoming exhibition in Japan of the Japan Pavilion at the 58th International Art Exhibition - La Biennale di Venezia  
17th International Architecture Exhibition - La Biennale di Venezia:  
Postponed due to the impact of the spread of COVID-19

### 6. Art Exhibitions

*Relay to Tokyo—Inheriting and Gathering*, an exhibition of contemporary art from Japan (Greece)

### 7. Japan Foundation Traveling Exhibitions

14 sets, traveling 26 cities in 19 countries/regions

### 8. Exhibition Abroad Support Program

8 grants for exhibitions in 8 cities in 8 countries

### 9. U.S. and European Museum Infrastructure Support Program

4 grants provided in 4 cities in 2 countries

### 10. Support Program for Translation and Publication on Japan

35 grants provided for translated publications in 24 countries

### 11. Networking of Cultural Specialists

Cancelled due to the impact of the spread of COVID-19

### 12. Sharing Information

Japanese Literature in Translation Search  
Performing Arts Network Japan (PANJ)  
Japanese Film Database (JFDB)

### 13. New Online Initiatives during the COVID-19 Pandemic

Translators' Roundtable Series *More than Worth Sharing*

Webinar Series - *130 Years of Public Japanese Gardens*

Online distribution of Japanese stage performances *STAGE BEYOND BORDERS - Selection of Japanese Performances -*

Online video distribution series *Beyond the Lines*: Six contemporary artists from Japan

Online Exhibition *11 Stories on Distanced Relationships: Contemporary Art from Japan*

Online video distribution of the travelling exhibitions: *Japanese Yokai*, and *The Superlative Artistry of Japan*

### 14. Japanese Film Screenings

Japanese film festivals and screenings held in 18 countries/regions

Grants for 8 projects held in 7 countries/regions

Online Japanese film festival in China

Online streaming project part 2 "JFF ONLINE x MOOSIC LAB vol.2"

Japanese Film Festival Online 2020-2021

Japanese Film Website JFF+

### 15. Japanese TV Broadcasting Abroad

583 television programs broadcast to 83 countries/regions

### 16. Long-Term Exchange Program for Chinese High School Students

26 students from the 14th session returned to China

15th session students: Program was cancelled due to the impact of the spread of COVID-19

Donated Japanese-language teaching materials and Japan-related books to 38 high schools in China

### 17. Program for Dialogue and Collaboration between Japanese and Chinese High School Students

Online exchange programs between Japanese and Chinese high schools: 8 programs

Online live classes for Chinese high school students: 2 lessons

### 18. Centers for "Face-to-Face Exchanges" in China

Centers for "Face-to-Face Exchanges" organized and held events in 16 cities in China. (A total of 27,111 visitors)

Seminars introducing Japanese culture (online): 3 seminars

Training for staff in charge of practical business at Centers for "Face-to-Face Exchanges" (online)

### 19. Network Strengthening Programs

University Student Exchange Program (online): 12 programs

"RELEAD ASIA 2020" (online)

Training for representative students from Centers for "Face-to-Face Exchanges" (online)

Operation of website "Heart to Heart" (Japanese and Chinese)

# Summary of Japanese-Language Education Overseas Programs

## 1. Promoting the JF Standard for Japanese-Language Education

JF Standard for Japanese-Language Education website accessed approximately 268,000 times in 12 months

'Minna no Can-do' website accessed approximately 340,000 times in 12 months

Marugoto: Japanese Language and Culture published overseas edition in 6 levels in 5 countries

Irodori: Japanese for Life in Japan enhanced contents of teaching materials including Starter

Supervised NHK World Japan's Easy Japanese

Providing information at various online seminars and training sessions in Japan and overseas

## 2. JF Language Course

Language courses held in 27 cities in 26 countries/regions

## 3. Online Educational Tools

(1) Approximately 225,000 registered users for JF Japanese e-Learning Minato

(2) 'Minna no Kyozaï' website accessed approximately 1.81 million times in 12 months

(3) MARUGOTO website accessed approximately 6.11 million times in 12 months

(4) MARUGOTO Plus websites accessed approximately 9.75 million times in 12 months

(5) Irodori: Japanese for Life in Japan website accessed approximately 2.52 million times in 12 months

(6) Hirogaru, get more of Japan and Japanese website accessed approximately 780,000 times in 12 months

(7) Japanese in Anime & Manga website accessed approximately 1.15 million times in 12 months

(8) NIHONGO e-za website accessed approximately 1.37 million times in 12 months

(9) The Nihongo de Care-Navi website accessed approximately 900,000 times in 12 months

(10) The online version of "Erin's Challenge! I Can Speak Japanese." / "Erin's Challenge! I Can Speak Japanese." Contents Library accessed approximately 3.24 million times in 12 months

(11) Challenge with Erin - Japanese Language Test - (beginner-level learning app) downloaded approximately 18,000 times in 12 months

(12) The HIRAGANA Memory Hint (character learning app) downloaded approximately 90,000 times in 12 months

(13) The KATAKANA Memory Hint (character learning app) downloaded approximately 50,000 times in 12 months

(14) The KANJI Memory Hint 1, 2 & 3 (character learning app) downloaded approximately 80,000 times in 12 months

## 4. Tests for Assessing Japanese-Language Proficiency

(1) Japanese-Language Proficiency Test (JLPT)

1st Test (July 5, 2020): Cancelled due to the impact of the world-wide spread of COVID-19

2nd Test (December 6, 2020)

Overseas: Held in 90 cities in 28 countries/regions, with 212,614 applicants (181,528 examinees).

Japan\*: Held in 47 prefectures, with 211,533 applicants (188,500 examinees).

Accumulative total of overseas applicants 11,053,360 (9,291,706 examinees)

Accumulative total of applicants in Japan 3,768,590 (3,432,732 examinees)

\*In Japan, the test is run by Japan Educational Exchanges and Services (JES).

(2) The Japan Foundation Test for Basic Japanese (JFT-Basic)

6 times a year, 13 cities in 7 overseas countries, and 47 prefectures in Japan with 18,660 applicants (17,582 examinees)

## 5. Surveys and Provision of Information Relating to Japanese-Language Projects

The Japan Foundation Japanese-Language Education Bulletin issued annually

Nihongo Kyoiku Tsushin (updated monthly) accessed approximately 510,000 times in 12 months

Operation of website Nihongo Kyōiku Kuni-Chiikibetsu Jōhō (Information on Japanese-language education by country/region; available in Japanese)

Survey Report on Japanese-Language Education Abroad 2018 released

## 6. Japanese-Language Education Overseas Programs of Overseas Offices and the JF Nihongo Network ("Sakura Network")

Projects by Japan Foundation's overseas offices and Japan Center for Human Resources Development (Japan Center) branches: 260 projects in 27 countries

JF Nihongo Network ("Sakura Network"): 292 member organizations in 93 countries/regions

Support for overseas Japanese-language education institutions (grants): 514 grants in 85 countries/regions

## 7. Dispatch of Japanese-Language Specialists

Dispatching of Japanese-Language Specialists and other personnel

Japanese-Language Senior Specialists: 29 posts in 22 countries

Japanese-Language Specialists: 80 posts in 39 countries

Japanese-Language Assistants: 12 posts in 11 countries

Japanese Language Education Assistant Program (J-LEAP): 5 posts in 1 country

## 8. Training Programs for Overseas Teachers

Training Programs for Teachers of the Japanese Language

Basic (online): 33 people in 26 countries

( Basic (Autumn): 31 people in 25 countries )  
( Basic (Winter): 22 people in 21 countries )

Teaching Methods (online): 50 people in 28 countries and 1 region

( Teaching Methods (Summer): 27 people in 20 countries and 1 region )  
( Teaching Methods (Winter): 23 people in 17 countries )

Intensive Training Programs for Secondary School Teachers of the Japanese Language

from the People's Republic of China (online): 8 people in 1 country

Specific Theme (online): 16 people from 11 countries/regions

( Specific Theme (Business Japanese): 5 people from 5 countries )  
( Specific Theme (Teaching Japanese Grammar): 11 people from 10 countries )

Japanese-Language (online): 15 people from 10 countries

Japanese Teaching Methods Program for Teachers of Specified Skilled Workers Candidates

(online): 37 people from 5 countries

( Session 1: 14 people from 4 countries )  
( Session 2: 12 people from 5 countries )  
( Session 3: 11 people from 5 countries )

The Online Guest Teacher Program for teachers from Queensland, Australia (online):

18 people from 1 country

Lesson experience seminar (online): 223 people from 35 countries

Introductory seminar on video production for Japanese-language teachers (online):

208 people from 30 countries

Introductory seminar on video production for Japanese-language teachers (Basic

(online): 231 people from 29 countries

## 9. Training Programs for Overseas Learners

Japanese-Language Program for Specialists

In FY2019 (continued from FY2019 to FY2020)

Foreign service officers: 29 people from 29 countries

Public officials: 2 people from 2 countries

In FY2020

Foreign service officers and public officials (online): 28 people from 28 countries

Specialists in Cultural and Academic Fields / 2-month course (online): 16 people from 10 countries

Japanese-Language Programs for Overseas Students

Lee Soo-Hyun Youth Exchange Program (online): 19 people from 1 country

## 10. Japanese-Language Education Training Program for Candidates for Nurses and Certificated Care Workers Related EPAs

6-month Preparatory Japanese-Language Training Programs for Prospective Nurses and Certificated Care Workers implemented in Indonesia and the Philippines

4 EPA-related training programs implemented in 2 countries (2 online trainings)

FY2019 (continued from FY2019 to FY2020): 322 from Indonesia / 340 from the Philippines

FY2020 (new) (online): 274 from Indonesia / 227 from the Philippines

## 11. Commissioned Training Programs

Training for Teachers

Cancelled due to the impact of the spread of COVID-19

Training for Learners

Japanese-Language Program for Indonesian University Students (Commissioned by Osaka Gas Foundation of International Cultural Exchange): 2 university students from 1 country

## 12. Other Training Programs

Cancelled due to the impact of the spread of COVID-19

## 13. Libraries of Japanese-Language Institutes

The Library of the Japanese-Language Institute, Urawa received 1,755 visitors (reserved books rental service was available during the temporary closure)

The Library of the Japanese-Language Institute, Kansai received 4,097 visitors

# Summary of Japanese Studies and Intellectual Exchange Programs

## 1. Support for Japanese Studies Organizations

### (1) Support Program for Development of Infrastructure for Japanese Studies

#### Asia

Korea: Hallym University; Korea University; Institute for Japanese Studies, Seoul National University; Department of Asian Languages and Civilizations, Seoul National University

China: Zhejiang Gongshang University; Nankai University; Fudan University

Indonesia: University of Indonesia

Vietnam: University of Social Sciences and Humanities, VNU-Hanoi

India: School of International Studies, Jawaharlal Nehru University; School of Language, Literature and Culture Studies, Jawaharlal Nehru University

Bangladesh: University of Dhaka

#### Americas

U.S.: The University of Arizona; Arizona State University; University of California, Irvine; University of California, Santa Barbara; Case Western Reserve University; Purdue University; The University of Utah

#### Europe

U.K.: University of East Anglia

Uzbekistan: Tashkent State Institute of Oriental Studies

Russia: Saint Petersburg State University, Far Eastern Federal University

#### Middle East and Africa

Israel: Hebrew University of Jerusalem

Egypt: Cairo University

### (2) Japanese studies project grants

17 projects in 13 countries/regions

## 2. The Beijing Center for Japanese Studies

### (1) Invitation programs (online)

Beijing Foreign Studies University

8 Masters students of the 34th session invited to online programs to engage in Japanese studies

2 PhD fellows of the 19th session

Peking University

20 PhD students of the 15th session invited to special online program to understand actual Japanese society

### (2) Dispatch programs (online)

6 people to Beijing Foreign Studies University

7 people to Peking University

### (3) Other programs

Beijing Foreign Studies University

2 online workshops for master's and PhD programs

Peking University

The 30th Anniversary Meeting of the Center for Contemporary Japanese Studies, Peking University

## 3. Japanese Studies Fellowship

61 fellows (including those who continued their stay from the previous year)

Video series

*Alone Together - Reimagining International Exchange in Post-COVID*

*Japan*: 6 videos

*Alone Together - Special Edition: Messages from Around the World*:

3 videos

## 4. Enhancement of Japanese Studies Network

### (1) Hosted/Co-hosted programs

The Collaborative Research Workshop for Aspiring Scholars in Japanese Studies: Online Follow-up

### (2) Grant programs: 16 projects in 13 countries

## 5. Enhancement of Intellectual Exchanges

### (1) Hosted/Co-hosted events

Japan-China Intellectual Exchange Program:

4 contributions to the Japan Foundation Web Magazine "Wochi Kochi" by past participants / 1 online dialogue

Japan-Germany Symposium "Crisis Communication: Japanese and German Perspectives — Commemorating Ten Years after the Great East-Japan Earthquake"

### (2) Grants programs for Intellectual Exchange Conferences: 15 projects

## 6. Grant Program for Social Science, Research and Education on Contemporary Japan

### Asia and Oceania

Australian National University

### Americas

Yale University

Johns Hopkins University

Harvard University

Indiana University

### Europe

King's College London

Vrije Universiteit Brussel

European University Institute

## 7. Intellectual and Grassroots Exchanges with the United States

### (1) Hosted programs

Mask Up 2020 (The U.S.-Japan Face Mask Design Contest): 210 entries and 9 selected

Abe Fellowship: "Global Forum"/"Colloquium" and "Retreat" 1 time each  
U.S.-Japan Public Intellectuals Network Program: Held a roundtable discussion and published a report

Japan Outreach Initiative (JOI) Program: 10 JOI coordinators (0 new and 10 continuing)

Grassroots Exchange Network - Japan (GEN-J) Program: 6 people (0 new and 6 continuing)

### (2) Grant programs

Special Initiatives: 5 (3 new and 2 continuing)

Regular Grants: 18 (13 new and 5 continuing)

CGP New York (CGPNY)

Urgent support for U.S.-Japan related organizations in response to the COVID-19: 32 applications and 31 accepted

Support for Grassroots outreach personnel: 23 applications and 11 accepted

CGPNY discretionary grants: 8 (2 grassroots exchange, 3 intellectual exchange, 3 education)



# Summary of the Japan Foundation Asia Center Programs

### 1. NIHONGO Partners Programs

NIHONGO Partners Program in FY2020:

Cancelled due to the impact of the spread of COVID-19

The Nikkei online edition seminar "International Exchange Connecting to the Future: Asian Bonds Spun by NIHONGO Partners"

Webinar "Why Do Global Human Resources Strengthen Organizations? Think about Post-COVID Learning"

Online presentation by experienced NIHONGO Partners

"Scenes from Daily Life in 2020 Japan: Short Videos created by NIHONGO Partners"

"Storytelling 15×15" (Thailand)

Support for online classes (Thailand)

Project introduction at the Indonesia Japan Online Festival 2020 (Indonesia)

NP Online Chat in Japanese (Indonesia)

Japanese-language volunteer project by Japanese residents in Laos

### 2. Grassroots Exchange Programs

HANDS! -Hope and Dreams Project- (published a report)

Grant Programs: 18 grants

### 3. Asian Leadership Exchanges

Asia Leadership Fellow Program (ALFP) (published a report)

### 4. Cultural Collaboration Programs

Film Culture Exchange Projects with the 33rd Tokyo International Film Festival ("Asia Lounge" Conversation Series, etc.)

Asian Film Restoration Project *Mukhsin* [4K Digitally Restored Version]

Omnibus Film Production Series "Asian Three-Fold Mirror 2016:

Reflections" and "Asian Three-Fold Mirror 2018: Journey" (distributed online)

Media Art Exchange Initiative (published a report)

Learning Platform Art + Asia "Jalan-jalan di Asia: Walking Dictionary" \*

Nikkei Virtual Global Forum "Thinking about culture, art and

entertainment in the COVID-19 era—With In-Person Exchanges Difficult, Now Is the Time to Bond Across Borders"

Online Seminar Series "Asia Center TERA KOYA"

"Asia Center TERA KOYA" #1 - Connecting Across Borders in the COVID-19 Era "To Explore New Forms of International Cultural Exchange"

"Asia Center TERA KOYA" #2 - What Football Can Do Now: Activities by J. LEAGUE Clubs in Southeast Asia

"Asia Center TERA KOYA" #3 - Filmmaking in the Time of COVID-19: Case studies from Japan, Indonesia and China

"Asia Center TERA KOYA" #4 - The Future of Football in Asia and Japan: Long-term Dispatch Projects of Football Coaches and Staff

"Asia Center TERA KOYA" #5 - "Intellectual Exchange in Asia: The 30 Years of History since the End of the Cold War, and the Future"

"Asia Center TERA KOYA" #6 - "Democracy at a Crossroads: Choices for the New Era of Questions Posed by the Coronavirus Crisis"

JFA Collaborative Football Project

Dispatch of Long-term Coaches: Cambodia, Philippines, Brunei, Vietnam

Judo Exchange Program "JAPAN-ASEAN JITA-KYOEI PROJECT"

Kodokan International Training Seminar (online)

Online Conference with Presidents of Judo Federations in ASEAN countries

Creating teaching materials

DocCross Asia

Social Innovation Link (SOIL) program

Grant programs: 34 grants\*

\*Includes projects conducted as part of the "Project for the Dispatch of Supporters who introduce Japanese language and cultures," which was funded by the FY2019 supplementary budget (No. 1).

# Financial Cooperation from the Private Sector

The Japan Foundation's international cultural exchange programs are made possible thanks to generous financial contributions from a wide range of private-sector entities, including companies, organizations and individuals.

The donation system and other aspects of private funding for FY2020 are explained below, along with a list of donors and programs supported with their funding.

## 1. Types of Financial Cooperation

### (1) General Donations

General donations are used to fund the Japan Foundation's international cultural exchange programs.

#### i. General Donations System

General donations are received from companies, organizations and individuals. The amount and timing of the donation are up to the donor. Donors in FY2020 are listed on the following page under Donors for Program Expenses and Private Endowment Providers.

- Donations for program expenses

These donations fund the Japan Foundation's programs conducted in the same fiscal year as the donation. The donor can request the donation to be used for a specific project during the fiscal year.

- Donations for operational funds (private endowments)

These donations are deposited to the Japan Foundation's funds, and the accrued interest is used for program expenses in perpetuity. The FY2020 implementation of special programs established and named at the request of the benefactors in the past is outlined on the next page under Programs Supported by Private Endowments.

#### ii. Corporate Membership System (Supporting members)

Fixed donations are received from companies and organizations as annual membership dues. They are used to fund programs conducted in the same fiscal year. Donations are made in units of 100,000 JPY. General Members donate 100,000 JPY to 400,000 JPY, and Special Members donate 500,000 JPY or more annually. Membership benefits include invitations to various events of the Japan Foundation and a copy of The Japan Foundation Annual Report. Corporate members for FY2020 are listed on the next page under Corporate Members.

### (2) Designated Donations

Financial contributions from individuals and corporations in Japan to support international cultural exchange programs in Japan and overseas are received by the Japan Foundation as donations to be used as a subsidy for applicable cultural exchange projects. This system makes donors eligible for tax benefits for their donations.

Applicable programs are international cultural exchange activities such as personnel exchanges, overseas Japanese studies and Japanese-language education programs, performances, exhibitions and seminars. Designated donations are reviewed by a screening committee of outside experts to decide whether to accept the donation. Programs funded by designated donations in FY2020 are listed on the next page under Programs Supported by Designated Donations.

### (3) Other Types of Private Financial Support

Besides donations, the Japan Foundation receives private-sector financial support in various forms such as cooperation funds and grants. Examples of such support in FY2020 are listed on the next page under Primary Examples of Non-Donation Financial Support.

## 2. Tax Benefits for Donations

The Japan Foundation is a "Designated Public Benefit Organization" in accordance with Article 77 of the Order for Enforcement of the Corporation Tax Act and Article 217 of the Order for Enforcement of the Income Tax Act. This makes Japan-based donations to the Japan Foundation eligible for the following tax benefits.

### (1) For Corporations

The total donation amount to Designated Public Benefit Organization or the maximum deductible donation amount to Designated Public Benefit Organization, whichever is smaller, is treated as a loss.

NB 1: If the total donation amount to Designated Public Benefit Organization is larger, the amount not treated as a loss (the amount exceeding the maximum deductible amount of donation to Designated Public Benefit Organizations) is included in the amount of normal donations. The maximum deductible amount of a donation is calculated as follows:

- Donations to Designated Public Benefit Organizations (Maximum Deductible Donation Amount)

(Amount of capital x Number of months for the period/12 x 0.375% + Amount of income x 6.25%) x 1/2

- Normal donations

(Amount of capital x Number of months for the period/12 x 0.25% + Amount of income x 2.5%) x 1/4

### (2) For Individuals

The total donation amount minus 2,000 JPY (up to 40% of the gross income) is tax deductible. Donations of inherited assets are also eligible for beneficial taxation treatment.

## 3. Donations Received in FY2020

	Number	Amount (JPY)
General donations	38	39,708,000
Supporting members	31	6,650,000
Donations for programs	7	33,058,000
Private endowments	1	1,000
Designated donations	11	710,127,048 (NB 2)

NB 2: From the designated donations received, 733,859,212 JPY plus the 42,289,696 JPY carried over from FY2019 were given as subsidies to nine programs (see Programs Supported by Designated Donations on the next page). The remaining 18,557,532 JPY of the designated donations will be provided as subsidies to eight programs in FY2021.

NB 3: From the establishment of the Japan Foundation in 1972 to the end of FY2020, the cumulative amount of general donations it has received was approximately 3,087,730,000 JPY and the cumulative amount of designated donations received was approximately 71,667,920,000 JPY.

NB 4: A total of approximately 26,000,000 JPY of non-donations was received from the private sector in FY2020 as financial cooperation (cooperation funds, grants, etc.)

## List of Donors, Contributors and Supported Programs in FY2020

### Donors for Program Expenses

(Listed in random order and without honorifics. Programs applicable for contributions in parentheses)

Japan Tobacco Inc. (support for Japanese-language and Japanese Studies education at Russian universities)

ODAKA Masamitsu and five individuals (General program expenses)

### Private Endowment Providers

One individual

### Programs Supported by Private Endowments

(Listed in random order and without honorifics)

(Special programs established and named at the request of the benefactor)

Takasago Thermal Engineering Japanese Studies Fellowship

The benefactor is Takasago Thermal Engineering Co., Ltd.

WATANABE Ken Japanese Studies Fellowship

The benefactor is WATANABE Yukinobu, the father of Foreign Ministry worker WATANABE Ken who died in a traffic accident while training in the U.S.

### Corporate Members (As of end FY2020, in alphabetical order)

#### (1) Special Members

Mizuho Bank, Ltd.; MUFG Bank, Ltd.; Shochiku Co., Ltd.; SMBC Nikko Securities Inc.

#### (2) General Members

All Japan Kendo Federation; Asuka Foundation; Bonjinsha Inc.; Daiichi Seiwa Jimusho Co., Ltd.; Daiwa Securities Co. Ltd.; FUJIFILM Business Innovation Corp.; Hitachi, Ltd.; Idemitsu Kosan Co., Ltd.; Ikenobo; Japan International Cooperation Center; Katolec Corp.; Kodansha Ltd.; Kodokan Judo Institute; Kokusai Service Agency; Komazawa University; Mitsubishi UFJ Morgan Stanley Securities Co., Ltd.; Mori Building Co., Ltd.; Motion Picture Producers Association of Japan, Inc.; NHK International, Inc.; Nippon Origami Association; Nomura Securities Co., Ltd.; Shiseido Co., Ltd.; Shorinji Kempo Organization; Sumitomo Mitsui Banking Corp.; Tokyo Business Service Co., Ltd; Urasenke Konnichian Foundation; and one other corporate member

### Programs Supported by Designated Donations

(Country of program implementation in parentheses. Listed in random order)

Asian University for Women Scholarship Program (Bangladesh); CWAJ Cultural Exchange Scholarship Program for Women (Japan and U.S.); Indiana University Japan Scholarship (U.S.); Mikasanomiya Foundation Fundraising Activities (Turkey); LSH Asia Scholarship (Japan); Balkan Chamber Orchestra 2020 (Japan); Music from Japan 46th Anniversary Festival Artist Residence (U.S.); The TOYAMA World Festival of Children's Theater in 2020- The 4th World Festival of Children's Performing Arts in Toyama (Japan); International Law Association 79th Biennial Conference (Japan)

### Primary Examples of Non-Donation Financial Support

(Listed in random order and without honorifics)

Ishibashi Foundation

Support for the Ishibashi Foundation and The Japan Foundation Art Curator Exchange Program, Ishibashi Foundation/The Japan Foundation Fellowship for Research on Japanese Art

Stroog Inc.

Sponsorship for the Japan Pavilion at the 17th International Architecture Exhibition, *La Biennale di Venezia* in 2021

JINS HOLDINGS Inc.

Sponsorship for the Japan Pavilion at the 17th International Architecture Exhibition, *La Biennale di Venezia* in 2021

Suikoukai Medical Corporation, Japan

Sponsorship for the Japan Pavilion at the 17th International Architecture Exhibition, *La Biennale di Venezia* in 2021

KAMAWANU CO., LTD.

Sponsorship for the Japan Pavilion at the 17th International Architecture Exhibition, *La Biennale di Venezia* in 2021

Shoyu Club

Provision of Japanese-language educational materials and equipment to Hue University College of Foreign Languages, The University of Danang - University of Foreign Language Studies, Ha Long University and Lac Hong University

Inoue Yasushi memorial cultural foundation

Co-sponsorship for the Support Program for Translation and Publication of INOUE Yasushi's works and the Inoue Yasushi Award



# Financial Statements

## Financial Results for FY2020 (April 1, 2020 – March 31, 2021)

(Unit: JPY)

Item	Arts and Cultural Exchange programs				Japanese-Language Education programs				Japanese Studies and Intellectual Exchange programs			
	Budget	Result	Difference	Notes	Budget	Result	Difference	Notes	Budget	Result	Difference	Notes
<b>▼ Revenues</b>												
Government subsidies for operational expenses	1,604,482,000	1,604,482,000	0		3,976,411,000	3,976,411,000	0		1,228,623,000	1,228,623,000	0	
Investment revenue	131,559,000	120,805,285	(10,753,715)		0	3,186,061	3,186,061		659,995,000	595,791,896	(64,203,104)	
Donation revenue	33,788,000	20,227,001	(13,560,999)		3,607,000	1,828,767	(1,778,233)		24,246,000	13,265,954	(10,980,046)	
Income from commissioned projects	0	0	0		20,900,000	6,256,864	(14,643,136)		0	0	0	
Income from reversal of Asia Center programs fund	0	0	0		0	0	0		0	0	0	
Other revenue	65,953,000	39,127,223	(26,825,777)		1,783,960,000	872,448,907	(911,511,093)	*1	41,600,000	45,116,201	3,516,201	
Income from reversal of reserve carried over from previous mid-term target period	104,000,000	13,398,759	(90,601,241)		0	0	0		0	0	0	
<b>Total</b>	<b>1,939,782,000</b>	<b>1,798,040,268</b>	<b>(141,741,732)</b>		<b>5,784,878,000</b>	<b>4,860,131,599</b>	<b>(924,746,401)</b>		<b>1,954,464,000</b>	<b>1,882,797,051</b>	<b>(71,666,949)</b>	
<b>▼ Expenditures</b>												
Operating expenses	1,965,074,000	2,288,477,425	(323,403,425)	*2	5,620,806,000	5,322,215,463	298,590,537	*1	1,951,999,000	1,221,279,593	730,719,407	*3
General and administrative expenses	0	0	0		0	0	0		0	0	0	
Salaries and wages	0	0	0		0	0	0		0	0	0	
Supplies	0	0	0		0	0	0		0	0	0	
Reserve funds	0	0	0		0	0	0		0	0	0	
<b>Total</b>	<b>1,965,074,000</b>	<b>2,288,477,425</b>	<b>(323,403,425)</b>		<b>5,620,806,000</b>	<b>5,322,215,463</b>	<b>298,590,537</b>		<b>1,951,999,000</b>	<b>1,221,279,593</b>	<b>730,719,407</b>	

Item	Survey, research and information service programs				Asia Center programs				Overseas programs			
	Budget	Result	Difference	Notes	Budget	Result	Difference	Notes	Budget	Result	Difference	Notes
<b>▼ Revenues</b>												
Government subsidies for operational expenses	533,315,000	533,315,000	0		0	0	0		3,571,115,000	3,571,115,000	0	
Investment revenue	0	326,445	326,445		0	0	0		0	49,711,938	49,711,938	
Donation revenue	917,000	187,376	(729,624)		0	0	0		3,575,000	691,748	(2,883,252)	
Income from commissioned projects	0	0	0		0	0	0		0	0	0	
Income from reversal of Asia Center programs fund	0	0	0		1,990,790,000	623,784,308	(1,367,005,692)	*3	0	0	0	
Other revenue	510,000	1,520	(508,480)		0	0	0		74,357,000	51,639,213	(22,717,787)	
Income from reversal of reserve carried over from previous mid-term target period	0	0	0		0	0	0		0	0	0	
<b>Total</b>	<b>534,742,000</b>	<b>533,830,341</b>	<b>(911,659)</b>		<b>1,990,790,000</b>	<b>623,784,308</b>	<b>(1,367,005,692)</b>		<b>3,649,047,000</b>	<b>3,673,157,899</b>	<b>24,110,899</b>	
<b>▼ Expenditures</b>												
Operating expenses	578,507,000	458,233,882	120,273,118	*3	1,990,790,000	623,784,308	1,367,005,692	*3	3,896,207,000	3,347,005,011	549,201,989	*3
General and administrative expenses	0	0	0		0	0	0		0	0	0	
Salaries and wages	0	0	0		0	0	0		0	0	0	
Supplies	0	0	0		0	0	0		0	0	0	
Reserve funds	0	0	0		0	0	0		0	0	0	
<b>Total</b>	<b>578,507,000</b>	<b>458,233,882</b>	<b>120,273,118</b>		<b>1,990,790,000</b>	<b>623,784,308</b>	<b>1,367,005,692</b>		<b>3,896,207,000</b>	<b>3,347,005,011</b>	<b>549,201,989</b>	

Item	Cooperation in cultural exchange facilities programs				Common expenses				Total			
	Budget	Result	Difference	Notes	Budget	Result	Difference	Notes	Budget	Result	Difference	Notes
<b>▼ Revenues</b>												
Government subsidies for operational expenses	0	0	0		1,758,246,000	1,758,246,000	0		12,672,192,000	12,672,192,000	0	
Investment revenue	0	229,331	229,331		9,746,000	14,790,399	5,044,399		801,300,000	784,841,355	(16,458,645)	
Donation revenue	295,272,000	710,258,682	414,986,682	*4	840,000	3,383,520	2,543,520		362,245,000	749,843,048	387,598,048	
Income from commissioned projects	0	0	0		0	0	0		20,900,000	6,256,864	(14,643,136)	
Income from reversal of Asia Center programs fund	0	0	0		0	0	0		1,990,790,000	623,784,308	(1,367,005,692)	
Other revenue	0	0	0		3,371,000	4,110,390	739,390		1,969,751,000	1,012,443,454	(957,307,546)	
Income from reversal of reserve carried over from previous mid-term target period	0	0	0		0	0	0		104,000,000	13,398,759	(90,601,241)	
<b>Total</b>	<b>295,272,000</b>	<b>710,488,013</b>	<b>415,216,013</b>		<b>1,772,203,000</b>	<b>1,780,530,309</b>	<b>8,327,309</b>		<b>17,921,178,000</b>	<b>15,862,759,788</b>	<b>(2,058,418,212)</b>	
<b>▼ Expenditures</b>												
Operating expenses	304,511,000	743,345,907	(438,834,907)	*4	0	0	0		16,307,894,000	14,004,341,589	2,303,552,411	
General and administrative expenses	0	0	0		2,437,759,000	2,327,122,964	110,636,036		2,437,759,000	2,327,122,964	110,636,036	
Salaries and wages	0	0	0		555,214,000	573,939,287	(18,725,287)		555,214,000	573,939,287	(18,725,287)	
Supplies	0	0	0		1,536,013,000	1,753,183,677	(217,170,677)	*5	1,536,013,000	1,753,183,677	(217,170,677)	
Reserve funds	0	0	0		346,532,000	0	346,532,000		346,532,000	0	346,532,000	
<b>Total</b>	<b>304,511,000</b>	<b>743,345,907</b>	<b>(438,834,907)</b>		<b>2,437,759,000</b>	<b>2,327,122,964</b>	<b>110,636,036</b>		<b>18,745,653,000</b>	<b>16,331,464,553</b>	<b>2,414,188,447</b>	

\*1. Decrease in income and expenditures due to cancellation of the Japanese-Language Proficiency Test, and other factors

\*2. Due to the expenditure of carrying forward the budget from FY2019 which is outside the budget for income, and other factors

\*3. Decrease in expenditures due to cancellation and downsizing of some projects, and other factors

\*4. Due to increase in designated donations received and compensated expenditures, and other factors

\*5. Increase in expenditures for system common infrastructure development expenses and OA system repair and operation expenses, and other factors

**Balance Sheet** (as of March 31, 2021)

(Unit: JPY)

<b>Assets</b>			
<b>I Current assets</b>			
Cash and deposits		14,619,315,828	
Marketable securities		7,299,800,163	
Advance payments		43,120,760	
Prepaid expenses		137,390,029	
Accrued income		137,299,820	
Accounts receivable		433,596,026	
Contra accounts for allowance for bonuses <sup>(Note)</sup>		280,712,018	
Other current assets		39,281,768	
Total current assets			22,990,516,412
<b>II Fixed assets</b>			
<b>1 Tangible fixed assets</b>			
Buildings	13,732,692,714		
Accumulated depreciation	(6,806,733,958)	6,925,958,756	
Structures	315,440,940		
Accumulated depreciation	(303,153,602)	12,287,338	
Machinery and equipment	57,719,952		
Accumulated depreciation	(29,069,062)	28,650,890	
Vehicles and transport equipment	119,414,843		
Accumulated depreciation	(77,546,283)	41,868,560	
Tools, equipment and fixtures	1,540,203,618		
Accumulated depreciation	(1,126,923,727)	413,279,891	
Art objects	563,279,588		
Accumulated depreciation	(32,877,151)	530,402,437	
Land		63,515,000	
Construction in progress		4,641,298	
Total tangible fixed assets			8,020,604,170
<b>2 Intangible fixed assets</b>			
Software		300,069,559	
Telephone subscription rights		428,000	
Software in progress		79,499,612	
Total intangible fixed assets			379,997,171
<b>3 Investments and other assets</b>			
Investment securities		51,690,844,112	
Long-term time deposits		1,700,000,000	
Deposits and bonds		386,359,179	
Contra accounts for allowance for retirement benefits <sup>(Note)</sup>		2,590,486,793	
Total investments and other assets			56,367,690,084
Total fixed assets			64,768,291,425
<b>Total assets</b>			<b>87,758,807,837</b>
<b>Liabilities</b>			
<b>I Current liabilities</b>			
Operational grant liabilities <sup>(Note)</sup>		6,854,939,812	
Deposits subsidies and others <sup>(Note)</sup>		1,796,295,133	
Donations received <sup>(Note)</sup>		67,361,283	
Amount in arrears		1,096,287,033	
Advances received		25,585,343	
Deposits payable		9,419,946	
Deferred revenue		12,071,824	
Lease liabilities		3,417,836	
Allowance			
Allowance for bonuses	323,009,811	323,009,811	
Total current liabilities			10,188,388,021
<b>II Fixed liabilities</b>			
<b>Contra accounts for assets <sup>(Note)</sup></b>			
Contra accounts for assets funded by operational grants	1,338,513,869		
Contra accounts for assets funded by donations	1,606,345		
Contra accounts for assets for construction in progress funded by operational grants	4,641,298		
Contra accounts for assets for software in progress funded by operational grants	68,560,112	1,413,321,624	
Long-term lease liabilities		11,112,245	
Allowance			
Allowance for retirement benefits	2,590,486,793	2,590,486,793	
Asset retirement obligations		93,254,292	
Total fixed liabilities			4,108,174,954
<b>Total liabilities</b>			<b>14,296,562,975</b>
<b>Net assets</b>			
<b>I Capital stock</b>			
Government investment		77,729,095,177	
Total capital stock			77,729,095,177
<b>II Capital surplus</b>			
Capital surplus		536,325,674	
Accumulated other administrative costs <sup>(Note)</sup>		(7,510,278,184)	
Accumulated depreciation (loss)		(6,575,548,602)	
Accumulated impairment losses (loss)		(126,000)	
Accumulated interest expenses (loss)		(6,026,779)	
Accumulated gains (losses) from sale and disposal (loss)		(928,576,803)	
Endowments from private sector		908,027,787	
Total capital surplus			(6,065,924,723)
<b>III Retained earnings</b>			
Reserve		1,529,329,074	
Reserve carried over from previous mid-term target period <sup>(Note)</sup>		119,231,925	
Unappropriated profit for the term		147,635,769	
(Of which: Gross profit for the term)		147,635,769	
Total retained earnings			1,796,196,768
<b>IV Valuation and translation adjustments</b>			
Deferred gains or losses on hedges		2,877,640	
Total valuation and translation adjustments			2,877,640
Total net assets			73,462,244,862
<b>Total liabilities and net assets</b>			<b>87,758,807,837</b>

(Note) These are the accounts associated with the accounting procedures specific to Incorporated Administrative Agency.

## Profit and Loss Statement (April 1, 2020 – March 31, 2021)

(Unit: JPY)

Ordinary expenses		
Arts and Cultural Exchange programs		2,282,799,664
Japanese-Language Education programs		5,319,440,201
Japanese Studies and Intellectual Exchange programs		1,220,577,738
Survey, research and information service programs		489,050,623
Asia Center programs		627,307,553
Overseas programs		3,368,766,861
Cooperation in cultural exchange facilities programs		743,345,907
General and administrative expenses		2,028,257,559
Financial expenses		433,512
Total ordinary expenses		16,079,979,618
Ordinary income		
Income from operational grants (Note)		12,333,984,939
Income from investments		783,487,834
Income from commissioned projects		5,885,788
Income from subsidies (Note)		624,258,315
Income from donations (Note)		
Income from donations	44,554,840	
Income from designated donations	733,859,212	778,414,052
Reversal of contra accounts (Note)		
Reversal of contra accounts for assets funded by operational grants	326,320,508	
Reversal of contra accounts for assets funded by subsidies	3,049,238	
Reversal of contra accounts for assets funded by donations	936,811	330,306,557
Income related to contra accounts for allowance for bonuses (Note)		280,712,018
Income related to contra accounts for allowance for retirement benefits (Note)		34,141,109
Financial income		
Interest received	108,461	108,461
Sundry income		
Income from the Japanese-Language Proficiency Test	320,969,630	
Other sundry income	724,016,330	1,044,985,960
Total ordinary income		16,216,285,033
Ordinary loss		136,305,415
Extraordinary losses		
Loss on retirement of fixed assets		4,787,839
Impairment loss		20,082,245
		24,870,084
Extraordinary profits		
Reversal of contra accounts for assets funded by operational grants (Note)		22,421,619
Profits on sales of fixed assets		380,060
		22,801,679
<b>Net loss for the term</b>		<b>134,237,010</b>
<b>Reversal of reserve carried over from previous mid-term target period (Note)</b>		<b>13,398,759</b>
<b>Gross profit for the term</b>		<b>147,635,769</b>

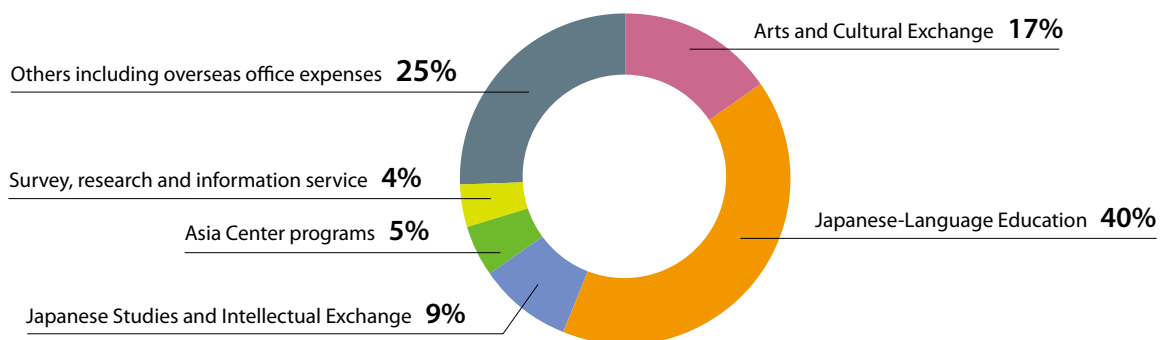
(Note) These are the accounts associated with the accounting procedures specific to Incorporated Administrative Agency.

## Statement of Profit Disposition (July 21, 2021)

(Unit: JPY)

<b>I Unappropriated profit at the end of the term</b>		<b>147,635,769</b>
Gross profit for the term		147,635,769
<b>II Appropriation of retained earnings</b>		
Reserve		147,635,769
		147,635,769

## FY2020 expenditure composition ratio by project field





# The Japan Foundation's Global Network



## Overseas offices

- 1 Italy**  
The Japan Cultural Institute in Rome  
URL: <https://www.jfroma.it/>  
(Italian/Japanese)
- 2 Germany**  
The Japan Cultural Institute in Cologne  
URL: <https://www.jki.de/>  
(German/Japanese)
- 3 France**  
The Japan Cultural Institute in Paris  
URL: <https://www.mcjp.fr/>  
(French/Japanese)
- 4 South Korea**  
The Japan Foundation, Seoul  
URL: <https://www.jpfor.kr/>  
(Korean/Japanese)
- 5 China**  
The Japan Foundation, Beijing  
URL: <https://www.jpfbj.cn/>  
(Chinese/Japanese)
- 6 Indonesia**  
The Japan Foundation, Jakarta  
URL: <https://www.jpfor.id/en/>  
(Indonesian/English/Japanese)
- 7 Thailand**  
The Japan Foundation, Bangkok  
URL: <https://www.jfbkk.or.th/>  
(Thai/English/Japanese)
- 8 Philippines**  
The Japan Foundation, Manila  
URL: <https://www.jfmo.org.ph/>  
(English)
- 9 Malaysia**  
The Japan Foundation, Kuala Lumpur  
URL: <https://www.jfkl.org.my/>  
(English)
- 10 Myanmar**  
The Japan Foundation, Yangon  
URL: <https://yg.jpfor.jp/>  
(Burmese/English)
- 11 India**  
The Japan Foundation, New Delhi  
URL: <https://www.jfindia.org.in/>  
(English)
- 12 Australia**  
The Japan Foundation, Sydney  
URL: <https://www.jpf.org.au/>  
(English)
- 13 Canada**  
The Japan Foundation, Toronto  
URL: <https://www.jftor.org/>  
(English)
- 14 U.S.**  
The Japan Foundation, New York Center for Global Partnership (NY)  
URL: <https://www.jfny.org/>  
(English)
- 15 U.S.**  
The Japan Foundation, Los Angeles  
URL: <https://www.jflalc.org/>  
(English)
- 16 Mexico**  
The Japan Foundation, Mexico  
URL: <https://www.fjmex.org/>  
(Spanish)
- 17 Brazil**  
The Japan Foundation, São Paulo  
URL: <https://fjisp.org.br/>  
(Portuguese)
- 18 UK**  
The Japan Foundation, London  
URL: <https://www.jpf.org.uk/>  
(English)
- 19 Spain**  
The Japan Foundation, Madrid  
URL: <https://www.fundacionjapon.es/>  
(Spanish/Japanese)
- 20 Hungary**  
The Japan Foundation, Budapest  
URL: <https://www.japanalapitvany.hu/en>  
(Hungarian/English/Japanese)
- 21 Russia**  
The Japanese Culture Department  
"The Japan Foundation" of the All-Russia State Library for Foreign Literature  
URL: <https://www.jpfmw.ru/>  
(Russian/Japanese)
- 22 Egypt**  
The Japan Foundation, Cairo
- 23 Vietnam**  
The Japan Foundation Center for Cultural Exchange in Vietnam  
URL: <https://jpf.org.vn/>  
(Vietnamese/Japanese)
- 24 Cambodia**  
The Japan Foundation Asia Center, Phnom Penh Liaison Office  
URL: <https://jfpnh.org/>  
(Khmer/English)
- 25 Laos**  
The Japan Foundation Asia Center, Vientiane Liaison Office  
URL: <https://jfacvt.la/>  
(Laos/English)

## Headquarters, affiliated organizations and branch in Japan

### The Japan Foundation Headquarters

1-6-4 Yotsuya, Shinjuku-ku, Tokyo 160-0004  
Phone: 81-3-5369-6075 Fax: 81-3-5369-6044  
URL: <https://www.jpfor.jp/e/index.html>

#### Library

Phone: 81-3-5369-6086 Fax: 81-3-5369-6044  
URL: <https://www.jpfor.jp/e/about/jfic/lib/index.html>

### The Japan Foundation Japanese-Language Institute, Urawa

5-6-36 Kita-Urawa, Urawa-ku Saitama City, Saitama, 330-0074, Japan  
Phone: 81-48-834-1180 Fax: 81-48-834-1170  
URL: <https://www.jpfor.jp/e/urawa/index.html>

#### Library

Phone: 81-48-834-1185 Fax: 81-48-830-1588  
URL: [https://www.jpfor.jp/e/urawa/e\\_library/e\\_library.html](https://www.jpfor.jp/e/urawa/e_library/e_library.html)

### The Japan Foundation Japanese-Language Institute, Kansai

3-14 Rinku Port Kita, Tajiri-cho, Sennan-gun, Osaka, 598-0093, Japan  
Phone: 81-72-490-2600 Fax: 81-72-490-2800  
URL: [https://kansai.jpfor.jp/index\\_en.html](https://kansai.jpfor.jp/index_en.html)

#### Library

Phone: 81-72-490-2605 Fax: 81-72-490-2805  
URL: <https://kansai.jpfor.jp/en/library/>

### The Japan Foundation Kyoto Office

3rd Floor, Kyoto International Community House, 2-1 Torii-cho, Awataguchi, Sakyo-ku Kyoto City, Kyoto, 606-8436 Japan  
Phone: 81-75-762-1136 Fax: 81-75-762-1137  
URL: <https://www.jpfor.jp/e/world/kyoto.html>

# Committees (FY2020)

The persons listed below act as members for the Japan Foundation's committees  
(In alphabetical order, names listed without honorifics, titles and positions as of FY2020)

## American Advisory Committee for Japanese Studies

**Michael Bourdaghs**  
University of Chicago (Literature)

**Lee Branstetter**  
Carnegie Mellon University (Economics)

**Julie Nelson Davis**  
University of Pennsylvania (History of Art)

**Alisa Freedman**  
University of Oregon (Modern Japanese Literature)

**Andrew Gordon**  
Harvard University (History)

**Eiko Ikegami**  
The New School (Sociology)

**R. Keller Kimbrough**  
University of Colorado Boulder (Literature)

**Patricia Maclachlan**  
University of Texas at Austin (Political Science)

**Laura Miller**  
University of Missouri–St. Louis (Anthropology)

**Mari Noda**  
Ohio State University (Linguistics and Language Pedagogy)

**Morgan Pitelka**  
University of North Carolina at Chapel Hill (History)

**Steven Vogel**  
University of California, Berkeley (Political Science)

**Kären Wigen**  
Stanford University (Geography and History)

**Duncan Ryuken Williams**  
University of Southern California (Religious Studies)

**Christine Yano**  
University of Hawaii at Manoa (Anthropology and Cultural Studies)

## Advisory Committee of The Japan Cultural Institute in Paris

● From France

**Augustin Berque**  
Retired Professor, L'Ecole des Hautes Etudes en Science Sociales (EHESS)

**Philippe Faure**  
Former French Ambassador to Japan

**Jean Maheu**  
Honorary Director, Theatre de la Ville

**Jean-Robert Pitte**  
Chairman, French Geographical Society

**Christian Sautter**  
Former Minister of the Economy, Finance and Industry

**Louis Schweitzer**  
Special Representative of the Minister of Foreign Affairs of Europe for France-Japan Partnership

**Diane de Selliers**  
President, Diane de Selliers Press

● From Japan

**HAYAMA Reiko**  
Architect

**HORIBA Atsushi**  
Chairman and Group CEO, Horiba, Ltd.

**ITO Junji**  
Art Critic; Administrative Professor, Tokyo University of the Arts Public Collaboration Center

**KASHIWAKURA Yasuo**  
Professor Emeritus, The Open University of Japan

**MATSUURA Koichiro**  
Former Director-General of UNESCO

**NISHIGAKI Toru**  
Professor Emeritus, The University of Tokyo; Professor, Tokyo Keizai University

**OGINO Anna**  
Writer; Professor, Faculty of Letters, Keio University

**OHYAGI Shigeo**  
Advisor, TEIJIN LIMITED

**SAKAI Tadayasu**  
Director, Setagaya Art Museum

**TSUJIHARA Noboru**  
Writer; Director, Kanagawa Museum of Modern Literature

## The Japan Foundation Asia Center Advisory Committee

● From Japan

**CHIBANA Kurara**  
Model; Ambassador of Japan, World Food Programme (WFP)

**HASEGAWA Michiko**  
Professor Emeritus, Saitama University

**INOKO Toshiyuki**  
CEO, teamLab Inc.

**INOUE Hiroshi**  
Advisor, Tokyo Broadcasting System Television, Inc.

**ISHII Eriko**  
Professor, Tokyo Women's Christian University; Chairperson, The Society for Teaching Japanese as a Foreign Language

**KATO Masaya**  
Actor

**KOSHINO Junko**  
Designer

**MIYASAKO Masaaki**  
Professor Emeritus, Tokyo University of the Arts; Japanese-style Painter

**SAKOMOTO Jay**  
President, Shochiku Co., Ltd.

**TORII Shingo**  
Vice Chairman of the Board, Suntory Holdings Ltd.

**YAMAUCHI Masayuki (Chairperson)**  
Professor Emeritus, The University of Tokyo

● From ASEAN

**Dato Paduka Hamdillah H A Wahab**  
(Brunei) Founding Director, Brunei-Japan Friendship Association (BJFA)

**Pou Sothirak**  
(Cambodia) Executive Director, The Cambodian Institute for Cooperation and Peace; Government Advisor

**Riri Riza**  
(Indonesia) Film Director

**Phonethepvixay Saythilath**  
(Laos) Singer; Director, Kaona Entertainment Co., Ltd.

**Datuk Lat**  
(Malaysia) Cartoonist

**Lahpai Seng Raw**  
(Myanmar) Founder and Former Director, Metta Development Foundation

**Ambeth R. Ocampo**  
(Philippines) Associate Professor, Department of History, Ateneo de Manila University

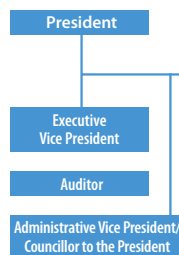
**Goh Ching Lee**  
(Singapore) Founder, Executive and Artistic Director, CultureLink Singapore

**Kitti Prasirtsuk**  
(Thailand) Professor, Department of Political Science, Thammasat University

**Nguyen Van Chinh**  
(Vietnam) Associate Professor, Head, Department of Anthropology, University of Social Sciences and Humanities, Hanoi

# Organization

As of October 1, 2021



Headquarters	
General Affairs Department	General Affairs Division Information Disclosure Office Security Management Office Personnel Division Remuneration and Personnel Evaluation Office Branch Offices Division Office for the Japanese Cultural Institute in Paris Information Systems Division
Financial Affairs Department	Budget and Finance Division Budgetary Control Office Accounting and Contract Managing Division
Planning Department	Policy Planning Division Program Planning and Coordination Division
Arts and Culture Group	
Arts and Culture Department	Planning and Coordination Section Performing Arts Section Visual Arts Section
Film and Broadcast Media Department	Film Section Broadcast Media Section
The Japan Foundation China Center	
Japanese-Language Group	
Japanese-Language Department I	Planning and Coordination Section International Operations Section I International Operations Section II
Japanese-Language Department II	Planning and Development Section
Center for Japanese-Language Testing	Test Operation Section Test Development Section
Japanese Studies and Intellectual Exchange Group	
Japanese Studies and Intellectual Exchange Department	Planning and Coordination/Americas Section Asia and Oceania Section Europe, Middle East and Africa Section
The Japan Foundation Center for Global Partnership	
Youth Exchange Bureau	
The Japan Foundation Asia Center	Planning and Coordination Section Japanese Language Program Section I Japanese Language Program Section II Arts, Culture and Exchange Section I Arts, Culture and Exchange Section II
Communication Center	
Audit Bureau	
Affiliated Organizations	
Japanese-Language Group	
The Japan Foundation Japanese-Language Institute, Urawa	Teachers Training Section Research and Development Section
The Japan Foundation Japanese-Language Institute, Kansai	Educational Training Section Educational Media Development Section
Branch	
The Japan Foundation Kyoto Office	
Overseas Offices	
The Japan Cultural Institute in Rome The Japan Cultural Institute in Cologne The Japan Cultural Institute in Paris The Japan Foundation, Seoul The Japan Foundation, Beijing The Japan Foundation, Jakarta The Japan Foundation, Bangkok The Japan Foundation, Manila The Japan Foundation, Kuala Lumpur The Japan Foundation, Yangon The Japan Foundation, New Delhi The Japan Foundation, Sydney The Japan Foundation, Toronto The Japan Foundation, New York The Japan Foundation, Los Angeles The Japan Foundation, Mexico The Japan Foundation, São Paulo The Japan Foundation, London The Japan Foundation, Madrid The Japan Foundation, Budapest The Japanese Culture Department "Japan Foundation" of the All-Russia State Library for Foreign Literature The Japan Foundation, Cairo The Japan Foundation Center for Cultural Exchange in Vietnam The Japan Foundation Asia Center, Phnom Penh Liaison Office The Japan Foundation Asia Center, Vientiane Liaison Office	

# Websites and Social Media

## Websites and Social Media

### ■ The Japan Foundation official website

<https://www.jpf.go.jp/e/>

The Japan Foundation provides a wealth of information and resources online, including information about our programs and upcoming events, how to apply to participate in various applicable programs on the Japan Foundation website, Japanese-language teaching materials, past survey reports and links to our overseas offices.



The Japan Foundation has established respective official websites for the programs of The Japan Foundation Center for Global Partnership, The Japan Foundation China Center and The Japan Foundation Asia Center.

- The Japan Foundation Center for Global Partnership <https://www.jpf.go.jp/cgp/e/index.html>
- The Japan Foundation China Center (Heart to Heart) <https://www.chinacenter.jp/?lang=cn>
- The Japan Foundation Asia Center <https://jfac.jp/en/>

### ■ Online content (videos, reading materials)

The Japan Foundation offers videos of performances, exhibitions, lectures, seminars and other events that can be enjoyed online as well as such other online content as interviews with and contributions from people who are active at the frontlines of cultural exchange.

- JF digital collection [https://www.jpf.go.jp/e/project/digital\\_collection/index.html](https://www.jpf.go.jp/e/project/digital_collection/index.html)
- Web magazine Wochi Kochi Magazine <https://www.wochikochi.jp/english/>
- Performing Arts Network Japan <https://performingarts.jpf.go.jp>
- Japanese Film Website JFF+ <https://jff.jpf.go.jp/>

### ■ Information on Japanese-Language Education

#### Tests

- Japanese-Language Proficiency Test (JLPT) <https://www.jlpt.jp/e/>
- The Japan Foundation Test for Basic Japanese (JFT-Basic) <https://www.jpf.go.jp/jft-basic/e/index.html>

#### Support for Japanese-Language Teachers

The Japan Foundation provides a wide range of information on Japanese-language teacher trainings, Japanese-language teaching materials as well as ideas for classes and voices of people at overseas Japanese-language educational institutions.

- Teach Japanese <https://www.jpf.go.jp/e/project/japanese/teach/index.html>

#### Support for Japanese-Language Learners

The Japan Foundation provides teaching materials for learning Japanese, e-learning sites for online learning, videos and web-based teaching materials.

- Learn Japanese <https://www.jpf.go.jp/e/project/japanese/education/index.html>

#### State of Japanese-Language Education

The Japan Foundation provides the report entitled *Survey Report on Japanese-Language Education Abroad* that covers the entire world and information such as on the state of Japanese-language education in each country.

- Research on Japanese-Language Education <https://www.jpf.go.jp/e/project/japanese/survey/index.html>

### ■ Materials / Resources / Databases

#### Translation/publishing

The Japan Foundation provides information on Japanese literary works translated into foreign languages.

- Japanese Literature in Translation Search <https://jltrans-opac.jpf.go.jp/>
- Worth Sharing - A Selection of Japanese Books Recommended for Translation <https://www.worthsharing.jpf.go.jp/en/>

#### Films

The Japan Foundation disseminates information in Japanese and English on more than approximately 6,200 Japanese films.

- Japanese Film Database <https://jfdb.jp/en/>

## Social media



- YouTube channel <https://www.youtube.com/user/thejapanfoundation>



- The Japan Foundation Official facebook <https://www.facebook.com/TheJapanfoundation>
- The Japan Foundation China Center Official facebook <https://www.facebook.com/JF.Xinlianxin>
- The Japan Foundation Asia Center Official facebook <https://www.facebook.com/jfasiacenter/>
- NIHONGO Partners Program Official facebook <https://www.facebook.com/jfnihongopartners/>



- The Japan Foundation Official Twitter <https://twitter.com/japanfoundation>
- The Japan Foundation Asia Center Official Twitter <https://twitter.com/jfasiacenter>





**The Japan Foundation Annual Report 2020-2021**

Published in March 2022. Written, edited and published by: The Japan Foundation Communication Center  
1-6-4 Yotsuya, Shinjuku-ku, Tokyo 160-0004, Japan Phone: 81-3-5369-6075 Fax: 81-3-5369-6044  
Editing and production: FBI Communications, Inc.