

ANNUAL REPORT

THE JAPAN FOUNDATION

2021-2022

Cultivating friendship and ties between Japan and the world

Through culture, language and dialogue, the Japan Foundation creates opportunities to foster friendship, trust and mutual understanding between Japan and other countries/regions.

The Japan Foundation is Japan's only institution dedicated to carrying out comprehensive international cultural exchange programs throughout the world. The three major focuses of our activities are Arts and Cultural Exchange, Japanese-Language Education Overseas, and Japanese Studies and Intellectual Exchange. The Japan Foundation has a global network consisting of the Tokyo Headquarters, the Kyoto Office, two affiliated organizations (the Japan Foundation Japanese-Language Institute, Urawa; and the Japan Foundation Japanese-Language Institute, Kansai) and 25 overseas offices. We are working to facilitate exchange in a variety of fields with the aim of further deepening mutual understanding and ties between Japanese people and the world.

Culture

Arts and Cultural Exchange

Coming into contact with arts and cultures from other countries generates and stimulates people's interest and empathy beyond language barriers. By introducing diverse aspects of Japanese arts and culture to people around the world, we bring people closer together.

Language

Japanese-Language Education Overseas

Teaching the Japanese language to people outside Japan helps to increase their interest in and understanding of Japan. We work to enhance Japanese-language learning environments around the world to provide more people with opportunities to study Japanese.

Dialogue

Japanese Studies and Intellectual Exchange

The enhancement of Japanese Studies overseas will lead to deeper mutual understanding between Japan and other countries. The Japan Foundation also promotes intellectual exchange through symposia and collaborative projects pertinent to global issues.

FIELDS

The Japan Foundation develops programs in three different fields —Arts and Cultural Exchange, Japanese-Language Education Overseas, and Japanese Studies and Intellectual Exchange.

ORGANIZE

The Japan Foundation plans and organizes exhibitions, stage performances and international conferences. We also create programs that invite cultural leaders to Japan to foster networking and provide hands-on experiences in Japan.

SUPPORT

The Japan Foundation supports people actively engaged in cultural exchange by partial funding and the provision of useful tools, opportunities and venues.

APPROACHES

The Japan Foundation supports people who are active in a wide range of cultural fields and creates opportunities and environments that enable continuous interchanges.

NETWORKING / INFORMATION

Gathering the information and materials needed by people active in cultural exchange and helping them to develop personal networks, the Japan Foundation is continually building the foundations of international cultural exchange and expanding its outreach.

JAPAN FOUNDATION HISTORY

1972	The Japan Foundation established
1973	The Japan Foundation Awards established
1984	Japanese-Language Proficiency Test (JLPT) launched
1985	The Japan Foundation Prizes for the Promotion of Community-based Cultural Exchange established (renamed the Japan Foundation Prizes for Global Citizenship in 2005)
1989	The Japan Foundation Japanese-Language Institute, Urawa established in Saitama Prefecture
1990	The Japan Foundation ASEAN Culture Center established
1991	The Japan Foundation Center for Global Partnership (CGP) established
1995	The Japan Foundation ASEAN Culture Center reorganized into the former Japan Foundation Asia Center (~2004)
1997	The Japan Foundation Japanese-Language Institute, Kansai established in Osaka Prefecture
2003	The Japan Foundation became an "Incorporated Administrative Agency"
2006	The Japan Foundation China Center established
2014	The Japan Foundation Asia Center established
2019	Japan Foundation Test for Basic Japanese (JFT-Basic) launched
2022	50th anniversary of the Japan Foundation

THE JAPAN FOUNDATION
2021-2022

Contents

01 About the Japan Foundation (JF) >

04 Message from the President >

The Activities of the Japan Foundation

05 PICK UP FY2021 >

07 Culture: Arts and Cultural Exchange >

11 Language: Japanese-Language Education Overseas >

15 Dialogue: Japanese Studies and Intellectual Exchange >

19 The Japan Foundation Asia Center >

22 Awards >

23 Overseas Office Initiatives in FY2021 >

Data

Program Activity Summaries

27 Summary of Arts and Cultural Exchange Programs >

28 Summary of Japanese-Language Education Overseas Programs >

29 Summary of Japanese Studies and Intellectual Exchange Programs >

30 Summary of the Japan Foundation Asia Center Programs >

31 Financial Cooperation from the Private Sector >

33 Financial Statements >

36 The Japan Foundation's Global Network >

37 Committees / Organization >

38 Websites and Social Media >

Message from the President



Following the previous year, FY2021 was another year affected by the spread of Covid-19. In these circumstances, the Japan Foundation has continued its endeavor to promote its international cultural exchange programs while exploring various means such as the use of IT, to create opportunities to connect Japan and the world through “culture,” “language,” and “dialogue” and to nurture empathy and trust among people, so as to ensure that such opportunities never cease.

In the field of culture, we launched “STAGE BEYOND BORDERS—Selection of Japanese Performances—,” the online distribution of 92 stage performances drawn from a variety of sources including outstanding Japanese contemporary theater, dance performances and traditional performing arts, with multilingual subtitles. As of the end of FY2021, it had been viewed over 9.5 million times by people in 111 countries and regions, including some who had not previously had the opportunity to appreciate theater. Furthermore, a total of 320,000 people watched the Japanese Film Festival Online 2022, which was held for two weeks in February 2022 in 25 countries and showed 20 films ranging from classics to the latest releases. We also held in-person activities after taking the appropriate measures to prevent infection. For example, we held Japanese art exhibitions in Germany and Poland, participated in La Biennale di Venezia, an architectural exhibition in Italy and organized Japan Foundation traveling exhibitions. Through these and other means, we provided opportunities for people around the world to interact with Japanese culture directly.

In the field of language, we provided various online courses through *JF Japanese e-Learning Minato* so that more people could learn Japanese easily and comfortably. By the end of FY2021, the number of registered users had risen to over 290,000 people from 199 countries and regions. We also administered the Japan Foundation Test for Basic Japanese (JFT-Basic) in Japan and nine other countries. The test measures the level of Japanese language proficiency needed by foreign nationals about to reside in Japan mainly for work, to communicate in everyday life situations. Additionally, we launched the *Irodori Japanese Online Course*, a self-study program that teaches foreign nationals living overseas who wish to live and work in Japan

the Japanese language communication skills they will need for daily life.

We endeavor to understand the state of rising interest in Japanese around the world through the “Survey on Japanese-Language Education Abroad” that we have conducted regularly since 1974. The results of the most recent survey, which was conducted in 2021, will be released in 2022. The survey analysis report based on the situation on the ground will be used for the planning of JF’s future project proposals, and it is also expected to be useful to many others and lead to the birth of new collaborations.

When it came to dialogue, as a result of the coronavirus crisis, with a few exceptions, in FY2020 we were forced to cancel the support in the form of fellowships for researching in Japan that we had provided to Japanese Studies scholars and researchers around the world who contributed to a greater understanding of Japan. However in FY2021 we have begun to work on reactivating the movement of people between countries. For example, we assisted scholars and researchers as they took the necessary quarantine measures to enter Japan, and facilitated the visits of 150 scholars to the country.

2022 marks the 50th anniversary of JF since its establishment in 1972. While reflecting on our past journey in bringing Japan and the world closer together through culture amidst the changing international situation around Japan and ever-evolving technological innovation, we will strive our utmost to strengthen ties with people around the world, backed by trust in Japan and mutual friendship in current turbulent international circumstances.

We would appreciate your continued understanding and support.

September 2022

The Japan Foundation President
UMEMOTO Kazuyoshi

PICK UP FY 2021

To fulfill JF's mission of "cultivating friendship and ties between Japan and the world" even during the prolonged COVID-19 crisis, in FY2021 we continued to explore various ways to carry out our activities making use of online and other means. Here is a selection of the activities that attracted the most attention.



STAGE BEYOND BORDERS—Selection of Japanese Performances— Attracting People All Over the World

We distributed Japanese stage performances with multilingual subtitles. In FY2021 we distributed a total of 92 works, which were viewed 9.5 million times in 111 countries and regions. 50 of those works were presented in collaboration with the executive committee of the Emergency Performing Arts Archives and Digital Theater Support Project (EPAD), which was formed to support performance troupes struggling during the coronavirus crisis.

ひきだすにほんご Activate Your Japanese! Japanese-Language Learning Program

The Japan Foundation, in collaboration with NHK Educational, has developed a new TV series that introduces Japanese society and culture and teaches the Japanese language, with audiences seeking to live and work in Japan as its main target. The series started world-wide broadcast and online distribution through NHK WORLD-JAPAN.

The drama part of the series features the growth of the main character Xuan, a Vietnamese person who goes to Japan to work in a hotel.





An interview with YOKOHAMA Satoko, director, and KOMAI Ren, star of the movie *Itomichi* at the Japanese Film Festival Online

Japanese Film Festival Online 2022

We started the Japanese Film Festival Online as a new initiative in FY2020. In February 2022, it was expanded to 25 countries and held over a two-week period. A broad lineup of 20 Japanese films was broadcast for free with subtitles in 15 languages, with a total of 320,000 viewers and a view count of 540,000. We held simultaneous special screenings and events featuring guests in various countries, and the exchanges held online were very well received as well.



Online Book Club

As part of our support for Japanese language learning activities, the Japan Foundation offices in Rome, Cologne, Madrid and Budapest jointly organized an online book club. Intermediate and advanced learners from various countries and regions discussed Japanese literary works using Japanese as a common language.

CGP and the Asahi World Forum 2021

We held a special co-organized session at the Asahi World Forum 2021. Dialogues and panel discussions about post-coronavirus society were streamed online and watched by over 6,000 people in real time while the archived videos were watched by over 10,000 people.



Source: The Asahi Shimbun

From right to left: FUKUOKA Shin-Ichi (Professor, Aoyama Gakuin University; Visiting Professor, Rockefeller University.), Michael Sandel (Professor, Harvard University), NAGANO Tomoko (Newscaster, journalist)



The graduation ceremony for the six foreign residents living in Japan who underwent the top class *Nakai* training

Introducing Japanese Television Programs

The Japanese Hospitality Challenge - Bride & Pride Spin off, a documentary produced together with Tokai Television, featuring six foreign residents living in Japan who undergo the top class *Nakai* (staff at ryokan who welcome, serve and attend to the needs of their guests) training at a long-established traditional Japanese inn, was provided to seven countries in Africa, Eastern Europe and South and Central America. In response to changes in the program viewing environment, in addition to the television broadcast, we also offered a format suitable for broadcasting over the internet to certain TV stations overseas.

JOI Program and Nippon Broadcasting System, Inc. Present "Common Occurrences in the American South, Midwest and Mountain States?"

To commemorate the 20th anniversary of the Japan Outreach Initiative (JOI) Program, a special corner hosted by comedian ATSGIRI Jason was broadcast on the radio program "All Night Nippon" for one month. A YouTube program was also streamed as a special edition.



Radio program banner



ATSGIRI Jason, program host



Japanese cooking and food culture: Japanese traditional New Year* food
Lecturer: OOHASHI Naoko (Japanese food researcher)

Online Japanese Culture Seminars at Centers for "Face-to-Face Exchanges" in China

We held online seminars on topics that Chinese students are highly interested in (in FY2021 this was interpretation, voice actors, writing of literature, traditional Japanese musical instruments, traditional Japanese sweets and Japanese cooking) through the Centers for "Face-to-Face Exchanges" in China.

Culture

Arts and Cultural Exchange

Coming into contact with arts and cultures from other countries generates and stimulates people's interest and empathy beyond language barriers.

By introducing diverse aspects of Japanese arts and culture to people around the world, we bring people closer together.



Top: *Rimpa feat. Manga* (Munich, 2021-2022) MFK, Photo: Nicolai Kästner
Middle: *The Japanese Hospitality Challenge - Bride & Pride Spin off*

Bottom: University student exchange program (Zhaojiao (Showa Women's University) and the Xining Center for "Face-to-Face Exchanges") Spring 2022

Introducing Japan's Rich Arts and Culture to the World

We carry out a variety of attractive projects in a broad range of areas from traditional to contemporary arts, including stage performances, exhibitions, translation and publication, films and television to introduce people around the world to the richness of Japanese arts and culture. Although the ongoing coronavirus crisis makes face-to-face exchanges between people and holding events where people gather difficult, we sought to continue our activities as much as possible while taking measures to prevent infection. We also worked to deliver Japanese culture and arts to an even broader audience and deepen exchanges with people from each country by utilizing online communications.



Holding Large Exhibitions During the Coronavirus Crisis

We successfully held the *Between Collectivism and Individualism - Japanese Avant-Garde of the 1950s and 60s* exhibition in Poland after two postponements and despite it being a difficult time to hold events. It was the first ever exhibition of a collection of Japanese post-war avant-garde art in the country and attracted almost 40,000 visitors. The exhibition is the fruit of the research that Maria Brewińska, curator of the Zachęta - National Gallery of Art where the exhibition was held, conducted when she visited Japan as one of the recipients of the FY2019 Ishibashi Foundation/The Japan Foundation Fellowship for Research on Japanese Art. Apart from these, we also organized the *Rimpa feat. Manga* exhibition marking 160 years of Japan-Germany Friendship, and the Japan Pavilion exhibit *Co-ownership of Action: Trajectories of Elements* at the 17th International Architecture Exhibition - La Biennale di Venezia, the first since COVID-19, and received over 170,000 visitors.

Between Collectivism and Individualism - Japanese Avant-Garde of the 1950s and 60s
Zachęta - National Gallery of Art (Warsaw) 2021
Photo: Jakub Celej / Zachęta Archive, CC BY-SA. 40 International



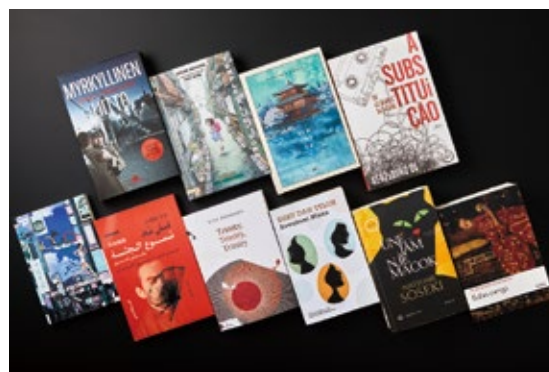
Looking Back on Eight International Creations in Performing Arts—Online Talk Session: From the Perspective of Process Observers (February 2022)
Photo: Yuta Hinohara

International Creations in Performing Arts

The International Creations in Performing Arts Program was introduced in the previous year, and in FY2021 it produced eight diverse works of performing arts including plays, musicals, online theater and dance. To widely disseminate the process of international creation where Japanese and international artists search for new expressions together, and so that the process can be helpful in the planning of future international collaborations, we started a new initiative where a third party acting as an observer records the production process and releases the resulting report. At online symposia held with the observers, we discussed situations surrounding each project and the ideal state of international creation.

International Exchanges Through Books

We continue to support the translation and publication of Japanese books overseas. In FY2021, we provided grant assistance for 30 translations in 21 countries. Out of those, Temple Alley Summer written by KASHIWABA Sachiko and translated by Avery Fischer Udagawa won the American Library Association's Batchelder Award for outstanding children's book and received a lot of attention. We also created a "Lifelong Favorites" section of children's books in our *Worth Sharing—A Selection of Japanese Books Recommended for Translation* list and added 59 Japanese children's books to the section to encourage their translation and publication in various countries. Another main project of the year is "Writing to Meet You: Letters for Secluded Times". Three pairs of Japanese and overseas authors wrote about their daily lives during the COVID-19 pandemic and their feelings about creation in essays in the form of bound correspondence, which we published on a website. The exchange of feelings between authors in an age of disconnection drew voices of sympathy that crossed national boundaries.



Books that received grants for translation and publication in FY2021 (a selection) Photo: Yuta Hinohara
HIGASHINO Keigo, *Seijo no kyusai* [trans: *Salvation of a Saint*], Finnish edition (Kustantamo Punainen Silakka), KASHIWABA Sachiko, *Kimyoji yakochi no natsu* [trans: *Temple Alley Summer*], English edition (Restless Books), MISHIMA Yukio, *Kinkakujō* [trans: *The Temple of the Golden Pavilion*], Vietnamese edition (Nhã Nam Publishing and Communications), OE Kenzaburo, *Torikae ko* [trans: *The Changeling*], Portuguese edition (Estação Liberdade), YU Miri, *JR Ueno eki koen guchi* [trans: *Tokyo Ueno Station*], Italian edition (21lettere), KOSAKAI Fuboku, *Shitai rossoku* [trans: *Body Candles and Other Stories*], Arabic edition (Mahrousa Center for Publishing, Press and Information Services), KOBAYASHI Erika, *Torinaito, torinaito, torinaito* [trans: *Trinity, Trinity, Trinity*], French edition (Editions Dalva), KAWAKAMI Mieko, *Natsu Monogatari* [trans: *Breasts and Eggs*], Indonesian edition (Mooni Pustaka), NATSUME Soseki, *Wagahai wa reko de aru* [trans: *I Am a Cat*], Albanian edition (OMBRA GVG), TANIZAKI Junichiro, *Sasame yuki* [trans: *The Makioka Sisters*] Georgian edition (Diogene Publishers)

Japanese Film Screenings Around the World

We held Japanese film screenings in 47 countries and regions with a total of 93,000 audiences despite the significant ongoing impact of COVID-19. Some of the programs were the first screenings after the reopening of movie theaters that had been closed down for a long time due to COVID-19, so they received a lot of coverage from the mass media in their countries as well as the gratitude of audiences and co-sponsoring organizations.



Opening ceremony of Japanese Film Festival in Malaysia



Japanese Film Festival in Turkey

Japanese Film Festival in Singapore

In Singapore, which commemorated 55 years since the establishment of diplomatic relations between Japan and Singapore this fiscal year, we have held a hybrid Japanese Film Festival (JFF) featuring a combination of screenings at movie theaters and online distribution since FY2020. After the screenings, we used Zoom to hold online Q&A sessions with film-related persons. We also organized programmers' talks and master classes using webinars, all in pursuit of a new kind of film festival that suits the "new normal."



At the Japanese Film Festival in Singapore



YAMAZAKI Jun, Ambassador Extraordinary and Plenipotentiary of Japan to Singapore (left) and Kenneth Tan, Chairman of the Singapore Film Society (right)

Japanese Film Website JFF+

At the Japanese Film Website JFF+, we distribute movies from the Japanese Film Festival Online and related events, upload interviews and special features about Japanese films in multiple languages (mainly Japanese and English) and share the appeal of Japanese films from a variety of angles. In FY2021 the website recorded over 1.01 million unique users and approximately 2.97 million page views while the number of subscribers to the site's newsletter rose to around 120,000. <https://jff.jpf.go.jp>



Top image on the Japanese Film Website JFF+

Introducing Japanese Television Programs

We implement projects for introducing Japanese television programs that promote an understanding of Japan in countries and regions where there is difficulty in broadcasting and distributing Japanese content.

In FY2021, 489 Japanese television programs, including dramas, anime, variety shows, films and documentaries, were broadcast in 76 countries and regions.



Natsuzora: Natsu's Sky



GENIE FAMILY 2020



The Japanese Hospitality Challenge - Bride & Bride Spin off

The Japan Foundation China Center

The program, which primarily targets youth who will be the next generation of leaders in Japan and China, aims to promote mutual understanding by providing participants with opportunities to experience each other's culture and lifestyle, and to engage in dialogue and collaborative activities. It will continue to implement projects that emphasize interactivity and collaboration, aiming to build a deeper and longer-lasting Xin Lian Xin ("Heart to Heart" in Chinese).

*The Japan Foundation China Center was restructured into the Global Partnerships Department on April 1, 2022.

Program for Dialogue and Collaboration between Japanese and Chinese High School Students

The COVID-19 pandemic continued to make it difficult to hold exchanges involving travel in FY2021 as well. Under these circumstances, we implemented the Program for Dialogue and Collaboration between Japanese and Chinese High School Students, which aims to foster a sense of solidarity and cooperation among the youth of both nations through online dialogue and collaboration to enable high school students from Japan and China to deepen their mutual understanding of each other's culture and society and to solve shared problems such as school life and community issues.



Students from Huanggang Foreign Language School in China interacting with students from Kochi Prefectural Kochi Higashi High School

Centers for "Face-to-Face Exchanges" in China

Centers for "Face-to-Face Exchanges" are established in universities and other institutions in regional cities around China where opportunities to gain information about Japan are relatively limited. The centers provide venues where visitors can experience contemporary Japanese culture by browsing,

viewing and listening to the latest magazines, books, visual materials and other contents from Japan. At the centers, Japanese and Chinese youth interact through a wide variety of Japan-China exchange events, including seminars on Japanese culture by experts from both countries, using online formats.



University student exchange program (Panda x the Kunming Center for "Face-to-Face Exchanges") Fall 2021



Students of the Jinan Center for "Face-to-Face Exchanges" who participated in an event



University student exchange program (Zhaojiao (Showa Women's University) and the Xining Center for "Face-to-Face Exchanges") Spring 2022

Network Strengthening Programs

We implement a variety of programs emphasizing collaborative work with the aim of building networks among young people who will be the future bearers of Japan-China exchanges. In FY2021, we held the University Student Exchange Program, in which university students from both countries collaborate in planning and holding cultural events, as well as "RLEAD ASIA," an exchange program in which students from both countries engage in discussions using business as a pathway. Both programs were held online. We also operated the bilingual Japanese-Chinese "Heart to Heart" program website.

Language

Japanese-Language Education Overseas

Teaching the Japanese language to people outside Japan helps to increase their interest in and understanding of Japan. We work to enhance Japanese-language learning environments around the world to provide more people with opportunities to study Japanese.



Top: Showcasing Japanese Language and Cultural Lessons - An event held at a primary school in Kenya
Middle: Attending a JF Japanese e-Learning Minato class
Bottom: Introducing Irodori at a soccer academy (Cambodia)

Establishing Environments for Japanese-Language Education Overseas

Even with the various effects of the COVID-19 pandemic, the Japan Foundation carried out the following programs to promote the establishment of Japanese-language education environments in each country and region to ensure that high-quality Japanese-language education continues to be widely implemented.

Dispatch of Japanese-Language Specialists

Japanese-Language Specialists and Japanese-Language Assistants dispatched by the Japan Foundation to overseas universities and educational institutions (41 countries, 119 posts) used online and other means to train local Japanese-language teachers, give advice on

preparing teaching materials and Japanese-language teaching methods, support the formation of networks among teachers and visit educational institutions to offer guidance and provided support for issues and needs arising from the COVID-19 pandemic.



The Japan Foundation, Budapest held a Japanese mini-lesson on a special stage at MondoCon, Hungary's largest anime, manga and game festival



The Japan Foundation, Cairo, provided online learning opportunities for Japanese-language learners in Palestine

Support for Japanese-Language Education Institutions

The Japan Foundation actively supported Japanese-language education institutions around the world striving to deploy their educational activities online, including by purchasing e-books, amidst the prolonged COVID-19 pandemic.

The Japan Foundation also provided special support programs for

The JF Nihongo Network ("Sakura Network") members, which are core Japanese-language educational institutions/organizations located in each country. The Network also welcomed new members, with membership growing to 357 institutions in 102 countries/regions.



The 36th Karachi Japanese Speech Contest in Pakistan



Showcasing Japanese Language and Cultural Lessons - An event held at a primary school in Kenya



Japanese Teaching Methods Program for teachers of Specified Skilled Workers Candidates conducted by the Japan Foundation Japanese-Language Institute, Urawa

Training for Overseas Japanese-Language Teachers

We began a new program of providing online training on multiple topics for overseas Japanese-language teachers. It also used the on-demand teaching materials we tested in the previous fiscal year and provided an opportunity for them to learn theories of teaching methods and basic knowledge needed for guidance. Additionally, we invited Japanese-language teachers from institutions and organizations that teach Japanese to people who wish to come to Japan under the Specified Skilled Workers Program and trained them to improve their ability to teach the Japanese necessary for daily life and work.

Initiatives for Overseas Learners

To maintain the desire to learn even though visiting Japan remains difficult, we provided various opportunities to learn Japanese language for learners in various countries and regions. Our overseas offices organized Japanese-language lectures, speech contests and Japanese culture experience workshops. The Japan Foundation Japanese-Language Institute, Kansai held online home visits through the cooperation of the local community in addition to online workshops for the Kansai dialect and a virtual tour of Japan.



The virtual tour of Japan carried out by the Japan Foundation Japanese-Language Institute, Kansai



BMCN Annual Conference Overseas Heritage Japanese-Language Education Online Forum

Japanese-Language Education for Japanese Children Resident Overseas and for the Descendants of Migrants

With regards to the Japanese language education environment for the descendants of Japanese nationals who emigrated overseas and children with foreign and Japanese parents, the Japan Foundation co-sponsored part of the annual conference of the Bilingual/Multilingual Child Network (BMCN). We also carried out a survey of issues in the same field and provided DVD set of children's programs and Japanese children's books to heritage Japanese-language education organizations overseas. We also held seminars and built networks in Canada, South Korea, Australia, Singapore, Germany, Brazil and Mexico.

Enhancing Overseas Japanese-Language Teaching Methods and Proficiency Assessments of Japanese-Language Learners

To promote the Japanese language, the Japan Foundation provided new teaching methods and learning materials and implemented the Japan Foundation Test for Basic Japanese (JFT-Basic) in addition to the Japanese-Language Proficiency Test (JLPT) for Japanese-language learners.

Disseminating Information about Japanese-Language Teaching Methods and Providing Learning Materials Development and Operation of e-Learning

The JF Standard for Japanese-Language Education is a framework developed by the Japan Foundation for considering ways to learn and teach the Japanese language and make evaluations based on the concept of the Common European Framework of Reference for Languages (CEFR). We enhanced *Marugoto: Japanese Language and Culture* and *Irodori: Japanese for Life in Japan*, teaching materials based on the JF Standard. For *Marugoto*, we expanded the coursebook levels published in China and Vietnam and provided supporting teaching materials in multiple languages on the *Marugoto* website, while we enriched the contents of *Irodori*. We also collaborated with NHK Educational to develop *ひきだすにほんご Activate Your Japanese!*, a new TV series that introduces Japanese society and culture through Japanese-language learning.



Marugoto published in FY2021. Left: Elementary 1 (Chinese edition) Right: Intermediate 2 (Vietnamese edition)

Since demand for online education remains high, the number of registered users for the Japanese-language learning platform '*JF Japanese e-Learning Minato*' reached 292,400 people from 199 countries and regions, an increase of 70,000 from the previous fiscal year. Furthermore, in addition to developing *Irodori Japanese Online Course*, we also boosted our existing content. For example, we added infection-related vocabulary to *Nihongo de Care-Navi*.



Minato "Dekiru A1" self-study course produced for Hungarian speakers by the Japan Foundation, Budapest



Nihongo de Care-Navi, a Japanese-language learning website that collects terminology for nurses and care workers

Implementing Tests to Evaluate Japanese-Language Proficiency

Launched in 1984, the Japanese-Language Proficiency Test (JLPT) is the world's largest-scale test measuring the Japanese-language skills of non-native speakers. Despite the major impact of the spread of COVID-19, the July 2021 test was newly held in Papua New Guinea and Merida (Mexico). In total it was held in 47 prefectures in Japan, and 93 cities in 25 countries around the world. 387,371 people applied for the exam and 335,915 took it. For the December test, Lautoka (Fiji) was included for the first time, and the test was held in 47 prefectures in Japan and 175 cities in 68 countries with 420,210 applicants and 348,992 test-takers.



The Japanese-Language Proficiency Test (JLPT) being held in Lautoka (Fiji) for the first time in FY2021

Commenced in 2019, the Japan Foundation Test for Basic Japanese (JFT-Basic) is a computer-based test to measure the Japanese-language proficiency needed by foreign nationals about to reside in Japan mainly for work, to communicate in everyday life situations. In FY2021, the test began to be implemented in India, Sri Lanka and Uzbekistan, and 30,596 people (17,582 in FY2020) took the test in Japan and in 16 cities of nine countries in Asia.



The Japan Foundation Test for Basic Japanese (JFT-Basic) publicity materials for domestic use

Irodori Japanese Online Course based on the web-based teaching material Irodori: Japanese for Life in Japan

Japanese-Language Education Programs for New System of Acceptance of Foreign Human Resources

Apart from implementing the JFT-Basic, the Japan Foundation promoted initiatives in nine countries (China, Mongolia, Indonesia, Cambodia, Thailand, the Philippines, Vietnam, Myanmar and Nepal) to support the acquisition of Japanese-language proficiency by people aiming to live and work in Japan. We added four languages to the web-based Japanese-language teaching material *Irodori: Japanese for Life in Japan* for a total of 13 languages, and the material was accessed approximately 2.19 million times this fiscal year. Meanwhile around 54,000 users registered for the *Irodori Japanese Online Course* which was developed based on *Irodori: Japanese for Life in Japan*.

In various countries, Japanese-Language Specialists and "*Japanese for Life in Japan*" coordinators introduced *Irodori* and held seminars on how to teach using *Irodori*.

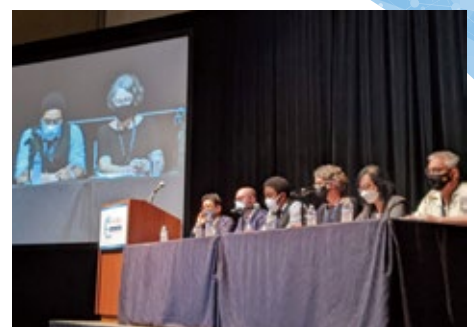


A "*Japanese for Life in Japan*" coordinator introducing JFT-Basic (Thailand)

Dialogue

Japanese Studies and Intellectual Exchange

The enhancement of Japanese Studies overseas will lead to deeper mutual understanding between Japan and other countries. The Japan Foundation also promotes intellectual exchange through symposia and collaborative projects pertinent to global issues.



Source: The Asahi Shimbun

Top: JF 50th Anniversary panel speakers
Bottom: CGP and the Asahi World Forum 2021, 2nd session on altruism

Japanese Studies Overseas and Intellectual Exchange

To deepen understanding of Japan overseas, the Japan Foundation is supporting Japanese Studies in various countries by providing opportunities, such as intellectual exchange projects for networking, that facilitate dialogue and collaboration between persons in Japan and overseas, which we hope will contribute to resolving global issues.

Producing the “Giants of Japanese Studies: The Lives of Donald Keene & Ezra Vogel” Documentary

We produced and released a documentary telling the life stories of Ezra Vogel, author of "Japan as Number One," who made peerless contributions towards a deeper understanding of Japan overseas, and Donald Keene, a Japanese literature scholar who devoted his life to broadcasting the appeal of Japan throughout the world. The

documentary looked back on their backgrounds and histories until they began Japanese Studies and told of their passions and hopes for Japanese Studies, interspersed with priceless images from their pasts and interviews with persons close to them.



The 3rd Collaborative Research Workshop for Aspiring Scholars in Japanese Studies

Since FY2018, we have been organizing workshops for graduate students of principal Japanese Studies institutions in Asia. In FY2021 the course was carried out online over three months, with 21 participants from 16 institutions in 8 countries/regions. With the cooperation of excellent lecturers from several different countries, course-takers considered the uniqueness and social significance of their research and

their careers as researchers. We also held a mock panel presentation as a practice of diverse collaborative research beyond locations and disciplines. Through this program, we encouraged the building of networks between the participants as well as other Japanese studies scholars.



International Japanese Studies Symposium

As part of the activities marking the 50th Anniversary of JF, at the 2022 Annual Conference of the Association for Asian Studies (AAS), we invited six Japanese Studies scholars from around the world to serve as speakers in a special panel session on the topic, "Strengthening Human Capital Pipelines for Area Studies – A Global Perspective." The main theme was "Nurturing human resources for the future development of Japanese Studies" and the various speakers presented and discussed innovative examples they are involved in from two angles: education such as creating curricula and educational programs, and research, such as research projects and methods.



Speakers at the AAS Annual Conference special panel session, a JF 50th-anniversary activity

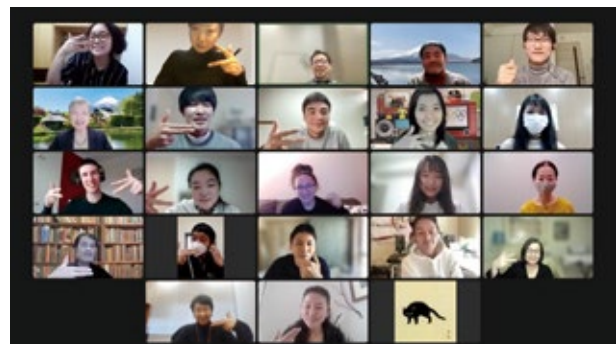
Releasing Cover Videos of the Easy Japanese Rap Song "Kind World" Worldwide

"Kind World" (Yasashii Sekai) is a rap song in plain-form Japanese with the message of "Using simple, easy-to-understand Japanese and creating a world with kind feelings in order to realize a multicultural and inclusive society." It was created by the Plain Japanese Tourism Initiative in cooperation with the Yamawaki Keizo Seminar at the School of Global Japanese Studies of Meiji University, and supported by the Japan

Foundation. JF asked for submissions of videos of people performing this rap song with their own original Japanese lyrics, and we received outstanding works that were unique and dynamic from all over the globe. We also held an online exchange between the students of Yamawaki Seminar who did the judging and the winners, and the winning entries and the Global Mix version were released on the JF YouTube Channel.



"Kind World" cover video (Global Mix made from winning entries)



Online exchange between the Excellence Award winners and students of Meiji University

Japanese-German Panel Discussion, "The Future of Communication and Us"

To address the issue of how to interact with digital communications are continuously developing in diverse ways, we held a symposium on the topic "The Future of Communication and Us" with the Japanese-German Center Berlin. Japanese and German experts held a highly insightful

online discussion on how to use evolving digital communications to coexist with people with a variety of opinions while prioritizing our own individuality and wellbeing.



Japanese-German panel discussion: Japanese-German Center title image



Japanese-German panel discussion: Japanese-German Center panelists, moderator, presenter

The Japan Foundation Center for Global Partnership

The Japan Foundation Center for Global Partnership (CGP) was established in 1991 with the goal of fostering Japan-U.S. cooperation in resolving global issues. CGP promotes dialogue and exchange between all facets of Japanese and U.S. society in order to create a solid partnership based on mutual understanding and joint Japan-U.S. contribution to the global community.



*The Japan Foundation Center for Global Partnership was restructured into the Global Partnerships Department on April 1, 2022.

Developing Activities Based on New Thematic Areas

The Japan Foundation Center for Global Partnership (CGP) used its 30th anniversary as an opportunity to revise its program policies and set three thematic areas for future initiatives it will undertake, namely “Developing an inclusive society,” “Creating a society enriched by science and technology,” and “Building a resilient society.” Along with using our website and various project opportunities to publicize and increase awareness of our thematic areas, we have begun pilot projects and new grant programs that reflect our new program policies.



U.S.-Japan Network for the Future panel discussion



U.S.-Japan 20th anniversary commemorative event



YUKI Maomi

Activities for the 20th Anniversary of the JOI Program

Events were held in both Japan and the U.S. to commemorate the 20th anniversary of the Japan Outreach Initiative (JOI) Program, which shares Japanese culture in the U.S. A commemorative ceremony was held in the U.S. for past and present program participants, and U.S. Senator Bill Hagerty and former astronaut YAMAZAKI Naoko offered congratulatory messages. In Japan, we renovated the logo and website and also broadcast a special corner, hosted by comedian and Michigan-native ATSUGIRI Jason, on the popular radio program “All Night Nippon” for a month. The corner was intended to delve deeper into the attractions of the U.S. South, Midwest and Mountain States, where JOI coordinators are dispatched. A YouTube program was also streamed as a special edition. YUKI Maomi, a multi-talented entertainer who has experience studying abroad in the U.S., was invited as a guest and she spoke on a wide range of topics including personal anecdotes, the importance of experience overseas and its influence on her career. In the second half of the program, people with JOI experience joined in and shared the appeal of the program and the attractiveness of areas of the U.S. that Japanese people are not familiar with through stories of their personal experiences.



JOI Program 20th Anniversary YouTube program banner

Special Co-Organized Session at the Asahi World Forum 2021

We held a special co-organized session on October 17, 2021 at the Asahi World Forum 2021 organized by the Asahi Shimbun. The first session was a dialogue between FUKUOKA Shin-Ichi (Professor, Aoyama Gakuin University) and Michael Sandel (Professor, Harvard University) on post-coronavirus society. The second session, with the topic “Altruism from the Perspectives of Education and Disability Care”, was a panel discussion featuring ITO Asa (Director, Future of Humanity Research Center, Tokyo Institute of Technology), and SHIRAI Tomoko, (Representative Director, Japan Association of New Public). While the first session was a dialogue between a Japanese and an American intellectual from a broad perspective, the second session was a discussion where experienced practitioners drew out issues closer to home.



Source: The Asahi Shimbun

Photo, from right to left: SHIRAI Tomoko (Representative Director, Japan Association of New Public, a non-profit organization), ITO Asa (Director, Future of Humanity Research Center, Tokyo Institute of Technology), FUKUOKA Shin-Ichi (Professor, Aoyama Gakuin University; Visiting Professor, Rockefeller University), SUZUKI Akiko (Deputy Editor-in-Chief, Asahi Shimbun Globe)

The Japan Foundation Asia Center



Through interacting and collaborating in Japanese-language education, arts and culture, sports, grassroots exchange and intellectual exchange, Asia Center conducts and supports collaborative initiatives with its Asian—primarily ASEAN—counterparts. Asia Center aims to develop the sense of kinship and coexistence as neighboring inhabitants of Asia and nurture human resources to become a bridge between Asian countries.

Background of the Establishment of Asia Center

Asia Center was established in April 2014 as a department to implement “WA Project: Toward Interactive Asia through Fusion and Harmony,” a new policy for cultural exchange in Asia announced by the Japanese government at the ASEAN Japan Commemorative Summit Meeting in Tokyo in December 2013. After eight years of implementing and supporting two-way exchange activities between people in Asia, mainly in the ASEAN countries, the Center was reorganized on April 1, 2022, and the NIHONGO Partners Program that the Center implemented continues to run at the NIHONGO Partners Program Department.



From Sanriku International Arts Festival 2021, *Kaminagahime (Princess of Long Tresses): An Asian Tale for the bamboo flute*

NIHONGO Partners Program

The program sends NIHONGO Partners to educational institutions in Asia to serve as partners for Japanese-language teachers and their students by acting as teaching assistants and introducing Japanese culture.

In FY2021, although there were some countries we could not dispatch people to due to COVID-19, we sent 123 persons to middle and high schools and universities in five ASEAN countries as well as China and Taiwan. In addition to building a rapport with Japanese learners and people in the community, NIHONGO Partners introduce people to Japanese culture through extracurricular activities and events.

People of Diverse Backgrounds Communicate Living Japanese

Even if they do not have expert knowledge, persons with special skills or long career histories and a zeal for exchange with Asia can all display their respective strengths and experiences and share the real Japan and the living Japanese that comes from being native speakers.



Deep Bonds Created from Learning from Each Other

NIHONGO Partners do not only share the Japanese language and culture but they also learn about the local language and culture at their destinations. Showing respect to others and interacting on equal footing allows them to deepen their bonds with the local people.



Voices of Participants

NIHONGO Partners (NP)



NP Vietnam 6th term
ABE Shoko

During my stay, I introduced Japanese culture through activities such as origami, cooking and *orizome* (dyeing folded paper), and seeing the students participate with joy was very rewarding for me. I am currently involved in social work, and I get closer to the children and colleagues I meet at work by sharing stories about Vietnam. It serves as a trigger for building positive relationships. In the future, I would like to cooperate with the government to hold an event where people in Vietnam interact with people from my hometown of Noogata City in Fukuoka Prefecture.

Teacher at local school



Prachaksilapakarn
School
**Budsaban
Rodrangsee**
(Thailand)

An NP was dispatched here despite the COVID-19 pandemic, and the children were delighted to be able to speak Japanese with a Japanese person face-to-face. Even students who were less skilled at the language became able to greet enthusiastically in Japanese. Thanks to the suggestions and cooperation of the NP, we were able to interact online with Japanese high school students through Zoom, which I believe was an extremely good experience for my students.

Student at local school



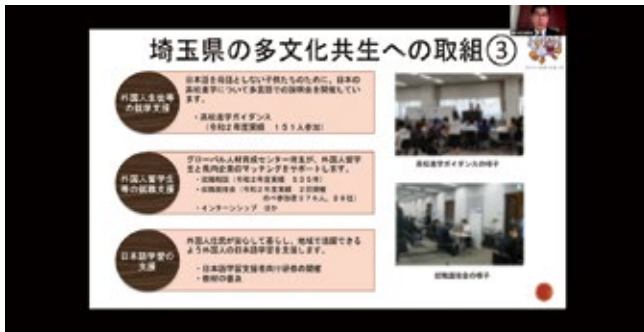
Cimahi State Vocational
High School 1
**Muhammad Azhari
Wirasena**
(Indonesia)

The NP coached me patiently and carefully when I entered a Japanese-language contest, and thanks to that I won third place, which I was thrilled about. Learning Japanese is difficult, but we students shared many interesting moments with the NP and joked with each other. Learning directly from a Japanese person made me more interested in learning about the Japanese language and culture and made classes more fun.

NIHONGO Partners Activities Carried Out Online in FY2021

Initiatives During the Coronavirus Crisis

Together with the Saitama Prefecture International Division, we held the “FY2021 Gathering on Multicultural Coexistence Activities in Saitama” online. Representatives of six organizations which carry out activities concerning multiculturalism such as supporting foreign nationals, and twenty former NIHONGO Partners (NP) participated. Based on specific examples of activities each organization is involved in, they had a lively exchange of opinions on how they could use their experiences as NIHONGO Partners and future issues and possibilities related to activities.



NIHONGO Partners Initiatives During the Coronavirus Crisis

HORIE Ichiro, NP in Indonesia, 16th term

During the coronavirus pandemic, there were many days when schools were closed and classes were held online, so we were rarely able to have face-to-face lessons. It is hard to judge the students' reactions online, so I found ways to make sure everyone could keep up with the lesson, such as by constantly asking them simple questions. Furthermore, although there was a limit on the people who could come to school and so only 10 people could participate in the cultural introduction to calligraphy I held, they all approached the activity with seriousness and had a great time.



Arts and Cultural Exchange Programs

Asia Center promotes exchange programs among the people of Asia in a wide range of fields such as art, films, performing arts, sports, grassroots exchange and intellectual exchange. We created a new Asian culture together through interaction, collaboration and respect for diversity and people's identity.

Film Culture Exchange Projects with the 34th Tokyo International Film Festival

The “Conversation Series at Asia Lounge” with Asian filmmakers, which we held in collaboration with the Tokyo International Film Festival (TIFF), has been popular, being viewed by approximately 40,000 people in more than 48 countries around the world, either live or from the archive, in addition to participants at the venue. Additionally, the “CROSSCUT ASIA” we held online as part of the TIFF was revived as a two-part special feature which we streamed for free as a total of 13 programs.



©2021 TIFF

Online Exchange Dialogue “Asia Center Crosstalk”

To encourage mutual understanding between pacesetters in arts and culture with a view towards developing this activity into a specific post-COVID-19 exchange project, we produced and distributed a total of 10 videos containing online dialogues between such people from Japan and various countries in Southeast Asia. The videos covered a broad range of topics including performance, contemporary dance, sustainable design, crafts, contemporary art, traditional performing arts, festival and community, orchestra and architecture.



Cultural Activities Linking Asia and the Regions of Japan

At the Sanriku International Arts Festival 2021, traditional performing arts and folk entertainment groups from Indonesia, Cambodia and the Sanriku region (northeastern Honshu) collaborated to produce *Kaminagahime* (Princess of Long Tresses): An Asian Tale for the bamboo flute based on a folktale from the Sanriku region. It was broadcast online to the whole world. We also organized activities where various regions in Okinawa connected with Asian countries and regions and held seminars where they discussed common problems as well as activities introducing the traditional arts of each country.



Awards

The Japan Foundation confers the Japan Foundation Awards and the Japan Foundation Prizes for Global Citizenship to individuals and groups who have contributed to deepening mutual understanding between Japan and the world through international cultural exchange and to groups who engage in outstanding community-based international cultural exchange, respectively, in order to nurture further understanding of and participation in international cultural exchanges.

◇◇◇◇◇◇◇◇ The Japan Foundation Awards ◇◇◇◇◇◇◇◇

The Japan Foundation awards are given to individuals and groups who have made and are expected to further make particularly significant contributions to the promotion of international mutual understanding and friendship through academic, artistic or other cultural activities. For the 48th edition of the awards in FY2021, we selected four recipients after the screening of 101 nominations, including those of the 2020 Awards which was canceled due to the COVID-19 pandemic.

Recipients and Reasons for the Awards

Japan KOREEDA Hirokazu (Film Director)

While remaining connected to ordinary people and gently observing the subtleties of their lives, KOREEDA Hirokazu constantly questions the reality of modern Japanese society by depicting neglected children or a surrogate family that makes a living through stealing (*Nobody Knows, Shoplifters*). These films are full of deep insights into humanity and have received high praise across the globe. Through films such as *The Truth* (2019), a Japanese-French collaborative work, and *Broker*, which brought Japan and South Korea together, he has contributed in a major way to promoting mutual understanding internationally.



©FUJII Tamotsu

Japan MIYATA Mayumi (*Shō* (Japanese wind instrument) Performer)

MIYATA Mayumi has performed *gagaku* (ancient Japanese court music) at the National Theatre of Japan since 1979 and showcased the potential of traditional *gagaku* instruments through world premieres of new works by masters of modern music. She has communicated the appeal of the *shō*, a traditional gagaku wind instrument, by performing with orchestras such as the New York Philharmonic and the Deutsches Symphonie-Orchester Berlin and at famous music festivals around the world. She has also performed an opera by German composer Helmut Lachenmann and performed with Czech contemporary dance choreographer Jiří Kylián. Through the *shō*, she has helped to foster international mutual understanding for many years.



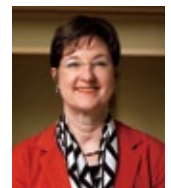
Vietnam Faculty of Japanese Language and Culture, University of Languages and International Studies - Vietnam National University, Hanoi (VNU) / Faculty of Japanese, Foreign Trade University / Department of Japanese Studies, Hanoi University

The popularization of the Japanese language in Vietnam is remarkable. Behind this development are economic and cultural exchanges between Japan and Vietnam supported by the history of Japanese-language education offered by three institutions that have raised excellent human resources, namely, the University of Languages and International Studies - Vietnam National University, Hanoi, Foreign Trade University, and Hanoi University (former College of Foreign Languages). The three universities cooperated to establish the Association of Japanese Linguistics and Education in Vietnam in 2017, the first national organization of its kind in Vietnam, which is currently undertaking various activities.



Germany Irmela Hijiya-Kirschner (Professor, Free University of Berlin)

Hijiya-Kirschner is Europe's leading researcher in Japanese literature, literary critic and translator. She has made outstanding achievements in analyzing and interpreting modern Japanese literature such as MISHIMA Yukio's works and studying unique Japanese literary forms such as autobiographical novels and diaries, greatly contributing to the advancement of the understanding of Japanese culture and society. She has been a professor at the Free University of Berlin for many years where she focuses on training the next generation. She also builds international academic networks and promotes mutual understanding between Japan and Europe, and her efforts have been praised in various circles.



©Pablo Castagnola

◇◇◇◇◇◇◇◇ The Japan Foundation Prizes for Global Citizenship ◇◇◇◇◇◇◇◇

The Japan Foundation Prizes for Global Citizenship are awarded to organizations in Japan that engage in original, forward-thinking initiatives for deepening ties between Japan and other countries, facilitating the exchange of knowledge, ideas and information and encouraging collaborative thinking. In FY2021, the 37th edition of the awards, three organizations were selected as recipients. The award ceremony was held online as it had been in FY2020.

Recipients and Reasons for the Prizes

Friends of El Sistema Japan

El Sistema is an educational program from Venezuela that seeks to address social issues such as poverty through orchestra activities. El Sistema Japan was established in Soma City in Fukushima Prefecture, which was severely damaged by The Great East Japan Earthquake, to give the children there hope for living. Their activities cover all of Japan and they also hold joint concerts with children overseas. They endeavor to help children become more confident through connections with the outside world, while also helping to invigorate local communities.



Mundo de Alegria

Hamamatsu City in Shizuoka Prefecture is home to a large number of second- and third-generation people of Japanese descent from South America, who contribute to the corporations in the area. However their children faced many difficulties in education due to the language barrier. Mundo de Alegria is a school established to provide education for children from kindergarten to high school both in Japanese and in the languages of their country of origin. It also provides them with advice on higher education and job-seeking opportunities to help them decide their futures. It works towards the development of a diverse society by helping to carve out a future for the children.



Door to Asylum Nagoya

Founded in 2012, Door to Asylum Nagoya (DAN) is the only NPO that supports refugees living in the Tokai region. Lawyers and local supporters provide support for refugees who need long-term assistance, offering help with the filing of asylum applications and support for living during the application period. In addition to assistance with legal procedures, they also provide support in a wide range of areas such as distributing provisions through food banks and helping refugees settle in local communities after refugee status is granted. In recent years, they have also focused on raising awareness of refugee issues, which is facilitating an increase in local efforts to support refugees through the collaboration of more diverse players.



Overseas Office Initiatives in 2021

JF has 25 offices in 24 countries, and we carry out various activities in the fields of Arts and Cultural Exchange, Japanese-Language Education and Japanese Studies and Intellectual Exchange based on our country- and region-specific activity policies and according to the conditions in each country or region. The following is a report of the activities each office engaged in.



1

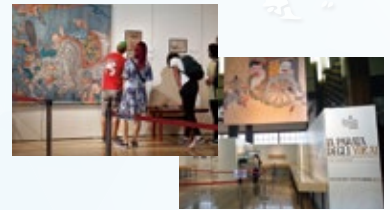
 Italy

The Japan Cultural Institute in Rome

Yokai Parade: Supernatural Monsters from Japan Exhibition

The Japan Cultural Institute in Rome presented a new international traveling exhibition that was produced under the supervision of YUMOTO Koichi, Director Emeritus of the Yumoto Koichi Memorial JAPAN YOKAI MUSEUM. Although preventive measures against COVID-19 were still in place, the exhibition attracted wide media attention, and a large number of visitors of all ages enjoyed the mysterious world of *yokai* (Japanese folkloric imaginary monsters) which evolved over time. To make the exhibition more accessible from other parts of Italy, the Institute produced an introductory video in Italian with Mr. YUMOTO's explanation, available on the Institute's YouTube channel.

*<https://www.youtube.com/watch?v=uiSOILWAeHQ&t=1s>



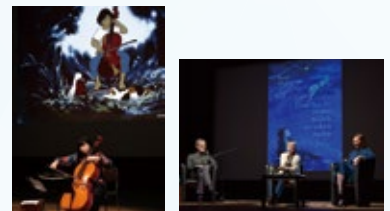
2

 Germany

The Japan Cultural Institute in Cologne

MIYAZAWA Kenji Month

As part of the activities marking 160 years of Japanese-German Friendship, twelve multidisciplinary events, including in the fields of Arts and Culture, Japanese-Language Education and Japanese Studies, were held in close proximity in March under the title of "MIYAZAWA Kenji Month" introducing the charm of the world of MIYAZAWA's literature in Germany where it is not yet well known. The events included readings, cello concerts, Japanese Studies lectures, workshops and translation seminars about original onomatopoeia, and film screenings based on MIYAZAWA's works such as *Gauche the Cellist*, *Yamanashi* and *Night on the Galactic Railroad*.



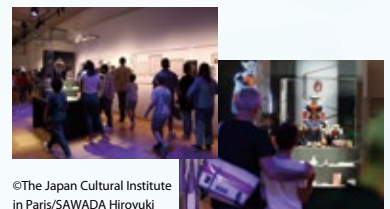
3

 France

The Japan Cultural Institute in Paris

Grendizer Retrospective Exhibition

UFO Robo Grendizer, a TV anime based on a work by NAGAI Go, was broadcast in France in the late 1970s under the name *Goldorak* and became exceptionally popular. The *Goldorak-XperienZ: 1975-2021 Retrospective* exhibition organized in autumn 2021 featured exhibits of the production process and figurines. It was packed with people from the broadcast generation with their children and the event was so popular that long lines formed on the weekends before the venue opened, with many people visiting who were normally not familiar with Japanese culture.



©The Japan Cultural Institute in Paris/SAWADA Hiroyuki

4

 South Korea

The Japan Foundation, Seoul

Online Kokeshi Painting Workshop

As a planned event related to the *NINGYO: Art and Beauty of Japanese Dolls* international traveling exhibition, we held a *kokeshi* (Japanese wooden doll) painting workshop co-organized with Miyagi Prefecture where we connected a *kokeshi* craftsman in Miyagi with the venue in South Korea over the internet. Many of the participants expressed the desire to visit the actual workshop once the coronavirus crisis was over.

It was a meaningful opportunity that deepened understanding of Japanese doll culture and craftsmanship culture through a cultural exchange at the grassroots level while also increasing interest in visiting Japan.



5

China

The Japan
Foundation,
Beijing

FY2021 National Secondary Education Japanese-Language Teacher's Conference

Together with the People's Education Press, an affiliate of the Ministry of Education in China, we organized an online training event for Japanese-language teachers at the secondary level school in China. To cope with needs in the field as a result of a rapid increase in the number of students selecting Japanese in the National College Entrance Examination in China (*Gaokao*), the latest trends in education policies were shared, information about new teaching materials and activities was exchanged, and teachers were also able to network with each other. 1,769 persons completed the training. There were about 7,000 viewers of the stream, and the videos were accessed over 40,000 times.



6

Indonesia

The Japan
Foundation,
Jakarta

Online Illustration Class

In collaboration with Wacom Indonesia, we invited illustrator and YouTuber SAITO Naoki to give a lecture on digital illustration over YouTube Live. Mr. SAITO held an illustration correction class using one artwork selected from over 400 entries submitted by the Indonesian public. Following the lecture, a Q&A session was held with more than 1,600 live viewers.



7

Thailand

The Japan
Foundation,
Bangkok

Leader Japanese-Language Teacher Training in Secondary Education

We organized training in Bangkok to kick off the "Leader Japanese-Language Teacher Training Project," a project co-hosted with Thailand's Ministry of Education, and 14 Thai Japanese-language teachers from junior and senior high schools around Thailand participated. For the next two years, they will participate in a program intended to nurture them into leader teachers. Due to the effects of the spread of COVID-19, opportunities for teachers to meet directly had greatly reduced, so the real-life discussions were very lively and generated many attractive teaching plans.



8

Philippines

The Japan
Foundation,
Manila

SULONG (Moving Forward)

We address themes that respect diversity through a variety of activities. The Philippines is said to be a country with a society that has historically accepted many different cultures and is open to LGBTQ and persons with disabilities. *SULONG (Moving Forward)* is a short film planned and produced by the Japan Foundation, Manila, about three Filipino athletes who participated in the Tokyo 2020 Paralympics. Through the legacy of this competition, we are sending a message encouraging the creation of an inclusive society via the visuals of the athletes overcoming disability and succeeding.



9

Malaysia

The Japan
Foundation,
Kuala Lumpur

The Look East Policy 40th Anniversary Event: Min'yo - Music Concert of Japanese Folk Songs

In 2022, the Malaysian Government's Look East Policy, which has contributed to strengthening bilateral ties between Malaysia and Japan, marked its 40th year. As the opening event to celebrate the anniversary year, in March the Japan Foundation, Kuala Lumpur, invited KUMAGAI Daisuke (percussionist) to serve as musical director and held a concert of *Min'yo*, Japanese folk songs, arranged in a modern style with Alena Murang, a player of a Malaysian folk music instrument known as Sape', as the guest musician. It was the first concert in Malaysia with performers invited from overseas since the COVID-19 pandemic, so it attracted a lot of attention and was well-received by the audience.



10

Myanmar

The Japan
Foundation,
Yangon

Tanabata Event Wishing for Peace for the People of Myanmar

Since the political turmoil in Myanmar, the whole country has been in a state of unrest, and for a while it was impossible for us to hold events even online. In those circumstances, to coincide with the *Tanabata* festival in Japan, we had people in Myanmar write their thoughts and wishes on *tanzaku* (rectangular strips of paper), which were hung on bamboo, and we released a video on YouTube showing a management specialist who had returned to Japan after evacuation offering the bamboo at a shrine in Japan. We also received a strong response when we held an online workshop introducing the story of *Tanabata* and making origami decorations for *Tanabata*.



11

India

The Japan
Foundation,
New Delhi

Thinking about Life and Peace through Online Kamishibai

An online storytelling event of *kamishibai*, a storytelling drama of *Small Voices (Chitchai Koe)* was organized by the Japan Foundation New Delhi, together with the Bookaroo Trust on August 6th. American-born poet Arthur Binard created the *kamishibai*, based on *Genbaku no zu* (The Hiroshima Panels) pictures drawn by MARUKI Toshi and Iri, which depict the aftermath of the atomic bombing of Hiroshima. At the event, *kamishibai* was performed with a Hindi translation for about 700 children participating from various regions of India, followed by Mr. Binard's speech about the tragedy in Hiroshima and his thoughts behind making this work. The program provided the children with an opportunity to think about life, environment and peace.



12

Australia

The Japan
Foundation,
Sydney**Japan-Australia Independent Animation Exhibition**

The *Continuum* exhibition was held between February and July 2022. Curated by YANO Honami and Deborah Szapiro and supervised by YAMAMURA Koji, the exhibition showcased animated works from 15 independent creators in Japan and Australia. The delicate, complex and beautiful stories from both countries challenged observers to think about the importance of regaining a sense of connection between fellow humans and between humans and the world in a highly divided modern era.



13

Canada

The Japan
Foundation,
Toronto**Introducing OverDrive, the Digital Library Service**

In order to maintain safe and continuous library services, we launched a digital library service (OverDrive, Inc.) in 2021. By providing an online environment for accessing Japan-related e-books and audiobooks, people across Canada can now access information about Japan. In FY2022, we expanded the digital library to the U.S., with JF's three North American offices (New York, Los Angeles, and Toronto) now jointly operating the library.

* <https://jf.overdrive.com/>



14

U.S.

The Japan
Foundation,
New York**50th and 20th Anniversary Events in the U.S.**

To mark the 50th anniversary of the establishment of the Japan Foundation, JFNY organized a variety of events at the Association for Asian Studies (AAS) Annual Conference in Hawaii in March 2022, including a Japanese Studies symposium, a roundtable, and a reception. Japanese Studies scholars from across the U.S. and around the world attended. In addition, to commemorate the 20th anniversary of the Japan Outreach Initiative (JOI) Program, we held a symposium in Tennessee in October 2021 where we reviewed past results and future prospects with coordinators and hosts from across the country.



15

U.S.

The Japan
Foundation,
Los Angeles**Over 500 Children at Elementary Schools in San Diego County Start Learning Japanese**

The first Japanese-language program ever in the city of Poway, San Diego County, was launched at two of its elementary schools simultaneously, and a little over 500 students at both schools have since started learning Japanese. The Japan Foundation, Los Angeles, provided comprehensive support through a financial grant, as well as valuable information from the conceptual stages to actual implementation in collaboration with the local school district, sister-city associations and the diplomatic mission. A Japanese-language program will be established in the school district's junior high schools as well starting in FY2022, thereby creating a long-term, continuous Japanese-language learning environment.



16

Mexico

The Japan
Foundation,
Mexico**Special Japan Event to Celebrate 200 Years of Mexico's Independence**

On the occasion of Mexico's 200th anniversary of independence, Japan was a specially invited country in the state of Aguascalientes, where we held various kinds of Japanese culture events. Despite the restrictions put in place because of COVID-19, the Japan Foundation, Mexico, was able to organize a variety of face-to-face activities such as a *kamishibai* performance depicting relations between Japan and Mexico, Japanese-language mini-lessons, a Japanese music workshop, film screenings and PR booth exhibits. The venue was bustling day after day at the first large-scale event in a long time, showing the unique appeal of in-person cultural exchanges.



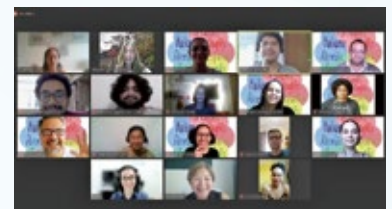
17

Brazil

The Japan
Foundation,
São Paulo**Irodori Portuguese Version Created × Languages Without Borders**

To accompany the release of the Portuguese version of *Irodori: Japanese for Life in Japan* (Starter (A1), Elementary 1, Elementary 2 (A2)), we made it available for free on the internet from March 2022. It was immediately adopted for use by the Languages Without Borders Program, a Japanese-language course launched in 2016 and implemented at five federal universities in Brazil and met a very warm welcome from the almost 260 students. Apart from Brazil, it is also being used in Japanese-language education for Brazilians living in Japan and in other Portuguese-speaking countries such as Angola.

* <https://fjsp.org.br/irodori/>

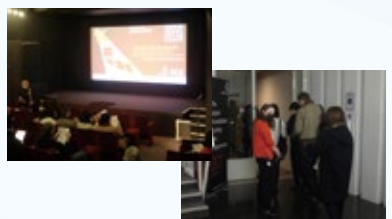


18

UK

The Japan
Foundation,
London**The Largest Japanese Touring Film Programme in the UK Returns to the Silver Screen**

The Japan Foundation Touring Film Programme returned to the silver screen in 27 cities in the UK. The programme showed excellent and much talked-about films such as *Kiba: The Fangs of Fiction* and *Life: Untitled*. Many members of the audience were thrilled at the sights and sounds of the big screen for the first time in a long while. The COVID-19 pandemic made it difficult for guests to visit the UK, but we played special messages from directors before the films. We also hosted an online conversation between WAJIMA Kotaro, director of *The Lone Ume Tree*, and a British journalist, which provided a platform for considering the universal issue of autism through the medium of film.



19

 Spain

The Japan
Foundation,
Madrid

Boom En España Japanese Film

“There is a long queue all the way to Calle de Alcalá...” That was the scene when the *Director NARUSE Mikio Special Feature* organized in the major cities of Spain was held in Madrid. We directly experienced the excitement for Japanese film in Spain. There were a little over 20,000 attendees at film events organized by the Japan Foundation, Madrid this fiscal year. That is a fivefold increase compared to ten years ago. Additionally, excitement among the Spanish people at the Sitges International Fantastic Film Festival of Catalonia reached a fever-pitch when Director HOSODA Mamoru, winner of the Grand Honorary Award, addressed the packed movie theater.



20

 Hungary

The Japan
Foundation,
Budapest

Cinema Kabuki Screenings

Cinema Kabuki screenings were held for four days in March 2022. To familiarize the audience with the traditional Japanese art of kabuki and help them to better appreciate its depths, we also had an expert in kabuki deliver a lecture before the screenings. Opportunities to watch kabuki performances are almost non-existent in Hungary, so enjoying the show on the large screen of the movie theater gave the large number of visitors (approximately 730 people) a chance to deepen their interest in Japan.



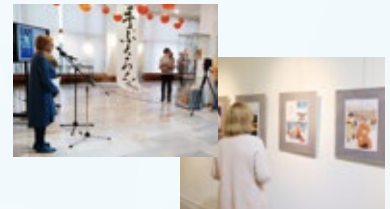
21

 Russia

The Japanese
Culture Department
“Japan Foundation”
of the All-Russia
State Library for
Foreign Literature

The *Buying Mittens* Picture Book Cover Exhibition from Russia

During the long period of self-imposed curfews, we began distributing videos of readings of Japanese picture books with Russian-language subtitles. A picture book cover competition based on *Buying Mittens* (*Tebukuro wo kai ni*), one of the books distributed, received a strong response. To the joy of the Japanese and Russian judges, there were 593 entries. The exhibition of prize-winning works that was held in Moscow in September 2021 was also held at the Nakanohigashi Library in Japan in February the following year, meaning that the work had returned to its hometown of Nakano (Tokyo), the place where author NIIMI Nankichi wrote *Buying Mittens*.



22

 Egypt

The Japan
Foundation,
Cairo

Japanese-Language Education Symposium for an Online Age

The Japan Foundation, Cairo, organized the Japanese Language Education Symposium in the Middle East & North Africa JLEMENA 2022: From “Teaching” to “Learning”—Autonomy, Dialogue and Collaboration—. It was held in a new format for an online age, consisting of sessions made up mainly of pre-recorded video presentations, as well as a mix of other sessions such as keynote speeches, workshops, and question and answer sessions and discussions based on the video presentations. Over 400 people registered for the whole program, and it contributed to the sharing of information, external dissemination, an improvement in teaching skills and the building of networks concerning Japanese-language education.



23

 Vietnam

The Japan
Foundation
Center for Cultural
Exchange in
Vietnam

First Ever Elementary and Secondary School Japanese-Language Teacher's Forum in Vietnam

In response to the trend towards spreading Japanese-language education at elementary and secondary education institutions and organizing their curriculums in Vietnam, we held an online Japanese-language teacher's forum co-hosted by the Interdisciplinary Institute for Culture, Language and Education Fostering, a local organization. The aim of the forum was to allow Vietnamese Japanese-language teachers to share information, enhance their knowledge and network with each other. 107 people participated, including elementary and secondary education Japanese-language teachers and others involved in Japanese-language education. We shared the latest information and exchanged opinions on topics such as the state of Japanese-language education and Vietnam's foreign language policy with each other.



24

 Cambodia

Phnom Penh
Liaison Office

Manga Exhibition in Asian Literature Project

To raise awareness of the importance of a reading culture among the youth of Cambodia, the Phnom Penh Liaison Office organized a Japanese manga exhibition and a stage event about anime cosplay and related topics. In addition to a display of manga on giant panels, other events such as a cosplay show on stage, a talk event by a Cambodian author and a mini-concert by a famous singer were held in the special event space at a shopping mall in the center of Phnom Penh over a five-day period, with a total of 35,000 visitors.



25

 Laos

Vientiane
Liaison Office

DigiCon6 ASIA-2nd Laos Contest

In August 2021, the Japan Foundation, Vientiane Liaison Office, organized the 2nd Laos Regional Contest ahead of the DigiCon6 ASIA Awards, a film festival organized by TBS Holdings for Asian countries and regions. We began accepting applications from April 2021 and received a total of eleven submissions, the majority of which were animated although there were some live-action entries. The judges met in August to select the Gold, Silver and Next Generation Awards, and the award-winning works were entered into the Asia's SUPREME SHORT MOVIE CONTEST in Tokyo (November 2021) to compete for various awards with works from other countries.



Summary of Arts and Cultural Exchange Programs

1 Performances/International Creations in Performing Arts

- Seinendan and Pascal RAMBERT (France) *Kotatsu*
- Saitama Arts Theater and Christopher GREEN (U.K.) *The Digital Home*
- Setagaya Public Theatre and Rapahëlle BOITEL (France) *Fierce 5*
- chelfitsch & Dai Fujikura with Klangforum Wien (Austria) *Work-In-Progress for Music Theatre Production*
- Shizuoka Performing Arts Center (SPAC) and T2G – Théâtre de Gennevilliers Centre Dramatique National (France) SPAC AUTUMN – SPRING 2021-2022 #2 *The Cherry Orchard*
- SCOT (Suzuki Company of Toga) and Restu Kusumaningrum (Indonesia) *Electra*
- Company Derashinera and LEE Ren Xin (Malaysia), LIU Juichu (Taiwan) *TOGE*
- S.C.ALLIANCE Inc. and Shen Kyomei RIBEIRO, Gabriel LEVY, Ari COLARES (Brazil) *Sky Bridge*

2 Japan Festival Support Program

- National Cherry Blossom Festival Opening Ceremony / Performances by OHNO Keisho & YUTA Toshihiro, MINYO CRUSADERS, and Samurai Artist KAMUI (U.S.)
- 60th Anniversary of the Establishment of Diplomatic Relations Between Japan and the Republic of Senegal / Broadcast of a performance by the taiko drum group Ondekoza on television (Senegal)
- Nihongo Fiesta Online 2022 / Streaming of a special performance by Yamato: the Drummers of Japan(Philippines)
- Celebrating 130 Years of Japan-Turkey Relations / Online broadcast of Hiroshima Kagura (Turkey)

3 Grant Program for Dispatching Artists and Cultural Specialists

Cancelled due to the impact of the spread of COVID-19

4 Performing Arts Japan (PAJ)

- Implemented in 1 country, 4 cities and 3 online

5 International Exhibition Participation

- The Japan Pavilion at the 17th International Architecture Exhibition - La Biennale di Venezia, *Co-ownership of Action: Trajectories of Elements*

6 Art Exhibitions

- *Between Collectivism and Individualism - Japanese Avant-Garde of the 1950s and 60s* (Poland)
- *Rimpa feat. Manga* (Germany)

7 Japan Foundation Traveling Exhibitions

- 16 sets, traveling 56 cities in 32 countries/regions

8 Exhibition Abroad Support Program

- 25 grants for exhibitions in 23 cities in 16 countries

9 U.S. and European Museum Infrastructure Support Program

- 4 grants provided in 4 cities in 2 countries

10 Support Program for Translation and Publication on Japan

- 30 projects in 21 countries/regions

11 Networking of Cultural Specialists

Cancelled due to the impact of the spread of COVID-19

12 Sharing Information

- Japanese Literature in Translation Search
- List of recommended books and children's books for translations *Worth Sharing, Lifelong Favorites* (website, brochure)
- Performing Arts Network Japan (PANJ) (website)
- La Biennale di Venezia
- Translators' Roundtable Series *More than Worth Sharing*
- Japanese literature translator interview video series *Translator Spotlight*
- Correspondence series between modern authors *Writing to Meet You: Letters for Secluded Times* (website, magazine)
- STAGE BEYOND BORDERS (online distribution of stage performances project)
- The Japan Foundation Traveling Exhibitions video series *Japanese Yokai, The Superlative Artistry of Japan, The Japanese Spirit of Gifting, NINGYO, Built Environment, Netsuke, YAKISHIME, I Love Sushi*
- Video series *Invitation to Explore Japan's Museums* (introduction to museums around Japan)
- Video series *Manga Culture in Japan*
- Video series *Beyond the Lines* (introduction to contemporary Japanese artists)
- Project for revitalizing Japanese gardens in the U.S. *130 Years of Japanese Gardens* (webinar series), *Adaptability and Resilience — Sustainability in Japanese Gardens* (hybrid symposium)
- Japanese-French high school student exchange app *Nakamitié*
- Translation and publication of plays (France, Spain, Russia)
- Japanese Film Database (JFDB)

13 Japanese Film Screenings

- Japanese film festivals and screenings held in 43 countries/regions
- Grants for 16 Japanese film screening projects held in 13 countries/regions
- Japanese Film Festival Online
- Japanese Film Website JFF+

14 Introducing Japanese Television Programs

- 489 television programs broadcast to 76 countries/regions

15 Long-Term Exchange Program for Chinese High School Students

Cancelled due to the impact of the spread of COVID-19

16 Program for Dialogue and Collaboration between Japanese and Chinese High School Students

- Online exchange programs between Japanese and Chinese high schools: 14 programs
- Online training for Japanese participants: 2 programs

17 Centers for "Face-to-Face Exchanges" in China

- Centers for "Face-to-Face Exchanges" organized and held events in 17 cities in China (A total of 23,499 visitors)
- Online Japanese culture seminars: 6 seminars
- Conference for staff in charge of practical business at Centers for "Face-to-Face Exchanges" (online)

18 Network Strengthening Programs

- University Student Exchange Program (online): 11 programs
- "RLEAD ASIA 2021" (online)
- Training for representative students from Centers for "Face-to-Face Exchanges" (online)
- Operation of "Heart to Heart" website (Japanese and Chinese)

Summary of Japanese-Language Education Overseas Programs

1 Promoting the JF Standard for Japanese-Language Education

- JF Standard for Japanese-Language Education website accessed approximately 266,000 times in 12 months
- 'Minna no Can-do' Website accessed approximately 297,000 times in 12 months
- Marugoto: Japanese Language and Culture published overseas edition in 2 levels in 2 countries
- Irodori: Japanese for Life in Japan enhanced contents with word lists and PDFs with audio files, etc.
- Broadcast and distributed ひきだすにほんご Activate Your Japanese! (co-produced with NHK Educational)
- Broadcast and distributed NHK WORLD JAPAN's Easy Japanese (supervisory role)
- Providing information at various online seminars and training sessions in Japan and overseas

2 JF Language Course

- Language courses held in 28 cities in 26 countries/regions

3 Online Educational Tools

- 1 Approximately 292,000 registered users for JF Japanese e-Learning Minato
- 2 Approximately 54,000 registered users for Irodori Japanese Online Course
- 3 'Minna no Kyozaï' Website accessed approximately 1.44 million times in 12 months
- 4 MARUGOTO website accessed approximately 5.72 million times in 12 months
- 5 MARUGOTO Plus websites accessed approximately 9.85 million times in 12 months
- 6 Irodori: Japanese for Life in Japan website accessed approximately 2.19 million times in 12 months
- 7 Hirogaru, get more of Japan and Japanese website accessed approximately 750,000 times in 12 months
- 8 Japanese in Anime & Manga website accessed approximately 1.17 million times in 12 months
- 9 NIHONGO へ website accessed approximately 1.03 million times in 12 months
- 10 Nihongo de Care-Navi website accessed approximately 650,000 times in 12 months
- 11 "Erin's Challenge! I Can Speak Japanese." Contents Library website accessed approximately 1.99 million times in 12 months
- 12 Challenge with Erin - Japanese Language Test - (beginner-level learning app) downloaded approximately 10,000 times in 12 months
- 13 HIRAGANA Memory Hint (character learning app) downloaded approximately 100,000 times in 12 months
- 14 KATAKANA Memory Hint (character learning app) downloaded approximately 50,000 times in 12 months
- 15 KANJI Memory Hint 1, 2 & 3 (character learning app) downloaded approximately 60,000 times in 12 months

4 Tests for Assessing Japanese-Language Proficiency

1 Japanese-Language Proficiency Test (JLPT)

1st Test (July 4):

Overseas: Held in 93 cities in 25 countries/regions, with 142,289 examinees.
Japan*: Held in 47 prefectures, with 193,626 examinees.

2nd Test (December 5):

Overseas: Held in 175 cities in 68 countries/regions, with 173,365 examinees.
Japan*: Held in 47 prefectures, with 175,627 examinees.

*In Japan, the test is run by Japan Educational Exchanges and Services (JEES).

2 The Japan Foundation Test for Basic Japanese (JFT-Basic)

6 times a year, 16 cities in 9 overseas countries, and 47 prefectures in Japan with 30,596 examinees

5 Surveys and Provision of Information Relating to Japanese-Language Projects

- The Japan Foundation Japanese-Language Education Bulletin issued annually
- Nihongo Kyoiku Tsushin (updated monthly) accessed approximately 500,000 times in 12 months
- Operation of website Nihongo Kyōiku Kuni-Chiikibetsu Jōhō (Information on Japanese-language education by country/region; available in Japanese)

6 Japanese-Language Education Overseas Programs of Overseas Offices and the JF Nihongo Network ("Sakura Network")

- Projects by Japan Foundation's overseas offices and Japan Center for Human Resources Development (Japan Center) branches: 260 projects in 28 countries
- JF Nihongo Network ("Sakura Network"): 357 organizations in 102 countries/regions
Support for overseas Japanese-language education institutions (grants): 652 grants in 95 countries/regions

7 Dispatch of Japanese-Language Specialists

Dispatch of Japanese-Language Specialists and other personnel

- Japanese-Language Senior Specialists: 29 posts in 21 countries
- Japanese-Language Specialists: 78 posts in 39 countries
- Japanese-Language Assistants: 12 posts in 12 countries
- Japanese Language Education Assistant Program (J-LEAP): 7 posts in 1 country

8 Training Programs for Overseas Teachers

Training Programs for Teachers of the Japanese Language

- Basic (online): 32 people in 25 countries
(Basic (Autumn): 31 people in 25 countries)
(Basic (Winter): 21 people in 18 countries)
- Teaching Methods (online): 20 people in 15 countries
- Online Training Program for Secondary School Teachers of the Japanese-Language from Republic of Korea: 18 people in 1 country
- Online Training Program for Secondary School Teachers of the Japanese-Language from People's Republic of China: 7 people in 1 country
- Specific Theme: 96 people from 17 countries/regions
(JF Standard for Japanese-Language Education (online): 21 people from 11 countries
Japanese-Language Education and Culture (online): 25 people from 13 countries
Teaching Reading Comprehension (online): 26 people from 12 countries
Rethinking of Teaching Japanese Grammar (online): 14 people from 7 countries
Teaching Business Japanese: Understanding Learner's Needs (online): 12 people from 9 countries)
- Japanese-Language (online): 27 people from 14 countries
- Japanese Teaching Methods Program for Teachers of Specified Skilled Workers Candidates: 61 people from 6 countries
Session 1 (online): 16 people from 5 countries
Session 2 (online): 15 people from 4 countries
Session 3: 13 people from 4 countries
Session 4 (online): 17 people in 6 countries
- The Online Guest Teacher Program for teachers from Queensland, Australia (online): 14 people from 1 country
- Irodori Japanese Online Course utilization seminar 1 (online): 108 people from 18 countries
- Irodori Japanese Online Course utilization seminar 2 (online): 142 people from 26 countries
- Introductory seminar on video production for Japanese-language teachers (Applications) (online): 64 people from 18 countries

9 Training Programs for Overseas Learners

Japanese-Language Program for Specialists

- In FY2020 (continued from FY2020 to FY2021)
Foreign service officers and public officials (online): 28 people from 28 countries
- In FY2021
Foreign service officers and public officials (online): 33 people from 29 countries
Specialists in Cultural and Academic Fields / 2-month course (online): 10 people from 6 countries

Japanese-Language Programs for Overseas Students

- Lee Soo-Hyun Youth Exchange Program (online): 14 people from 1 country

10 Japanese-Language Education Training Program for Candidates for Nurses and Certificated Care Workers Related EPAs

6-month Preparatory Japanese-Language Training Programs for Prospective Nurses and Certificated Care Workers implemented in Indonesia and the Philippines

- EPA-related training: 4 programs in 2 countries
FY2020(continued from FY2020 to FY2021): 274 from Indonesia / 227 from the Philippines
FY2021 (new): 302 from Indonesia / 250 from the Philippines

11 Commissioned Training Programs

Training for Teachers

Cancelled due to the impact of the spread of COVID-19

Training for Learners

- Japanese-Language Program for Indonesian University Students (Commissioned by Osaka Gas Foundation of International Cultural Exchange) (online): 2 university students from 1 country
- Japanese-Language Program for Students of Griffith University (online): 10 people from 1 country

12 Other Training Programs

- Japanese-Language Program for JET Participants in Osaka
Session 1 (online): 39 people from 4 countries
Session 2 (online): 26 people from 7 countries
Session 3: 21 people from 5 countries
- JET Online Training Program for Teaching Japanese as a Foreign Language
16 people from 9 countries

13 Libraries of Japanese-Language Institutes

- The Library of the Japanese-Language Institute, Urawa received 1,758 visitors (reserved books rental service was available during the temporary closure)
- The Library of the Japanese-Language Institute, Kansai received 4,332 visitors

1 Support for Japanese Studies Organizations

(1) Support Program for Development of Infrastructure for Japanese Studies

Asia

Korea: Hallym University; Korea University; Institute for Japanese Studies, Seoul National University; Department of Asian Languages and Civilizations, Seoul National University

China: Zhejiang Gongshang University; Nankai University; Fudan University

Taiwan: Chengchi University

Indonesia: University of Indonesia

Vietnam: University of Social Sciences and Humanities, VNU-Hanoi

India: School of International Studies, Jawaharlal Nehru University; School of Language, Literature and Culture Studies, Jawaharlal Nehru University, University of Delhi

Bangladesh: University of Dhaka

Americas

U.S.: The University of Arizona; University of California, Irvine; University of California, Santa Barbara; Case Western Reserve University; Swarthmore College; University of Texas at Austin; Purdue University; University of Pennsylvania; The University of Utah

Europe

U.K.: University of East Anglia

Russia: Far Eastern Federal University

Middle East and Africa

Israel: Hebrew University of Jerusalem

Egypt: Cairo University

(2) Japanese Studies project grants

- 19 projects in 17 countries/regions

2 The Beijing Center for Japanese Studies

(1) Invitation programs (including online)

- Beijing Foreign Studies University
 - 14 Masters students of the 35th session
 - 3 PhD fellows of the 20th and 21st sessions
- Peking University
 - 7 PhD students of the 16th session for special online program

(2) Dispatch programs (online)

- 6 people to Beijing Foreign Studies University
- 10 people to Peking University

(3) Other programs

- Beijing Foreign Studies University
 - 1 online workshop for Masters students

3 Japanese Studies Fellowship

- 156 fellows (including those who continued their stay from the previous fiscal year)

4 Enhancement of Japanese Studies Network

(1) Hosted/Co-hosted programs

- The 5th International Conference of the East Asian Consortium of Japanese Studies
- The 3rd Collaborative Research Workshop for Aspiring Scholars in Japanese Studies
- Production of Japanese Studies films

(2) Grant programs: 21 projects in 17 countries

5 Enhancement of Intellectual Exchanges

(1) Hosted/Co-hosted programs

- Japan-China Intellectual Exchange Program: 5 Online Dialogues
- Japanese-German Panel Discussion *The Future of Communication and Us*

(2) Grants programs for Intellectual Exchange Conferences: 21 projects

6 Grant Program for Social Science, Research and Education on Contemporary Japan projects

Asia and Oceania

- Australian National University

Americas

- Yale University
- Johns Hopkins University
- Harvard University
- Indiana University

Europe

- King's College London
- Vrije Universiteit Brussel
- European University Institute

7 Intellectual and Grassroots Exchanges with the United States

(1) Hosted programs

- Abe Fellowship: "Global Forum" and "Retreat" 1 time each
- Japan Outreach Initiative (JOI) Program: 13 JOI coordinators (8 new and 5 continuing)

(2) Grant programs

- Special Initiatives: 4 (2 new and 2 continuing)
- Regular Grants: 7 (0 new and 7 continuing)
- CGP New York (CGPNY)
 - Urgent support for Japan-America societies and Japanese gardens during COVID-19: 29 applications and 23 accepted
 - Support for Japan-America Grassroots outreach personnel: 8 applications and 7 accepted
 - CGPNY discretionary grants: 12 (2 grassroots exchange, 1 intellectual exchange, 9 education)

Summary of the Japan Foundation Asia Center Programs

*Includes projects conducted as part of the "Project for the Dispatch of Supporters who introduce Japanese language and cultures," which was funded by the FY2019 supplementary budget (No. 1).

1 NIHONGO Partners Program

Indonesia: 30 persons

Cambodia: 1 person

Thailand: 45 persons

China: 2 persons

Taiwan: 13 persons

Vietnam: 14 persons

Malaysia: 18 persons

Total: 123 persons

- Online Presentation by Former NIHONGO Partners
- Gathering on Multicultural Coexistence Activities in Saitama (online event co-organized with Saitama Prefecture)

2 Grassroots Exchange Programs

- Grant programs: 20 grants

3 Cultural Collaboration Programs

- Film Culture Exchange Projects with the 34th Tokyo International Film Festival ("Conversation Series at Asia Lounge", etc.)
- Omnibus Film Production Series "Asian Three-Fold Mirror 2016: Reflections" and "Asian Three-Fold Mirror 2018: Journey" (distributed online)
- "CROSSCUT ASIA Delicious! Online Film Festival" (distributed online)
- Online Exchange Dialogue "Asia Center Crosstalk: Cultural Journeys toward Post-COVID-19" (distributed online)
- Recorded footage of "Setan Jawa - A Silent Film with a Live 3D Sound Concert" (distributed online)
- JFA Collaborative Football Project
Dispatch of Long-term Coaches: Brunei, Cambodia, Philippines, Thailand, Vietnam
- Judo Exchange Program "JAPAN-ASEAN JITA-KYOEI PROJECT"
Kodokan Judo Technique Video Series
Kodokan International Training Seminar (online)
Produced videos encouraging the popularization of judo
Created teaching materials
Published project report
- Sanriku International Arts Festival 2021
- DocCross Asia
- Online Asia Center TERA KOYA #1 (No. 7 in total) "Delivering Japanese Films Around Asia—The Potential of the Japanese Film Festival (JFF)"
- Exchange with Southeast Asian Muslim Youth: Talk with Muslims (TAMU) "Magical Islamism": An Author Talks about Religion and Society in Contemporary Indonesia (streamed as No. 8 in total of the "Asia Center TERA KOYA" series)
- Asian Literature Project "YOMU"
- JF sponsored session, "Cultural Exchange in the COVID-19 Era" at the 26th International Conference on the Future of Asia (organizer: Nikkei Inc.)
- HANDS! -Hope and Dreams Project- (published a report)
- Multiculturalism × Asia Project—Spinning hearts: Tracing Asia through lullabies and puppet theater
- UMITOMACHI My neighbour's port
- Okinawa × Asia—Online exchange about traditional performing arts
- Okinawa × Asia Exchange Project—Connecting Islands, Discussing Life and Culture
- Multicultural town planning project—Artists in Fujimi
- Multiculturalism Project 2021: Connecting Asia Through Bodies—Folk performing arts online workshop

- Grant programs: 19 grants

Financial Cooperation from the Private Sector

The Japan Foundation's international cultural exchange programs are made possible thanks to generous financial contributions from a wide range of private-sector entities, including companies, organizations and individuals. The donation system and other aspects of private funding for FY2021 are explained below, along with a list of donors and programs supported with their funding.

1. Types of Financial Cooperation

(1) General Donations

General donations are used to fund the Japan Foundation's international cultural exchange programs.

① General Donations System

General donations are received from companies, organizations and individuals. The amount and timing of the donation are up to the donor. Donors in FY2021 are listed on the following page under Donors for Program Expenses and Private Endowment Providers.

- Donations for program expenses

These donations fund the Japan Foundation's programs conducted in the same fiscal year as the donation. The donor can request the donation to be used for a specific project during the fiscal year.

- Donations for operational funds (private endowments)

These donations are deposited to the Japan Foundation's funds, and the accrued interest is used for program expenses in perpetuity. The FY2021 implementation of special programs established and named at the request of the benefactors in the past is outlined on the next page under Programs Supported by Private Endowments..

② Corporate Membership System (Supporting members)

Fixed donations are received from companies and organizations as annual membership dues. They are used to fund programs conducted in the same fiscal year. Donations are made in units of 100,000 JPY. General Members donate 100,000 JPY to 400,000 JPY, and Special Members donate 500,000 JPY or more annually. Membership benefits include invitations to various events of the Japan Foundation and a copy of The Japan Foundation Annual Report. Corporate members for FY2021 are listed on the next page under Corporate Members.

(2) Designated Donations

Financial contributions from individuals and corporations in Japan to support international cultural exchange programs in Japan and overseas are received by the Japan Foundation as donations to be used as a subsidy for applicable cultural exchange projects. This system makes donors eligible for tax benefits for their donations.

Applicable programs are international cultural exchange activities such as personnel exchanges, overseas Japanese studies and Japanese language education programs, performances, exhibitions and seminars. Designated donations are reviewed by a screening committee of outside experts to decide whether to accept the donation. Programs funded by designated donations in FY2021 are listed on the next page under Programs Supported by Designated Donations.

(3) Other Types of Private Financial Support

Besides donations, the Japan Foundation receives private-sector financial support in various forms such as cooperation funds and grants. Examples of such support in FY2021 are listed on the next page under Primary Examples of Non-Donation Financial Support.

2. Tax Benefits for Donations

The Japan Foundation is a "Designated Public Benefit Organization" in accordance with Article 77 of the Order for Enforcement of the Corporation Tax Act and Article 217 of the Order for Enforcement of the Income Tax Act. This makes Japan-based donations to the Japan Foundation eligible for the following tax benefits.

(1) For Corporations

The total donation amount to Designated Public Benefit Organization or the maximum deductible donation amount to Designated Public Benefit Organization, whichever is smaller, is treated as a loss.

NB 1: If the total donation amount to Designated Public Benefit Organization is larger, the amount not treated as a loss (the amount exceeding the maximum deductible amount of donation to Designated Public Benefit Organizations) is included in the amount of normal donations. The maximum deductible amount of a donation is calculated as follows:

- Donations to Designated Public Benefit Organizations

(Maximum Deductible Donation Amount)

(Amount of capital x Number of months for the period/12 x 0.375% + Amount of income x 6.25%) x 1/2

- Normal donations

(Amount of capital x Number of months for the period/12 x 0.25% + Amount of income x 2.5%) x 1/4

(2) For Individuals

The total donation amount minus 2,000 JPY (up to 40% of the gross income) is deductible from income. Donations of inherited assets are also eligible for beneficial taxation treatment.

3. Donations Received in FY2021

	Number	Amount (JPY)
General donations	39	7,839,000
Supporting members	30	6,450,000
Donations for program expenses	6	376,000
Private endowments	3	1,013,000
Designated donations	12	153,787,216

NB 2: From the designated donations received, 162,950,782 JPY plus the 18,557,532 JPY carried over from FY2020 were given as subsidies to eleven programs (see Programs Supported by Designated Donations on the next page). The remaining 9,393,966 JPY of the designated donations will be provided as subsidies to three programs in FY2022.

NB 3: From the establishment of the Japan Foundation in 1972 to the end of FY2021, the cumulative amount of general donations it has received was approximately 3,095,570,000 JPY and the cumulative amount of designated donations received was approximately 71,821,710,000 JPY.

NB 4: A total of approximately 32,000,000 JPY of non-donations was received from the private sector in FY2021 as financial cooperation (cooperation funds, grants, etc.)

List of Donors, Contributors and Supported Programs in FY2021

Donors for Program Expenses

(Listed in random order. Programs applicable for contributions in parentheses)

- Sun Investment Inc. (Japanese-language speech contest for foreign nationals)
- FJC Inc., YOSHIDA Norihiro and 3 other individuals (General project expenses)

Private Endowment Providers

- MASUI Yoshihiro and 2 other individuals

Programs Supported by Private Endowments (Listed in random order)

(Special programs established and named at the request of the benefactor)

- Takasago Thermal Engineering Japanese Studies Fellowship
The benefactor is Takasago Thermal Engineering Co., Ltd.
- WATANABE Ken Japanese Studies Fellowship
The benefactor is WATANABE Yukinobu, the father of Foreign Ministry worker WATANABE Ken who died in a traffic accident while training in the U.S.

Corporate Members (As of end FY2021, in Japanese syllabary order)

(1) Special Members

- SMBC Nikko Securities Inc.
- Shochiku Co., Ltd.
- Mizuho Bank, Ltd.
- MUFG Bank, Ltd.

(2) General Members

- Asuka Foundation
 - Ikenobo Society of Floral Art
 - Idemitsu Kosan Co., Ltd.
 - NHK International, Inc.
 - Katolec Corp.
 - Kodansha Ltd.
 - Kodokan Judo Institute
 - Komazawa University
 - Urasenke Konnichian Foundation
 - Shiseido Co., Ltd.
 - Shorinji Kempo Organization
 - All Japan Kendo Federation
 - Daiichi Seiwa Jimusho Co., Ltd.
 - Daiwa Securities Co. Ltd.
 - Tokyo Business Service Co., Ltd
 - Motion Picture Producers Association of Japan, Inc.
 - Nippon Origami Association
 - Japan International Cooperation Center
 - Nomura Securities Co., Ltd.
 - Hitachi, Ltd.
 - FUJIFILM Business Innovation Corp.
 - Bonjinsha Inc.
 - Sumitomo Mitsui Banking Corp.
 - Mitsubishi UFJ Morgan Stanley Securities Co., Ltd.
 - Mori Building Co., Ltd.
- and one other corporate member

Programs Supported by Designated Donations

(Country of program implementation in parentheses. Listed in random order)

- Asian University for Women Scholarship Program (Bangladesh)
- CWAJ Cultural Exchange Scholarship Program for Women (Japan and U.S.)
- Mikasanomiya Foundation Fundraising Activities (Turkey)
- United States-Japan Bridging Foundation Fellowship Program (U.S.)
- Tsinghua University Research Center for Japanese Studies (China)
- LSH Asia Scholarship(Japan)
- Balkan Chamber Orchestra 2021 (Japan)
- Music from Japan 47th Anniversary Festival Artist Residence (U.S.)
- The 4th World Festival of Children's Performing Arts in Toyama (Japan)
- The Mahabharata - Chapter of Desire/Chapter of Tempest (Japan)
- International Graduate Students Exchange Programs of Nagoya Ryugakusei Net (Japan)

Primary Examples of Non-Donation Financial Support

(Listed in random order)

- Ishibashi Foundation Donations and grants for the Fellowship for Research on Japanese Art Program, donations and grants for the Japan Pavilion at La Biennale di Venezia
- Shoyu Club Provision of Japanese-language educational materials and equipment to Hue University College of Foreign Languages, The University of Danang - University of Foreign Language Studies, Ha Long University and Lac Hong University
- Inoue Yasushi memorial cultural foundation Co-sponsorship for the 5th Inoue Yasushi Awards

Financial Statements

Financial Report for FY2021 (April 1, 2021 - March 31, 2022)

(Unit: JPY)

Item	Arts and Cultural Exchange programs				Japanese-Language Education programs				Japanese Studies and Intellectual Exchange programs			
	Budget	Result	Difference	Notes	Budget	Result	Difference	Notes	Budget	Result	Difference	Notes
▼Revenues												
Government subsidies for operational expenses	1,786,687,000	1,786,687,000	0		4,132,526,000	4,132,526,000	0		1,202,963,000	1,202,963,000	0	
Investment revenue	112,500,000	104,826,971	(7,673,029)		0	1,672,068	1,672,068		564,702,000	562,484,953	(2,217,047)	
Donation revenue	42,690,000	969,651	(41,720,349)		2,487,000	1,265,437	(1,221,563)		24,007,000	47,275	(23,959,725)	
Income from commissioned projects	0	0	0		2,507,000	1,815,570	(691,430)		0	0	0	
Income from reversal of Asia Center programs fund	0	0	0		0	0	0		0	0	0	
Other revenue	84,946,000	50,343,579	(34,602,421)		1,265,367,363	1,053,014,673	(212,352,690)	*1	39,656,000	143,204,863	103,548,863	
Income from reversal of reserve carried over from previous mid-term target period	119,472,438	79,326,838	(40,145,600)		0	0	0		0	0	0	
Total	2,146,295,438	2,022,154,039	(124,141,399)		5,402,887,363	5,190,293,748	(212,593,615)		1,831,328,000	1,908,700,091	77,372,091	
▼Expenditures												
Operating expenses	2,703,677,988	5,288,079,569	(2,584,401,581)	*2	5,503,886,000	7,309,770,381	(1,805,884,381)	*2	2,238,403,743	1,706,911,964	531,491,779	*3
General and administrative expenses	0	0	0		0	0	0		0	0	0	
Salaries and wages	0	0	0		0	0	0		0	0	0	
Supplies	0	0	0		0	0	0		0	0	0	
Reserve funds	0	0	0		0	0	0		0	0	0	
Total	2,703,677,988	5,288,079,569	(2,584,401,581)		5,503,886,000	7,309,770,381	(1,805,884,381)		2,238,403,743	1,706,911,964	531,491,779	

Item	Survey, research and information service programs				Asia Center programs				Overseas programs			
	Budget	Result	Difference	Notes	Budget	Result	Difference	Notes	Budget	Result	Difference	Notes
▼Revenues												
Government subsidies for operational expenses	604,082,000	604,082,000	0		0	0	0		3,752,093,000	3,752,093,000	0	
Investment revenue	0	1,175,460	1,175,460		0	0	0		0	38,933,713	38,933,713	
Donation revenue	900,000	713,849	(186,151)		0	0	0		0	3,415,054	3,415,054	
Income from commissioned projects	0	0	0		0	0	0		0	0	0	
Income from reversal of Asia Center programs fund	0	0	0		0	0	0	*4	0	0	0	
Other revenue	604,000	0	(604,000)		0	0	0		69,811,000	58,565,967	(11,245,033)	
Income from reversal of reserve carried over from previous mid-term target period	0	0	0		0	0	0		0	0	0	
Total	605,586,000	605,971,309	385,309		0	0	0		3,821,904,000	3,853,007,734	31,103,734	
▼Expenditures												
Operating expenses	604,082,000	497,088,014	106,993,986	*3	0	0	0	*4	3,985,991,000	4,013,765,960	(27,774,960)	*5
General and administrative expenses	0	0	0		0	0	0		0	0	0	
Salaries and wages	0	0	0		0	0	0		0	0	0	
Supplies	0	0	0		0	0	0		0	0	0	
Reserve funds	0	0	0		0	0	0		0	0	0	
Total	604,082,000	497,088,014	106,993,986		0	0	0		3,985,991,000	4,013,765,960	(27,774,960)	

Item	Cooperation in cultural exchange facilities programs				Common expenses				Total			
	Budget	Result	Difference	Notes	Budget	Result	Difference	Notes	Budget	Result	Difference	Notes
▼Revenues												
Government subsidies for operational expenses	0	0	0		1,154,446,000	1,154,446,000	0		12,632,797,000	12,632,797,000	0	
Investment revenue	0	259,128	259,128		8,016,000	5,154,324	(2,861,676)		685,218,000	714,506,617	29,288,617	
Donation revenue	338,519,000	153,944,583	(184,574,417)	*6	0	157,367	157,367		408,603,000	160,513,216	(248,089,784)	
Income from commissioned projects	0	0	0		0	0	0		2,507,000	1,815,570	(691,430)	
Income from reversal of Asia Center programs fund	0	0	0		0	0	0		0	0	0	
Other revenue	0	0	0		3,365,000	4,259,004	894,004		1,463,749,363	1,309,388,086	(154,361,277)	
Income from reversal of reserve carried over from previous mid-term target period	0	0	0		0	0	0		119,472,438	79,326,838	(40,145,600)	
Total	338,519,000	154,203,711	(184,315,289)		1,165,827,000	1,164,016,695	(1,810,305)		15,312,346,801	14,898,347,327	(413,999,474)	
▼Expenditures												
Operating expenses	348,167,000	172,586,921	175,580,079	*6	0	0	0		15,384,207,731	18,988,202,809	(3,603,995,078)	
General and administrative expenses	0	0	0		2,085,591,000	2,380,497,399	(294,906,399)		2,085,591,000	2,380,497,399	(294,906,399)	
Salaries and wages	0	0	0		693,515,000	747,524,839	(54,009,839)		693,515,000	747,524,839	(54,009,839)	
Supplies	0	0	0		1,204,301,000	1,632,972,560	(428,671,560)	*7	1,204,301,000	1,632,972,560	(428,671,560)	
Reserve funds	0	0	0		187,775,000	0	187,775,000		187,775,000	0	187,775,000	
Total	348,167,000	172,586,921	175,580,079		2,085,591,000	2,380,497,399	(294,906,399)		17,469,798,731	21,368,700,208	(3,898,901,477)	

*1. Decrease in income due to partial cancellation of the Japanese-Language Proficiency Test, and other factors

*2. Due to the expenditure of carrying forward the budget from FY2019 which is outside the budget for income, and other factors

*3. Decrease in expenditures due to cancellation and downsizing of some projects, and other factors

*4. Due to the decision not to dispatch NIHONGO Partners in FY2021 as a result of the extension of the subsidy period and the effects of the COVID-19 pandemic

*5. Increase in expenditures due to expansion of some projects, and other factors

*6. Decrease in designated donations received and compensated expenditures, and other factors

*7. Increase in expenditures for system common infrastructure development expenses, and other factors

Balance Sheet (as of March 31, 2022)

(Unit: JPY)

Assets		
I Current assets		
Cash and deposits		10,399,493,338
Marketable securities		5,999,945,420
Advance payments		40,163,940
Prepaid expenses		150,553,049
Accrued income		136,523,985
Accounts receivable		353,841,998
Contra accounts for allowance for bonuses ^(Note)		248,828,954
Other current assets		251,434,435
Total current assets		17,580,785,119
II Fixed assets		
1. Tangible fixed assets		
Buildings	13,893,024,407	
Accumulated depreciation	(7,149,471,734)	
Accumulated impairment losses	(298,665)	6,743,254,008
Structures	312,740,798	
Accumulated depreciation	(306,742,155)	5,998,643
Machinery and equipment	57,719,952	
Accumulated depreciation	(33,550,828)	24,169,124
Vehicles and transport equipment	115,677,812	
Accumulated depreciation	(85,262,942)	30,414,870
Tools, equipment and fixtures	1,958,239,624	
Accumulated depreciation	(1,196,119,589)	762,120,035
Art objects	557,835,633	
Accumulated depreciation	(41,439,887)	516,395,746
Land	63,515,000	
Accumulated impairment losses	(981,549)	62,533,451
Construction in progress		70,270,238
Total tangible fixed assets		8,215,156,115
2. Intangible fixed assets		
Software		358,948,403
Telephone subscription rights		428,000
Software in progress		47,957,112
Total intangible fixed assets		407,333,515
3. Investments and other assets		
Investment securities		55,052,018,597
Long-term time deposits		1,700,000,000
Deposits and bonds		399,922,116
Contra accounts for allowance for retirement benefits ^(Note)		2,440,748,568
Total investments and other assets		59,592,689,281
Total fixed assets		68,215,178,911
Total assets		85,795,964,030
Liabilities		
I Current liabilities		
Deposits subsidies and others ^(Note)		1,085,803,000
Donations received ^(Note)		48,903,204
Amount in arrears		3,428,443,741
Advances received		34,214,267
Deposits payable		8,085,239
Deferred revenue		9,579,697
Lease liabilities		5,180,163
Allowance		
Allowance for bonuses	292,125,423	292,125,423
Total current liabilities		4,912,334,734
II Fixed liabilities		
Contra accounts for assets ^(Note)		
Contra accounts for assets funded by operational grants	1,815,116,852	
Contra accounts for assets funded by donations	1,055,823	
Contra accounts for assets for construction in progress funded by operational grants	70,270,238	
Contra accounts for assets for software in progress funded by operational grants	47,957,112	1,934,400,025
Long-term deposits subsidies and others ^(Note)		715,965,129
Long-term lease liabilities		11,918,264
Allowance		
Allowance for retirement benefits	2,440,748,568	2,440,748,568
Asset retirement obligations		93,918,300
Total fixed liabilities		5,196,950,286
Total liabilities		10,109,285,020
Net assets		
I Capital stock		
Government investment		77,729,095,177
Total capital stock		77,729,095,177
II Capital surplus		
Capital surplus		539,110,363
Accumulated other administrative costs ^(Note)		(7,816,681,088)
Accumulated depreciation (loss)		(6,876,672,785)
Accumulated impairment losses (loss)		(1,406,214)
Accumulated interest expenses (loss)		(6,690,787)
Accumulated gains (losses) from sale and disposal (loss)		(931,911,302)
Endowments from private sector ^(Note)		909,040,787
Total capital surplus		(6,368,529,938)
III Retained earnings		
Reserve		1,676,964,843
Reserve carried over from previous mid-term target period ^(Note)		39,905,087
Unappropriated profit for the term		2,549,543,520
(Of which: Gross profit for the term)		2,549,543,520)
Total retained earnings		4,266,413,450
IV Valuation and translation adjustments		
Deferred gains or losses on hedges		59,700,321
Total valuation and translation adjustments		59,700,321
Total net assets		75,686,679,010
Total liabilities and net assets		85,795,964,030

(Note) These are the accounts associated with the accounting procedures specific to Incorporated Administrative Agency.

Profit and Loss Statement (April 1, 2021 - March 31, 2022)

(Unit: JPY)

Ordinary expenses		
Arts and Cultural Exchange programs	5,259,733,284	
Japanese-Language Education programs	7,090,192,461	
Japanese Studies and Intellectual Exchange programs	1,705,796,197	
Survey, research and information service programs	519,888,602	
Overseas programs	3,927,940,096	
Cooperation in cultural exchange facilities programs	172,586,921	
General and administrative expenses	1,970,996,556	
Financial expenses	366,213	
Total ordinary expenses		20,647,500,330
Ordinary income		
Income from operational grants ^(Note)	17,960,212,998	
Income from investments	722,602,992	
Income from commissioned projects	2,186,646	
Income from donations ^(Note)		
Income from donations	16,020,513	
Income from designated donations	162,950,782	178,971,295
Reversal of contra accounts ^(Note)		
Reversal of contra accounts for assets funded by operational grants	343,285,008	
Reversal of contra accounts for assets funded by donations	550,522	343,835,530
Income related to contra accounts for allowance for bonuses ^(Note)		248,828,954
Income related to contra accounts for allowance for retirement benefits ^(Note)		228,027,313
Financial income		
Interest received	98,754	98,754
Sundry income		
Income from the Japanese-Language Proficiency Test	675,826,411	
Foreign exchange gains	2,012,568,410	
Other sundry income	744,754,320	3,433,149,141
Total ordinary income		23,117,913,623
Ordinary profit		2,470,413,293
Extraordinary losses		
Loss on retirement of fixed assets	1,544,249	1,544,249
Extraordinary profits		
Reversal of contra accounts for assets funded by operational grants ^(Note)	1,347,638	1,347,638
Net profit for the term		2,470,216,682
Reversal of reserve carried over from previous mid-term target period ^(Note)		79,326,838
Gross profit for the term		2,549,543,520

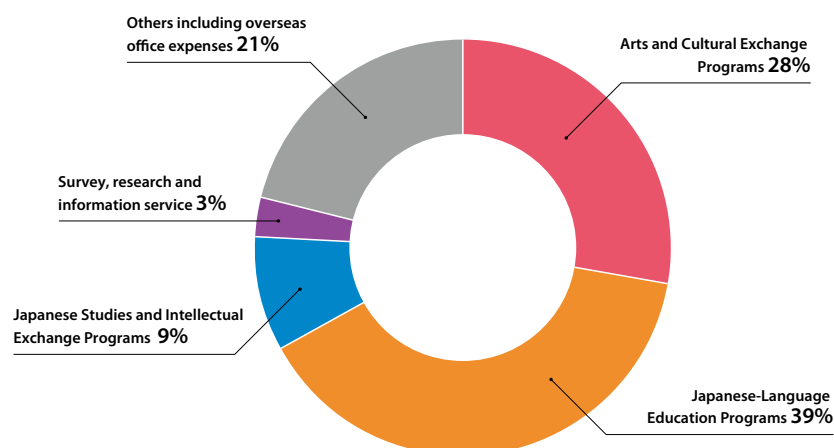
(Note) These are the accounts associated with the accounting procedures specific to Incorporated Administrative Agency.

Statement of Profit Disposition (June 29, 2022)

(Unit: JPY)

I Unappropriated profit at the end of the term		2,549,543,520
Gross profit for the term		2,549,543,520
II Reserve transfer amount		39,905,087
Reserve carried over from previous mid-term target period		39,905,087
III Appropriation of retained earnings		
Reserve	2,589,448,607	2,589,448,607

FY2021 expenditure composition ratio by project field



The Japan Foundation's Global Network

Overseas Offices

Italy: The Japan Cultural Institute in Rome

Address: Via Antonio Gramsci 74, 00197 Roma, Italy
TEL: 39-06-322-4754 FAX: 39-06-322-2165
URL: <https://www.jfroma.it/> (Italian/Japanese)

Germany: The Japan Cultural Institute in Cologne

Address: Universitätsstraße 98, 50674 Köln, Bundesrepublik Deutschland (Germany)
TEL: 49-221-9405580 FAX: 49-221-9405589
URL: <https://www.jki.de/> (German/Japanese)

France: The Japan Cultural Institute in Paris

Address: 101 bis, quai Jacques Chirac, 75740 Paris Cedex 15, France
TEL: 33-1-44-37-95-00 FAX: 33-1-44-37-95-15
URL: <https://www.mcjp.fr/> (French/Japanese)

South Korea: The Japan Foundation, Seoul

Address: Office Bldg. 2F&4F, Twin City Namsan, 366 Hangang-daero, Yongsan-gu, Seoul 04323 Korea
TEL: 82-2-397-2820 FAX: 82-2-397-2830
URL: <https://www.jpf.or.kr/> (Korean/Japanese)

China: The Japan Foundation, Beijing

Address: #301, 3F SK Tower, No.6 Jia Jianguomenwai Avenue, Chaoyang District, Beijing, 100022 China
TEL: 86-10-8567-9511 FAX: 86-10-8567-9075
URL: <https://www.jpfbj.cn/> (Chinese/Japanese)

Indonesia: The Japan Foundation, Jakarta

Address: Summitmas II Lt. 1,2, Jl. Jenderal Sudirman, Kav. 61-62 Jakarta 12190, Indonesia
TEL: 62-21-520-1266 FAX: 62-21-525-1750
URL: <https://ja.jpf.go.jp/> (Indonesian/English/Japanese)

Thailand: The Japan Foundation, Bangkok

The Japan Foundation, Bangkok
Address: 10th Fl. Serm-Mit Tower, 159 Asoke-Montri Road, Bangkok 10110 Thailand
TEL: 66-2-260-8560
URL: <https://ba.jpf.go.jp/th/home-th/> (Thai/English/Japanese)

Philippines: The Japan Foundation, Manila

The Japan Foundation, Manila
Address: 23F, Pacific Star Building, Sen. Gil Puyat Avenue, corner Makati Avenue, Makati City, 1226, Philippines
TEL: 63-2-8811-6155
URL: <https://www.jfmo.org.ph/> (English)

Malaysia: The Japan Foundation, Kuala Lumpur

Address: 18th Floor, Northpoint Block B, Mid-Valley City, No.1, Medan Syed Putra, 59200, Kuala Lumpur, Malaysia
TEL: 60-3-2284-6228 FAX: 60-3-2287-5859
URL: <https://www.jfkl.org.my/> (English)

Myanmar: The Japan Foundation, Yangon

Address: No.70 Nat Mauk Lane (1), Bahan Township, Yangon Myanmar
TEL: 95-1-430-920/1 FAX: 95-1-430-922
URL: <https://yg.jpf.go.jp/> (Burmese/English)

India: The Japan Foundation, New Delhi

Address: 5-A, Ring Road Lajpat Nagar-IV, New Delhi, 110024, India
TEL: 91-11-4606-5769/4558-8698
URL: <https://nd.jpf.go.jp/> (English)

Australia: The Japan Foundation, Sydney

Address: Level 4, Central Park, 28 Broadway, Chippendale NSW 2008 Australia
TEL: 61-2-8239-0055
URL: <https://www.jpf.org.au/> (English)

Canada: The Japan Foundation, Toronto

Address: The Japan Foundation, Toronto 2 Bloor Street East, Suite 300, PO Box 130, Toronto, Ontario, Canada M4W 1A8
TEL: 1-416-966-1600 FAX: 1-416-966-9773
URL: <https://www.jftor.org/> (English)

U.S.: The Japan Foundation, New York

Address: 1700 Broadway, 15th Floor, New York, NY 10019, U.S.A.
TEL: 1-212-489-0299 FAX: 1-212-489-0409
URL: <https://ny.jpf.go.jp/> (English)

U.S.: The Japan Foundation, Los Angeles

Address: 5700 Wilshire Boulevard, Suite 100 Los Angeles, CA 90036, U.S.A.
TEL: 1-323-761-7510
URL: <https://www.jfalc.org/> (English)

Mexico: The Japan Foundation, Mexico

The Japan Foundation, Mexico
Address: Av. Ejército Nacional #418 Int. 207, Col. Polanco V sección, C.P. 11560 CDMX México
TEL: 52-55-5254-8506
URL: <https://mc.jpf.go.jp/> (Spanish)

Brazil: The Japan Foundation, São Paulo

Address: Av. Paulista, 52 – 3º andar Bela Vista, CEP 01310-900, São Paulo – SP
TEL: 55-11-3141-0843/55-11-3141-0110
URL: <https://fjso.org.br/> (Portuguese)

UK: The Japan Foundation, London

Address: 101-111 Kensington High Street, London, W8 5SA, U. K.
TEL: 44-20-7492-6570
URL: <https://www.jpf.org.uk/> (English)

Spain: The Japan Foundation, Madrid

Address: 2a planta del Palacio Cañete Calle Mayor, 69 28013 Madrid
TEL: 34-91-310-1538 FAX: 34-91-308-7314
URL: <https://www.fundacionjapon.es/> (Spanish/Japanese)

Hungary: The Japan Foundation, Budapest

Address: Oktogon Haz 2F, 1062 Budapest, Aradi utca 8-10, Hungary
TEL: 36-1-214-0775 FAX: 36-1-214-0778
URL: <https://www.japanalapitvany.hu/> (Hungarian/English/Japanese)

Russia: The Japanese Culture Department "The Japan Foundation" of the All-Russia State Library for Foreign Literature

Address: 4th Floor, Nikoloyamskaya Street, 1, Moscow, Russian Federation, 109240
TEL: 7-495-626-5583
URL: <https://www.jpfmw.ru/> (Russian/Japanese)

Egypt: The Japan Foundation, Cairo

Address: 5th Floor, 106 Qasr Al-Aini Street, Garden City, Cairo, Egypt
TEL: 20-2-2794-9431/20-2-2794-9719

Vietnam: The Japan Foundation Center for Cultural Exchange in Vietnam

Address: No. 27 Quang Trung Street, Hoan Kiem District, Hanoi, Vietnam
TEL: 84-24-3944-7419 FAX: 84-24-3944-7418
URL: <https://jpf.org.vn/> (Vietnamese/Japanese)

Cambodia: Phnom Penh Liaison Office

Address: #22, Ground Floor of Hotel Cambodiana, 313 Sisowath Quay, Phnom Penh, Kingdom of Cambodia
TEL: 855-23-21-4581
URL: <https://pp.jpf.go.jp/> (Khmer/English)

Laos: Vientiane Liaison Office

Address: Allianz Building 3rd Floor, 33 Lane Xang Avenue, Ban Hatsady, Chantabouly District, Vientiane, Lao PDR
TEL: 856-21-240-280
URL: <https://jfavt.la/> (Laos/English)

Headquarters, Affiliated Organizations and Branch in Japan

The Japan Foundation Headquarters

1-6-4 Yotsuya, Shinjuku-ku, Tokyo 160-0004
TEL: 03-5369-6075 FAX: 03-5369-6044
URL: <https://www.jpf.go.jp>

Library

TEL: 03-5369-6086 FAX: 03-5369-6044
URL: <https://www.jpf.go.jp/j/about/jfic/lib/index.html>

The Japan Foundation Japanese-Language Institute, Urawa

5-6-36 Kita-Urawa, Urawa-ku Saitama City, Saitama, 330-0074, Japan
TEL: 048-834-1180(Main) FAX: 048-834-1170
URL: <https://www.jpf.go.jp/j/urawa/>

Library

TEL: 048-834-1185 FAX: 048-830-1588
URL: https://www.jpf.go.jp/j/urawa/j_library/j_library.html

The Japan Foundation Japanese-Language Institute, Kansai

3-14 Rinku Port Kita, Tajiri-cho, Sennan-gun, Osaka, 598-0093, Japan
TEL: 072-490-2600(Main) FAX: 072-490-2800
URL: <https://www.jpf.go.jp/j/kansai>

Library

TEL: 072-490-2605 FAX: 072-490-2805
URL: <https://www.jpf.go.jp/j/kansai>

The Japan Foundation Kyoto Office

3rd Floor, Kyoto International Community House, 2-1 Torii-cho, Awataguchi, Sakyo-ku Kyoto City, Kyoto, 606-8436 Japan
TEL: 075-762-1136 FAX: 075-762-1137
URL: <https://www.jpf.go.jp/j/world/kyoto.html>

American Advisory Committee for Japanese Studies

- **Michael Bourdaghs** University of Chicago (Literature)
- **Lee Branstetter** Carnegie Mellon University (Economics)
- **Julie Nelson Davis** University of Pennsylvania (History of Art)
- **Alisa Freedman** University of Oregon (Modern Japanese Literature)
- **Andrew Gordon** Harvard University (History)
- **Eiko Ikegami** The New School (Sociology)
- **Patricia Maclachlan** The University of Texas at Austin (Political Science)
- **Laura Miller** University of Missouri-St. Louis (Anthropology)
- **Mari Noda** The Ohio State University (Linguistics and Language Pedagogy)
- **Robert J. Pekkanen** University of Washington (Political Science and Sociology)
- **Morgan Pitelka** University of North Carolina at Chapel Hill (History)
- **Doug Slaymaker** University of Kentucky (Japanese Literature)
- **Kären Wigen** Stanford University (Geography and History)
- **Duncan Ryuken Williams** University of Southern California (Religious Studies)
- **Christine Yano** University of Hawaii at Manoa (Anthropology and Cultural Studies)

Advisory Committee of The Japan Cultural Institute in Paris

From France

- **Louis Schweitzer**
Special Representative of the Minister of Foreign Affairs of Europe for France-Japan Partnership
- **Hortense Archambault** Director, Maison de la Culture de Seine-Saint-Denis
- **Jacques Aschenbroich** CEO, Valeo
- **Estelle Brachlianoff** CEO, Veolia
- **Philippe Faure** Former French Ambassador to Japan
- **Michael Lucken** Professor, INALCO University
- **Jean-Robert Pitte** Chairman, French Geographical Society
- **Christian Sautter**
Vice President, France-Japan Foundation (FFJ) of L'École des Hautes Etudes en Sciences Sociales
- **Diane de Selliers** President, Diane de Selliers Press

From Japan

- **MATSUURA Koichiro** Former Director-General of UNESCO
- **HAYAMA Reiko** Architect
- **HORIBA Atsushi** Chairman and Group CEO, Horiba, Ltd.
- **ITO Junji** Art Critic; Administrative Professor, Tokyo University of the Arts Public Collaboration Center
- **KASHIWAKURA Yasuo** Professor Emeritus, The Open University of Japan
- **NISHIGAKI Toru** Professor Emeritus, The University of Tokyo
- **OGINO Anna** Writer; Professor, Faculty of Letters, Keio University
- **OHYAGI Shigeo** Advisor, TEIJIN LIMITED
- **SAKAI Tadayasu** Director, Setagaya Art Museum
- **TSUJIHARA Noboru** Writer; Director, Kanagawa Museum of Modern Literature

The Japan Foundation Asia Center Advisory Committee

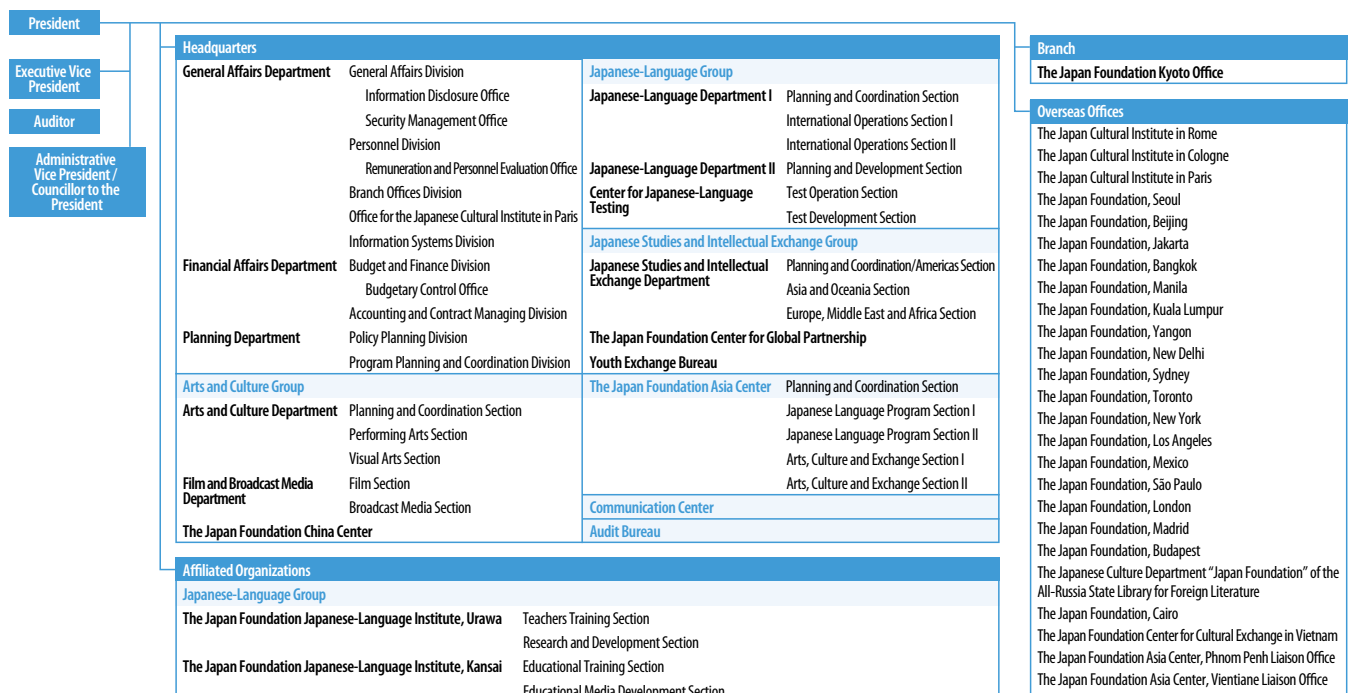
From Japan

- **CHIBANA Kurara** Model; Ambassador of Japan, World Food Programme (WFP)
- **HASEGAWA Michiko** Professor Emeritus, Saitama University
- **INOKO Toshiyuki** CEO, teamLab Inc.
- **INOUE Hiroshi** Advisor, Tokyo Broadcasting System Television, Inc.
- **ISHII Eriko**
Professor, Tokyo Women's Christian University; Chairperson, The Society for Teaching Japanese as a Foreign Language
- **KATO Masaya** (Actor)
- **KOSHINO Junko** (Designer)
- **MIYASAKO Masaaki** Professor Emeritus, Tokyo University of the Arts; Japanese-style Painter
- **SAKOMOTO Jay** President, Shochiku Co., Ltd.
- **TORII Shingo** Vice Chairman of the Board, Suntory Holdings Ltd.
- **YAMAUCHI Masayuki (Chairperson)** Professor Emeritus, The University of Tokyo

From ASEAN

- **Dato Paduka Hamdillah H A Wahab** (Brunei)
Founding Director, Brunei-Japan Friendship Association (BJFA)
- **Pou Sothirak** (Cambodia)
Executive Director, The Cambodian Institute for Cooperation and Peace; Government Advisor
- **Riri Riza** (Indonesia) Film Director
- **Phonethepvixay Saythilath** (Laos) Singer; Director, Kaona Entertainment Co., Ltd.
- **Datuk Lat** (Malaysia) Cartoonist
- **Lahpai Seng Raw** (Myanmar)
Founder and Former Director, Metta Development Foundation
- **Ambeth R. Ocampo** (Philippines)
Professor, Department of History, Ateneo de Manila University
- **Goh Ching Lee** (Singapore) Founder, Executive and Artistic Director, CultureLink Singapore
- **Kitti Prasirtsuk** (Thailand) Professor, Department of Political Science, Thammasat University
- **Nguyen Van Chinh** (Vietnam)
Associate Professor, Head, Department of Anthropology, University of Social Sciences and Humanities, Hanoi

Organization



(As of March 31, 2022 before organizational restructuring)

Websites and Social Media

Websites

The Japan Foundation official website <https://www.jpf.go.jp/>

The Japan Foundation provides a wealth of information and resources online, including information about our programs and upcoming events, how to apply to participate in various applicable programs, Japanese-language teaching materials, past survey reports and links to our overseas offices.



Online content (videos, reading materials)

The Japan Foundation offers videos of performances, exhibitions, lectures, seminars and other events that can be enjoyed online as well as such other online content as interviews with and contributions from people who are active at the frontlines of cultural exchange.

- JF digital collection https://www.jpf.go.jp/e/project/digital_collection/
- Web magazine Wochi Kochi <https://www.wochikochi.jp/english/>
- Performing Arts Network Japan <https://performingarts.jpf.go.jp>
- Japanese Film Website JFF+ <https://jff.jpf.go.jp>
- Japan-China 21st Century Friendship Program (“Heart to Heart” website) <https://xinlianxin.jpf.go.jp/>
- Online Japanese-Language Education Programs <https://www.jpf.go.jp/j/project/japanese/survey/online/>
- Japan Outreach Initiative (JOI) Program <https://www.joiprogram.jp/>

Information on Japanese-Language Education

Tests The Japan Foundation offers information about Japanese-language tests that measure and provide certification of the Japanese-language proficiency of non-native Japanese-language learners.

- Take Japanese-Language Test <https://www.jpf.go.jp/e/project/japanese/test/>

Support for Japanese-Language Teachers The Japan Foundation provides a wide range of information on Japanese-language teacher trainings, Japanese-language teaching materials as well as ideas for classes and voices of people at overseas Japanese-language educational institutions.

- Teach Japanese-Language <https://www.jpf.go.jp/e/project/japanese/teach/>

Support for Japanese-Language Learners The Japan Foundation provides teaching materials for learning Japanese, e-learning sites for online learning, videos and web-based teaching materials.

- Learn Japanese-Language <https://www.jpf.go.jp/e/project/japanese/education/>

State of Japanese-Language Education The Japan Foundation provides the report entitled “Survey Report on Japanese-Language Education Abroad” that covers the entire world and information such as on the state of Japanese-language education in each country.

- Know about Japanese-Language Education Abroad <https://www.jpf.go.jp/e/project/japanese/survey/>

NIHONGO Partners Program The program sends people to middle and high schools in Asia to serve as partners for Japanese-language teachers and their students by acting as teaching assistants and introducing Japanese culture.

- NIHONGO Partners <https://asiawa.jpf.go.jp/en/partners/>

Materials / Resources / Databases

Translation/publishing The Japan Foundation provides information on Japanese literary works translated into foreign languages and recommended books for translation and publication.

- Japanese Literature in Translation Search <https://jltrans-opac.jpf.go.jp/>
- Worth Sharing—A Selection of Japanese Books Recommended for Translation <https://www.worthsharing.jpf.go.jp/en/>
- Lifelong Favorites—Selections from the Bookshelves of Young Readers in Japan <https://www.worthsharing.jpf.go.jp/en/lifelong-favorites/>

Films The Japan Foundation disseminates information in Japanese and English on more than approximately 6,200 Japanese films.

- Japanese Film Database (JFDB) <https://jfdb.jp/en/>

Social Media



- YouTube channel <https://www.youtube.com/user/thejapanfoundation>



- The Japan Foundation Official Facebook <https://www.facebook.com/TheJapanfoundation>
- Japan-China 21st Century Friendship Program Official Facebook <https://www.facebook.com/JF.Xinlianxin/>
- NIHONGO Partners Program Official Facebook <https://www.facebook.com/jfnihongopartners/>



- The Japan Foundation Official Twitter <https://twitter.com/japanfoundation>
- NIHONGO Partners Program Official Twitter <https://twitter.com/NihongoPartners>



- Japan-China 21st Century Friendship Program Official Instagram https://www.instagram.com/jf_xinlianxin/

国際交流基金
JAPAN FOUNDATION



The Japan Foundation Annual Report 2021-2022

Published in February 2023

Written, edited and published by: The Japan Foundation Public Relations Dept.

1-6-4 Yotsuya, Shinjuku-ku, Tokyo 160-0004, Japan

Phone: 81-3-5369-6075 Fax: 81-3-5369-6044

Editing and production: Arc Communications Inc.